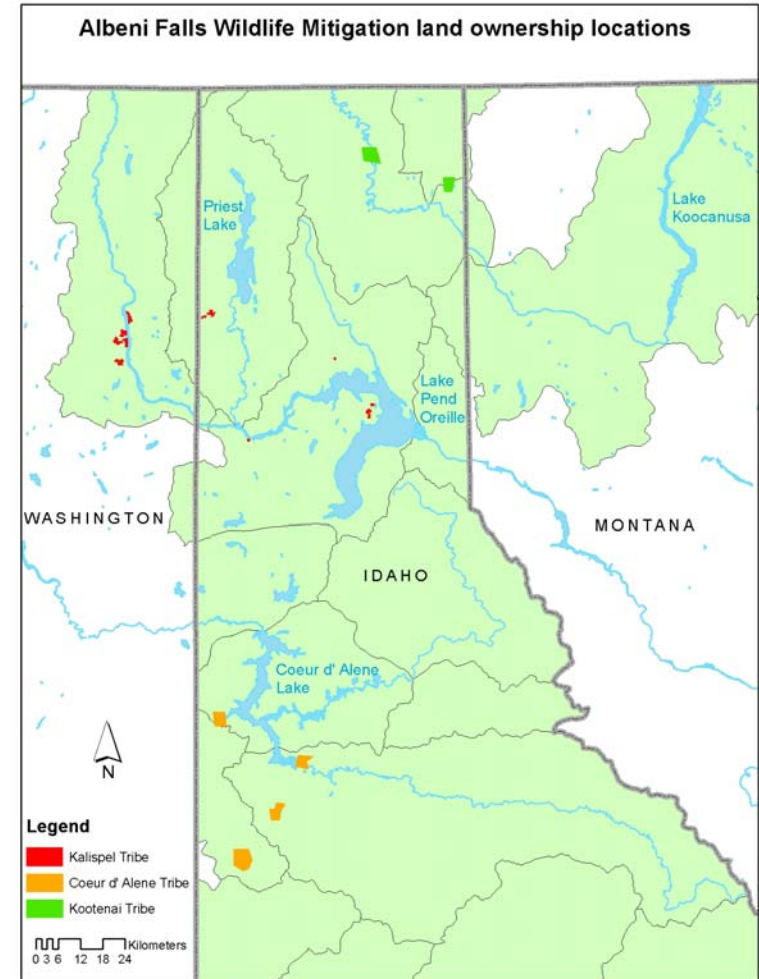


# ALBENI FALLS WILDLIFE MITIGATION PROJECT

- Albeni Falls Work Group
  - Kalispel Tribe of Indians
  - Kootenai Tribe of Idaho
  - Coeur d'Alene Tribe of Indians
  - US Army Corps of Engineers
- Can include USF&WS, NRCS, local NGOs, and others interested in mitigation efforts
- Focuses efforts in three subbasins in order to meet HU Goals



# Key Limiting Factors

## ■ Wetland Loss

- Less than 3.3 percent of wetland and deepwater habitat are protected in the project area (Jankovsky-Jones 1997).



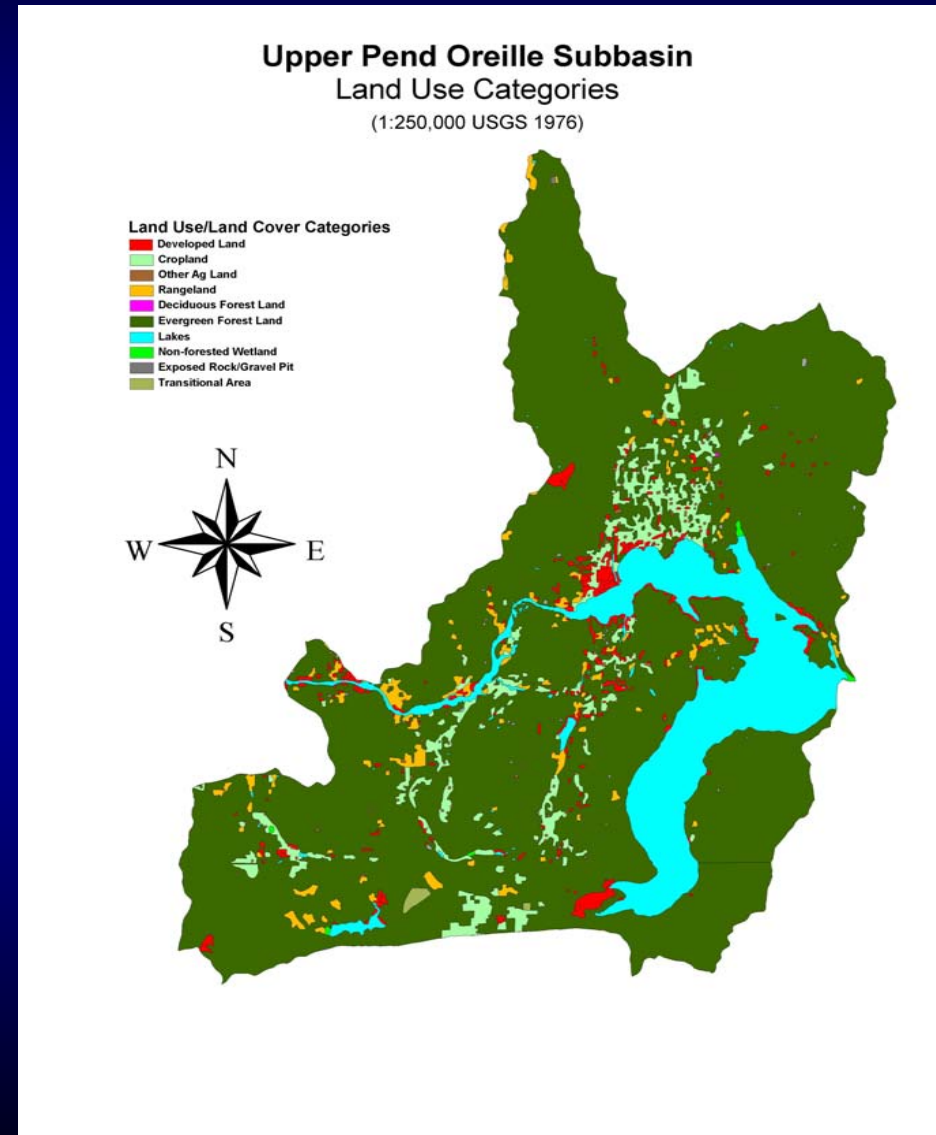
## ■ Riparian Loss

- deciduous forested wetlands have seen significant declines in aerial extent due to inundation and land clearing (Jankovsky-Jones 1997).

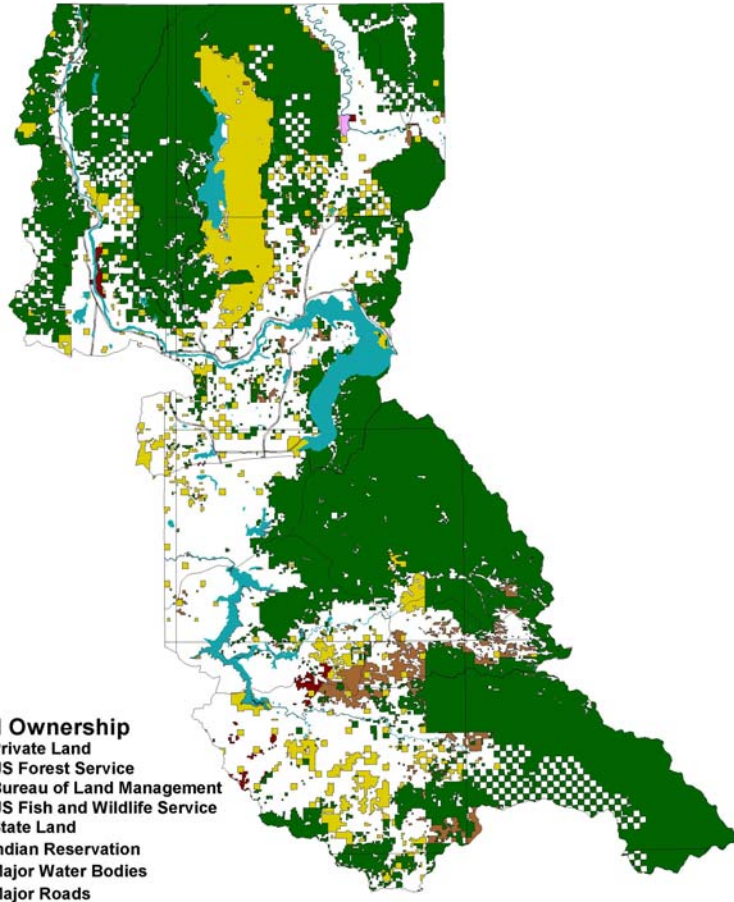


# Land Use Within the Subbasin

- Development and Habitat Conversion Occur Primarily within the Floodplain (On-site/In-kind)
  - Limited Ability to fulfill Obligations On-site
  - Necessary to Implement Habitat Protection in Adjacent Subbasins in Order to meet Goals and Objectives



# Land Ownership Within Target Subbasins



- Floodplain, Wetland and Riparian Habitat
  - In-Kind Habitat
  - Majority in Private Ownership
  - Willing Seller Projects Pursued
    - » Easement
    - » Acquisition

# Project Selection

- Identify Willing Sellers
- Develop Project Proposal
- Rank Proposals
- Implement High Priority Projects
  - Begin Federal Acquisition Process under guidance of BPA COTRs and Realty Staff
  - Includes ESA Level 1, Federal Appraisal, NEPA
- Close Protection Actions

# Project Planning

- M & E Data
  - HEP data
  - GIS Data
  - Remote Sensing
  - Other Data
- 
- Used to develop site specific management plans



# Project Implementation

## *Conservation Approach*

- Lands with management plans aimed at conserving present values
- Includes passive management strategies
- Basic Operations and Maintenance approach



# Project Implementation

## *Management Approach*

- Lands with management plans aimed at restoring and enhancing habitat potential
- Includes active management strategies
- Includes Operations and Maintenance





# Monitoring and Evaluation

## *Ongoing Efforts*

- HEP is used to determine project crediting to BPA.
- All Tribal Albeni Falls Wildlife Projects use the Upper Columbia United Tribes' Wildlife Monitoring and Evaluation Project (UWMEP) to determine project effectiveness beyond crediting.