

Willamette Wildlife Mitigation Program

A large dam structure spans across a wide river. The dam features several spillways where water is cascading down, creating white foam. The dam is constructed from concrete and has a bridge-like structure in the background. The surrounding area is lush with green trees and vegetation. The sky is clear and blue.

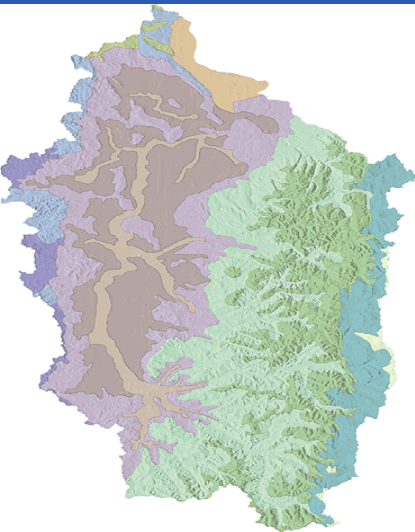
Michael Pope

Oregon Department of Fish and Wildlife

Willamette River

Historic Condition

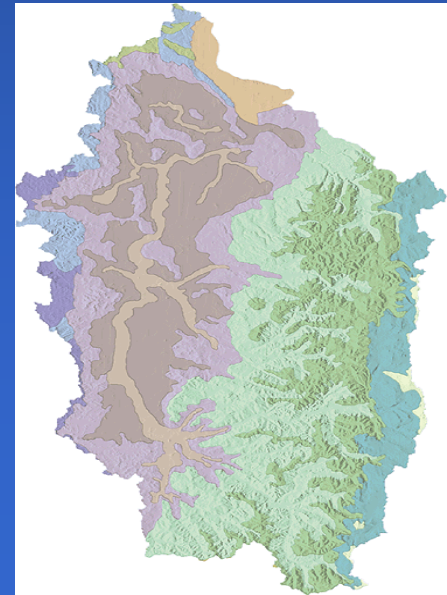
- **Complex braided channels**
- **Islands**
- **Wide, diverse flood plains**
- **Extensive bottomland forest, wet prairies, wetlands/riparian areas**



Willamette Subbasin

Changes Historic Condition

- Total area of river channels and islands decrease by 50% (1850 to 1995)
- Length decreased from 355 to 264 miles
- 30% decline in small floodplains along tributaries-70% decline of islands in tributaries
- Bottom line: loss of diversity and complexity



Willamette Subbasin Focal Habitats-Current Status

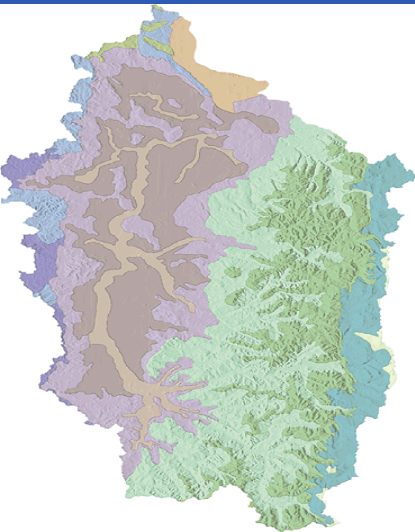
- Oak Woodlands-7%
- Upland Prairies-1%
- Wetland Prairies-2%
- Riparian Areas-30%



Willamette Subbasin

Demographics

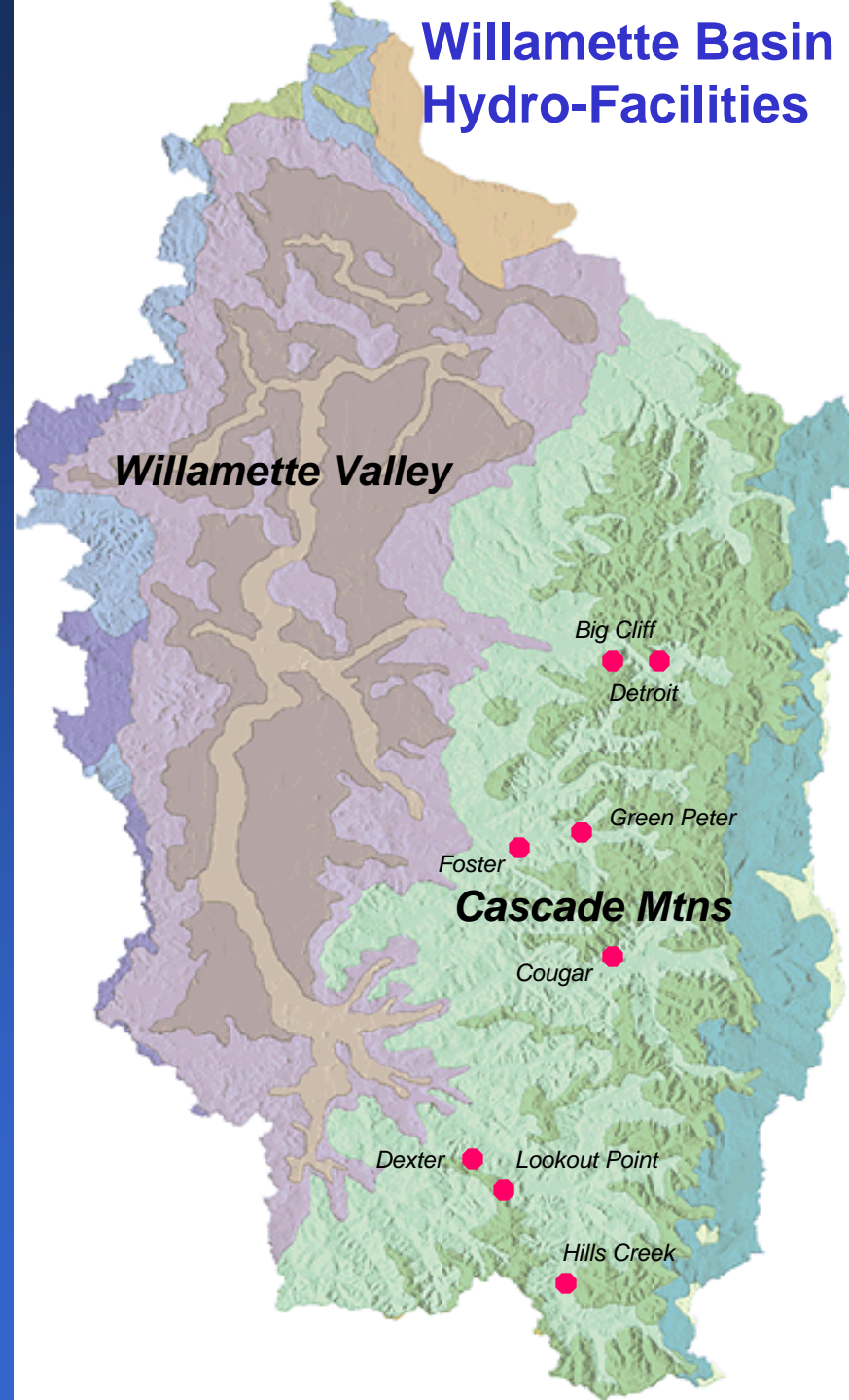
- **Fastest growing-68% of state population-4 million by 2050**
- **97% private land**
- **Land use conversion: suburban developments and habitat loss**
- **Land matrix: small parcels with high value**



Willamette Subbasin Plan Conservation Focus

Section 5.2.2.3-

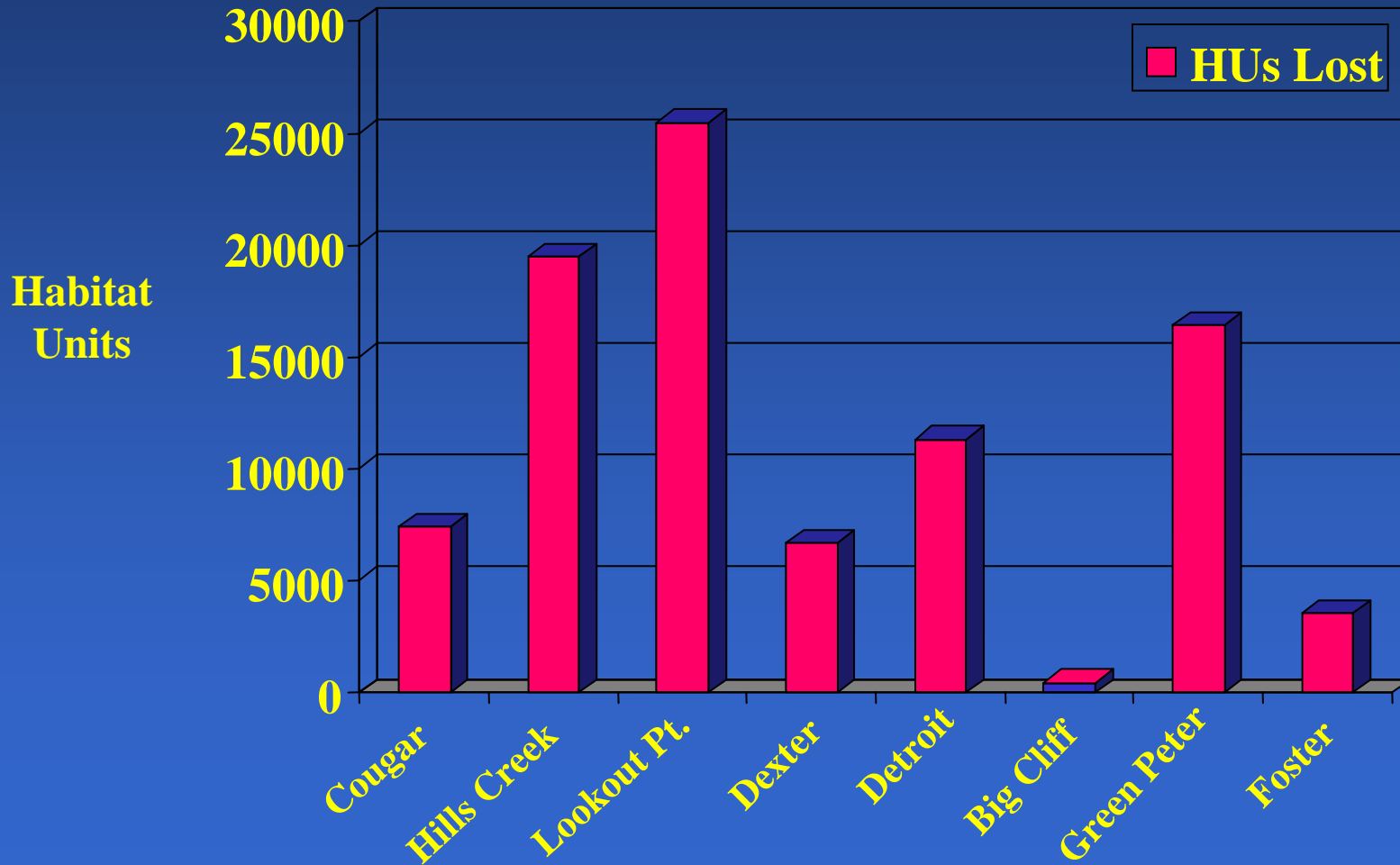
“Willamette Valley has lost 80% of its bottomland forests, 97% of its natural grasslands, and nearly 100% of its oak savanna. Restoration efforts should now focus on these valley and hillside habitats to benefit the unique and sometimes rare wildlife species that live there.”





Impact Assessment Results

Willamette River Dams-94,306 HU



Guiding Documents

- **NPCC Fish and Wildlife Program**
- **Willamette Subbasin Plan**
- **Oregon Conservation Strategy**
- **Willamette Biological Opinion**

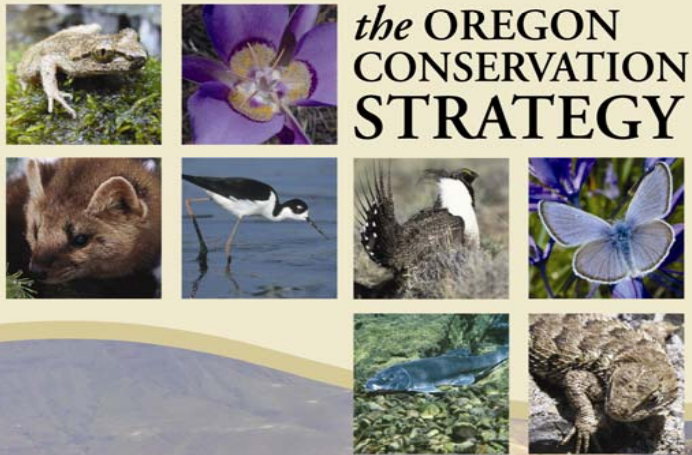


The Oregon Conservation Strategy -

healthy habitats for wildlife and people



Comprehensive Statewide Strategy



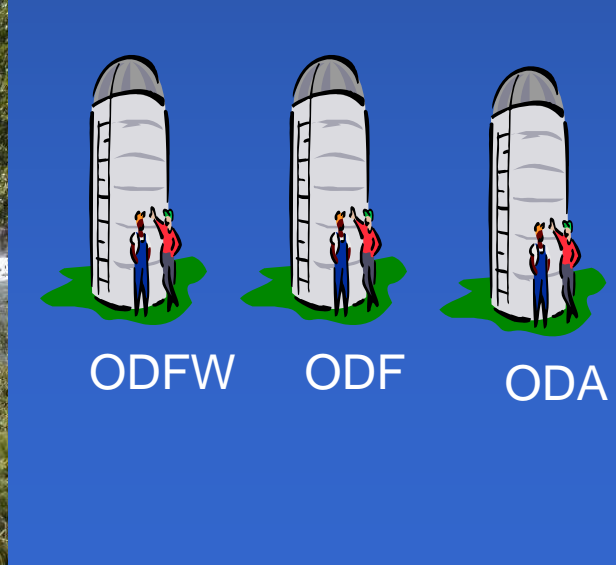
Linked to Unprecedented National Effort



**Includes Wildlife, Fish, Plants, Amphibians
and Invertebrates**



Six Key Conservation Issues



8 Ecoregions



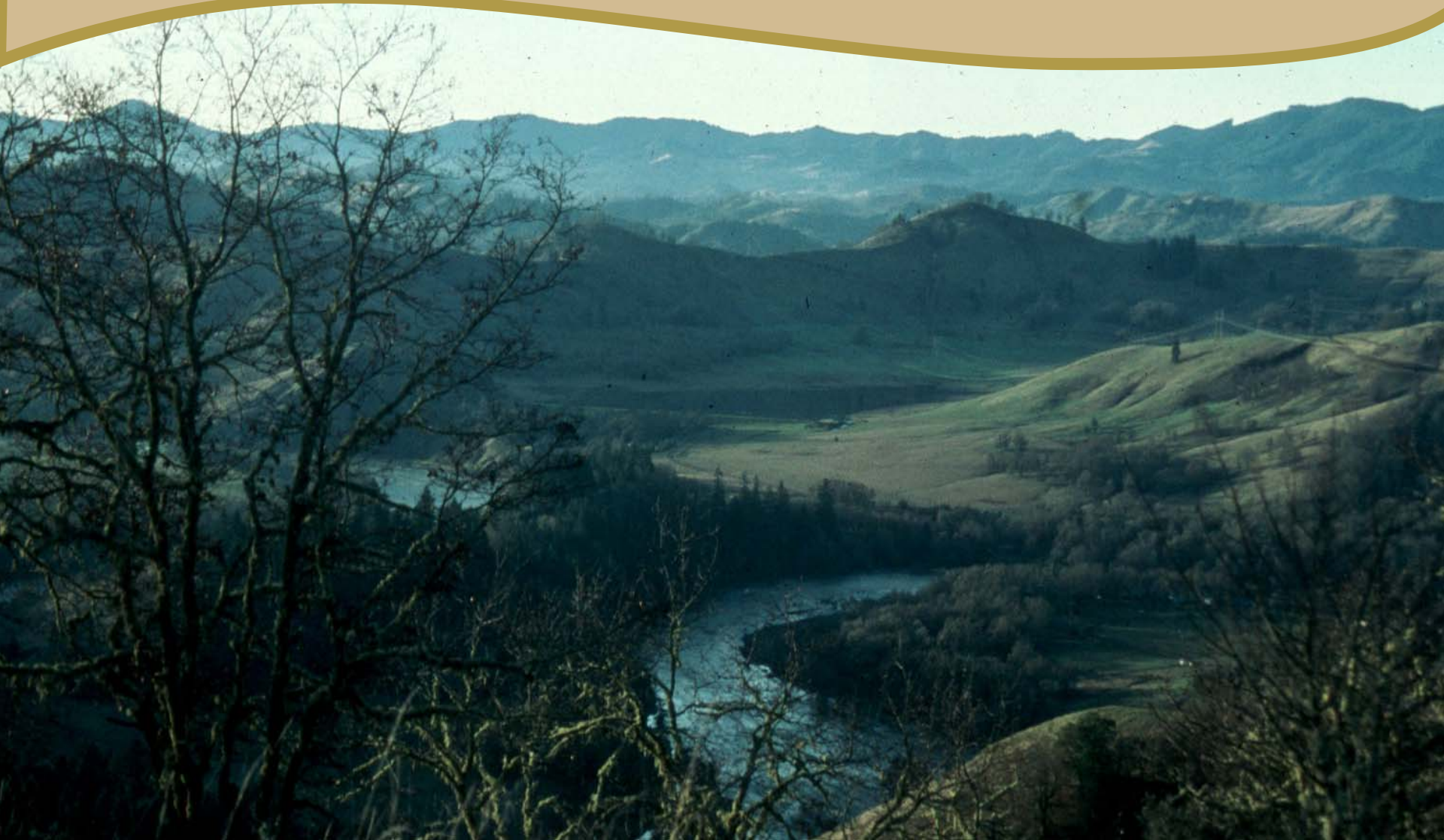
11 Strategy Habitats



286 Strategy Species






Conservation Opportunity Areas







**Lamette Valley Ecoregion
Conservation Opportunity Areas**



LEGEND

-  Conservation Opportunity Area
-  Highway
-  Rivers
-  Water body

Land Ownership

-  Federal
-  Private
-  State
-  County

This product is for informational purposes and may not have been prepared for, or be suitable for legal, engineering, or surveying purposes. Users of this information should review or consult the primary data information sources to ascertain the usability of the information.



Energy Development and Impacts on Wildlife



Allocation of Water Resources and Impacts to Aquatic Species and Floodplain Functions



Impacts of Climate Change on Oregon's Species and Habitats



Willamette Model

➤ Partnerships and Collaborations

- The Nature Conservancy
- Greenbelt Landtrust
- Trust for Public Lands
- USACOE
- USFWS
- McKenzie River Trust
- Friends of Buford Park
- City of Corvallis
- Trout Mountain Forestry
- Middle Fork Willamette Watershed Council
- Northwest Habitat Institute
- Zena Timber
- Willamette University
- Willamette Partnership
- University of Washington/Montana
- Oregon State University
- Bonneville Power Administration
- Oregon Department of Forestry
- Scientific Certification Systems



Willamette Model

- **Conservation Aggregations**
 - a) **Strategic Focus of Investments**
 - b) **Provide Habitat Complexity**
 - c) **Cost/share and Partnerships**



Willamette Model

➤ Conservation Opportunity Areas

- Confluence sites
- Areas contain ecologically valuable species/habitats
- Aggregations of protected areas



Willamette Model

➤ Flexible and Opportunistic

- Working Landscapes
- Easements/Fee Title
- Cost/Share



Willamette Subbasin Mitigation Projects



2007-2009: Over 2000 Additional Acres in the Willamette Basin are Permanently Protected



On-the-Ground Restoration on 2500 Acres



Willamette Subbasin Mitigation Projects

Mt Pisgah



Mt Pisgah/Buford Park

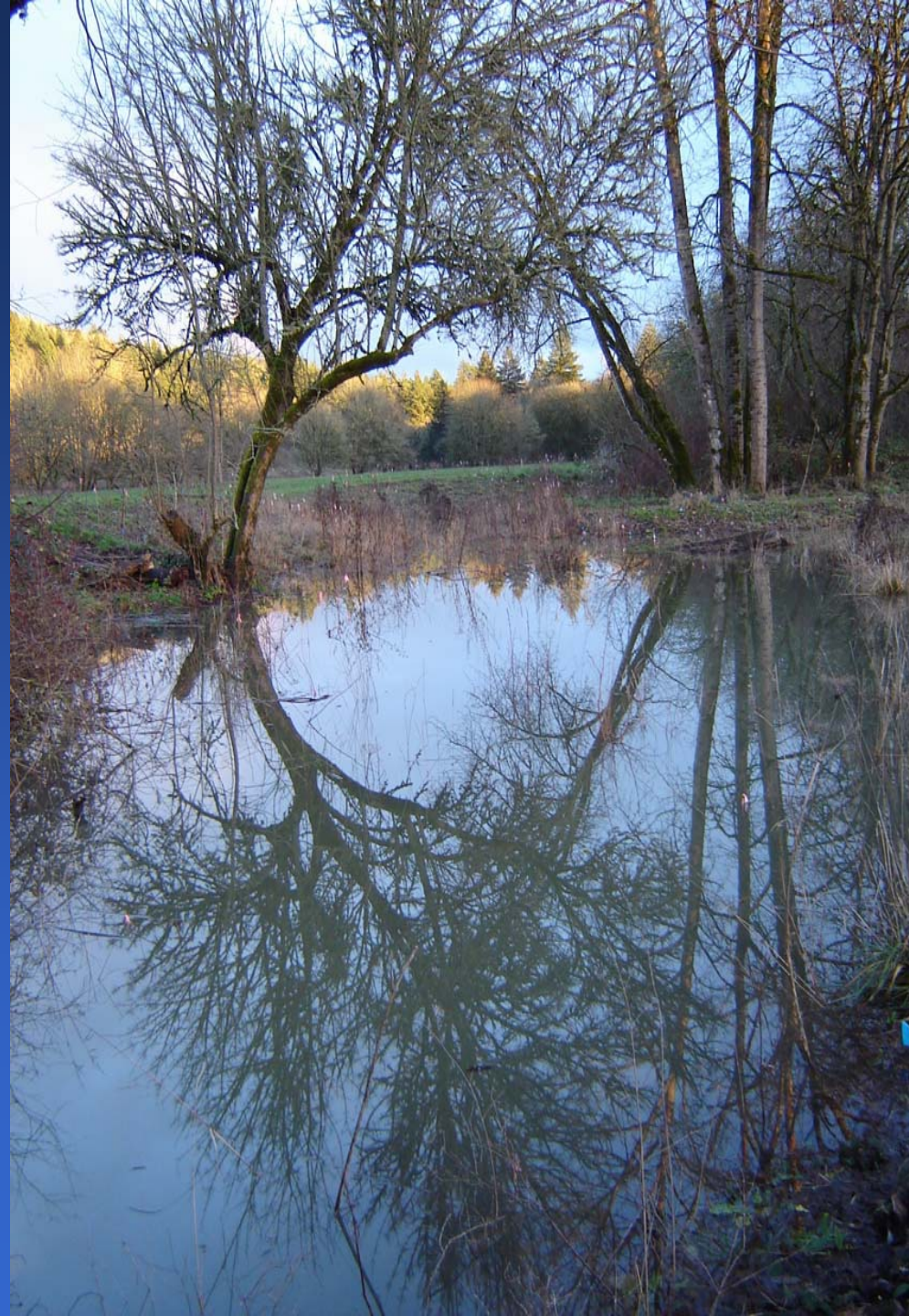
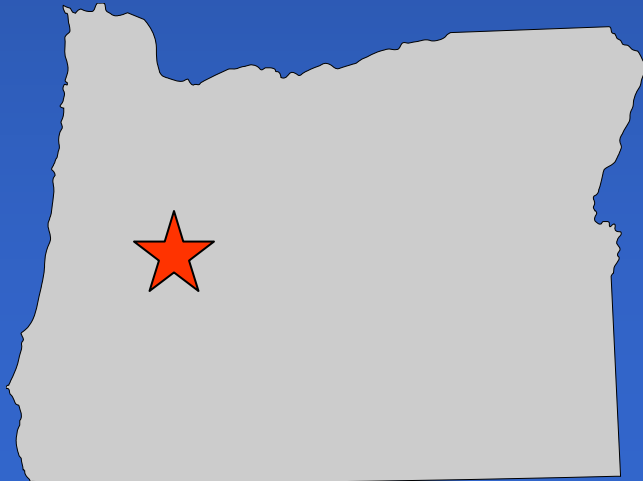
1000+ acres

Habitat Types:

Riparian/Riverine

Wet/Upland Prairie

Oak Woodland



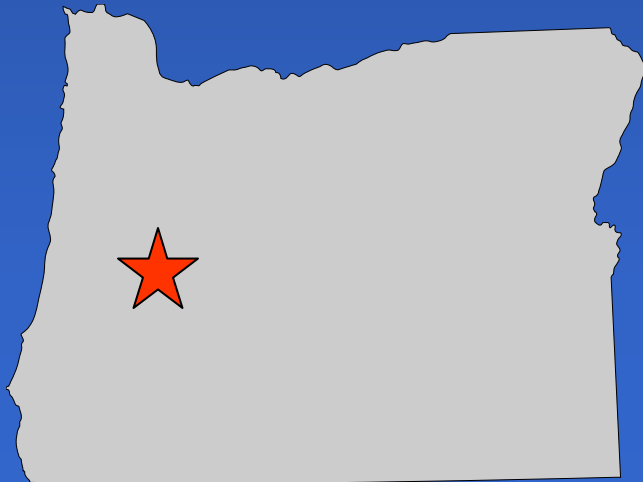


Willamette Floodplain Restoration Study

Coast and Middle Forks Willamette

Cooperative (USCOE, ODFW, BPA, TNC and Willamette Partnership) multi-year project to restore floodplain functions by allowing river to act more like a river.

- Conservation of floodplain lands
- Restoration of riparian corridors
- Protection of bio-sensitive channel banks



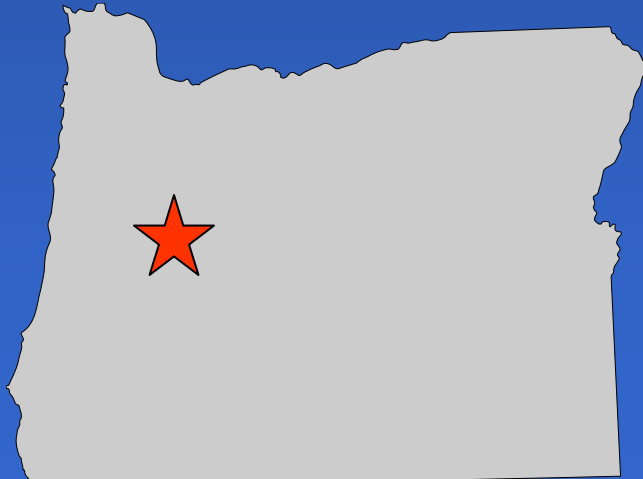
Willamette Subbasin Mitigation Projects Big Island



Big Island Willamette Subbasin

Implemented in 2001
108 acres

Habitat Types:
Riparian Forest
Riverine
Wetlands



Big Island

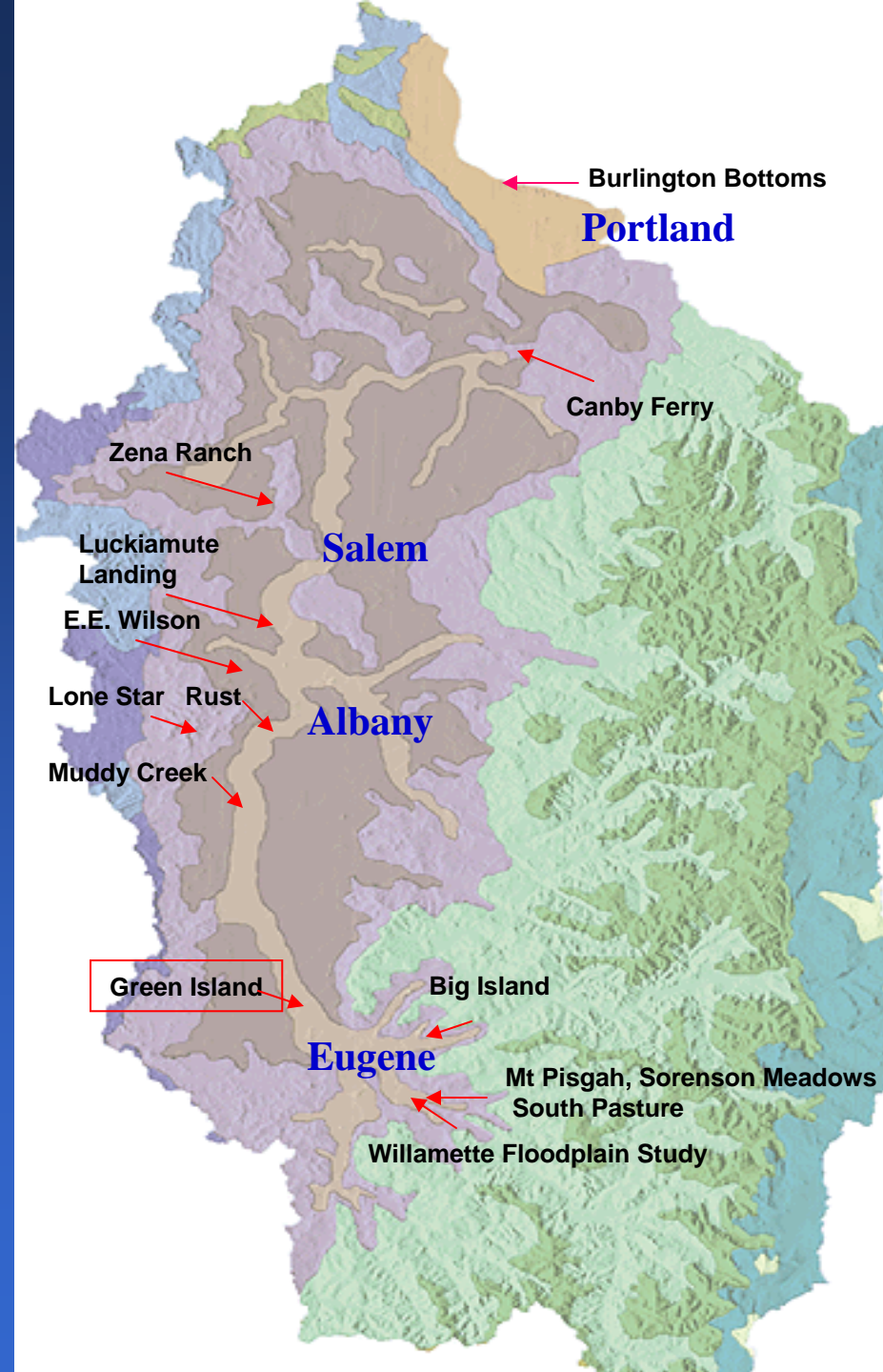


Project Activities:

- Invasive species removal
- Native planting
- Restoring hydrology
- Road decommission
- Species Management



Willamette Subbasin Mitigation Projects Green Island





Green Island Willamette Subbasin

Implemented in 2003

1100 acres

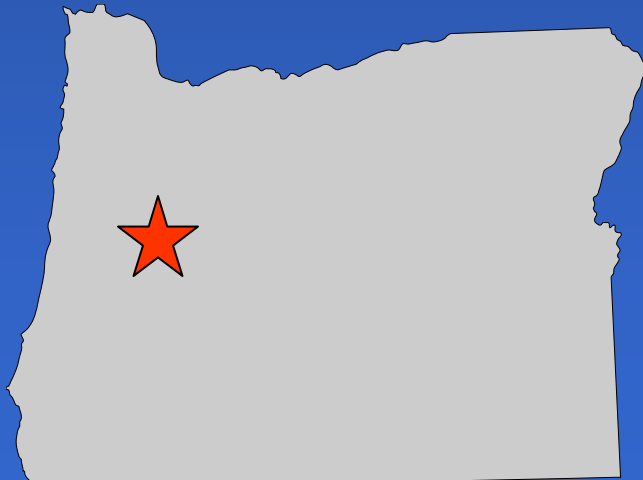
Habitat Types:

Riparian Forest

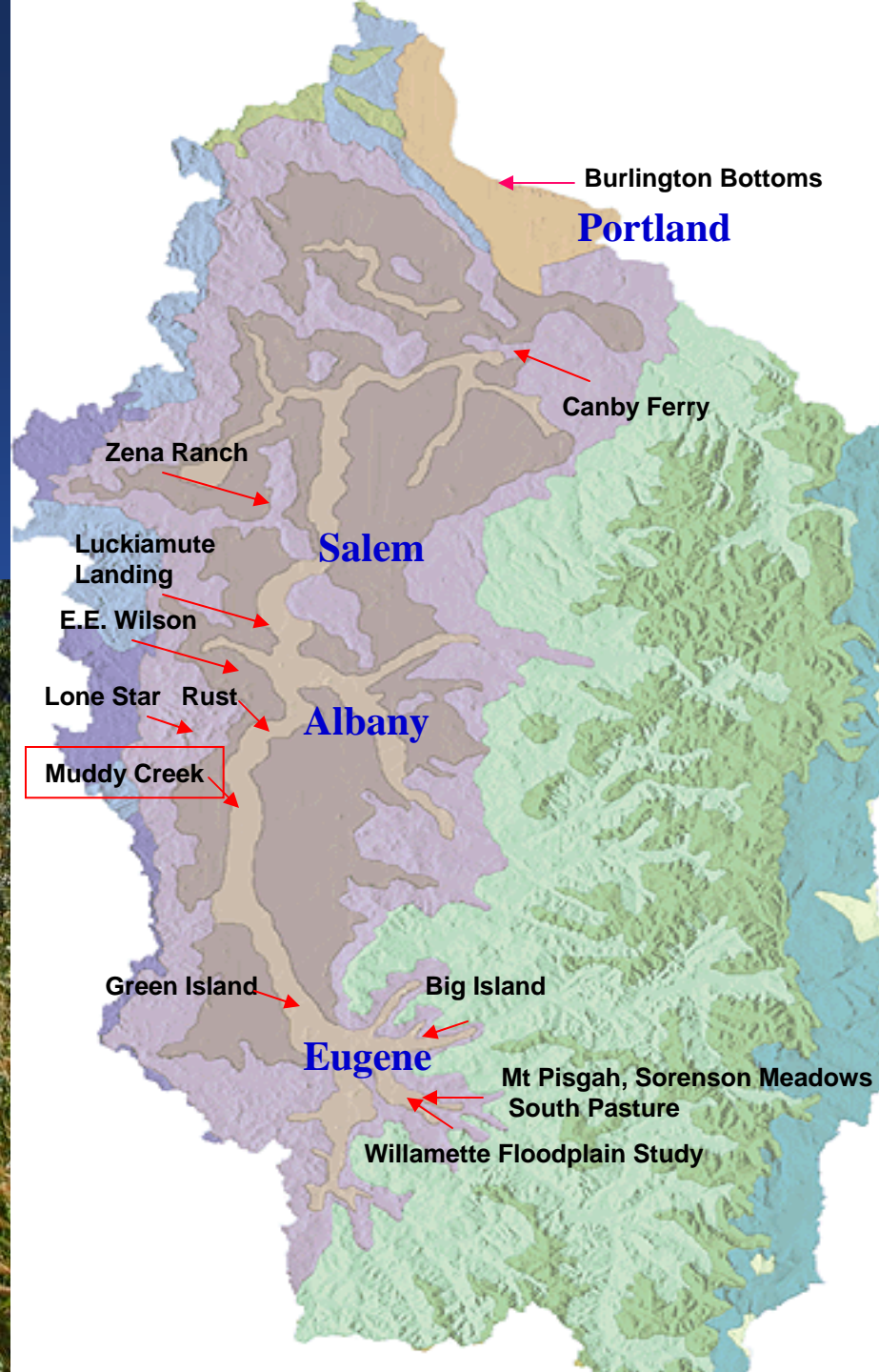
Upland/Wet Prairie

Riverine

Wetlands



Willamette Subbasin Mitigation Projects



Muddy Creek Willamette Subbasin

Implemented in 1999

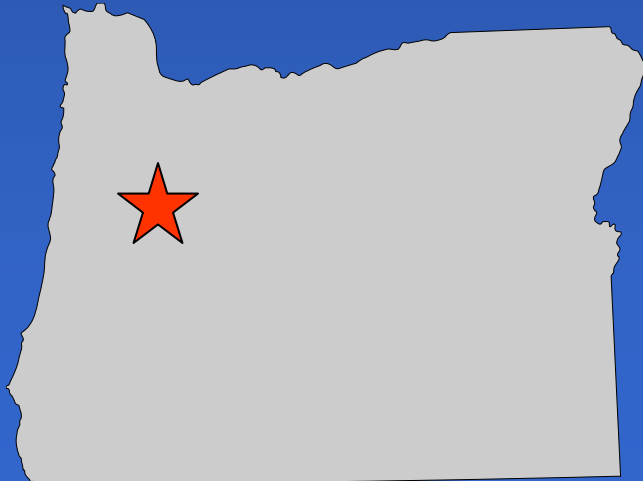
220 acres

Habitat Types:

Riparian Forest

Wet Prairie

Wetlands



Willamette Subbasin Mitigation Projects

Lone Star



Lone Star Willamette Subbasin

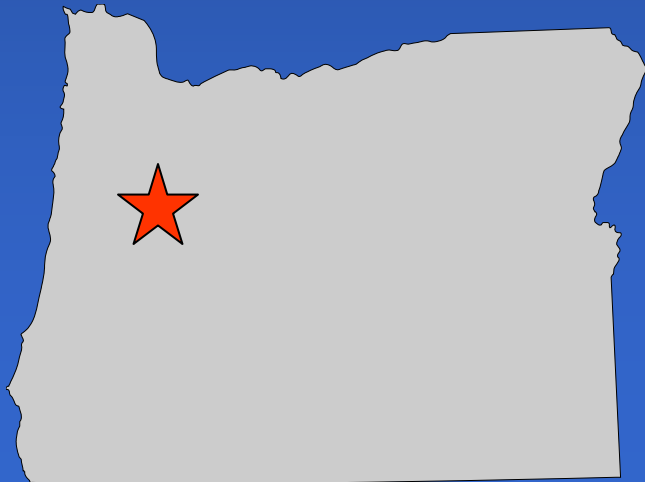
Implemented in 2008

200 acres

Habitat Types:

Upland Prairie

Oak Savanna





Willamette Subbasin Mitigation Projects

EE Wilson



EE Wilson Willamette Subbasin

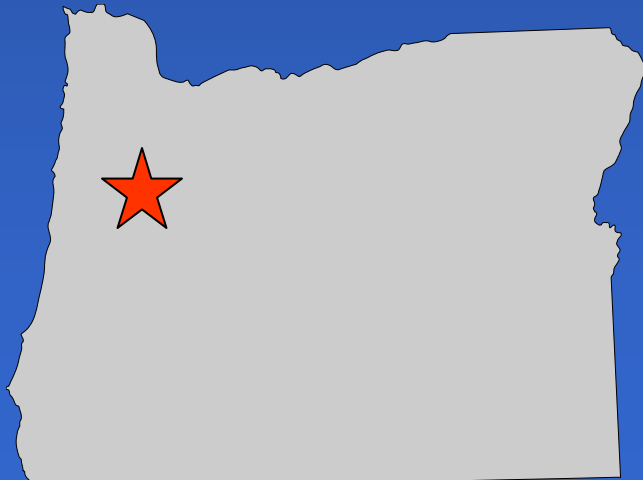
Implemented in 2006

150 acres

Habitat Types:

Upland/Wet Prairie

Wetland











Willamette Subbasin Mitigation Projects Zena Timber



Zena Forest

Willamette Subbasin

Implemented in 2007

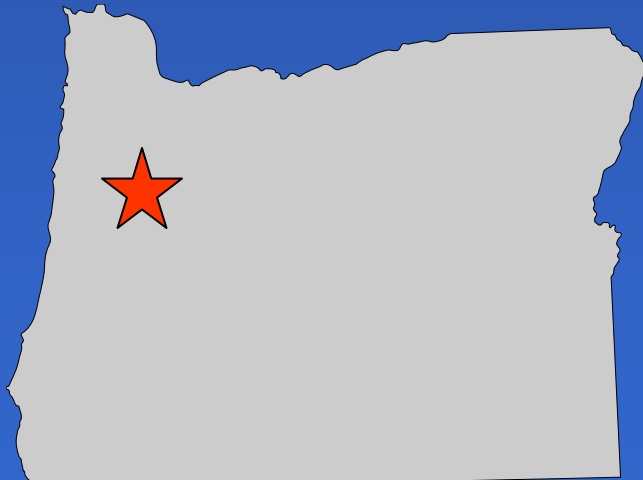
2000 acres

Habitat Types:

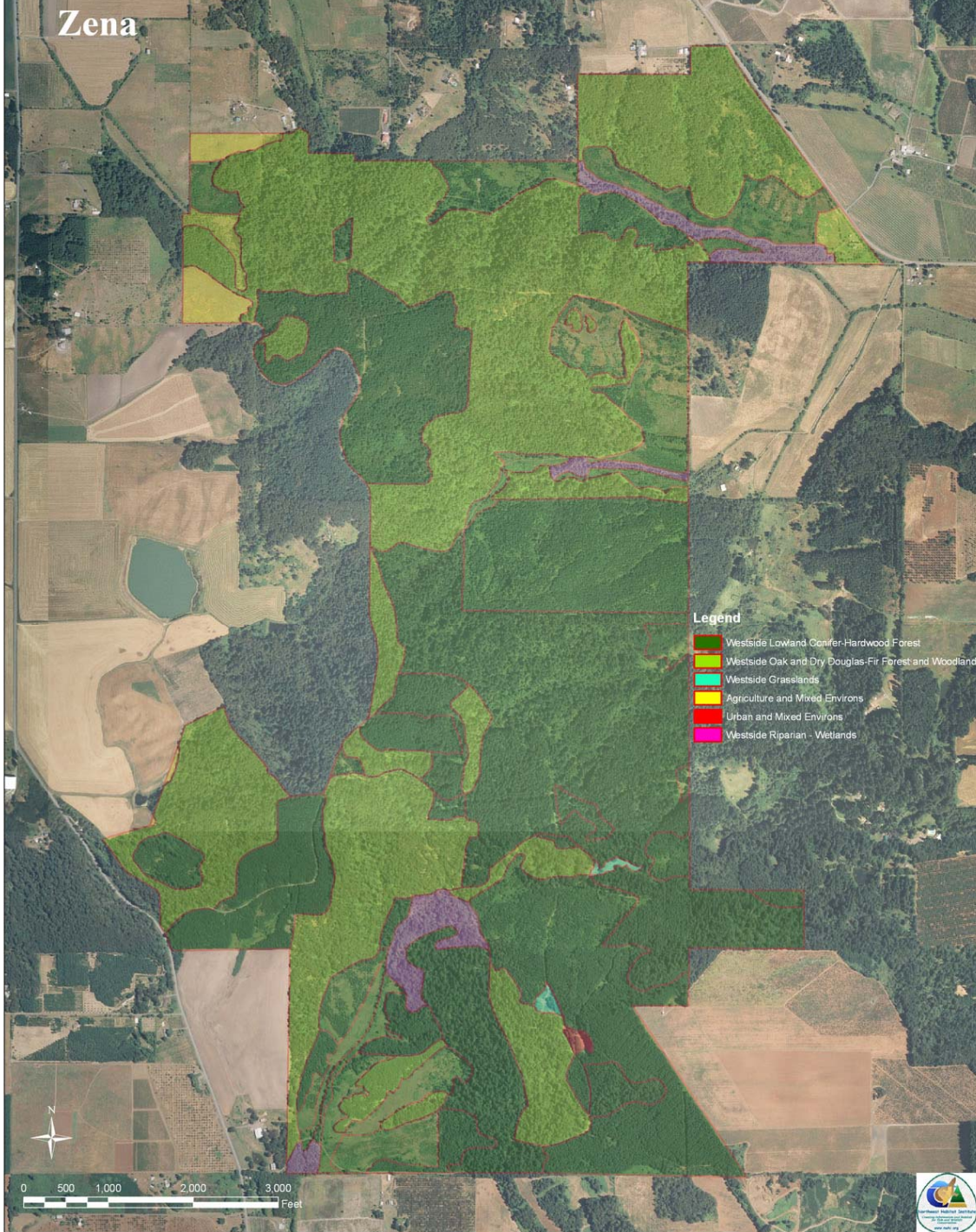
Upland Prairie

Oak Savanna/Woodland

Late Successional Conifer



Zena



- FSC Standards
- Sustainability
- Unique Partnerships
- Carbon Credits
- Aggregations





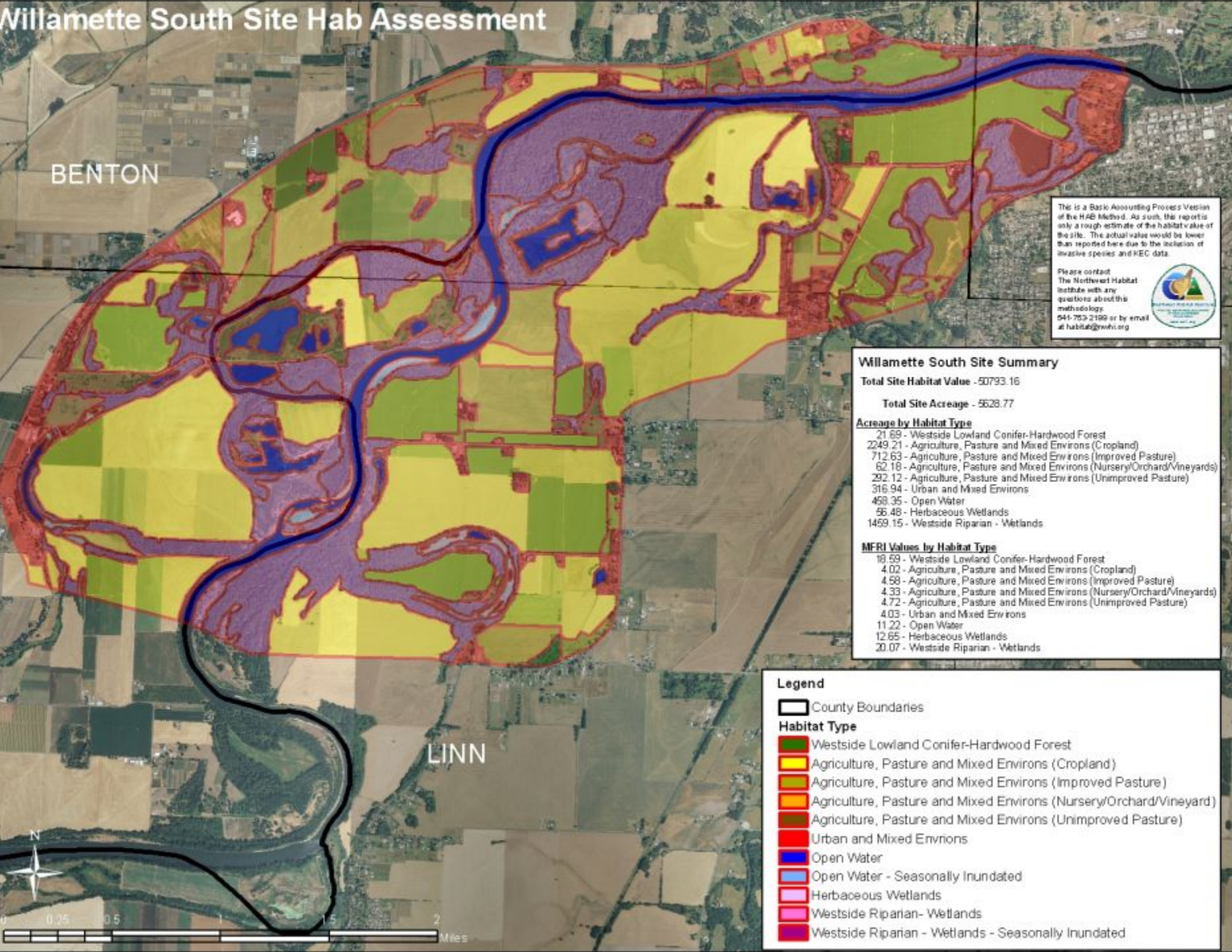
2009 Project Activities

Project Activities:

- **2 Willamette River Easements- 2009**
- **1 Luckiamute River Easement-2009**
- **On-going Projects**
- **Camp Adair**
- **Beaver**
- **Assessments and Management Planning**



Willamette South Site Hab Assessment



BENTON

LINN

This is a Basic Accounting Process Version of the HAB Method. As such, this report is only a rough estimate of the habitat value of the site. The actual value would be lower than reported here due to the inclusion of invasive species and KEC data.

Please contact The Northwest Habitat Institute with any questions about this methodology:
 503-753-2199 or by email at ahabitat@nwhi.org



Willamette South Site Summary

Total Site Habitat Value - 50793.16

Total Site Acreage - 5528.77

Acreage by Habitat Type

- 21.69 - Westside Lowland Conifer-Hardwood Forest
- 2249.21 - Agriculture, Pasture and Mixed Environs (Cropland)
- 712.63 - Agriculture, Pasture and Mixed Environs (Improved Pasture)
- 62.16 - Agriculture, Pasture and Mixed Environs (Nursery/Orchard/Vineyards)
- 292.12 - Agriculture, Pasture and Mixed Environs (Unimproved Pasture)
- 316.94 - Urban and Mixed Environs
- 458.35 - Open Water
- 56.48 - Herbaceous Wetlands
- 1459.15 - Westside Riparian - Wetlands

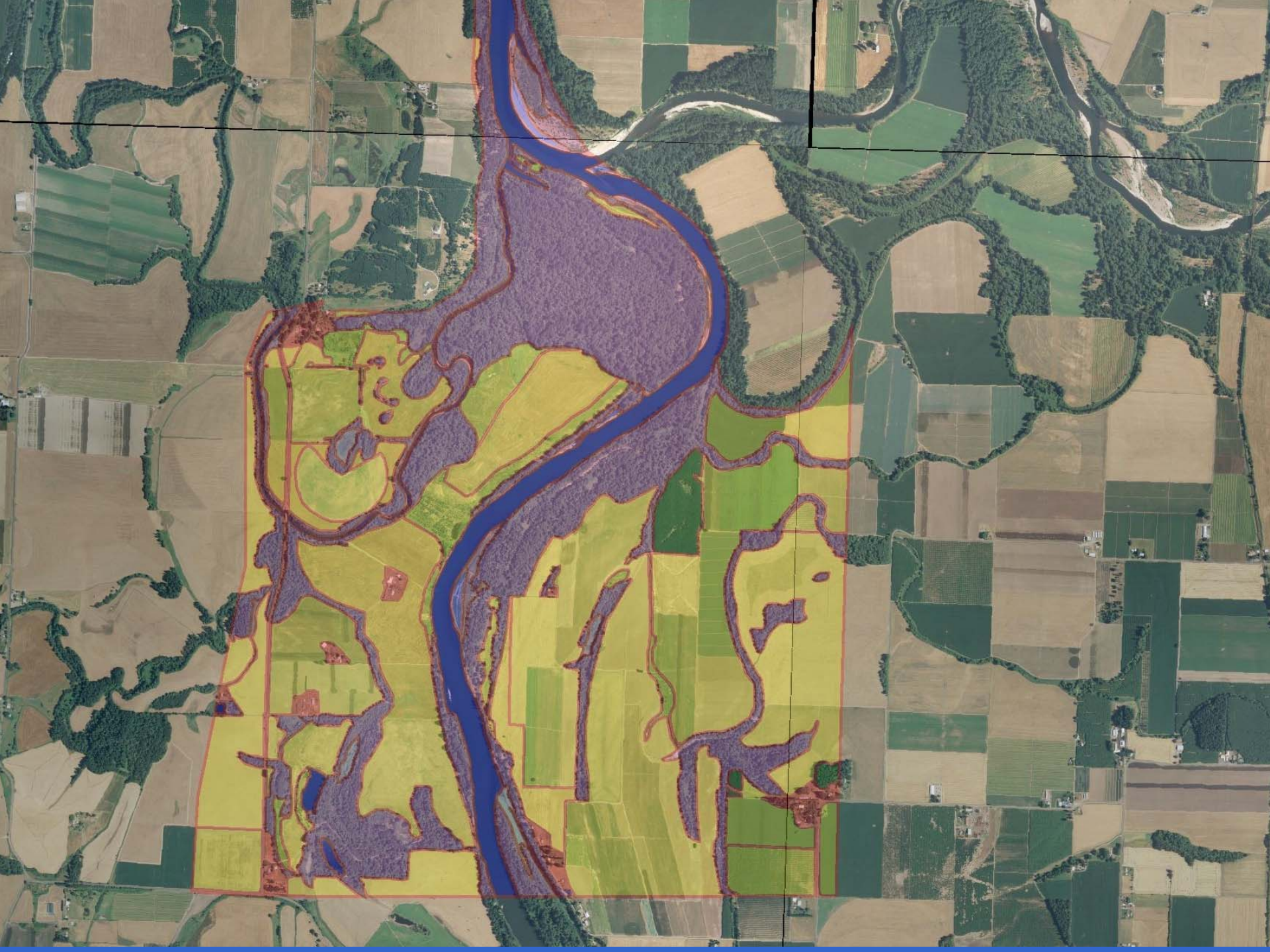
MRFI Values by Habitat Type

- 18.69 - Westside Lowland Conifer-Hardwood Forest
- 4.02 - Agriculture, Pasture and Mixed Environs (Cropland)
- 4.58 - Agriculture, Pasture and Mixed Environs (Improved Pasture)
- 4.33 - Agriculture, Pasture and Mixed Environs (Nursery/Orchard/Vineyards)
- 4.72 - Agriculture, Pasture and Mixed Environs (Unimproved Pasture)
- 4.03 - Urban and Mixed Environs
- 11.22 - Open Water
- 12.65 - Herbaceous Wetlands
- 20.07 - Westside Riparian - Wetlands

Legend

- County Boundaries
- Habitat Type**
- Westside Lowland Conifer-Hardwood Forest
- Agriculture, Pasture and Mixed Environs (Cropland)
- Agriculture, Pasture and Mixed Environs (Improved Pasture)
- Agriculture, Pasture and Mixed Environs (Nursery/Orchard/Vineyard)
- Agriculture, Pasture and Mixed Environs (Unimproved Pasture)
- Urban and Mixed Environs
- Open Water
- Open Water - Seasonally Inundated
- Herbaceous Wetlands
- Westside Riparian- Wetlands
- Westside Riparian - Wetlands - Seasonally Inundated





Monitoring and Evaluation

- **Biological Assessments**
- **Management Planning**
- **On-going Surveys (Avian, Herps, Aquatic, Plants etc)**



Monitoring and Evaluation

- **Conservation Strategy: Fish and Wildlife Monitoring Team**
 - **Selection of Strategy Species**
 - **Associations with Strategy Habitats**



