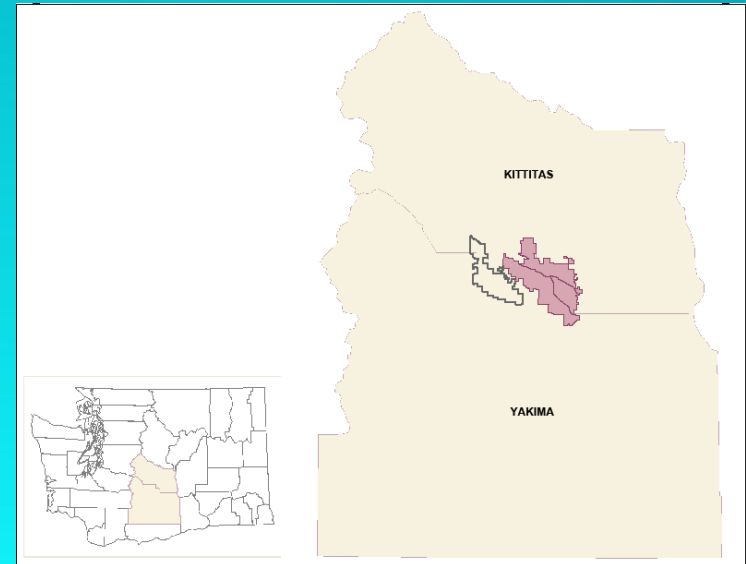
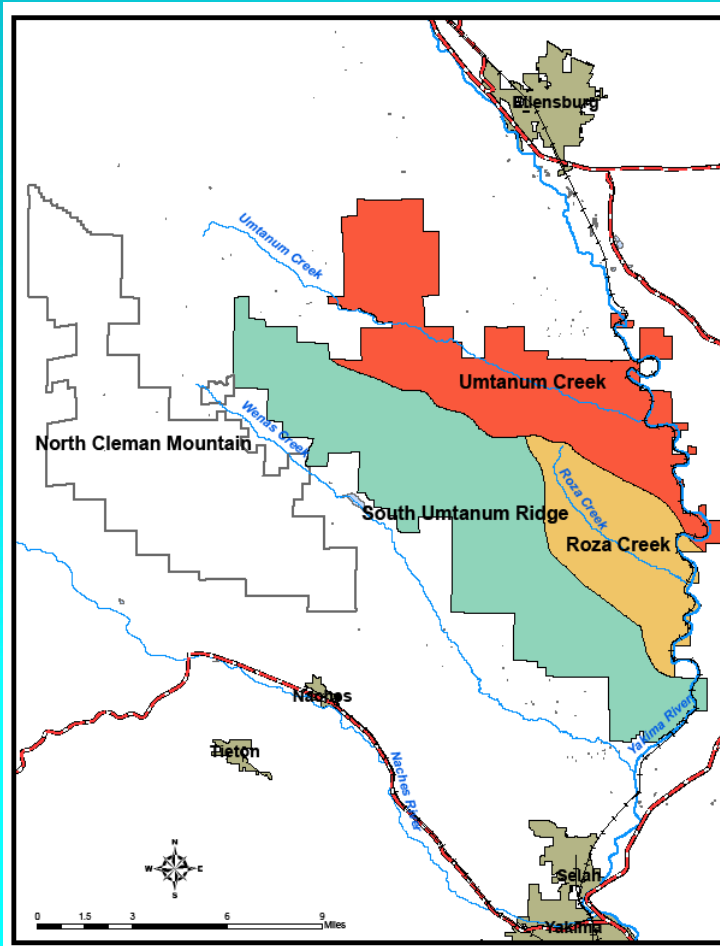


# Wenas Wildlife Area

BPA Project #2006-004-00



*Presentation to ISRP  
March 2009  
Cindi Confer*

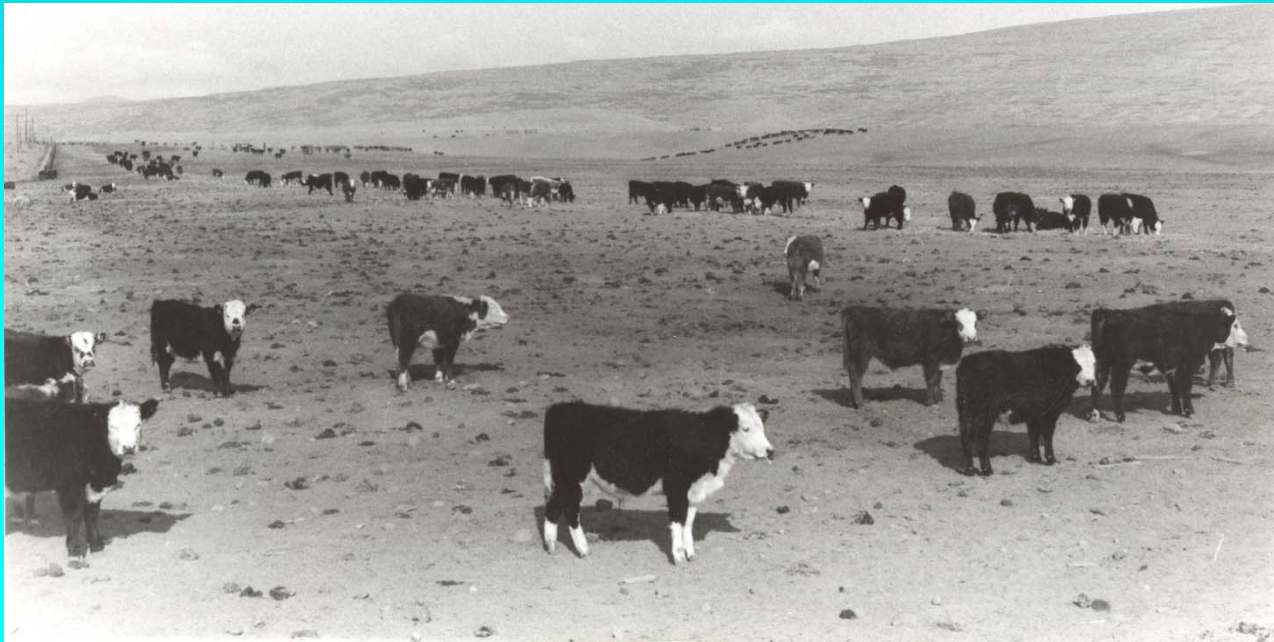
# Area History: Landscape

- Pre settlement
  - Villages & camps along Rivers and Streams
  - Deer & Salmon were staples in the diet
  - Large, intact expanses of shrub-steppe habitat



# Area History: Landscape

- Early settlement
  - Farming limited to areas near rivers & streams
  - Heavy grazing of sheep & cattle occurred throughout the area into the 1960's



# Project History: Acquisition

- Acquired through multiple purchases in the 1960's
- Created in 1997 by combining units from the Oak Creek & L.T. Murray Wildlife Areas
- Originally acquired for deer, elk and upland bird habitat



# Project History: Early Management

- Year-round grazing & winter feedlots were prevalent throughout the Wildlife Area
- One of the largest domestic sheep operations in the State was located in the South Umtanum Ridge Unit
- Dryland farming occurred on portions of the South Umtanum Ridge Unit
- Years of soil disturbance, uncontrolled vehicle use, and fires have contributed to widespread weed infestations throughout the Wildlife Area

# Project History: Early Management



# Acreeage & Habitat Types

- 74,212 acres funded by BPA (105,461 total acres)
- Primary Habitat types on BPA-funded portion are:
  - Shrub-steppe/grassland: 71,777 acres
  - Conifer forest: 1,390 acres
  - Riparian and Riverine: 1,045 acres
- Provides 19,254 Habitat Units of protection credit for six wildlife mitigation species



# Wildlife Mitigation Species

- Mule deer
- Sage-grouse
- Western meadowlark
- Black-capped chickadee
- Yellow warbler
- Mink
- Mitigation for wildlife losses for Grand Coulee, McNary and John Day dams





# Management Goals

- Provide protection credit and protect and enhance habitat (19,254 HUs)
- Protect, Enhance, and Manage:
  - Shrub steppe habitat
  - Forest habitat
  - Riparian habitat
  - Improve water quality
- Monitor wildlife and habitat response to management



# Relationships to other projects

- L.T. Murray and Oak Creek Wildlife Areas
- Yakima Training Center
- Quilomene & Whiskey Dick Wildlife Areas
- Sunnyside Wildlife Mitigation (200201400)
- Hanford Monument/ALE
- Lower Yakima Valley Riparian/W (199206200)
- Yakima Basin Side Channels (199705100)
- Scotch Creek, Sagebrush Flat, Asotin Creek, & Swanson Lake Wildlife Areas

# Major Accomplishments

- Enhanced native vegetation through planting of native vegetation, removal of undesirable vegetation, and noxious weed control.

1,280 acres restored with native  
& native-like seedings

775 acres fertilized

1,200 acres of annual weed treatment

50-75 miles of annual roadside weed treatment



# Major Accomplishments

- Protected and enhanced wildlife habitat:
  - Removal of 82 miles of old stock fence
  - Maintenance of 8.6 miles of fire breaks along private ownership interface
- Protected and enhanced habitat and water quality:
  - Abandoned 7 miles of stream adjacent road
  - Maintained 7.5 miles of road



# Major Accomplishments

- Provide regulated public access and exclude trespass livestock grazing
  - Maintain 26 miles of boundary fence
  - Installed 9.25 miles of smooth wire fence & barrier rock



# Future Work

- Maintain Enhancements
- Continue Weed Treatments across Wildlife Area
- Control Access
- Establish Forb component into enhancements
- Assess Riparian habitat for restoration needs
- Inventory Timber stands for thinning/burning
- Monitor Habitat & Wildlife

# Threats

- Uncontrolled Public Use
- Invasive Plant & Animal Species
- Uncontrolled fire
- Insects & Disease

# Monitoring - Proposed

- Conduct habitat/wildlife surveys on systematic basis
- Monitor habitat/wildlife response due to burns
- Monitor habitat/wildlife response to specific restoration efforts.
- Monitor infestations & treatments of noxious weeds.
- Compile data in databases for storage & analysis.
- Analyze habitat – wildlife relationships in reference to management targets.
- Use updated species-habitat evaluations to re-evaluate management direction (adaptive management)



# Monitoring - Current

- Baseline HEP Assessment: 67 transects completed
- Action effectiveness monitoring: 125 nested frequency plots ; 52 have been revisited
- Big Game Exclosures: 5 exclosures installed between 1968 & 2003.
- Weed Monitoring: GPS-based survey data stored in long-term database.
- Big game composition surveys: Deer & elk winter surveys; Big horn sheep spring surveys

# Budget

- FY2010: \$ 448,442
- FY2011: \$ 445,109
- FY2012: \$ 802,685  
(includes office constr)
- FY2013: \$485,818
- FY2014: \$600,184
- FY2015: \$515,810
- FY2016: \$531,179
- FY2017: \$613,979
- FY2018: \$599,851

# Cost Share

- FY2010: \$ 260,299
- FY2011: \$ 261,673
- FY2012: \$ 640,510
- Add'l 2.5% inflation/yr.

# Typical Annual Budget

# Staffing

- Wildlife Area Manager: 1 fte
- Assistant Wildlife Area Manager: 0.75 fte
- 2 Natural Resource Technicians: 1.5 fte
- Habitat Technician: 0.25 fte