



COLUMBIA BASIN FISH AND WILDLIFE AUTHORITY

**CBFWA Wildlife Habitat Evaluation Procedures (HEP)
(2006-006-00)**

*Presented to ISRP
By
Paul R Ashley*



5/17

Regional HEP TEAM Presentation Overview

- HEP 101 Refresher
- Regional HEP Team (RHT) Activities
 - RHT Present Time (2004 to Present)
- Current Status
- Project Needs



HEP 101

- Habitat Evaluation Procedures (HEP) developed by USFWS in late 1970s...to answer one question:
- **“How much will it cost if we build it?”**
 - “Currency” is the habitat unit (HU)



HEP 101

- HEP was and continues to be used to account for habitat losses associated with construction of hydro facilities and habitat gains from mitigation/compensation projects
 - Impacts summarized as habitat units (HU)
 - “HU ledger” (Table 11-4; NPCCC’s Program)
 - Habitat losses were summarized in the “Brown Books”
 - Both HU losses and gains were estimated using cover type specific HEP species models



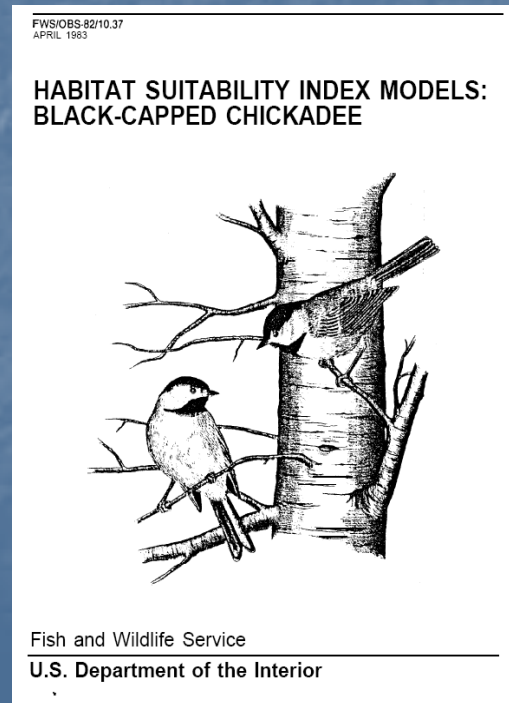
Loss Assessment Documents



HEP 101

HEP Model Example

HSI Model : Black-capped Chickadee



HEP 101 Summary

- HEP is an Accounting Tool used to quantify habitat losses (HU loss ledger) and,
- Measure credit towards the losses
- HEP is not used to:
 - Monitor project effectiveness towards most floristic, biological, or ecological objectives
 - Monitor species population response



Regional HEP Team Activities (2004 to Present)



REGIONAL HEP TEAM

- FY 2004 & FY2005: RHT conducted HEP surveys for YN, STOI, CCT, Kalispel, Umatilla, Coeur d' Alene, Nez Perce, and Burns-Paiute Tribes, WDFW, IDFG, ODFW, and TNC
 - Conducted two 4-day HEP Training Courses
 - Compiled HEP data, drafted HEP reports etc.



REGIONAL HEP TEAM (cont.) (2004 to Present)

- FY2006 - 2008: RHT conducted HEP surveys for Kalispel, STOI, CCT, YN, CDA, BPT, and Shoshone-Bannock Tribes, WDFW, IDFG, TNC, and USACOE
 - Conducted two 4-day HEP Training Courses
 - Compiled HEP data, drafted HEP reports etc.
 - **Partnered with NHI to develop CHAP methodology for use in the Willamette Valley, Oregon**



Current Situation



What is the
status of
Columbia River
Wildlife
Mitigation
Crediting?

Current Situation

- Don't know crediting status
 - Inconsistencies in HU stacking/reporting
 - Differences in loss assessments
 - Lack of cover type/species matrices in some cases
 - "Total" losses versus "Net" Losses
 - Difficult to determine HEP needs prior to Pisces "tool"
 - Pisces HEP data inputs from reports/info provided by managers
- HEP follow-up surveys behind schedule (based on five year intervals)
 - HEP survey needs identified in Pisces for FY 2009



| Sponsor | Project | Acres | EWD^A | HEP Type |
|--------------------|----------------------------|--------------|------------------------|-----------------|
| Burns Piaute Tribe | Malheur (Denny Jones) | 44,762 | 10 | Follow-up |
| IDFG | Boise River | 166 | 3 | Follow-up |
| IDFG | Kruse Pine Creek Easement | 800 | 5 | Follow-up |
| IDFG | Tex Creek WMA | 2,135 | 6 | Follow-up |
| IDFG | Winterfield Easement | 422 | 2 | Follow-up |
| IDFG | Centennial Marsh | 1,500 | 4 | Baseline |
| IDFG | Beaver Dick | 300 | 3 | Follow-up |
| Kalispel Tribe | Beaver Lake | 462 | 4 | Follow-up |
| Kalispel Tribe | Flying Goose 2 | 156 | 2 | Follow-up |
| Kootenai Tribe | Kootenai River Flood Plain | 112 | 2 | Baseline |
| Nez Perce | Precious Lands | 16,286 | 10 | Follow-up |
| ODFW | Burlington Bottoms | 417 | 5 | Follow-up |
| ODFW/TNC (CHAP) | Various sites (8) | 7,000 | 40 | Baseline |
| Shoshone Bannock | Soda Hills | 2,563 | 10 | Follow-up |

| Sponsor | Project | Acres | EWD ^A | HEP Type |
|--------------------|------------------------------|----------------|------------------|-----------|
| STOI | Fox Creek | 200 | 1 | Follow-up |
| STOI | McCoy Lake | 2,157 | 10 | Follow-up |
| Umatilla Tribe | Iskuulpa | 5,937 | 10 | Follow-up |
| Umatilla Tribe | Rainwater | 8,768 | 10 | Follow-up |
| USFWS | LPO NWR | 906 | 5 | Follow-up |
| USFWS | Steigerwald Lake NWR | 317 | 5 | Follow-up |
| USFWS | Tualatin Rver NWR | 227 | 5 | Follow-up |
| Warm Springs Tribe | Pine Creek | 25,146 | 10 | Follow-up |
| WDFW | Schlee (Asotin WA) | 7,000 | 10 | Follow-up |
| WDFW | Eder Phase II | 1,500 | 4 | Baseline |
| WDFW | Dagnon Acquisition | 1,200 | 4 | Baseline |
| Yakama Nation | Satus WA etc. | 8,000 | 15 | Follow-up |
| CCT | Agency Butte Management Area | 3,158 | 5 | Follow-up |
| CCT | Berg Ranch Management Area | 8,115 | 6 | Follow-up |
| CDA Tribe | Elk Horn | 608 | 3 | Baseline |
| CDA Tribe | St. Joe | 87 | 1 | Baseline |
| CDA Tribe | Hepton Lake | 143 | 1 | Baseline |
| CDA Tribe | Windy Bay | 147 | 1 | Baseline |
| US Forest Service | Sandy River Delta | 100 | 4 | Follow-up |
| Total | | 147,297 | 216 | |
| Unknown | New projects | ?????? | ??? | Baseline |

Current Situation (cont.)



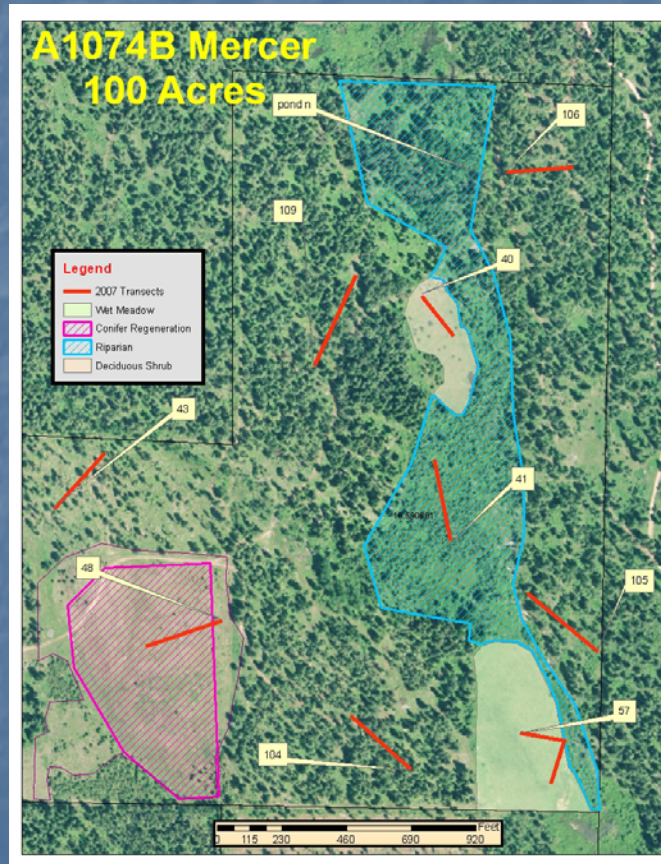
- **Determined HEP is not the appropriate crediting tool for Willamette Valley mitigation projects**
 - Original HEP surveys not repeatable
 - Used “checklists” not HEP models (few models available)
 - HU “stacking” issues
 - Habitat and species priorities have changed since loss assessment HU estimates were derived
 - Sub-basin Plans focus on oak savannah, Willamette Valley prairie/associated wildlife species etc.....not elk and upland conifer forests....(out of kind, out of place mitigation)
 - Little to no public, NGO, or Agency support for HEP in the Willamette Valley – Conclusion: **New Crediting Tool Needed**

Current Situation (cont.)

- Preliminary assessment of Combined Habitat Assessment Protocols (CHAP) as a crediting “tool” for the Willamette Valley showed promise for overcoming crediting issues
 - CHAP combines elements of HEP with NHI’s HAB program
 - CHAP does not require HEP models
 - Eliminates evaluation species, “out of kind” “out of place” concerns
 - Eliminates HU “stacking” issues
 - Is ecologically more robust than HEP
 - Is repeatable



FY 2010+ Project Needs



CBFWA HEP Project Needs

- Fund additional full time assistant, temporary technician, and fund/implement CHAP in the Willamette Basin
 - Benefits
 - Conduct new baseline surveys and make significant “headway” completing backlog of follow-up surveys
Complete HEP results and reports in a timely manner
 - Complete review of loss assessment matrices and project HU crediting
 - Determine “crediting” for Willamette Valley mitigation sites based on the CHAP methodology



QUESTIONS?

Proposed Budgets

- FY 2010: \$575,619 (NHI \approx \$133,000)
- FY 2011: \$585,391 (NHI \approx \$136,000)
- FY 2012: \$600,026 (NHI \approx \$140,000)