

Richard Devlin
Chair
Oregon

Ted Ferrioli
Oregon

Guy Norman
Washington

Patrick Oshie
Washington



Northwest **Power and** **Conservation** Council

Bo Downen
Vice Chair
Montana

Jennifer Anders
Montana

Jim Yost
Idaho

Jeffery C. Allen
Idaho

15 July 2020

MEMORANDUM

TO: Council Members

FROM: Stacy Horton, Washington State Staff

SUBJECT: Briefing by Kelly Susewind, Director, Washington Department of Fish and Wildlife

BACKGROUND:

Presenter: Kelly Susewind, Director of Washington Department of Fish and Wildlife (WDFW).

Summary: Mr. Susewind has been the Director of Fish and Wildlife for WDFW since August 2018. Kelly has been reaching out to communities in order to further discussions around policy issues and their development as they relate to fish and wildlife. His presentation will provide an overview of WDFW's role in fish and wildlife conservation and sustainable harvest, and also touch on the highlights of WDFW's work in Washington's portion of the Columbia Basin, including the agency's role in scientific research and monitoring, hatcheries, habitat restoration, harvest, and in mitigating for the impacts of hydropower on fish and wildlife.

Update to NWPCC: Conservation through Collaborative Ecosystem Management

Kelly Susewind, Director

July 15, 2020





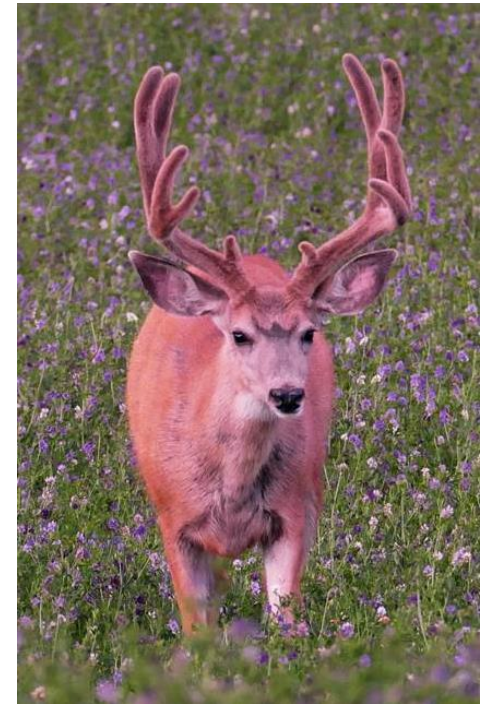
Overview

- WDFW: Who we are
- Current Hot Topics
- Implementing the Council's Fish and Wildlife Program – Collaborative Approaches
- Regional Partnerships
- Building for the Future

WDFW Mission

Conserve fish, wildlife, and habitat.

Provide sustainable recreational and commercial opportunities.



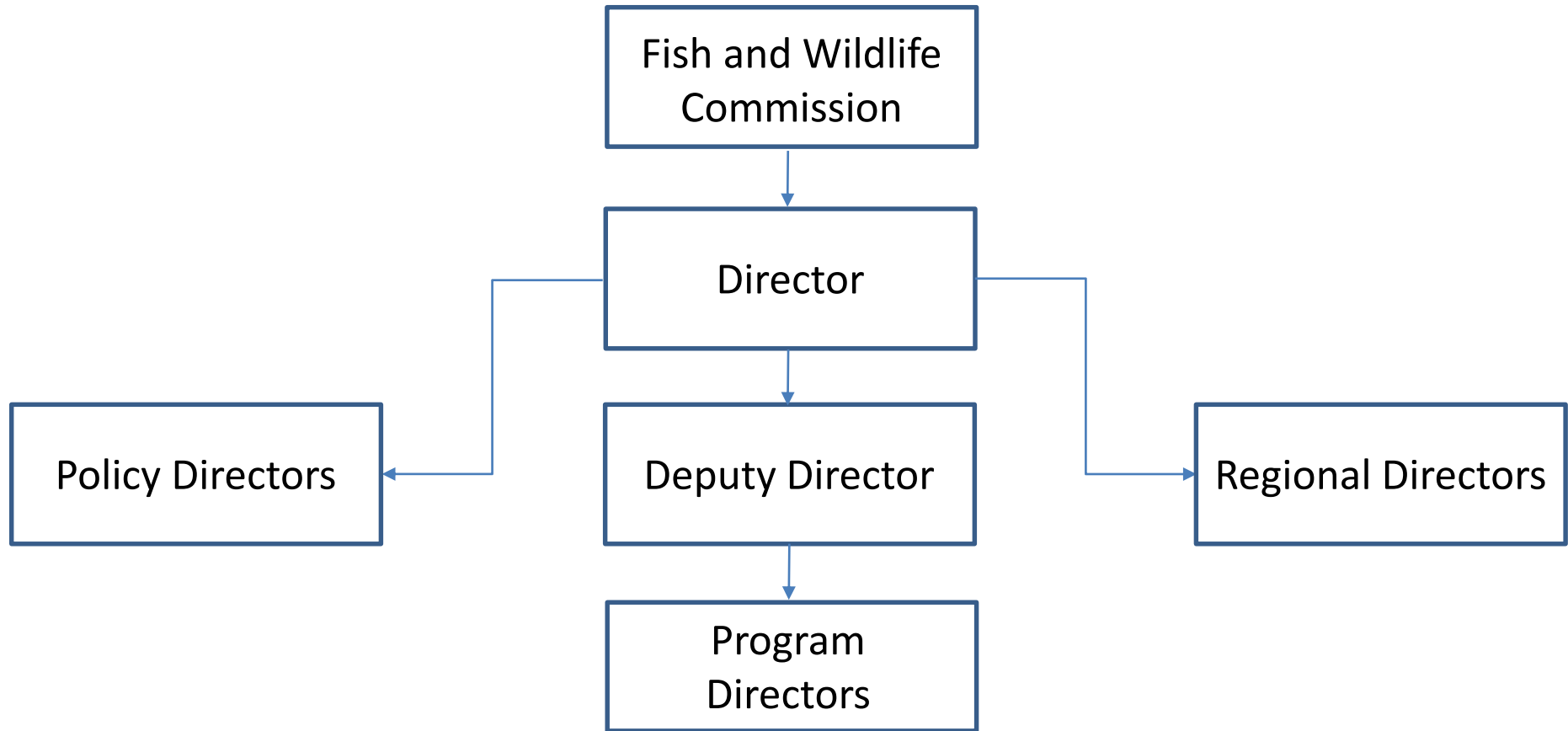
WDFW Activities

In Order To...

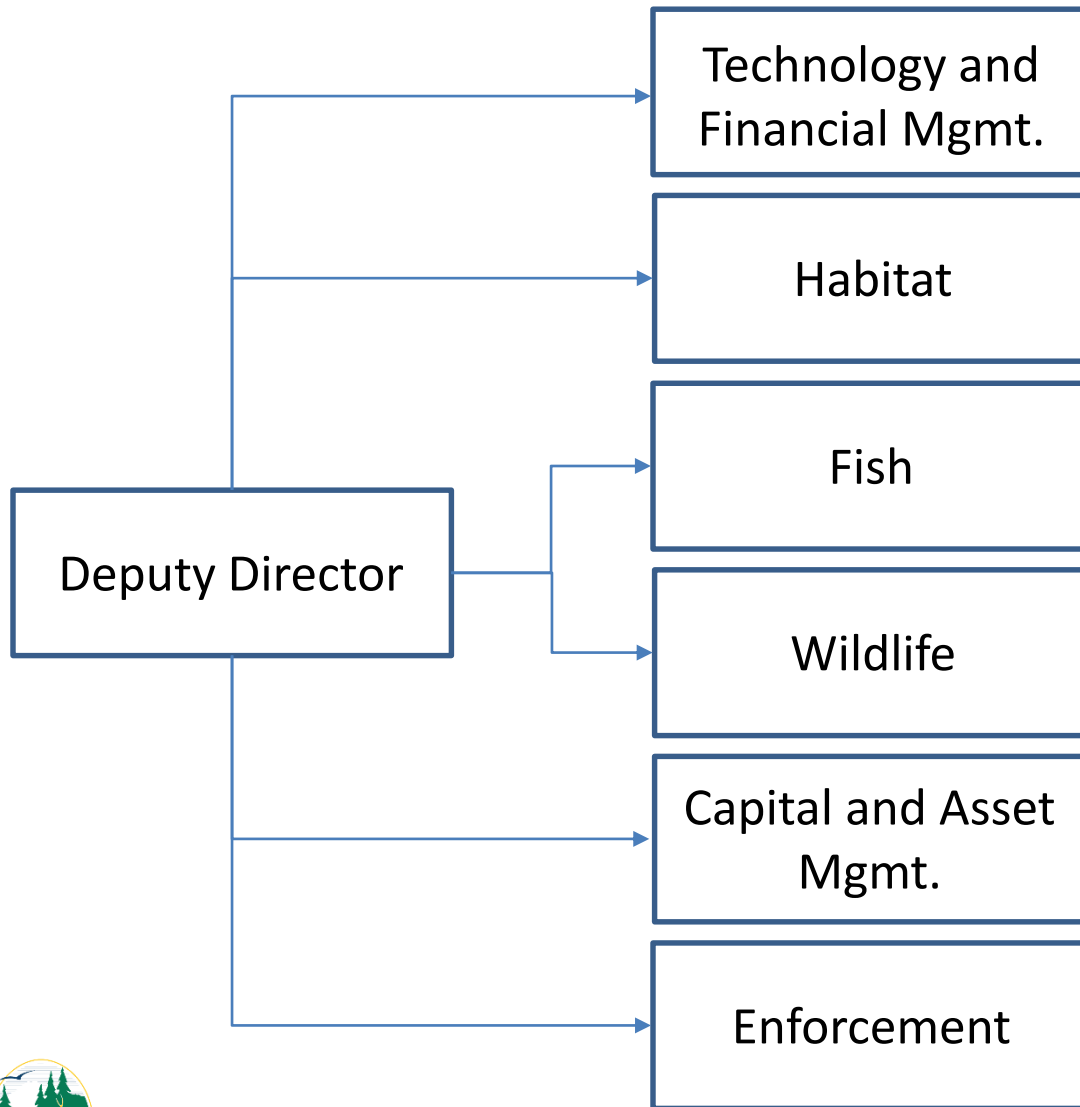
- ...Preserve, Protect, and Perpetuate Fish, Wildlife, and Ecosystems, we:
 - Preserve and Restore Aquatic Habitat and Species
 - Acquire and Manage Lands
 - Preserve & Restore Terrestrial Habitat and Species
- ...Provide Recreational and Commercial Fishing Opportunities, we:
 - Manage Fishing Opportunities
 - Produce Hatchery Fish
- ...Provide Hunting Opportunities, we:
 - Manage Hunting Opportunities
- ...Provide Non-Consumptive Recreational Opportunities, we:
 - Provide & Facilitate Recreational Opportunities



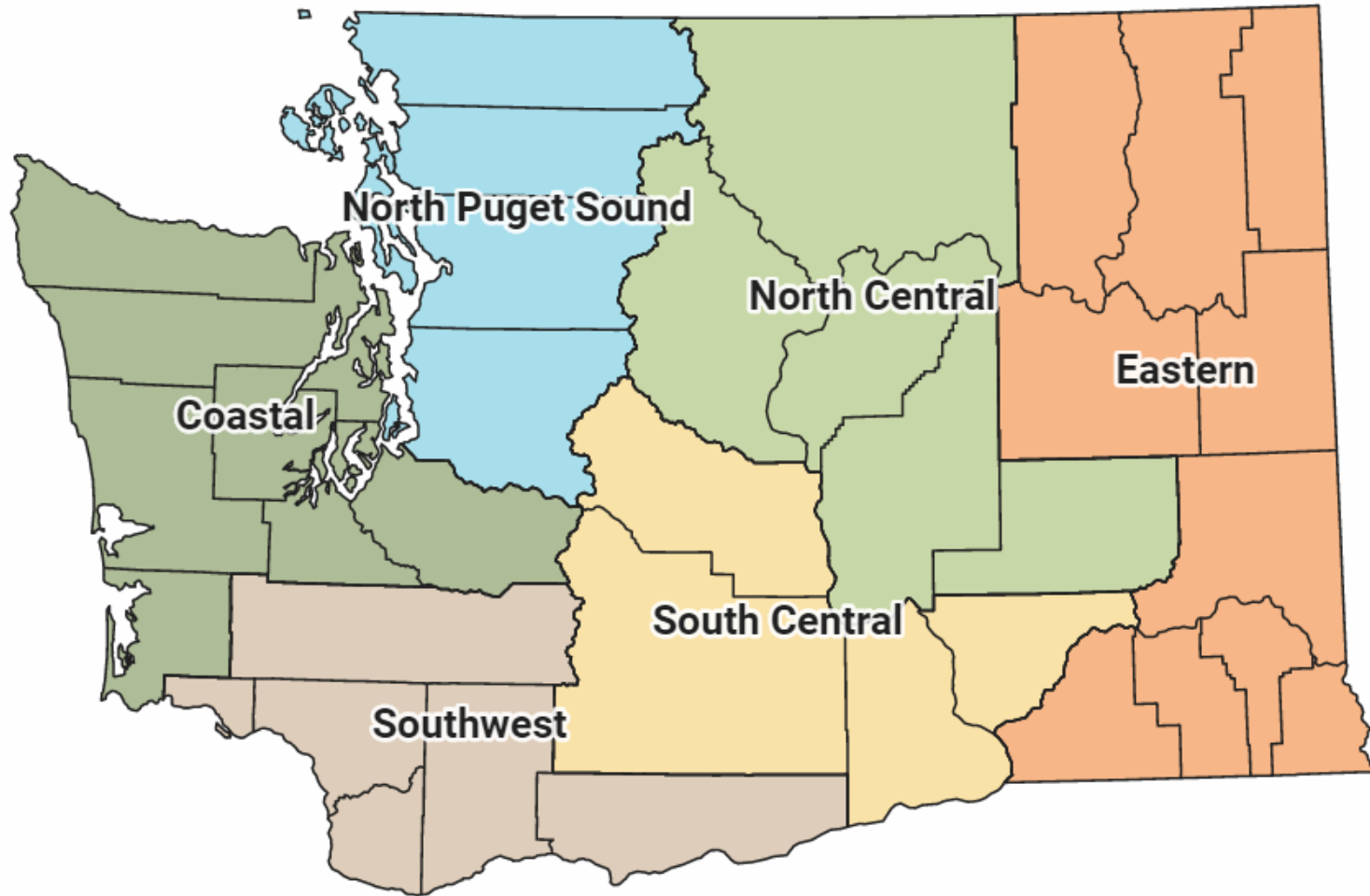
WDFW Organization



WDFW Program Organization



WDFW Regional Organization



WDFW's Economic Impact

Economic Activity in Washington

Hunting	\$0.3B
Sport Fishing	\$1.1B
Wildlife Watching	\$1.5B
Commercial Harvest/Wholesale	\$1.7B
<hr/>	
Total	\$4.6B

Department of Revenue, 2016

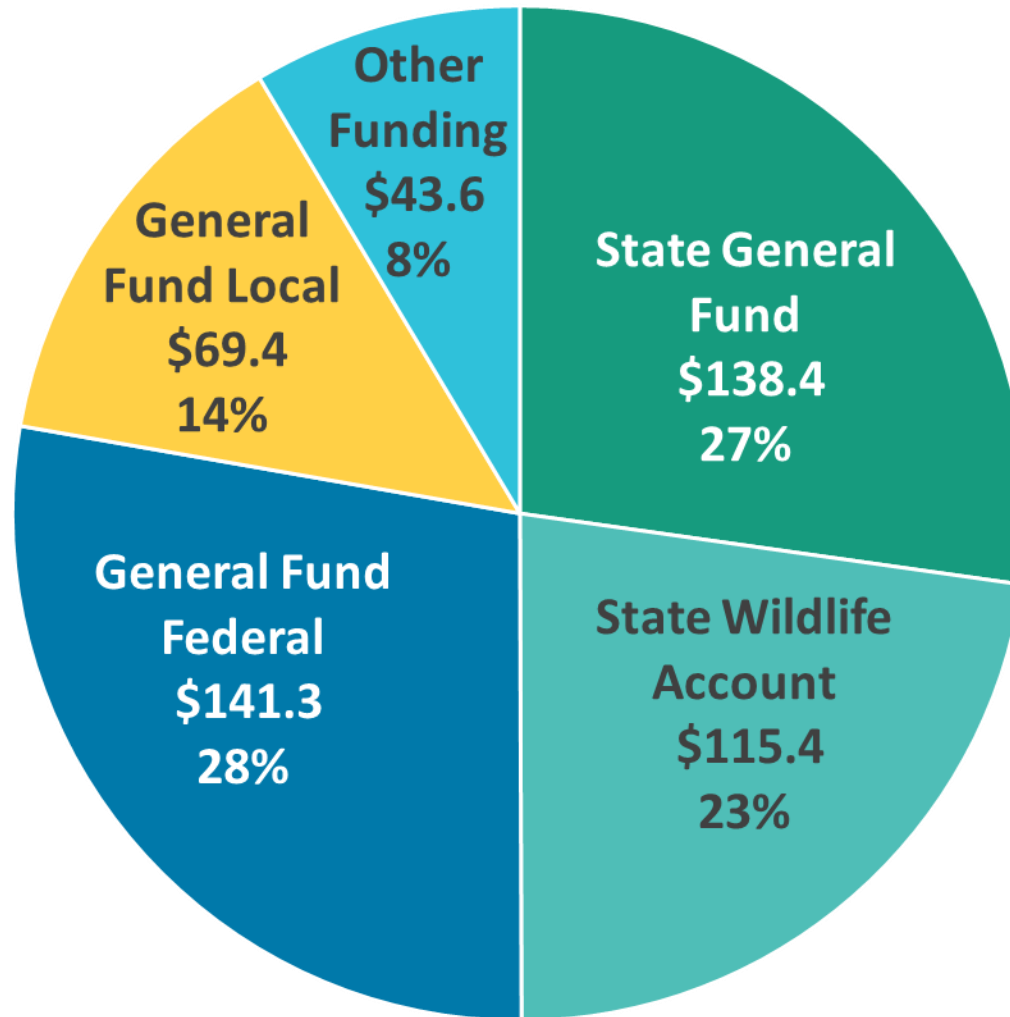
GF-S impact from Fishing/Hunting/Outdoor Rec:	\$339M/BN
GF-S in 2017-19 to WDFW:	\$94M/BN

~250% ROI for the state general fund
(when leveraged with other fund sources)



WDFW's Operating Budget

2019-21 Biennium (Dollars in millions)



WDFW's BPA/NPCC FWP Funding

- WDFW's BPA funding:
 - Direct from BPA
 - Fish-related: \$3.5M in FY2020, plus capital restoration projects on case-by-case basis
 - Wildlife areas: \$2.8M in FY2020
 - Subcontracts with tribes, federal agencies, and others: \$7M in FY2020

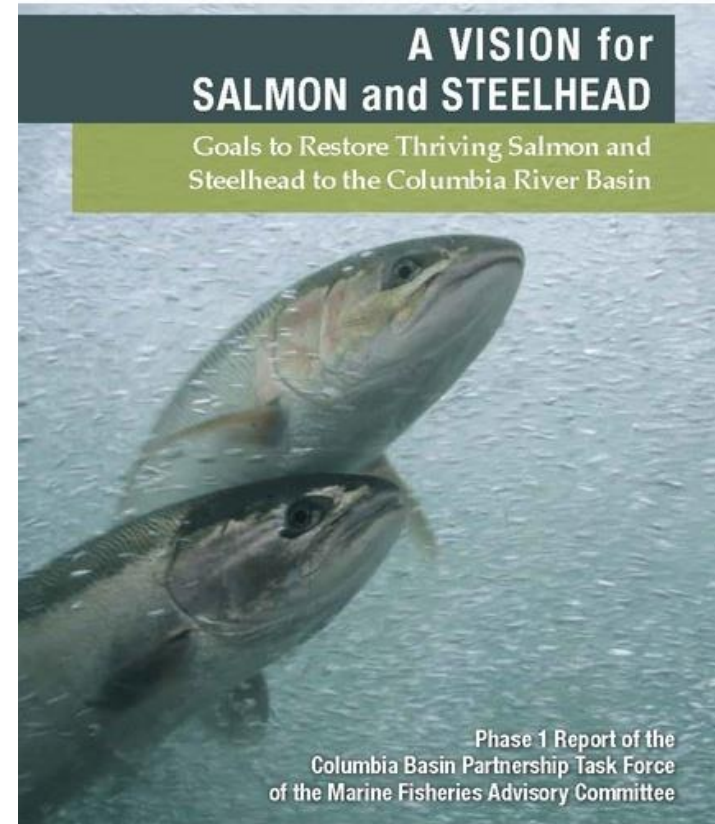
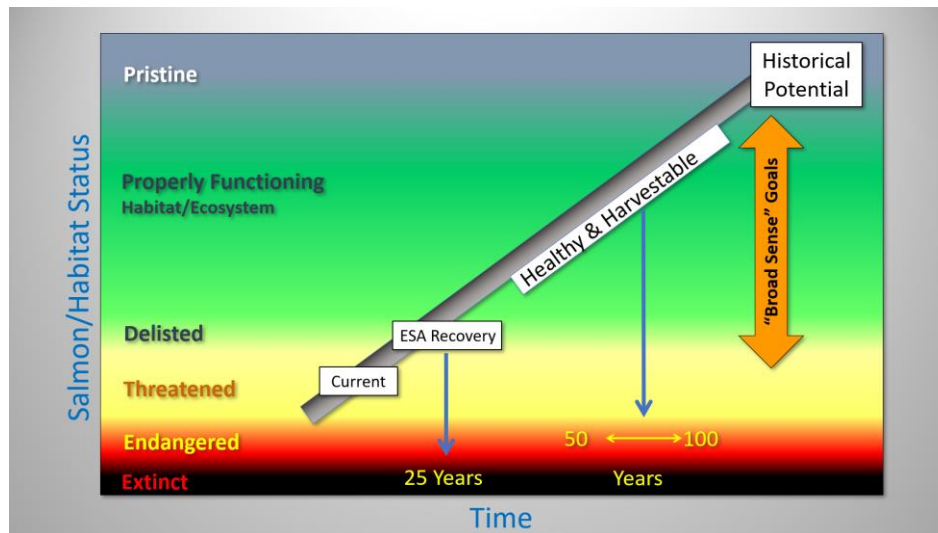


Hot Topics

- COVID-19 & budget cuts
- Wolves
- Southern resident killer whales



A collaborative approach to ecosystem management

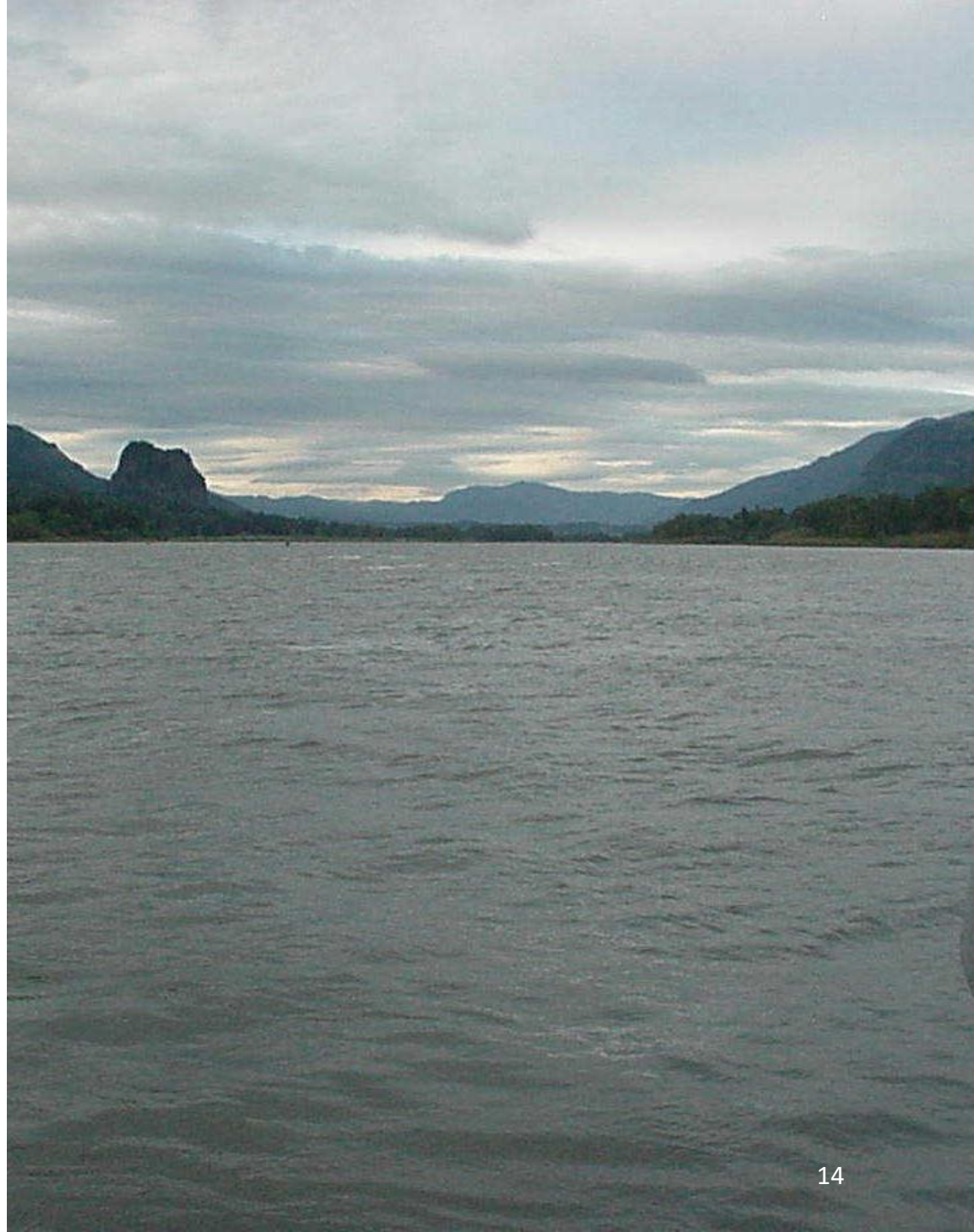


Implementing the Council's Fish and Wildlife Program: Examples of current collaborative efforts

- Restoration projects
- Fish screening program
- Research, Monitoring, and Evaluation
- Resident fish program
- Predation management
- Wildlife mitigation



Fish and Wildlife Program Amendment Process



Estuary Restoration



Chum Recovery in the Lower Columbia River

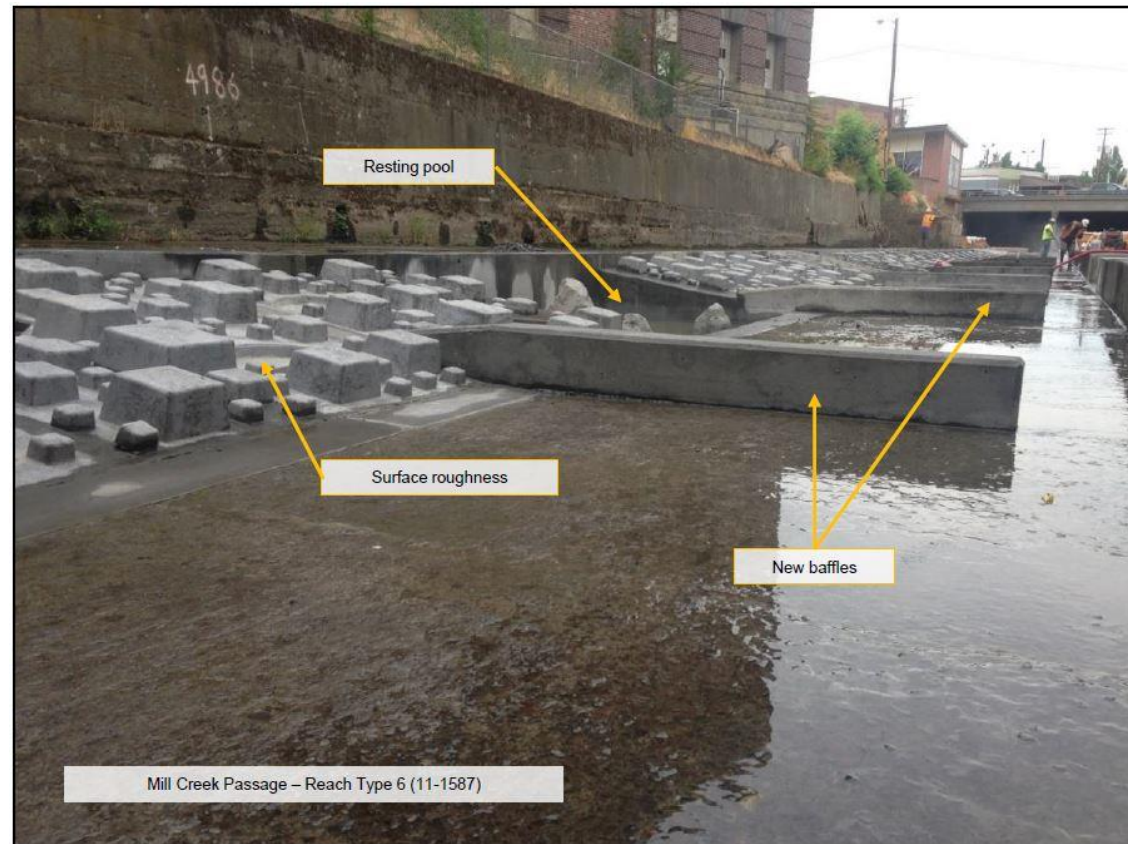


Walla Walla River Basin: Retrofitting Mill Creek Concrete Channel

New Baffles- create backwatering and depth to allow passage at low flows. Designed to focus velocities away from passage lanes.

Overbank and Surface Roughness- designed to slow flows and create a boundary area for resting and passage.

Resting Pools- Pools are spaced to allow smaller fish (e.g., Bull Trout) to migrate and rest through a larger range of flows.



WDFW – Fish Screening Program



Wilson-Bull fish screen facility,
Ellensburg, WA. O&M funded by BPA



Potential outcome of non-compliant
screening and/or operations



Salmon & Steelhead Monitoring



Resident Fish: Sturgeon



Resident Fish: Blocked Area Mitigation



Predation



Photo from Ritchie Graves (NOAA)



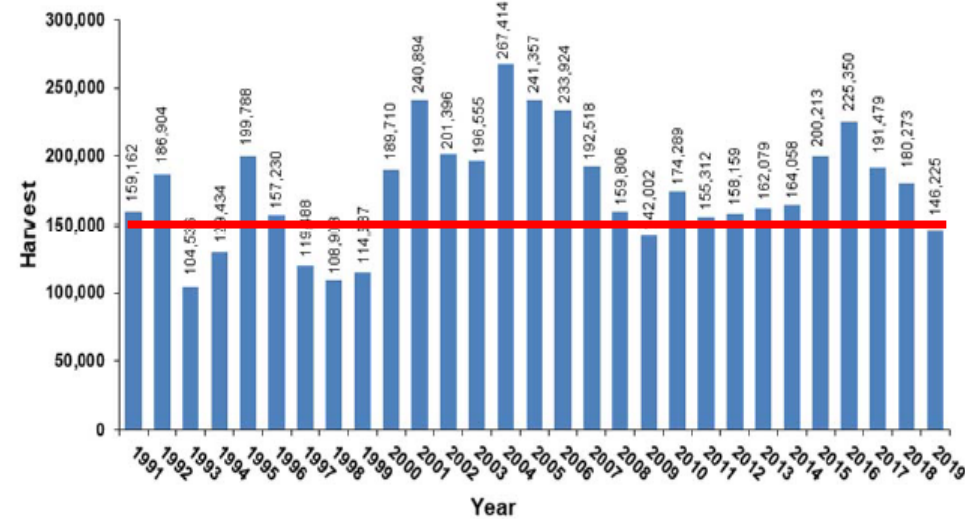
Photo Courtesy of Bird Research Northwest



Predation, cont'd.



NPSRF Annual Harvest by Year



Wildlife Areas as Mitigation for Inundation Impacts



Cross-cutting programs and new collaborative opportunities

- Yakima Basin Integrated Plan
- US v. Oregon parties initiative for hatchery infrastructure
- Upper Columbia River Reintroduction
- Collaborative paths forward on hydropower management



Yakima Basin Integrated Plan

- Water conservation
- Water marketing
- Groundwater recharge
- Re-operation of existing infrastructure
- New and expanded surface storage
- Habitat restoration and protection
- Fish passage at headwaters dams

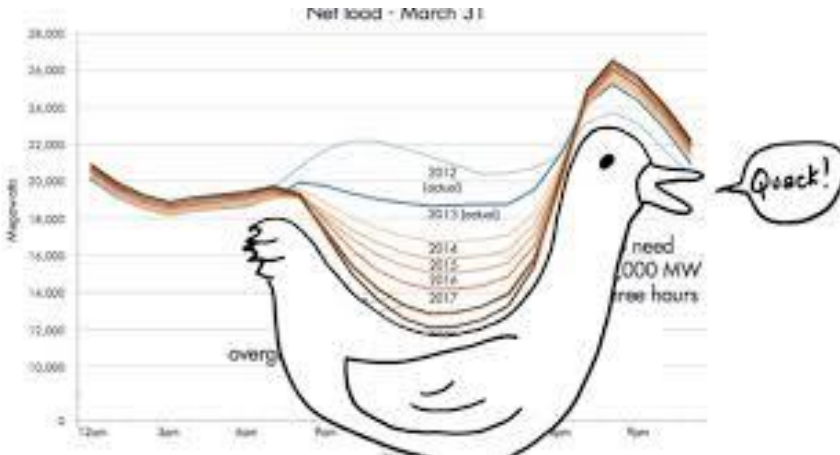


Upper Columbia Reintroduction



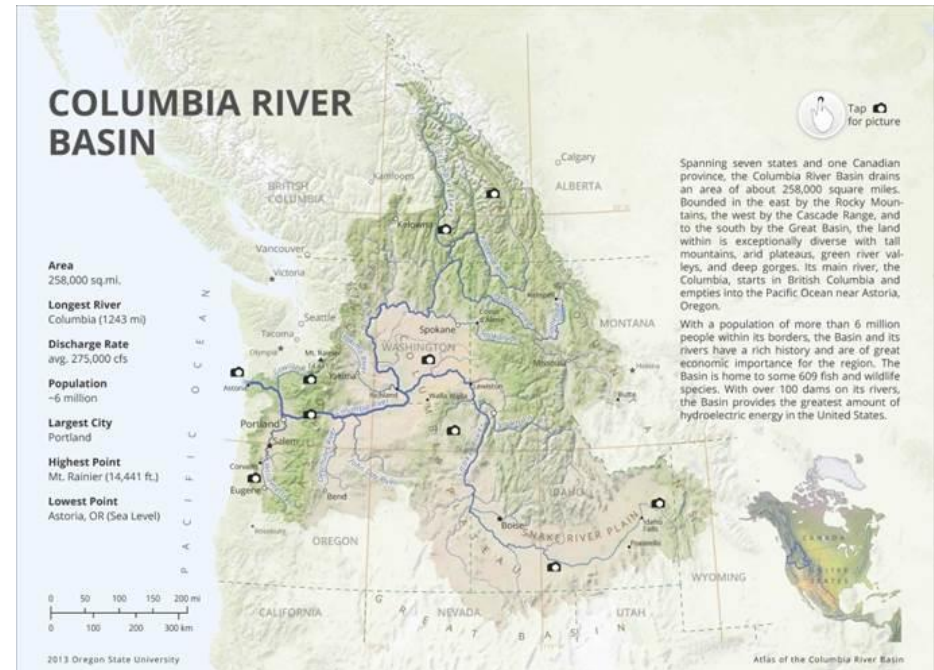
Flexible Spill Agreement

- Near-term win-win for hydro and fish
- Built new relationships for future conversations



Emerging opportunities

- Extended WA/WDFW MOU or Accord
- Four-state post-NEPA process
- Wildlife area settlement



QUESTIONS?

