

**Richard Devlin**  
Chair  
Oregon

**Ted Ferrioli**  
Oregon

**Guy Norman**  
Washington

**Patrick Oshie**  
Washington



# Northwest **Power** and **Conservation** Council

**Bo Downen**  
Vice Chair  
Montana

**Jennifer Anders**  
Montana

**Jim Yost**  
Idaho

**Jeffery C. Allen**  
Idaho

August 4, 2020

## **MEMORANDUM**

**TO: Power Committee Members**

**FROM: Daniel Hua and Massoud Jourabchi**

**SUBJECT: 2021 Plan Climate Scenario Load Forecasts**

### **BACKGROUND:**

Presenter: Daniel Hua and Massoud Jourabchi

Summary: Staff will update Power Committee Members on the new regional climate scenario load forecasts for the 2021 Power Plan. The new load forecasts were calculated from a new load methodology that was developed to correct problems observed in the previous set of climate loads presented at the Resource Adequacy Advisory Committee meeting in June 2020. These new loads have reasonable daily and monthly shapes and peak magnitudes when compared to recent historical observed loads.

Relevance: Load forecast is an essential building block of the Resource Plan.

**Climate Scenario Loads For  
the 2021 Power Plan**

*August 10, 2020*




---

**THE 2021  
NORTHWEST  
POWER PLAN**  
FOR A SECURE & AFFORDABLE  
ENERGY FUTURE

1

**Outline**

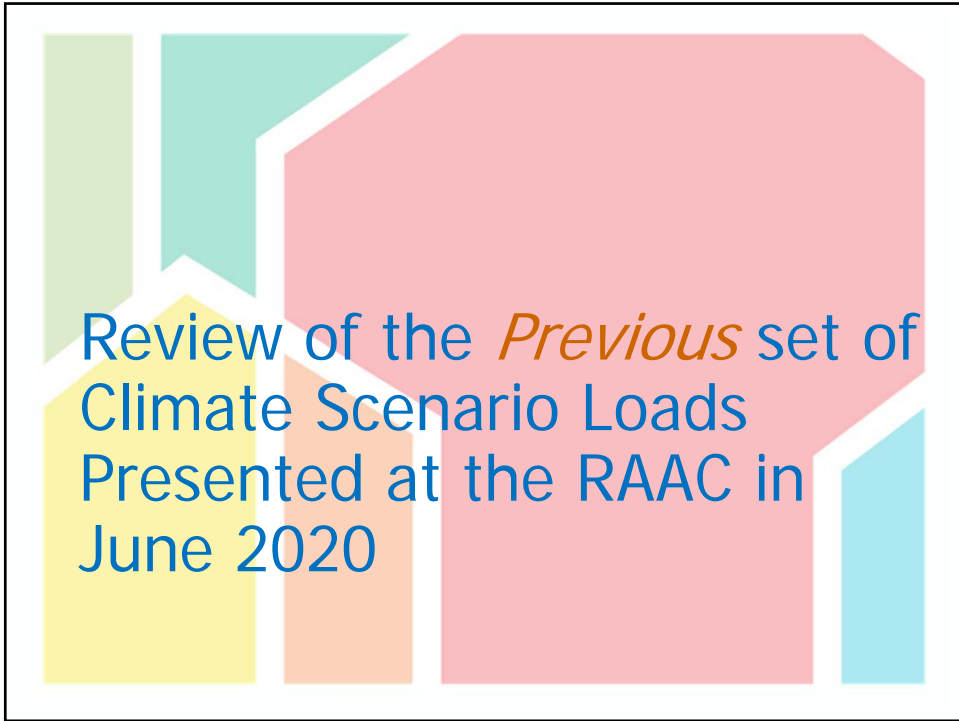
- **Review of the previous set of climate scenario loads presented during RAAC June 2020**
  - Comparison with historical loads
  - Comparison with RA-2024 loads
- **New load methodology**
- **New climate scenario loads**
  - Comparisons with historical loads



---

THE 2021  
NORTHWEST  
POWER PLAN


2



3

## The *Previous* Set of Climate Scenario Loads for June RAAC (I)

- The loads used in the preliminary resource adequacy studies for the 3 selected climate scenarios for the 2021 Power Plan:
  - *CanESM2\_BCSD*
  - *CCSM4\_BCSD*
  - *CNRM-CM5\_MACA*
- for the operating year 2024 were:
  - of medium economic forecast
  - had the effects of the 7th Plan EE targets and hourly shapes (with magnitude of 1,570 aMW)
  - and DSI



THE 2021 NORTHWEST POWER PLAN

4

## The *Previous* Set of Climate Scenario Loads for June RAAC (II)

- For comparison with other types of loads, for each of the 3 climate scenario, use the 10-year time-period: 2020 – 2029
- In aggregate, there are 30-years of loads from the 3 climate scenarios

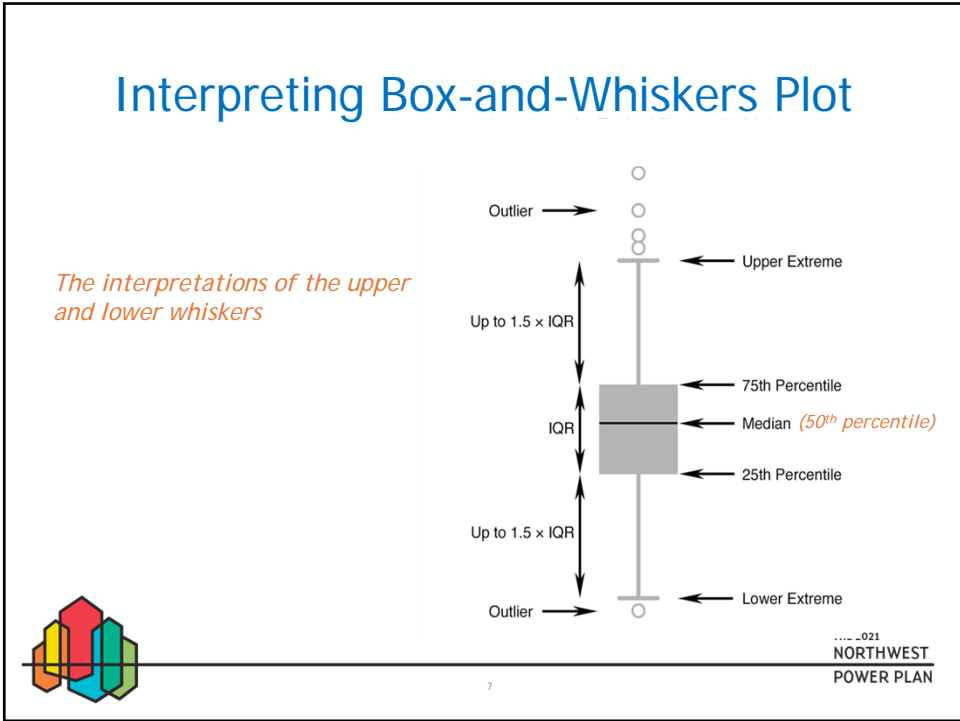


5

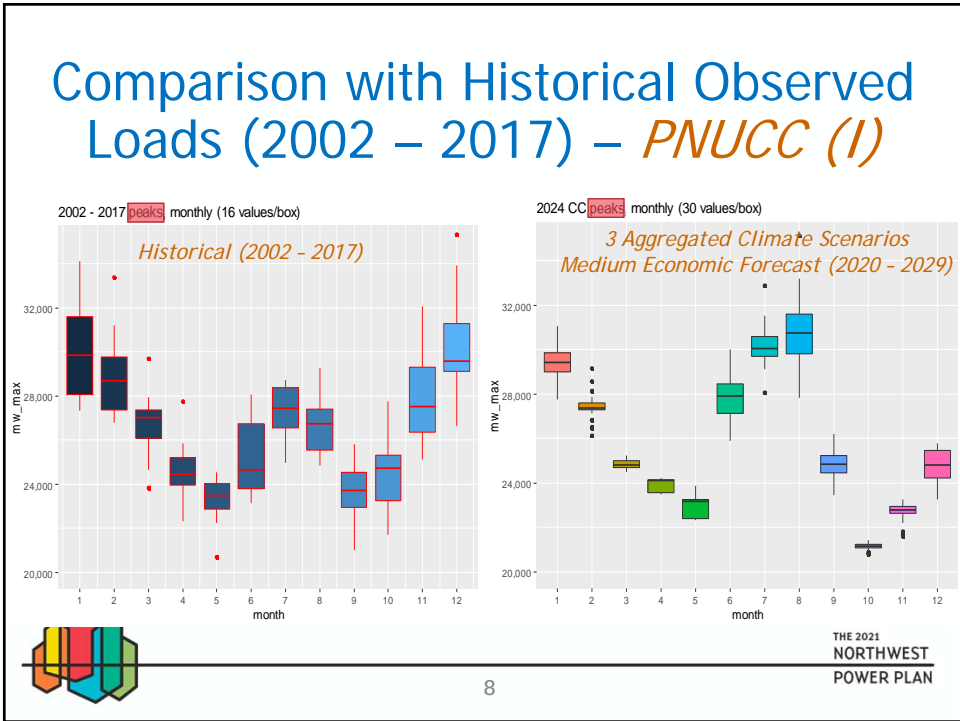
## Comparisons with Historical Observed Loads (2002 - 2017) - *PNUCC*



6

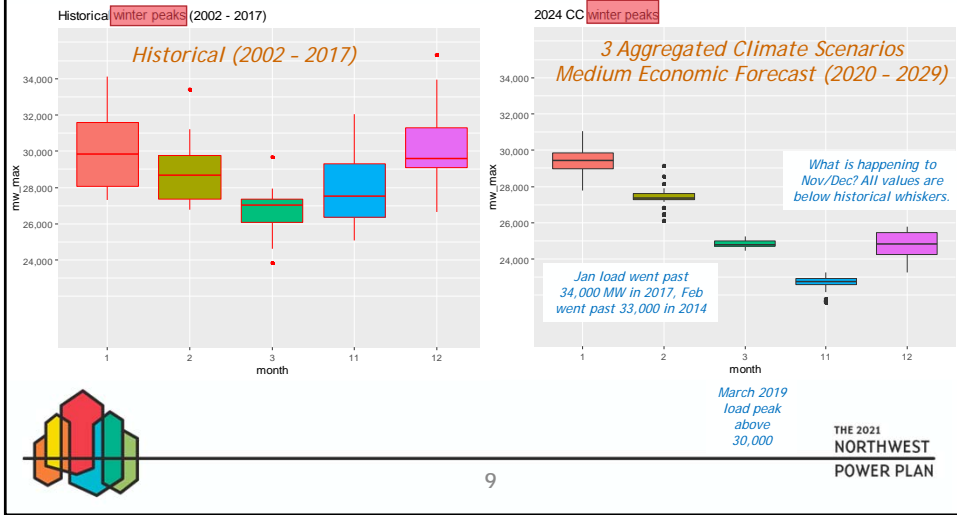


7



8

## Comparison with Historical Observed Loads (2002 – 2017) – PNUCC (II)




9

## Comparison with Historical Observed Loads (2002 – 2017) – PNUCC (III)



10

## Comparisons with *Medium* Economic Forecast For the RA-2024 Loads *(with 1998 - 2017 Temperatures)*



11

THE 2021  
NORTHWEST  
POWER PLAN


11

## Regional Temperature

- The regional temperature used in load forecast modeling,
 
$$T_{region} = a * T_{Seattle} + b * T_{Portland} + c * T_{Spokane} + d * T_{Boise} + constant$$

is a weighted sum of the temperatures of four cities: *Seattle, Portland, Spokane and Boise*

- the weights, *a, b, c, d*, and *constant* vary by month
- For example, for Jan to Apr,
  - *a* = 0.49, *b* = 0.26, *c* = 0.22, *d* = 0.06, constant = -2.54



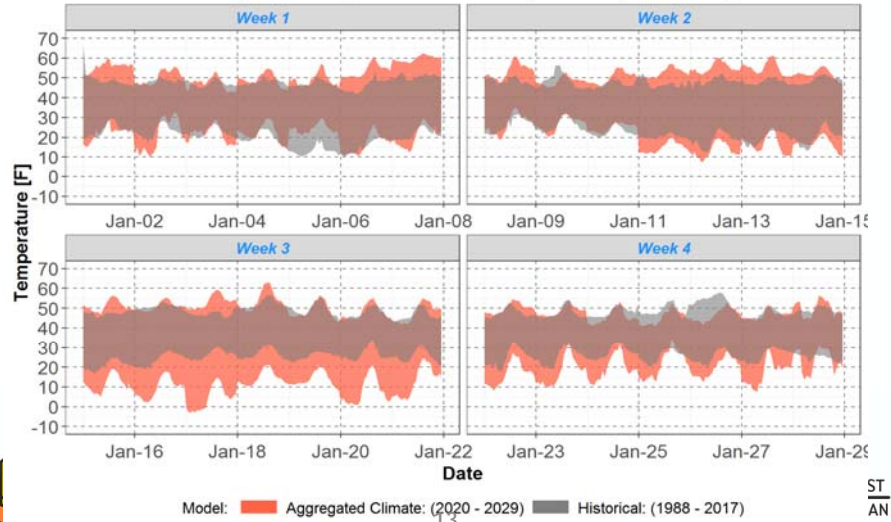
12

THE 2021  
NORTHWEST  
POWER PLAN

12

## Climate Scenario (2020 – 2029) and Historical *Jan* Temperatures (1988 – 2017)

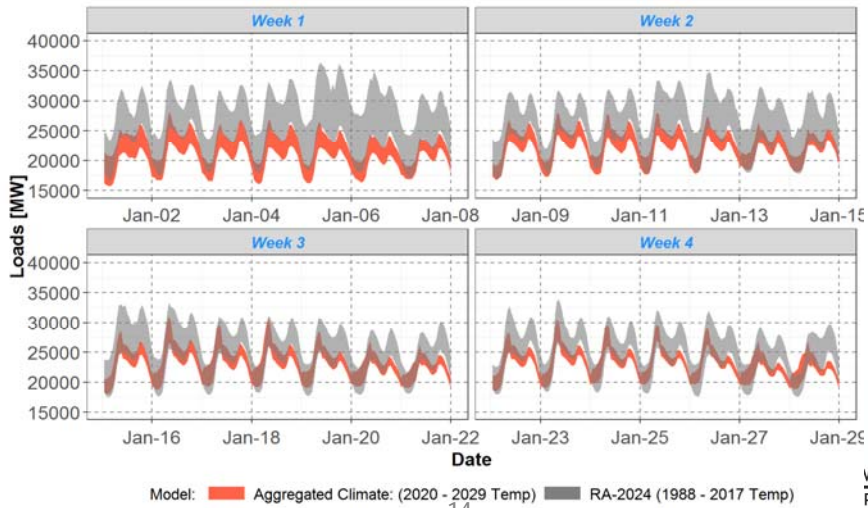
Climate Scenario (2020 - 2029) and Historical Temperatures (1988 - 2017) for Month 1



13

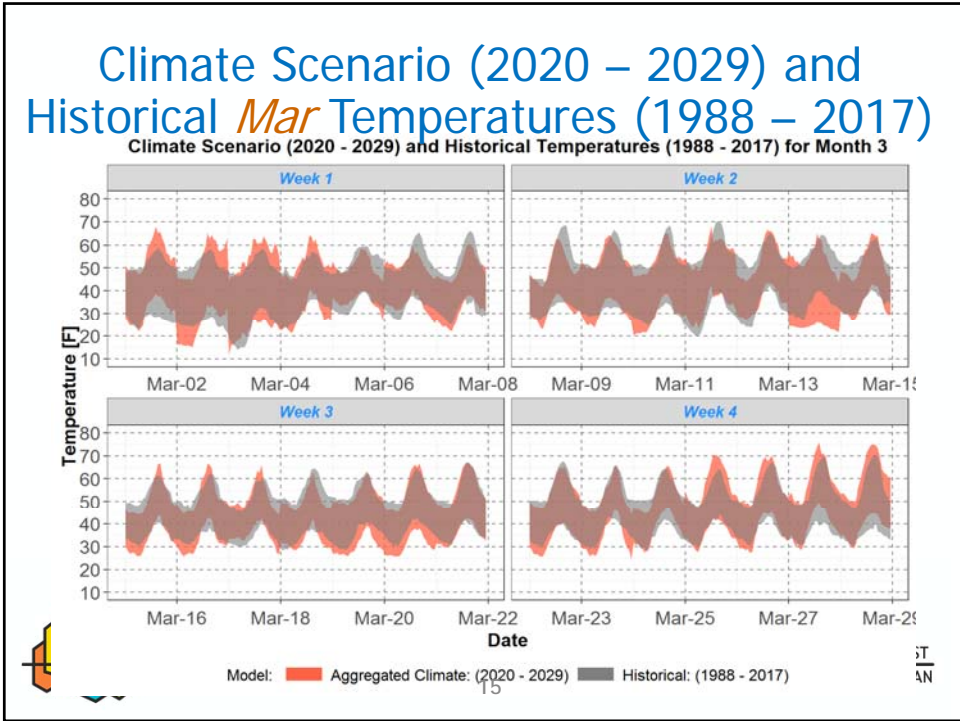
## Comparison with *Jan* RA-2024 Loads

3 Aggregated Climate Scenario (2020 - 2029 Temp) and RA-2024 (1988 - 2017 Temp) Loads for Month 1

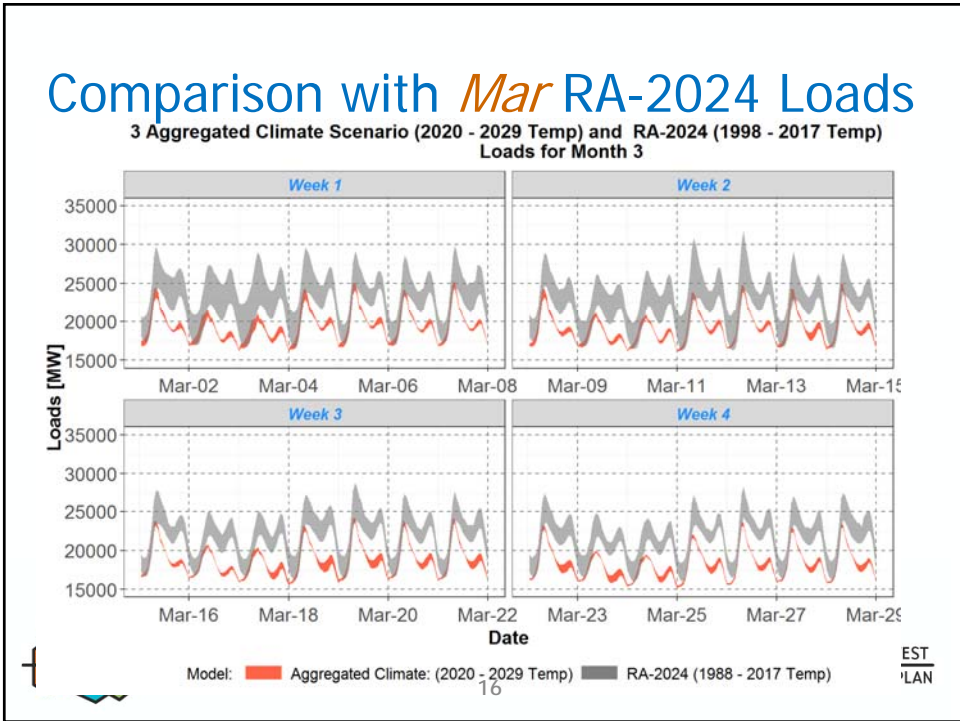


14





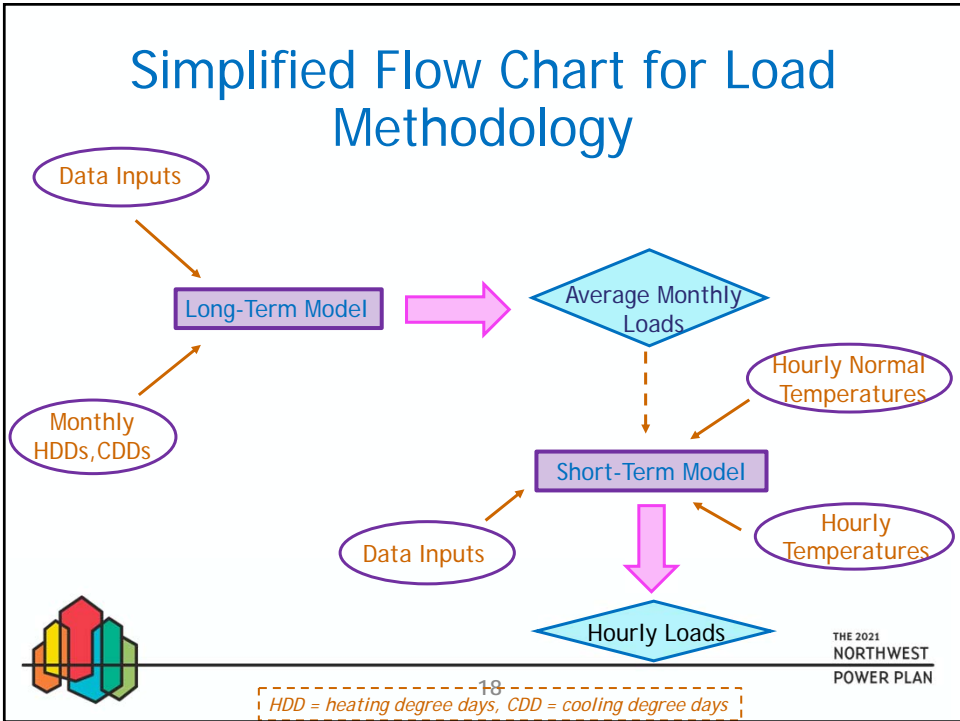
15



16

# New Hourly Load Forecast Methodology

17



18

## Changes in Short-Term Model

- Key economic driver:

**Previous Methodology**  
*monthly averaged loads from long-term model*

**New Methodology**  
*future regional employment for 2020 – 2050\**

- Normal temperatures

**Previous Methodology**  
*climate scenario temperatures 2020 - 2050*

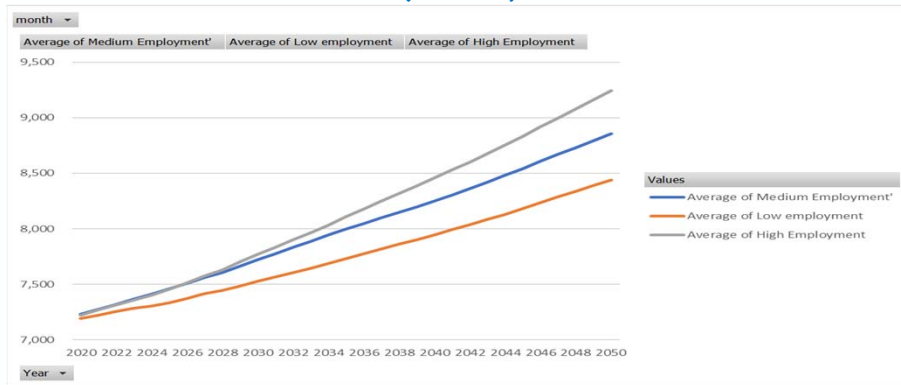
**New Methodology**  
*historical observed temperatures 1948 - 2017*



<sup>19</sup>  
 \* Source for employment projections: Global Insight 2018

THE 2021  
 NORTHWEST  
 POWER PLAN

## Average Annual Regional Employment\* Forecast (1000s)

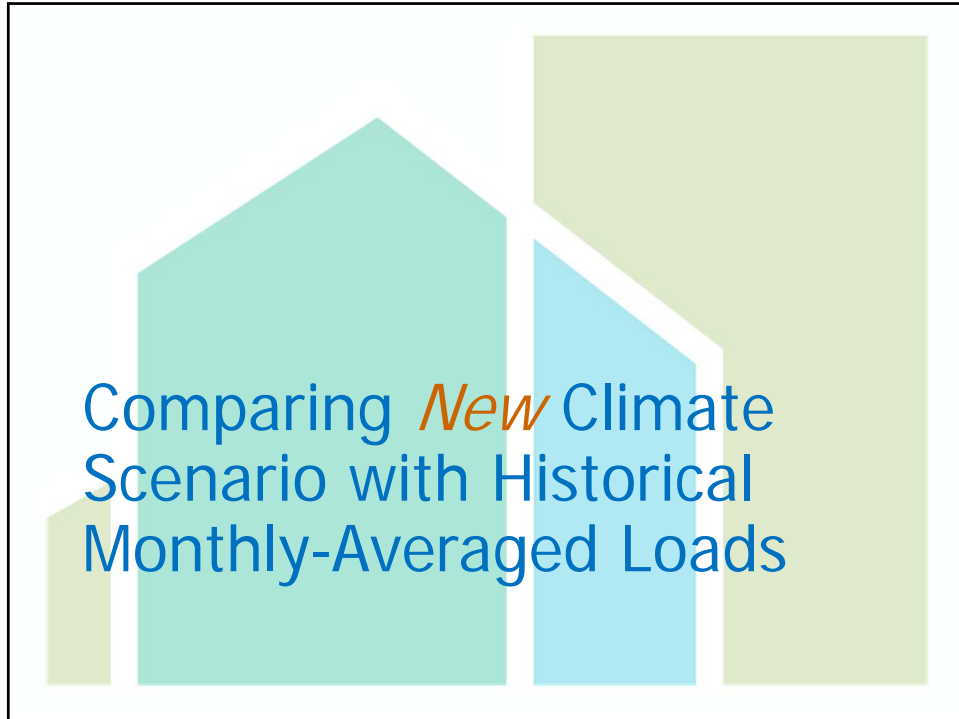


\*Regional employment was used as economic driver for STM across all CC scenarios. LTM uses a variety of economic drivers, such as number of residences, commercial square footage, industrial output, population.

Source for employment projections: Global Insight 2018  
 subject to change/ Draft to final/ Covid-19 impact.



THE 2021  
 NORTHWEST  
 POWER PLAN



21

## *New* Climate Scenario Monthly Averaged Weather-Normalized Loads

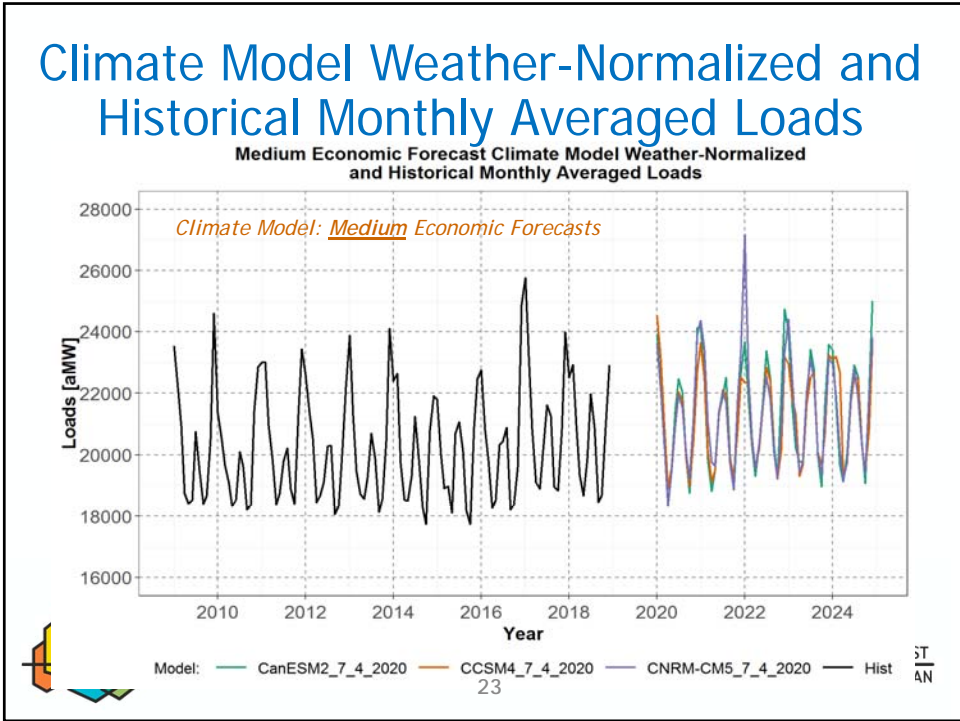
- As a check on *continuity* near the year 2020,
  - Compare the 3 climate scenario monthly-averaged loads (from the long term model) with historical monthly-averaged loads
  - For the climate scenario loads (*weather-normalized*), use the just the first few forecast years: 2020 - 2024
  - For historical loads, use the 10-year historical time period: 2009 – 2018
  - use historical *net-of DSI* loads



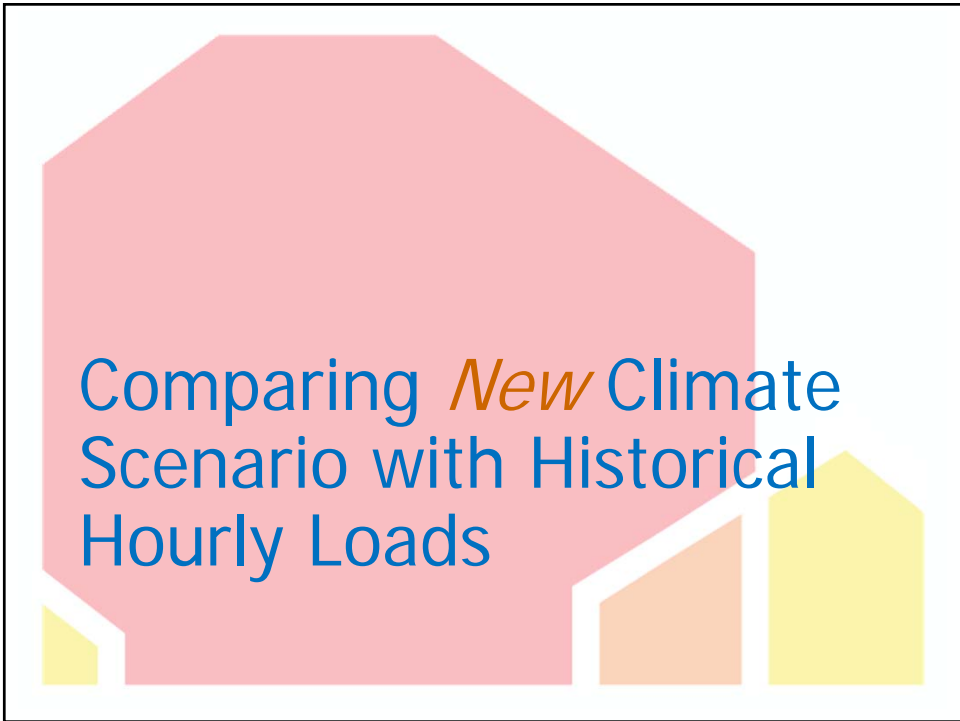
22

THE 2021  
NORTHWEST  
POWER PLAN

22



23



24

## New Climate Scenario Loads

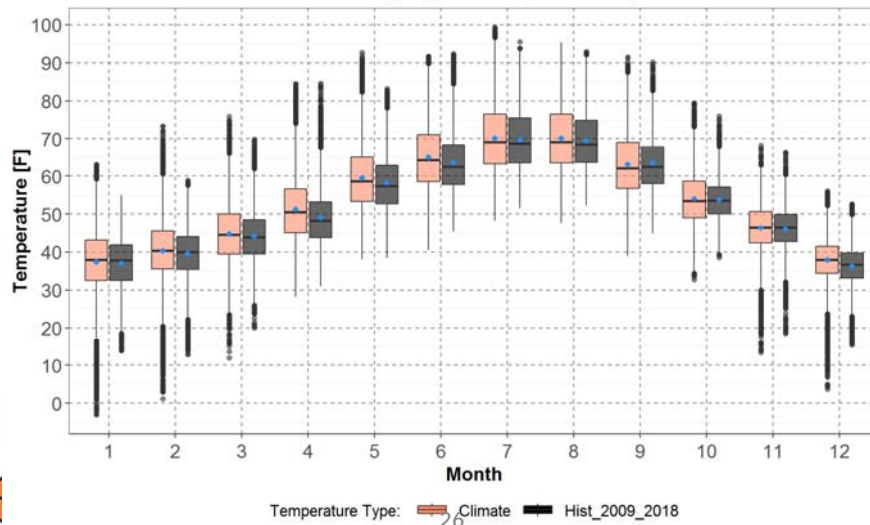
- To validate the new climate hourly loads, use the operating year **2024** and compare with historical hourly loads
  - Compare climate scenario loads (*medium economic forecast*) with historical observed loads
  - For the climate scenarios, use temperatures for the 10-year time-period: 2020 – 2029
  - For simplicity, use *frozen-efficiency* and *net-of DSI* loads for climate scenarios
  - For historical loads, take the 10-year time period from 2009 to 2018 to match the 10-year climate scenario time-period
- And use historical observed *net-of DSI* loads

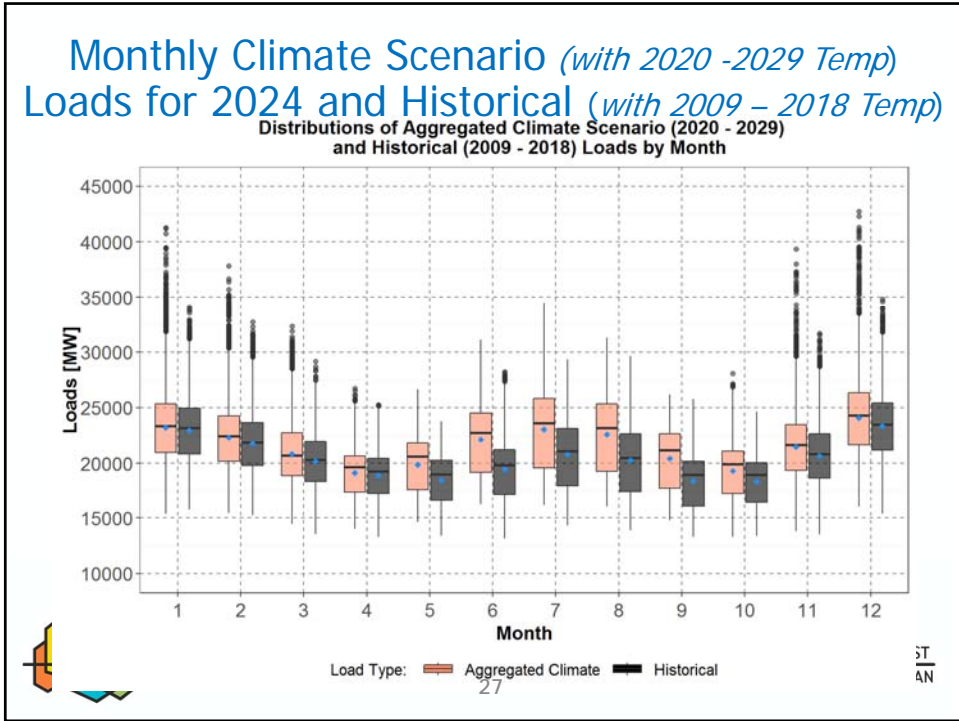


THE 2021  
NORTHWEST  
POWER PLAN

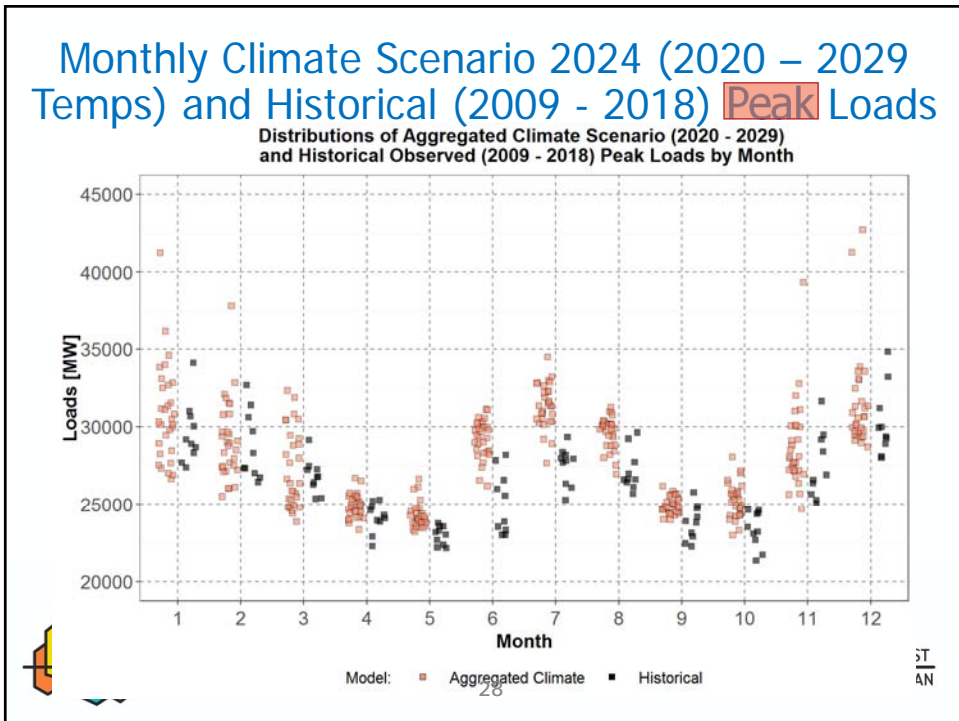
## Monthly Climate Scenario (2020 -2029) and Historical (2009 – 2018) Temperatures

Distributions of Aggregated Climate Scenario (2020 - 2029) and Historical (2009 - 2018) Hourly Regional Temperatures by Month

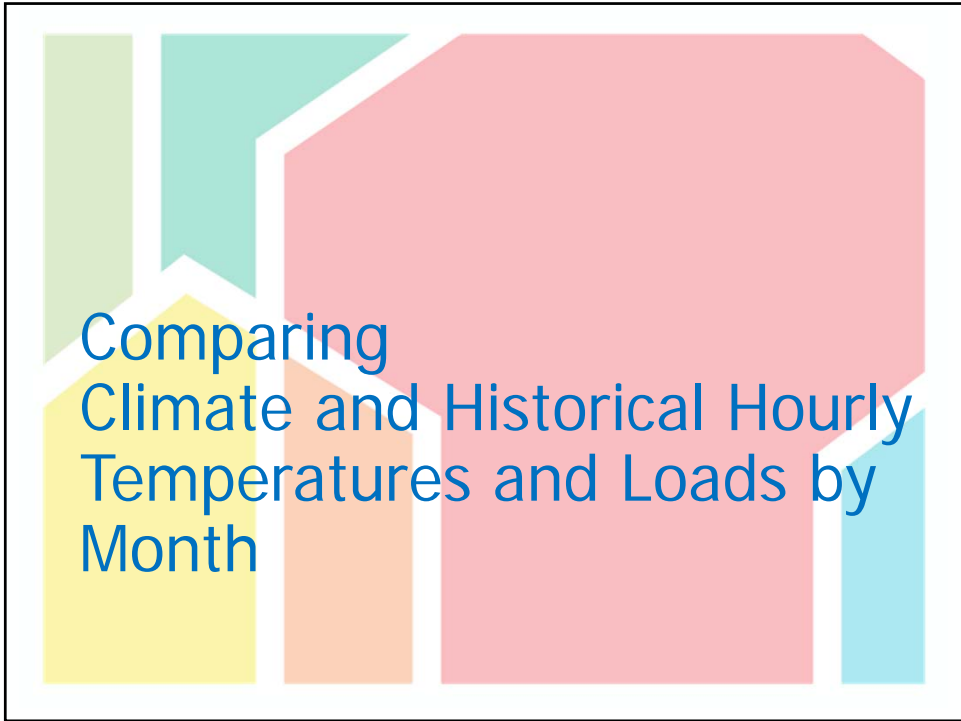




27



28




29

## Climate and Historical Temperatures

- *Maximum* and *minimum hourly* regional temperatures for the aggregated climate scenarios
  - *CanESM2\_BCSD*
  - *CCSM4\_BCSD*
  - *CNRM-CM5\_MACA*

for 2020 – 2029 are plotted for each month

- *Maximum* and *minimum hourly* regional temperatures for 2009 – 2018 are plotted for each month
- Plot maximum and minimum hourly temperatures as envelopes



THE 2021  
NORTHWEST  
POWER PLAN

30

30



## Climate and Historical Observed Loads

- Maximum and minimum hourly regional loads for 2024 (medium economic forecast, frozen efficiency, net of DSI) for the aggregated climate scenarios:

- CanESM2\_BCSD
- CCSM4\_BCSD
- CNRM-CM5\_MACA

with 2020 – 2029 temperatures are plotted for each month

- Maximum and minimum hourly historical observed loads (net of DSI) for 2009 – 2018 are plotted for each month

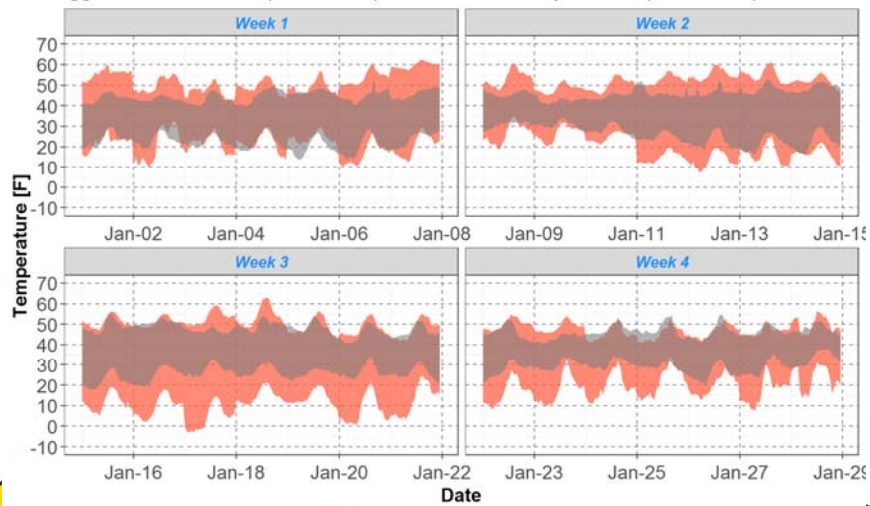


- Plot maximum and minimum loads as envelopes

THE 2021  
NORTHWEST  
POWER PLAN

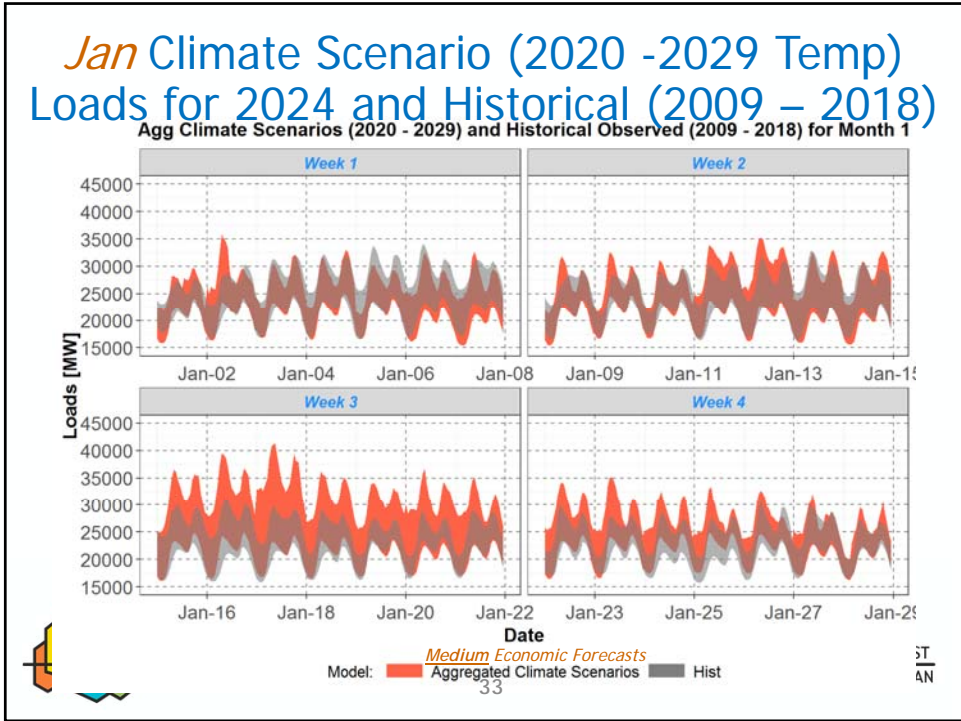
## Jan Climate Scenario 2020 - 2029 and Historical 2009 – 2018 Temperatures

Agg Climate Scenarios (2020 - 2029) and Historical Temperatures (2009 - 2018) for Month 1

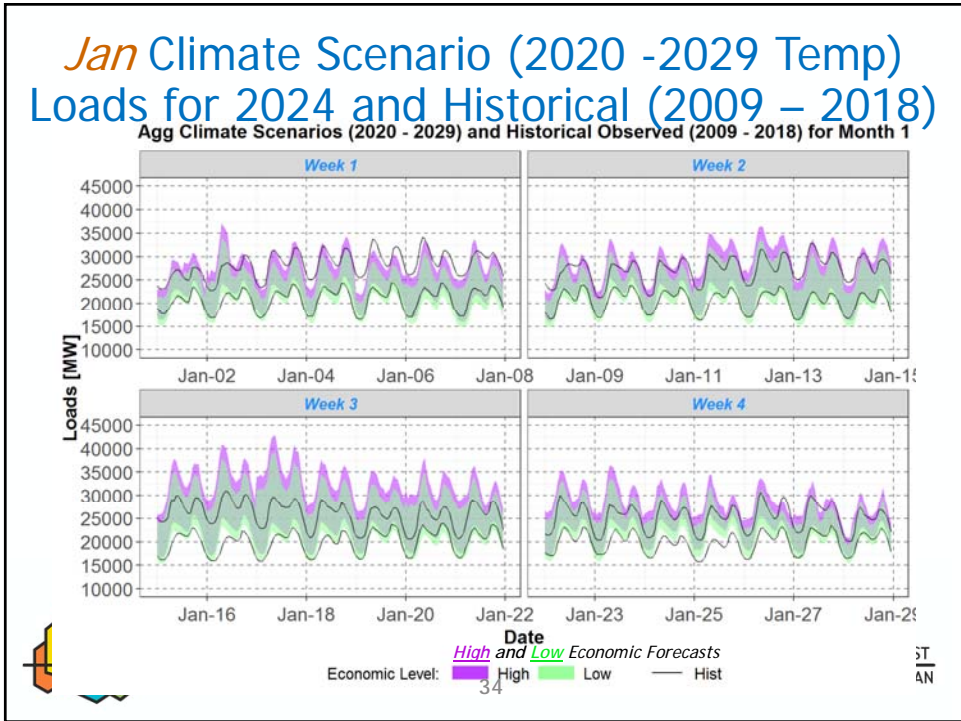


Model: Aggregated Climate Scenarios Hist

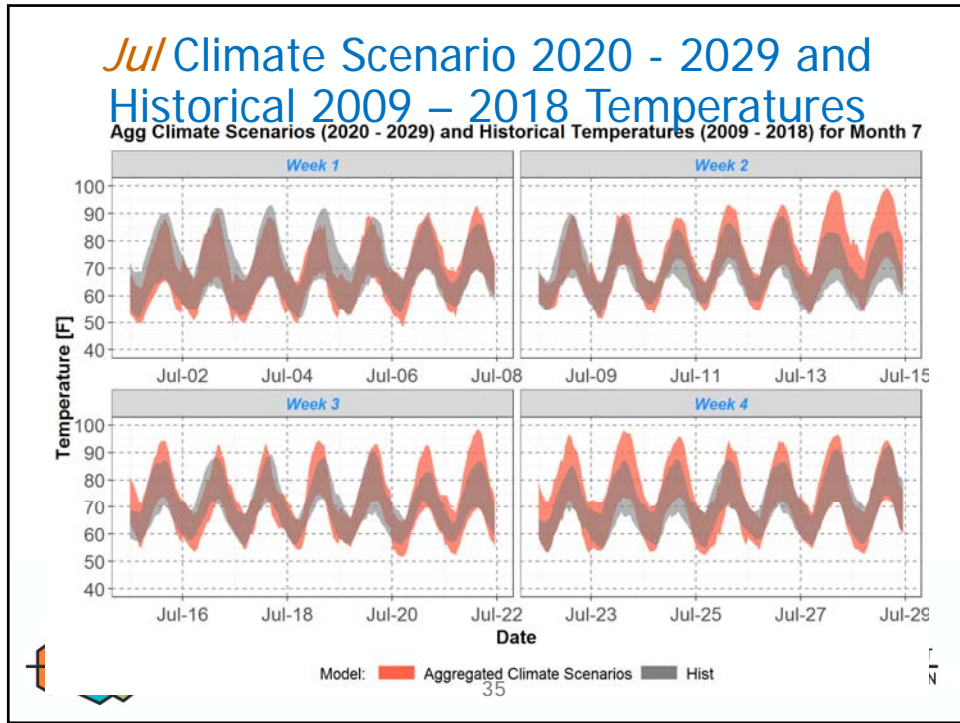
THE  
NORTHWEST  
POWER PLAN



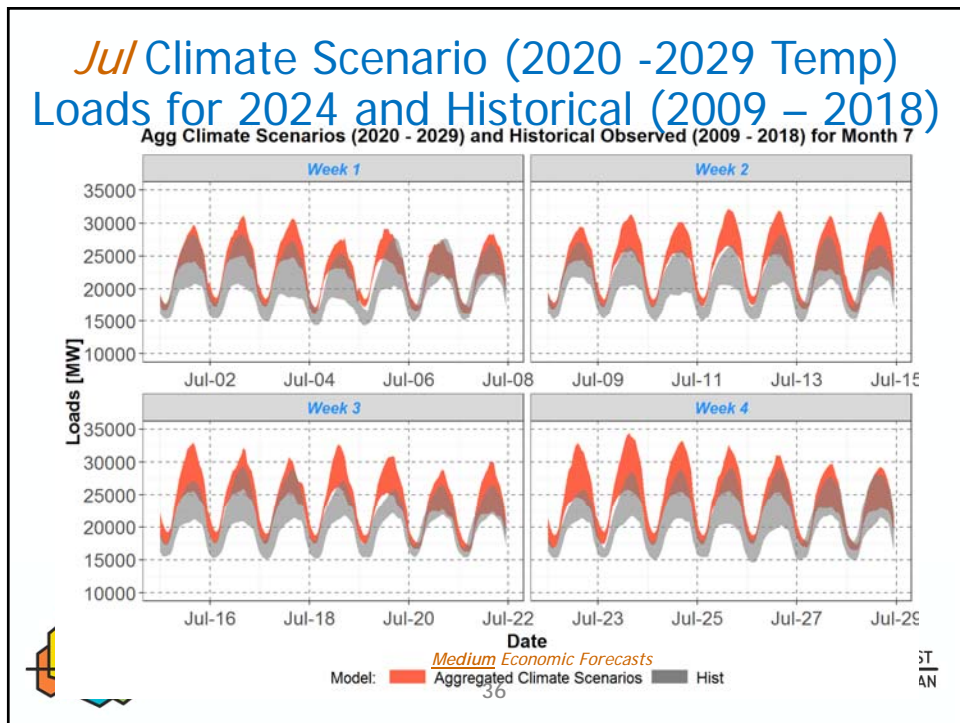
33



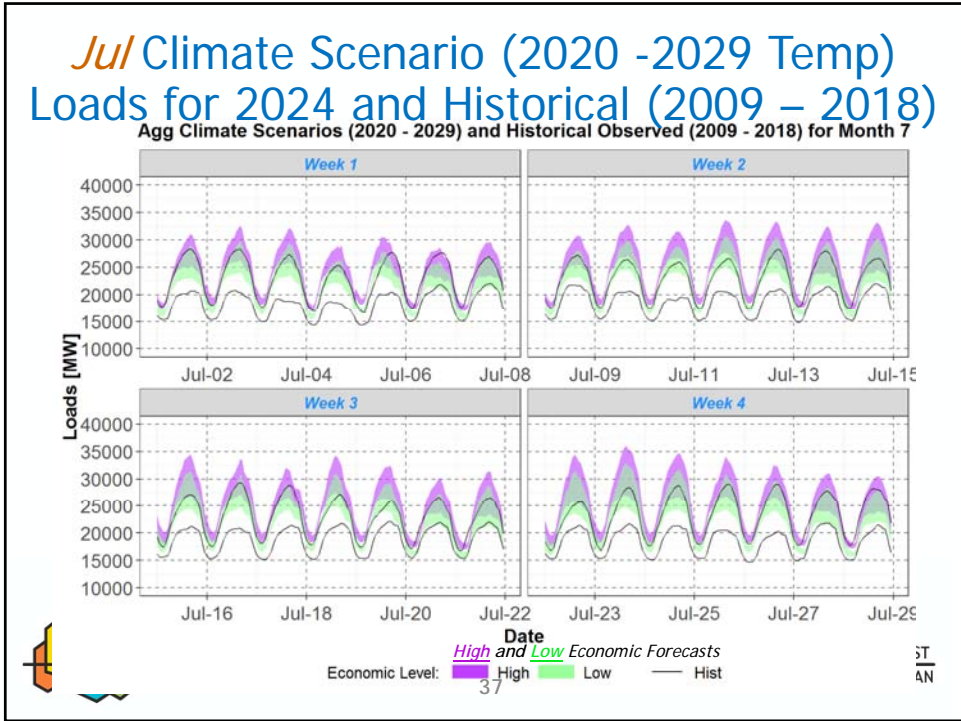
34



35



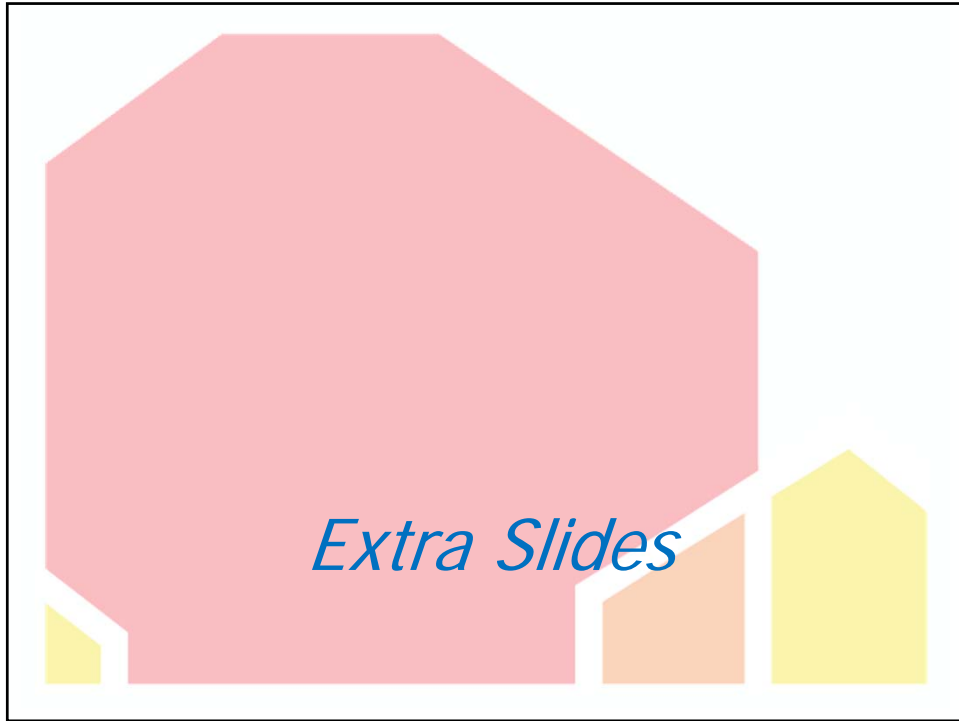
36



37



38



39

## Methodology: Weather Normalized Loads

- Using 1995-2018 *historical observed* temperature and load data, we estimate the following equation.

$$\log(L) = \alpha + \beta S + \gamma C + \delta \text{Log}(Emp) + \theta I + u + \omega \log(\Delta T)$$

where:

$L$ : is the log of net hourly load for electricity.

$S, C$ : are a set of Fourier sine and cosine series capturing seasonal and trends.

$\Delta T$ : Deviations from “normal/mean” temperatures.

$Emp$ : is seasonally adjusted monthly employment (history).

$I$ : are the indicator or dummy variables,

$u$ : is the error term of the regression model

- Parsing Loads: Weather Normalized and Temp. Sensitivity Multiplier

We take Coefficients from above equation to estimate WN and TSM

$$\text{WN load} = \alpha + \beta S + \gamma C + \delta \text{Log}(Emp) + \theta I + u$$

where  $Emp$  is forecast for 2020-2049 period. This provides a forecast void of temperature deviations from Normal, but it includes impact of normal temps.



40

## New Methodology: Temperature Sensitivity Multipliers

- To forecast loads that are sensitive to temperature variations. We need to incorporate coefficients from temperature deviations in the load equation. using the coefficient from

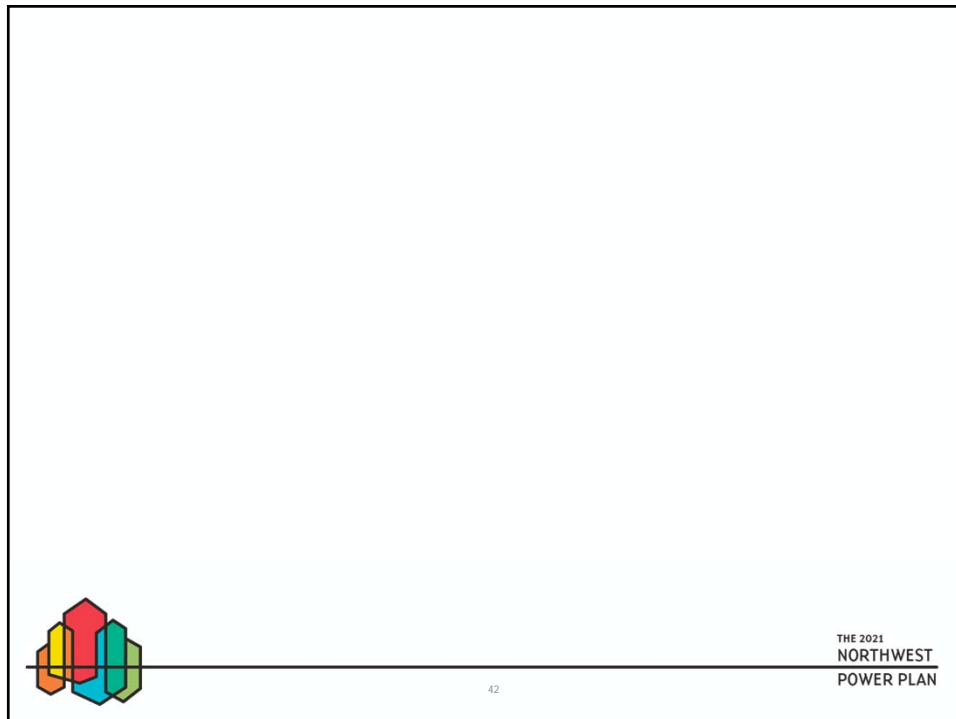
$$TSM = \omega \log(\Delta T) \text{ where:}$$

- $\omega$  is set of coefficients showing relationship between hourly load and  $\Delta t$ .
- $\Delta T$  is (Climate Change temperature forecast from CC models) minus (Deviation from Normal historical temperatures).
- Note that in the past RA analysis,  $\Delta T$  had come from historic observed temperatures. For example for RA-2024, normal temperature calculated from 1948 – 2017, and deviations from normal temperature calculated for 1948 – 2017 hourly temperatures
- However for 2021 Plan/future RA, we are using future temperatures from CC models to develop TSM. This shift to future temps. is a new methodology and has implication for future RA analysis. It increases uncertainty of the load forecast.



▪ Normal temperature calculated from historical observed 1948 – 2018 temperatures. But deviations from normal temperature calculated from climate temperatures from 2020 - 2049

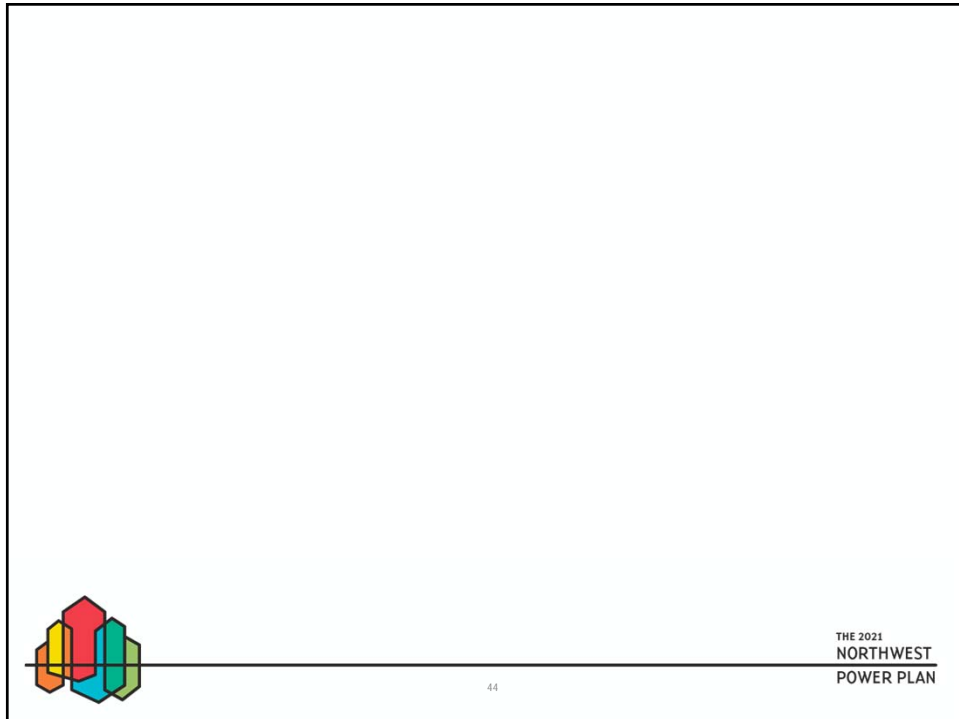
41



42

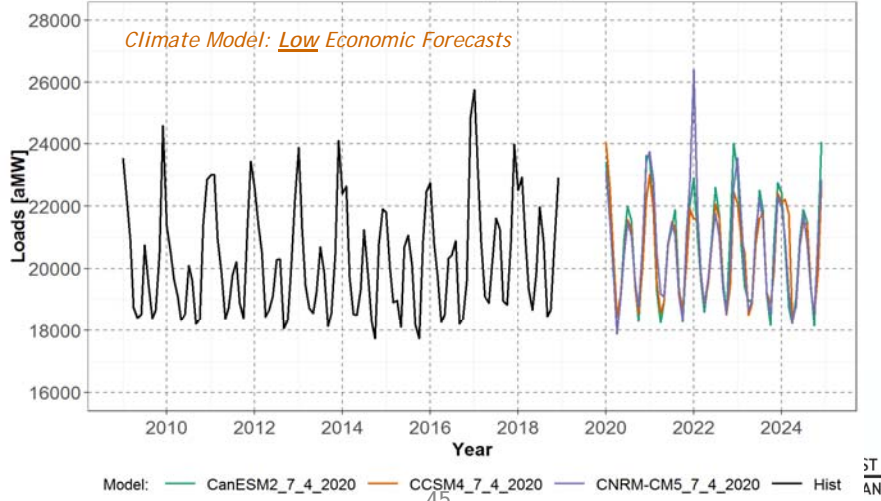
## CCSM4 Loads for 2024 for February and March Show a Jump due to jump in Heating Degree Days

	2021	2022	2023	2024
Oregon HDD January	805	591	662	659
Oregon HDD February	681	616	536	715
Oregon HDD March	533	525	652	823
Washington HDD January	846	611	677	689
Washington HDD February	718	659	569	752
Washington HDD March	574	582	689	882



# Climate Model Weather-Normalized and Historical Monthly Averaged Loads (A)

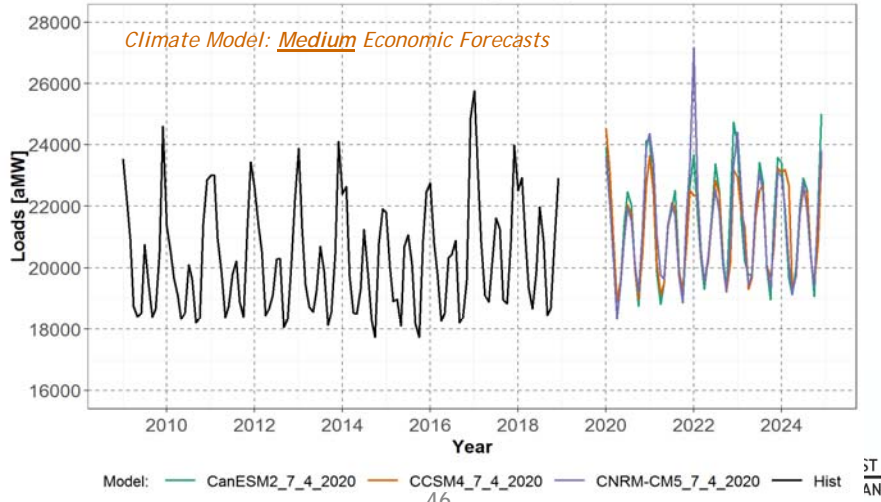
Low Economic Forecast Climate Model Weather-Normalized and Historical Monthly Averaged Loads



45

# Climate Model Weather-Normalized and Historical Monthly Averaged Loads (B)

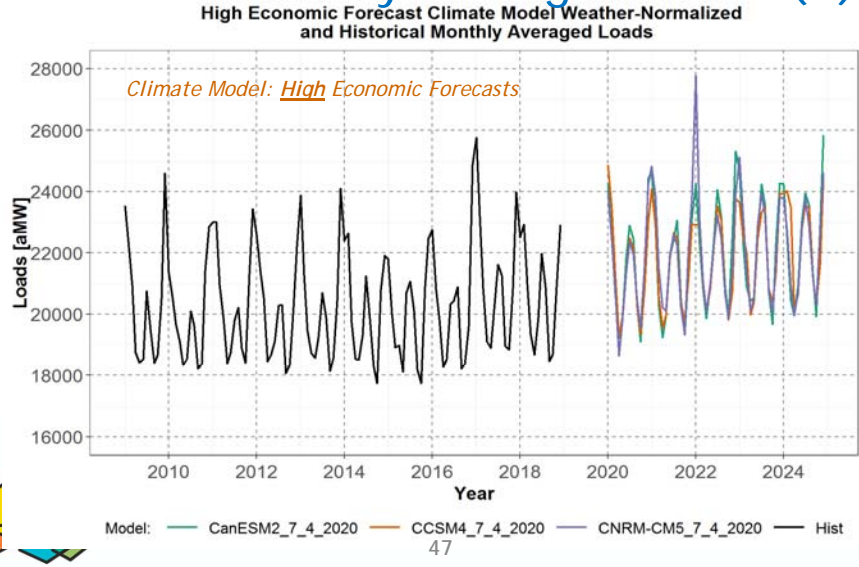
Medium Economic Forecast Climate Model Weather-Normalized and Historical Monthly Averaged Loads



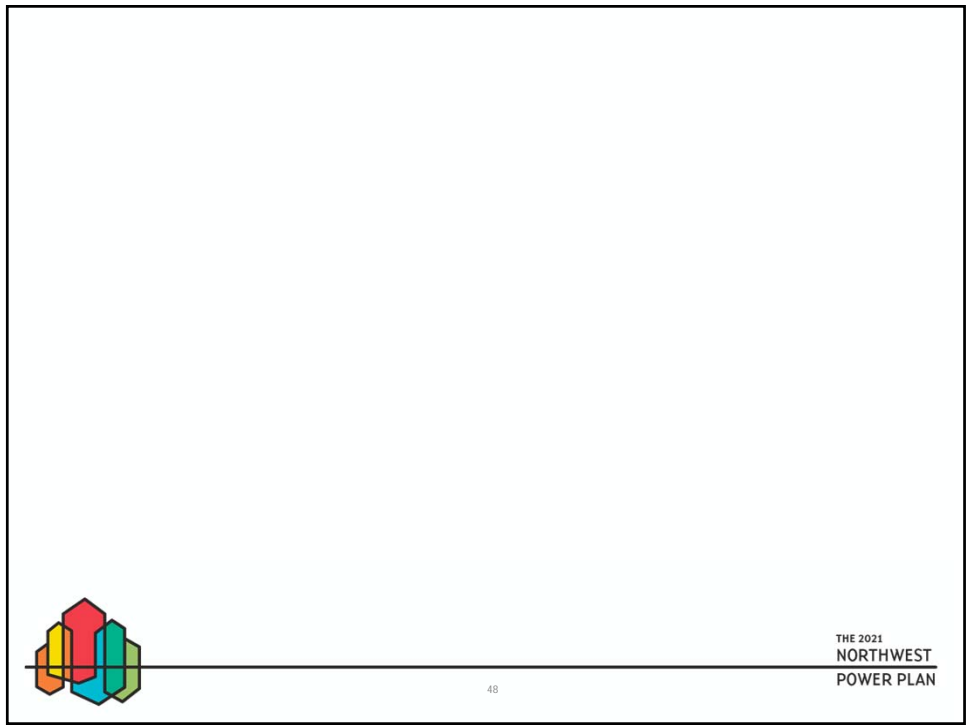
46



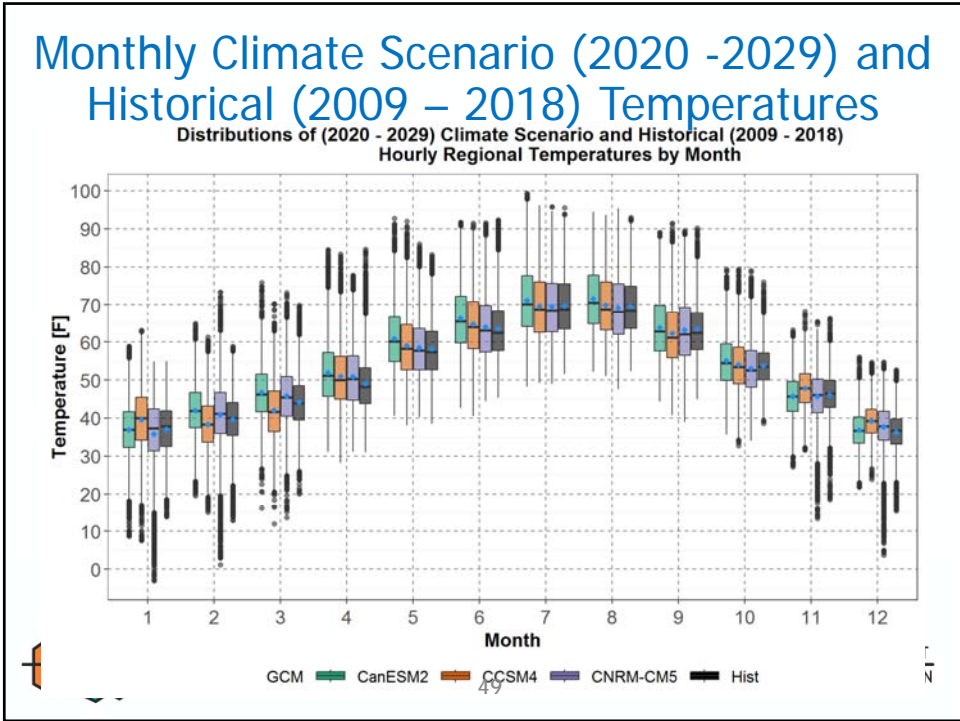
# Climate Model Weather-Normalized and Historical Monthly Averaged Loads (C)



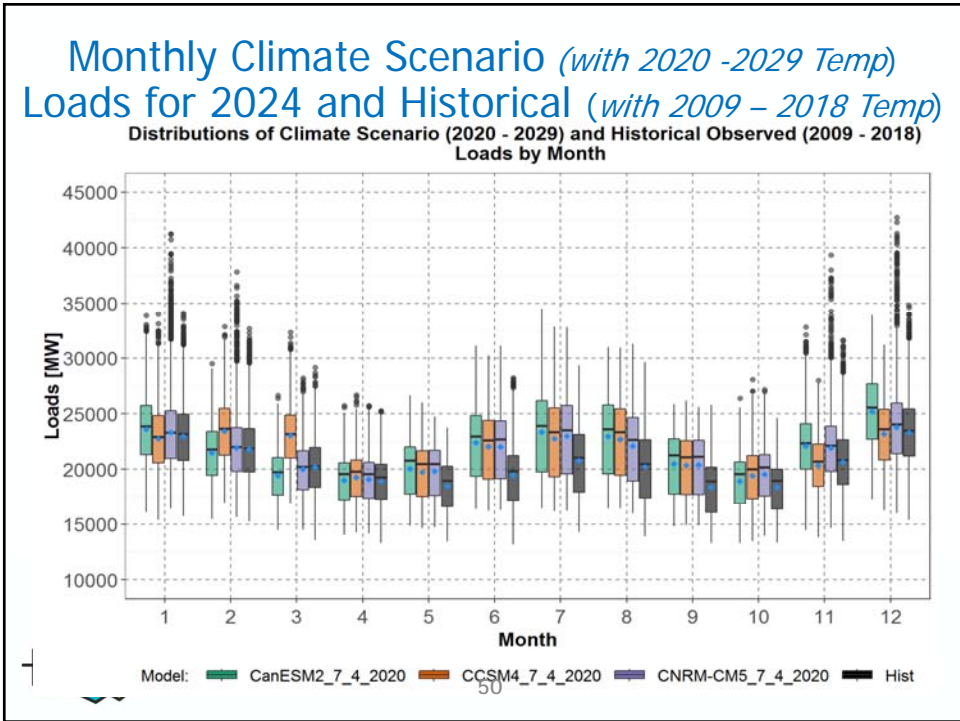
47



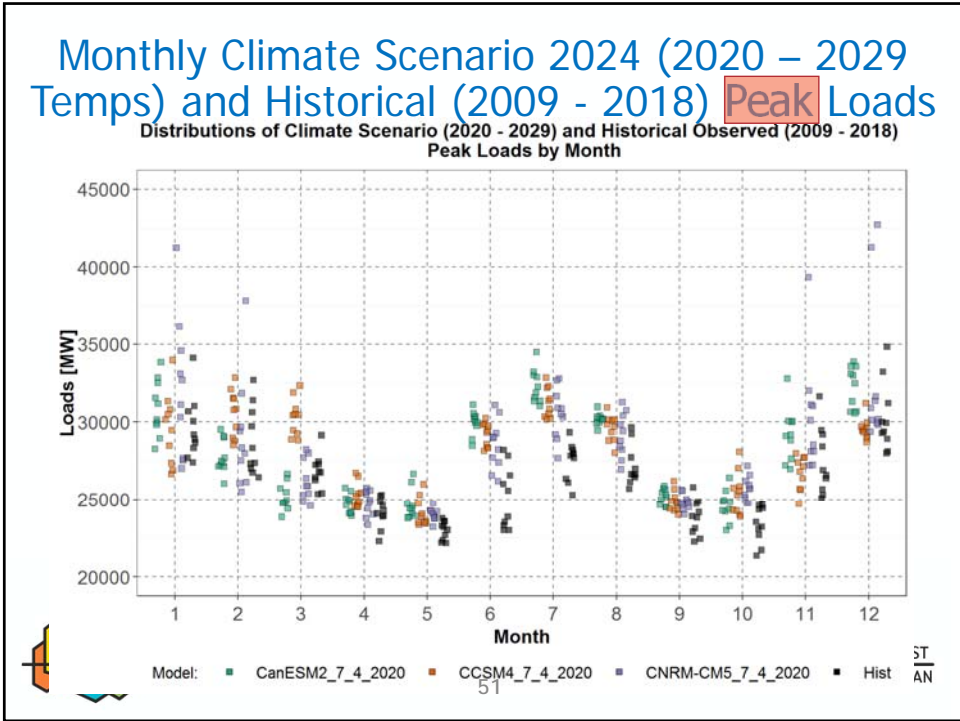
48



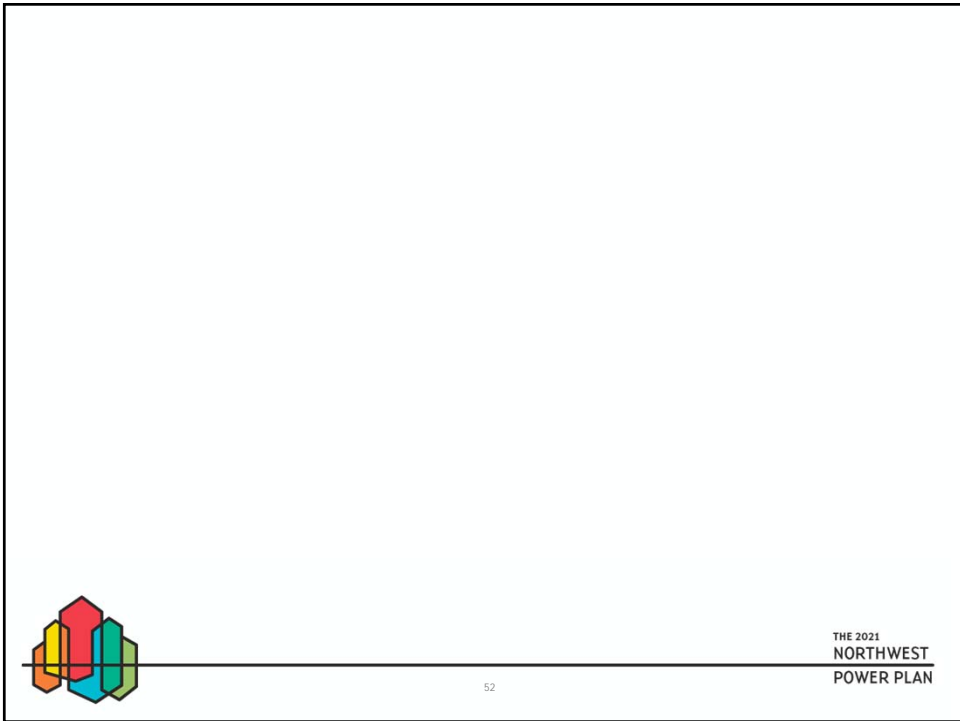
49



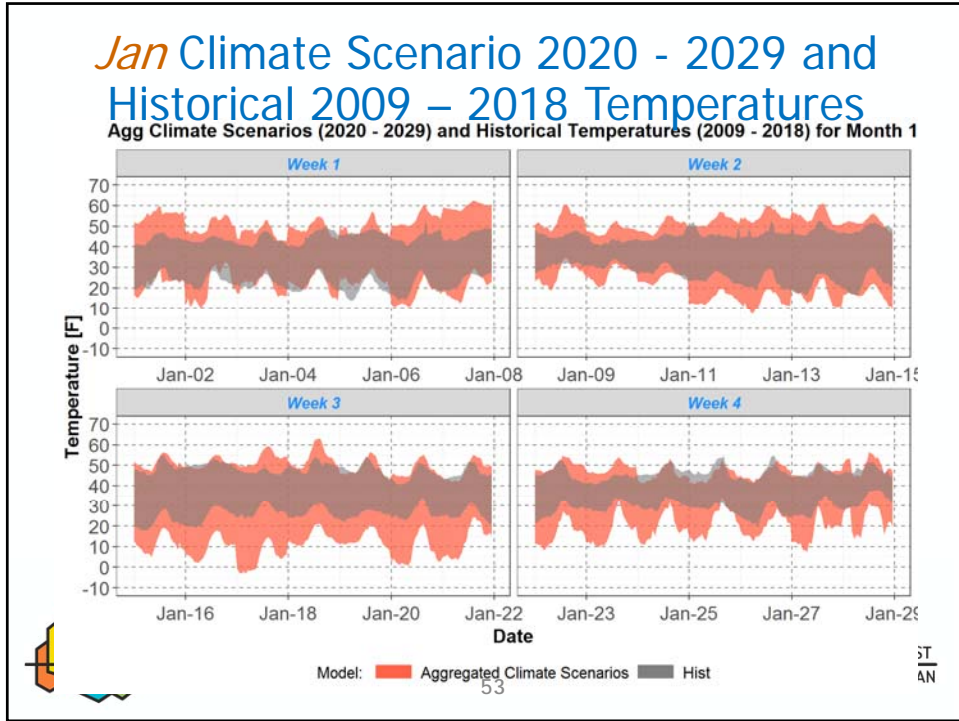
50



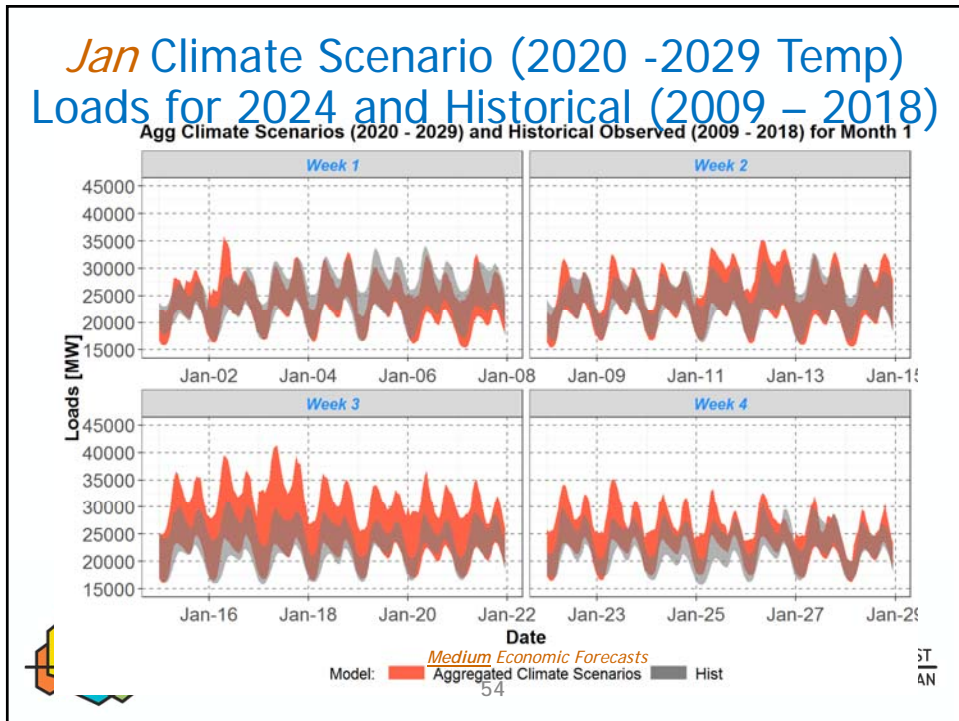
51



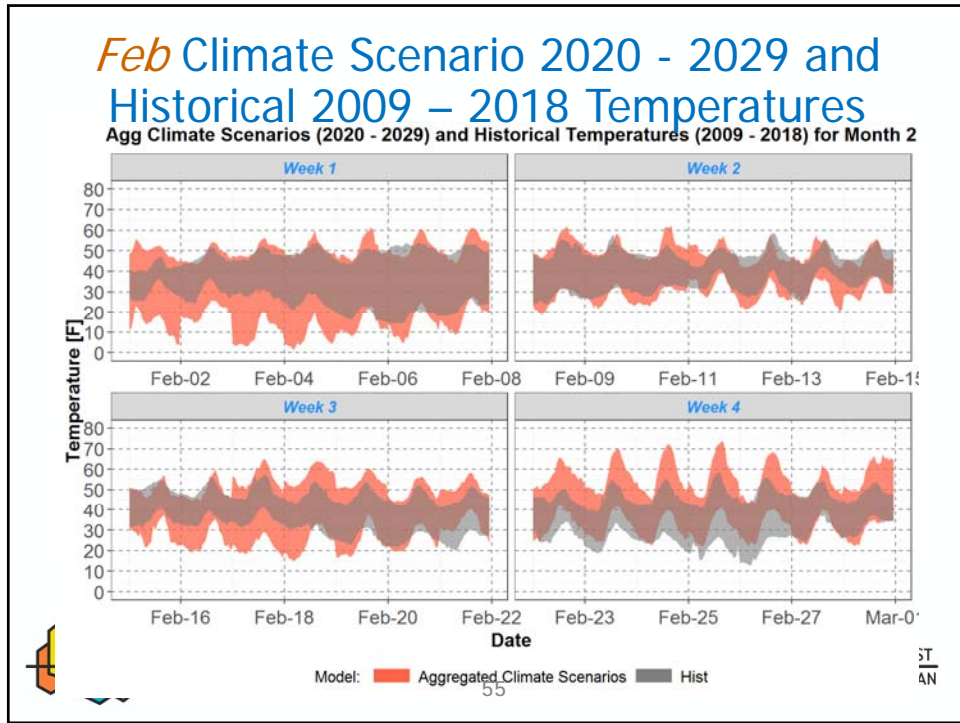
52



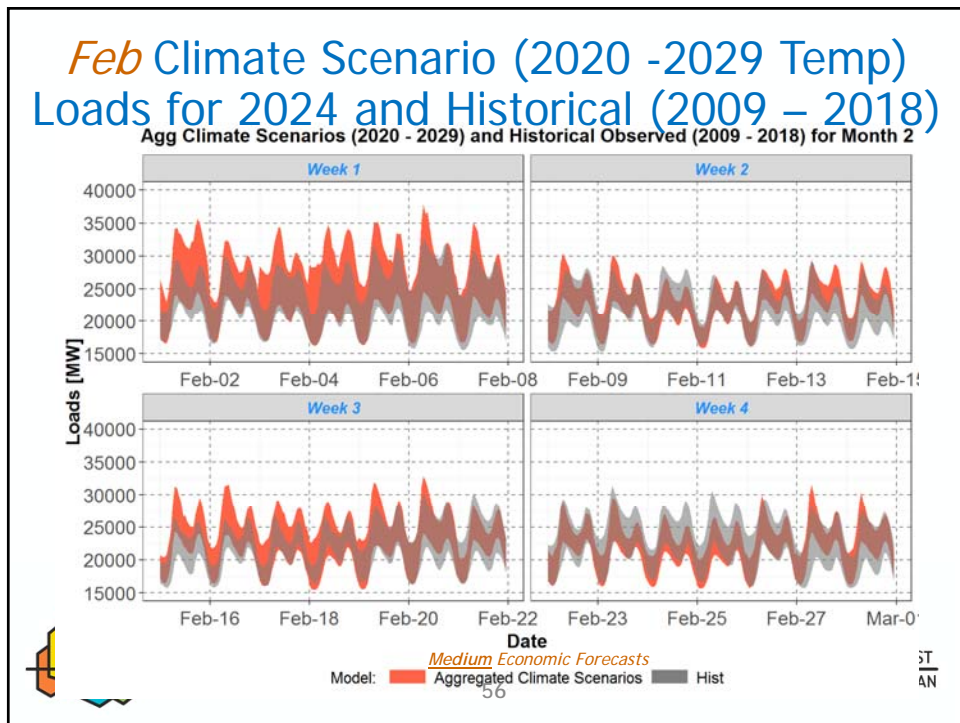
53



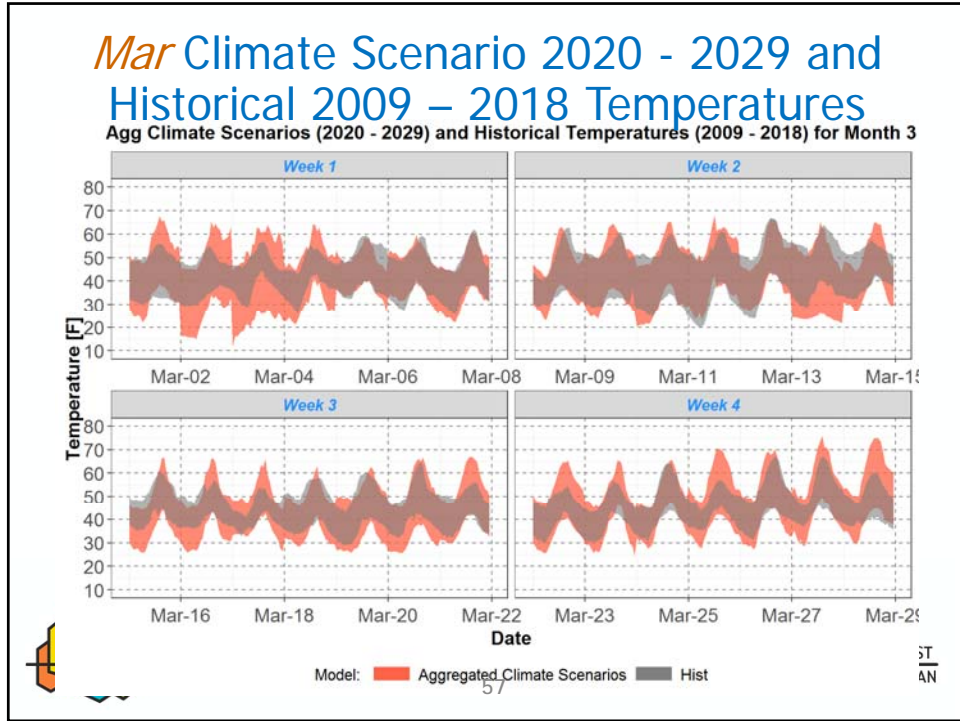
54



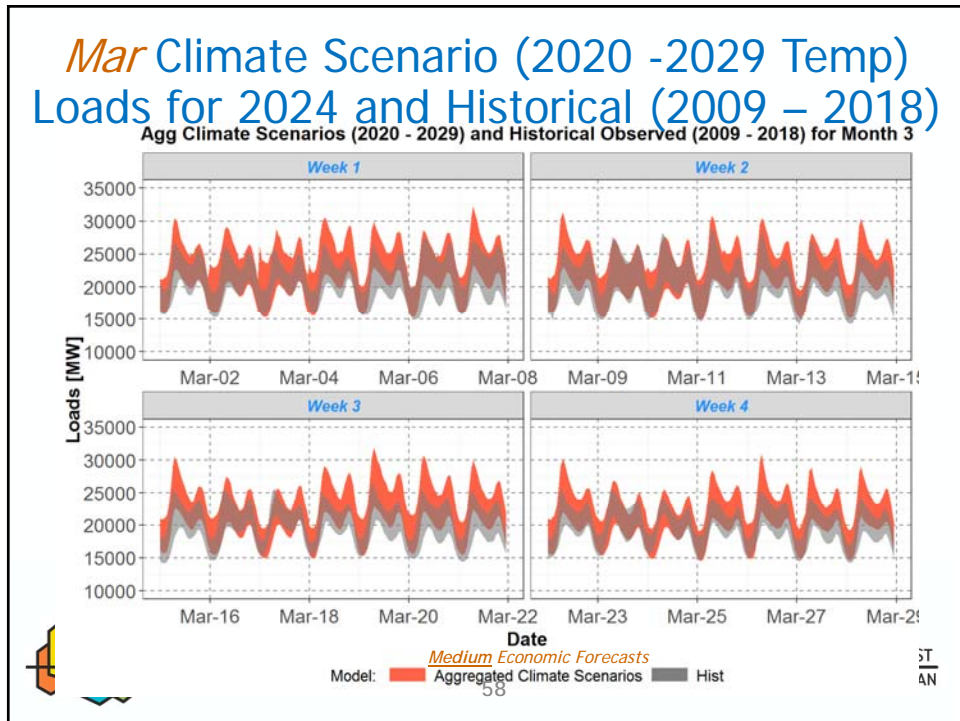
55



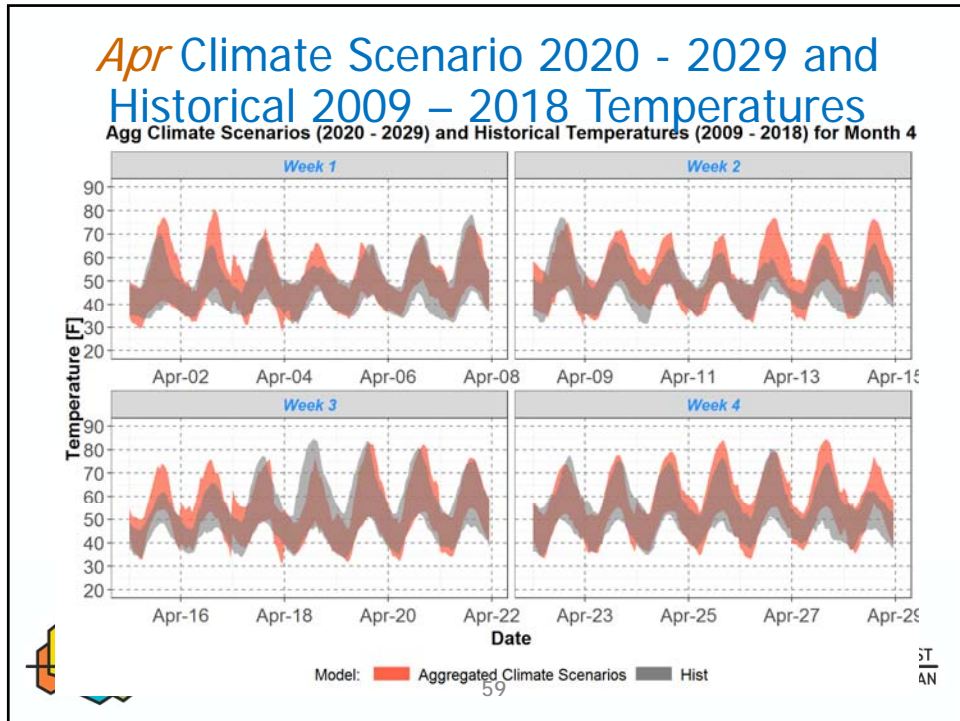
56



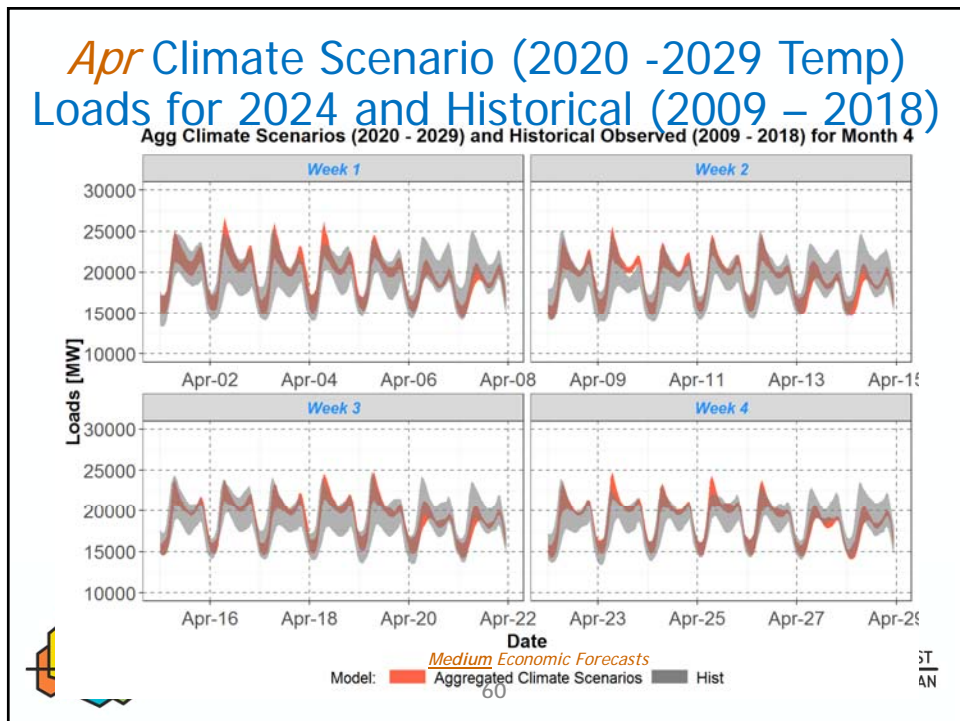
57



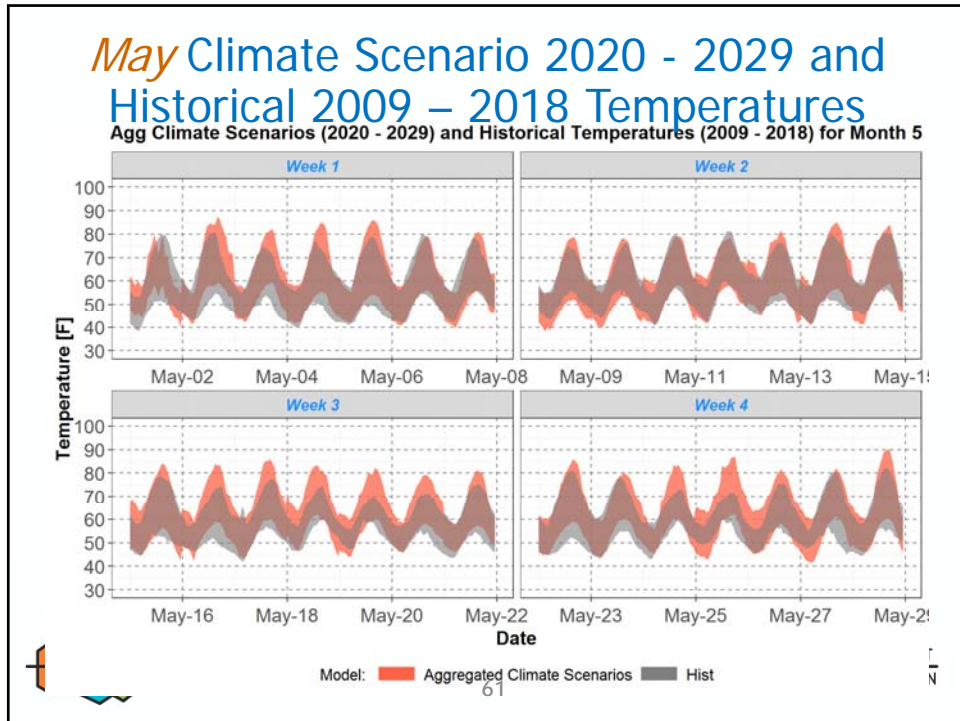
58



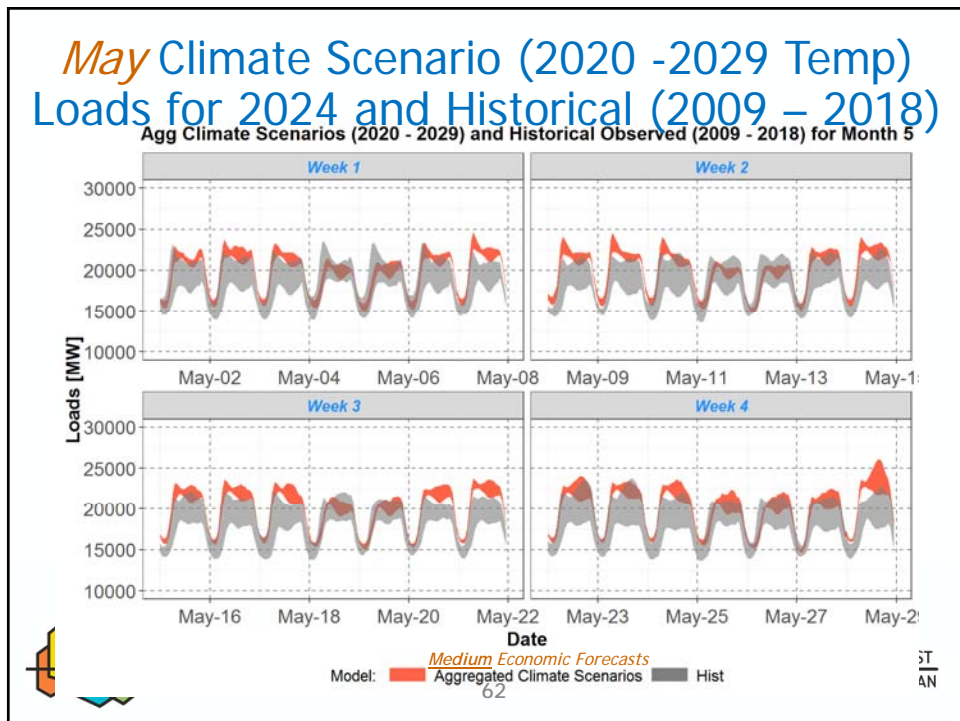
59



60

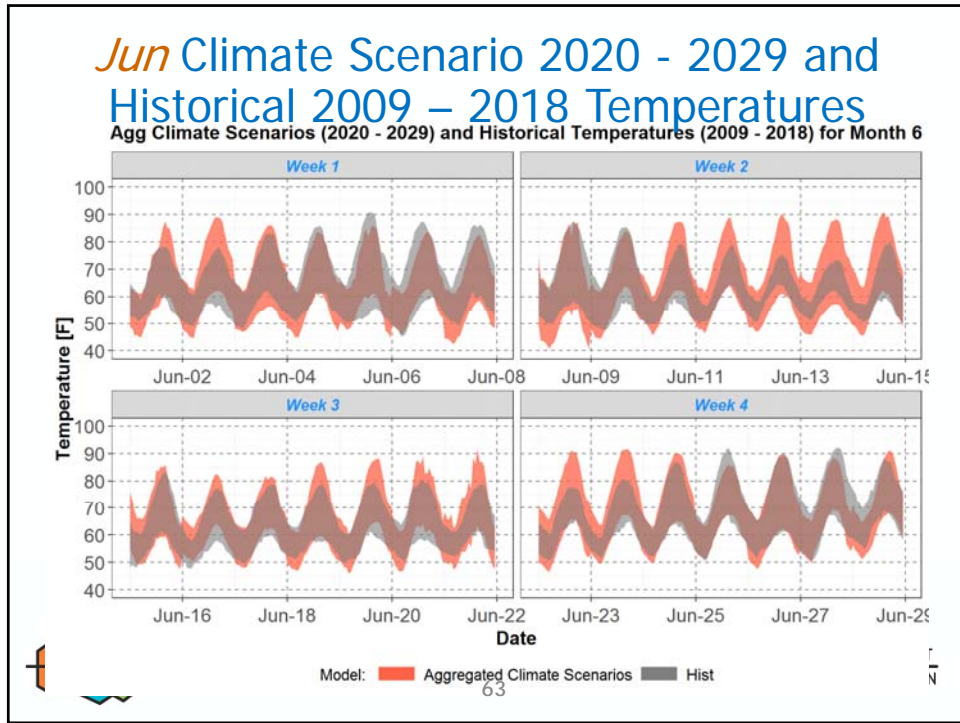


61

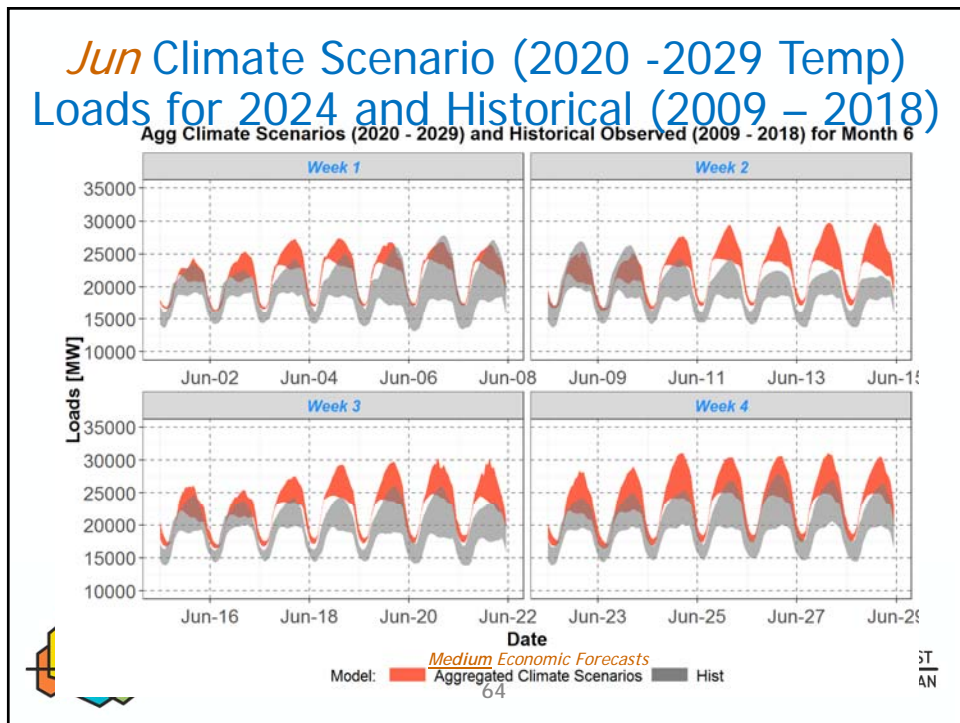


62

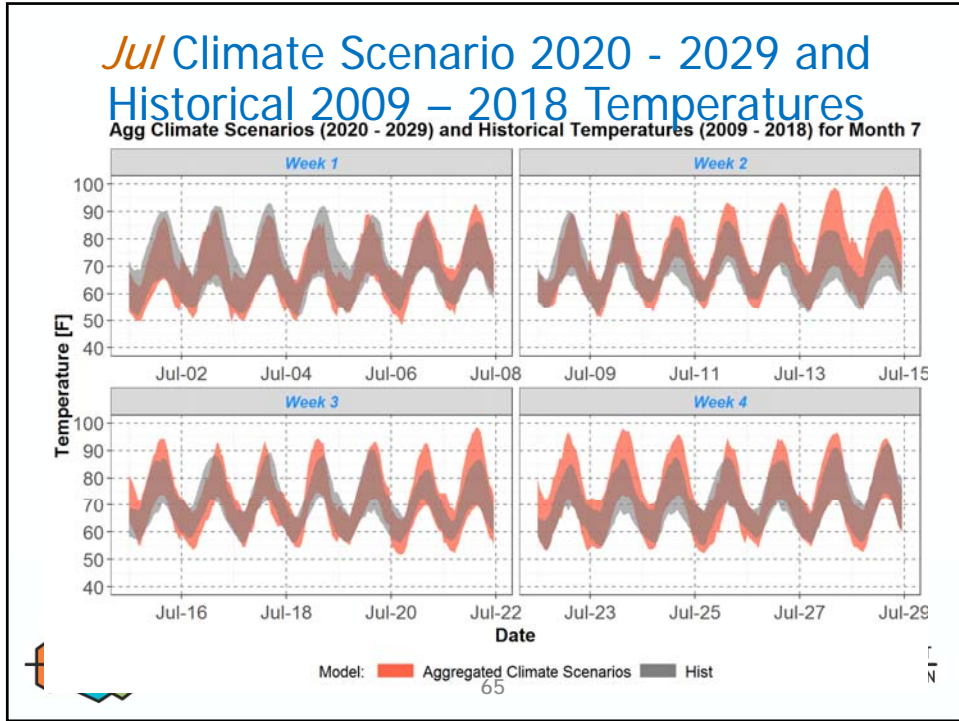




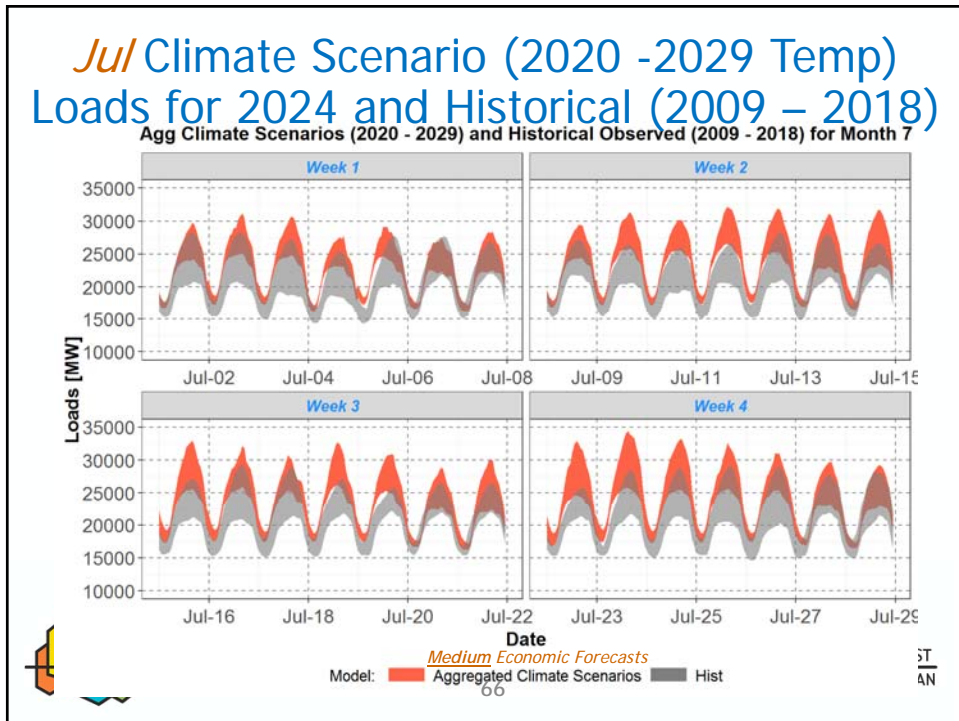
63



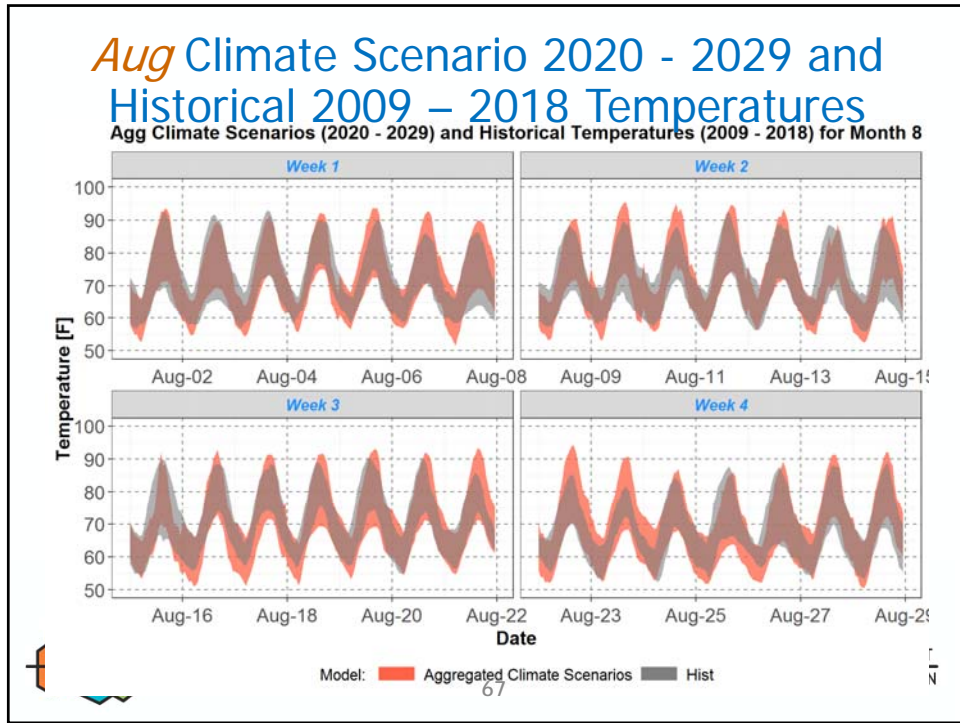
64



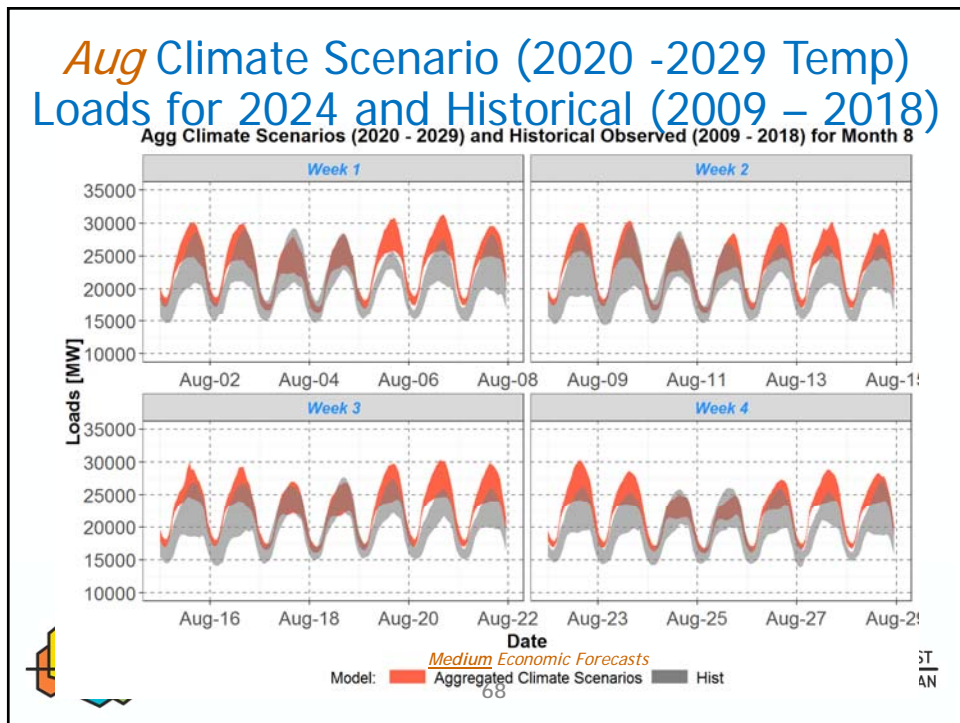
65



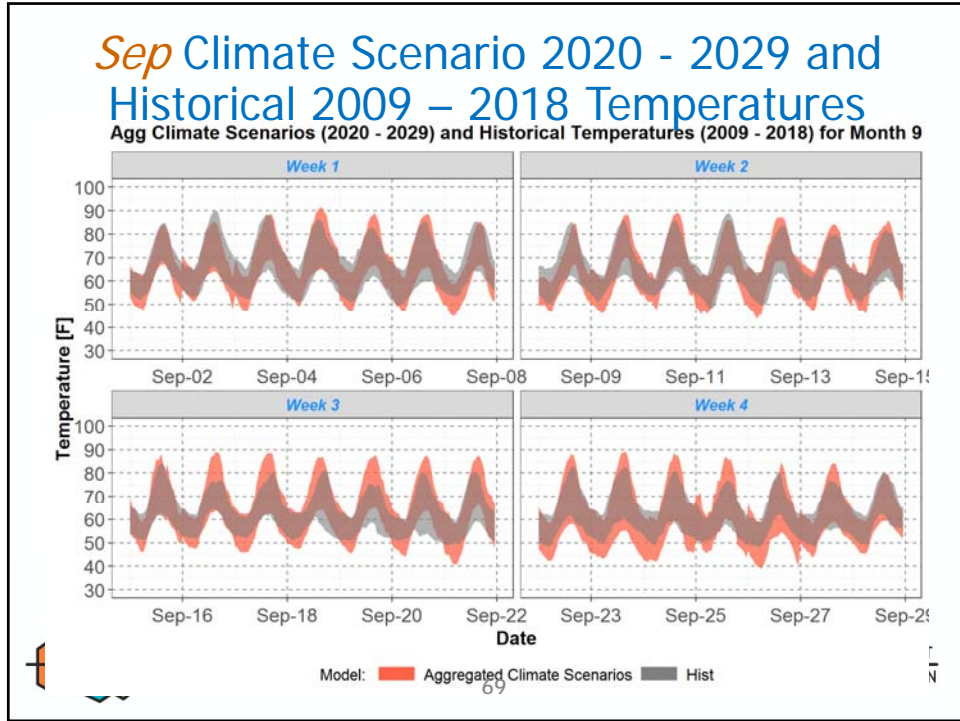
66



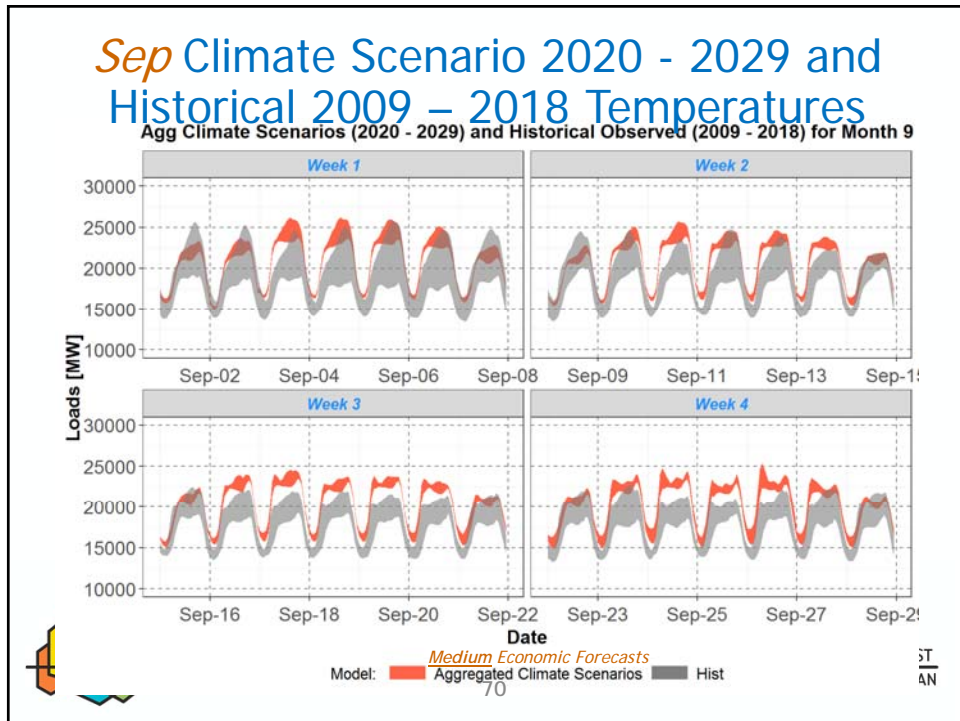
67



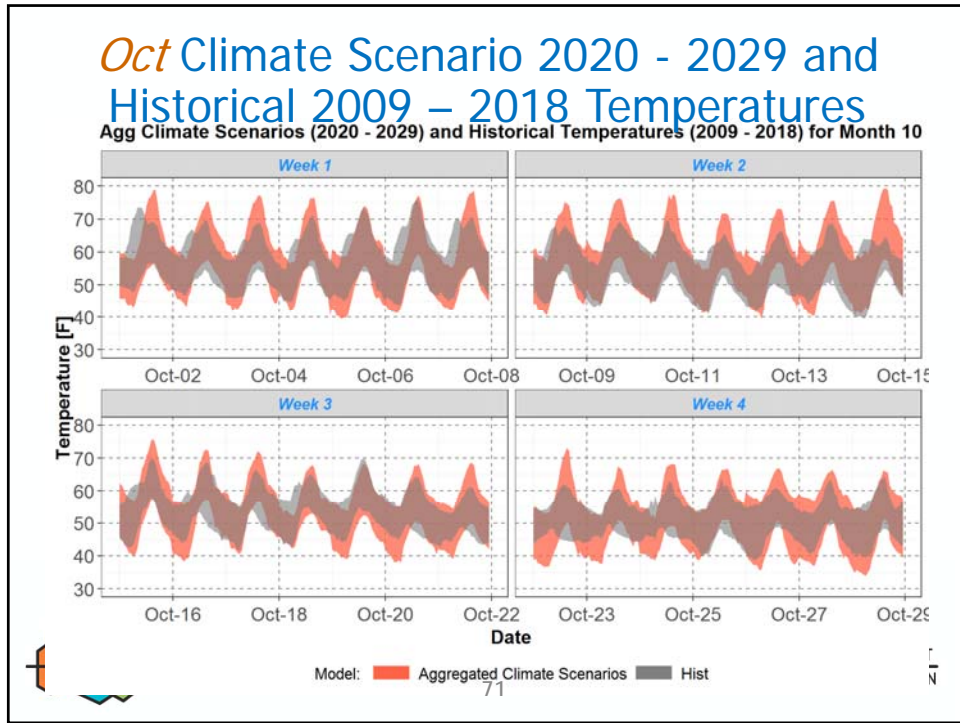
68



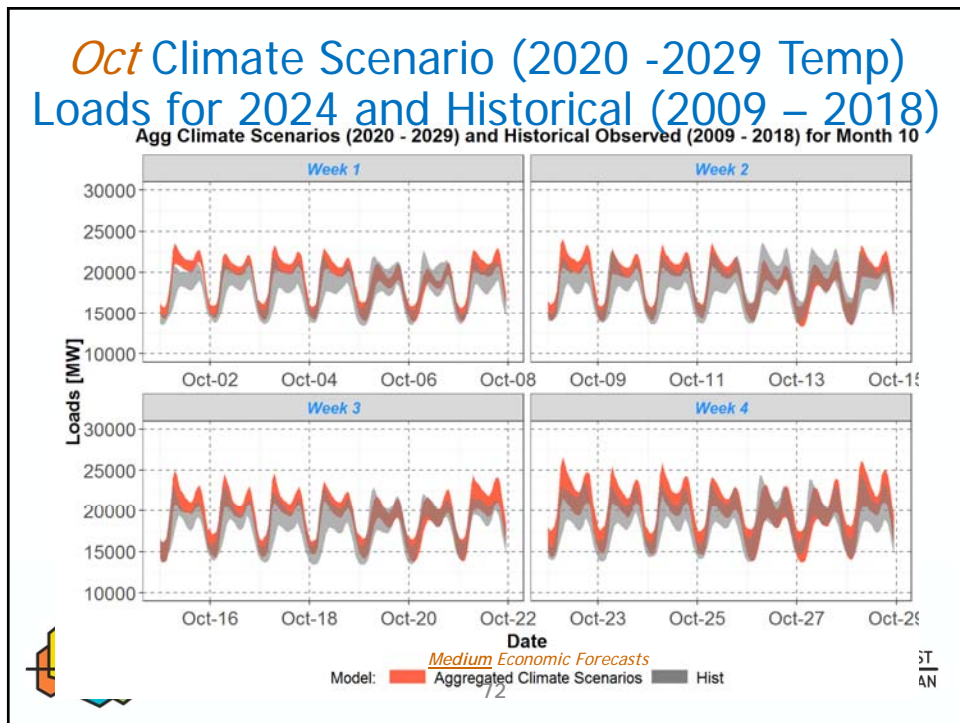
69



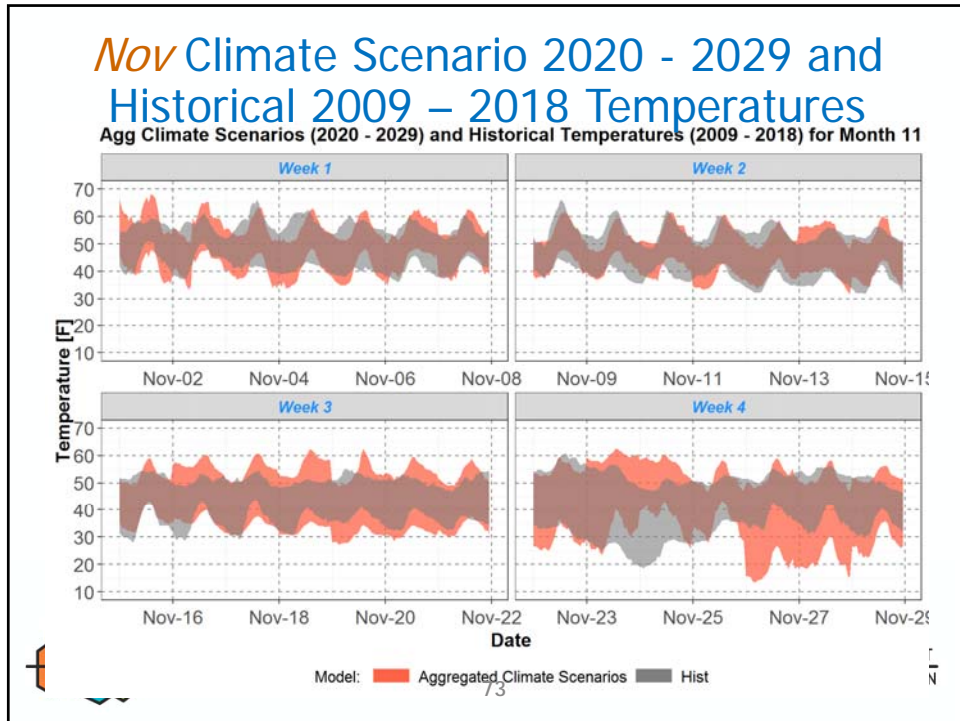
70



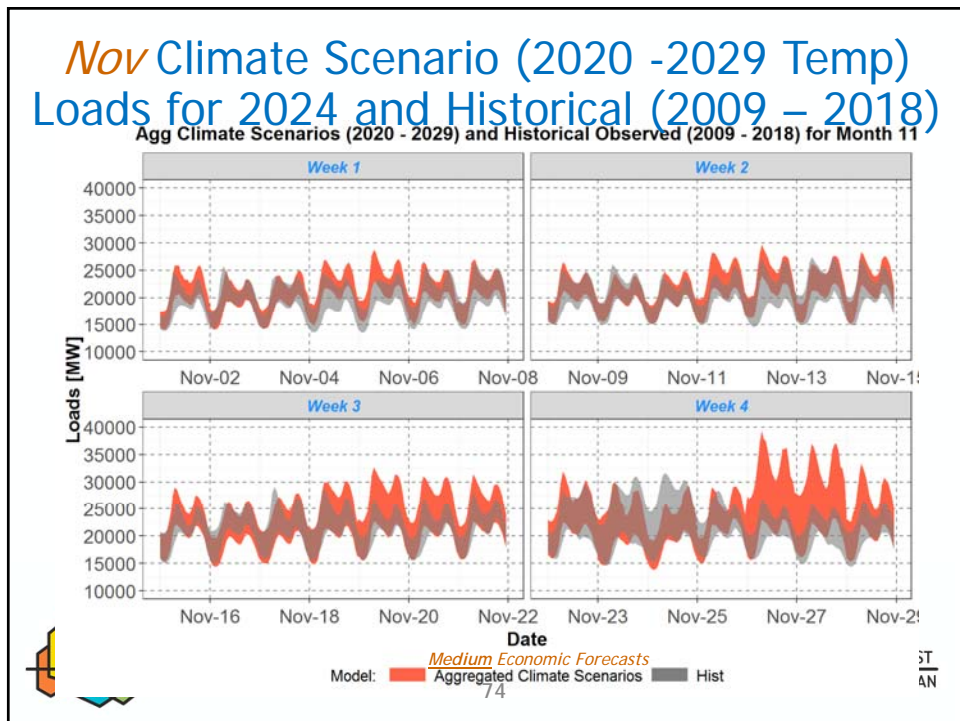
71



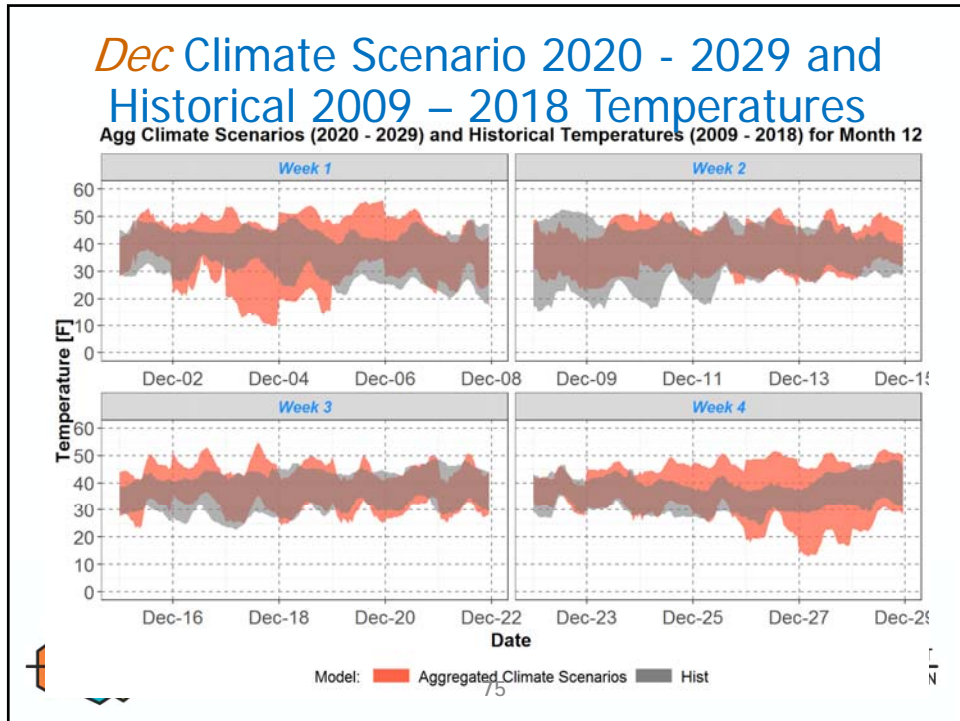
72



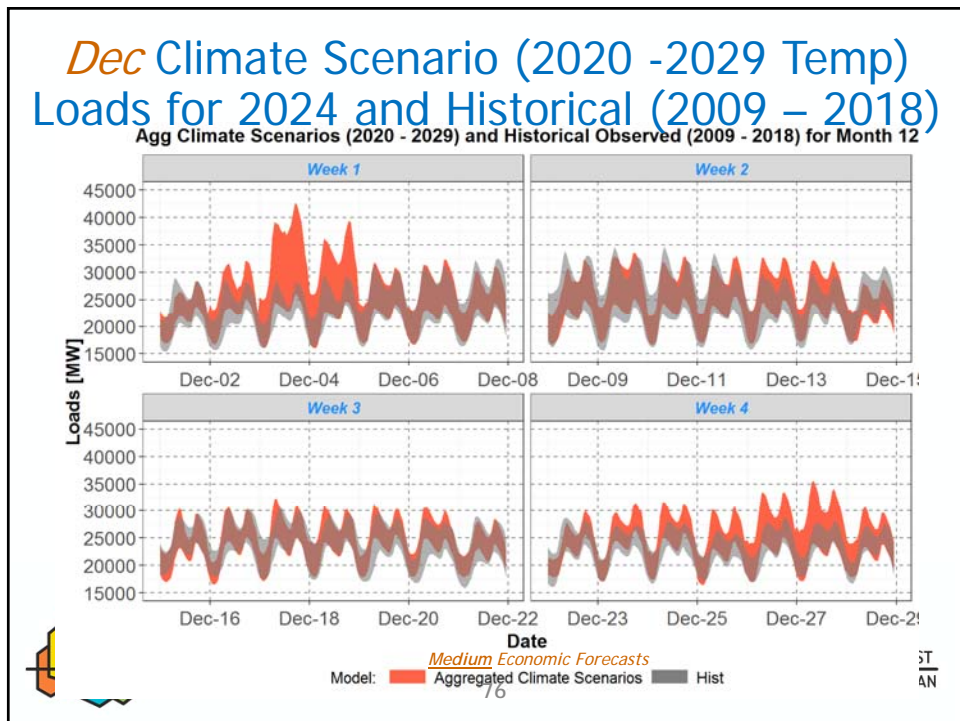
73



74



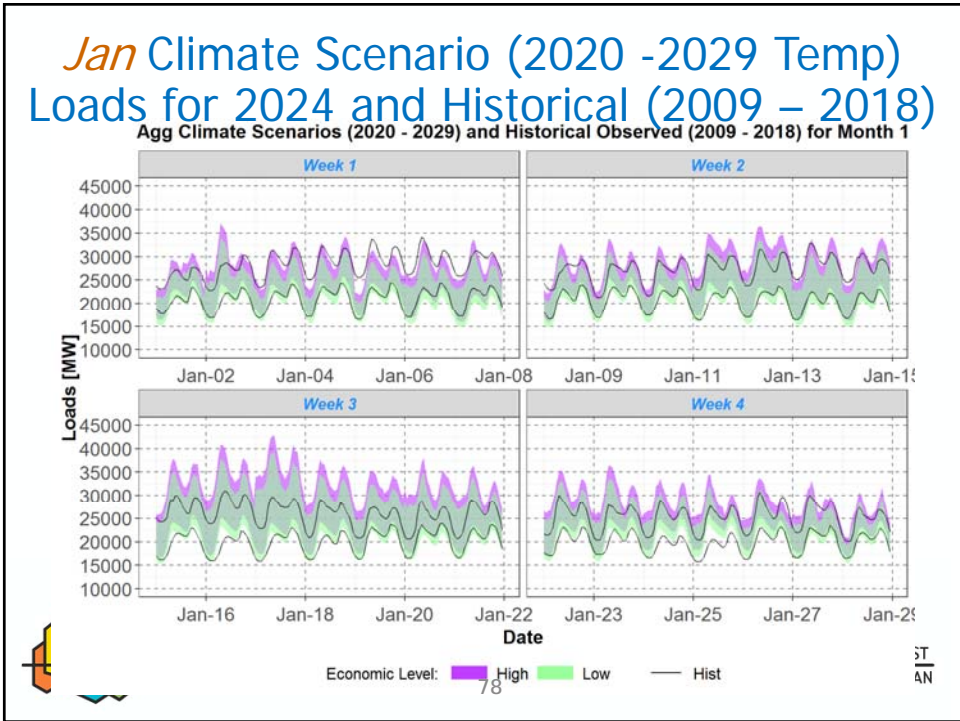
75



76

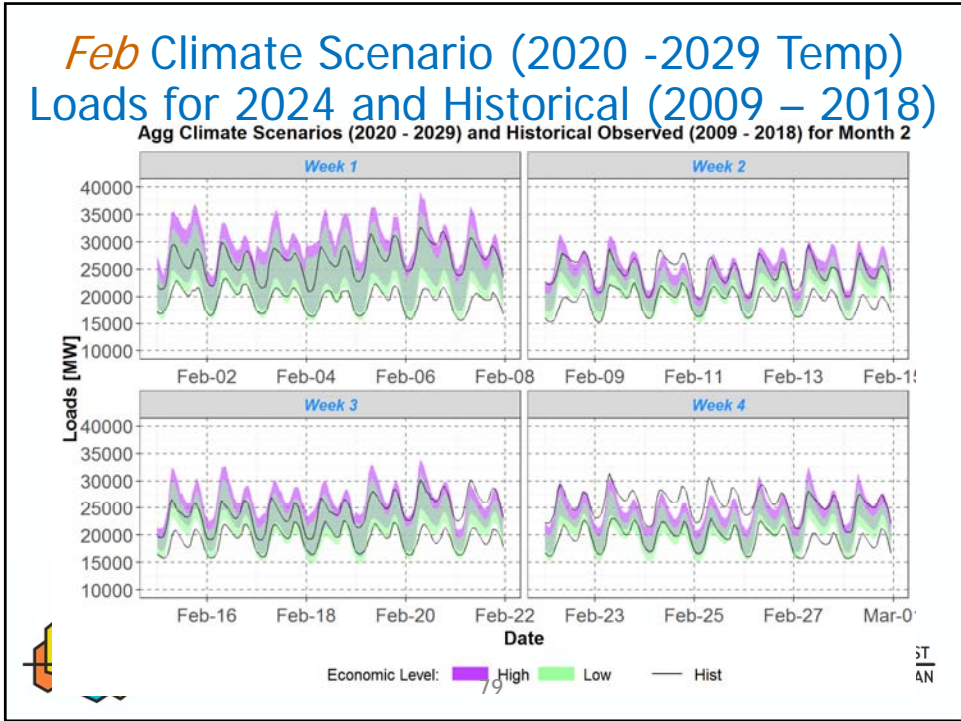
# Climate (High and Low Economic Forecasts) vs Historical Hourly Loads by Month

77

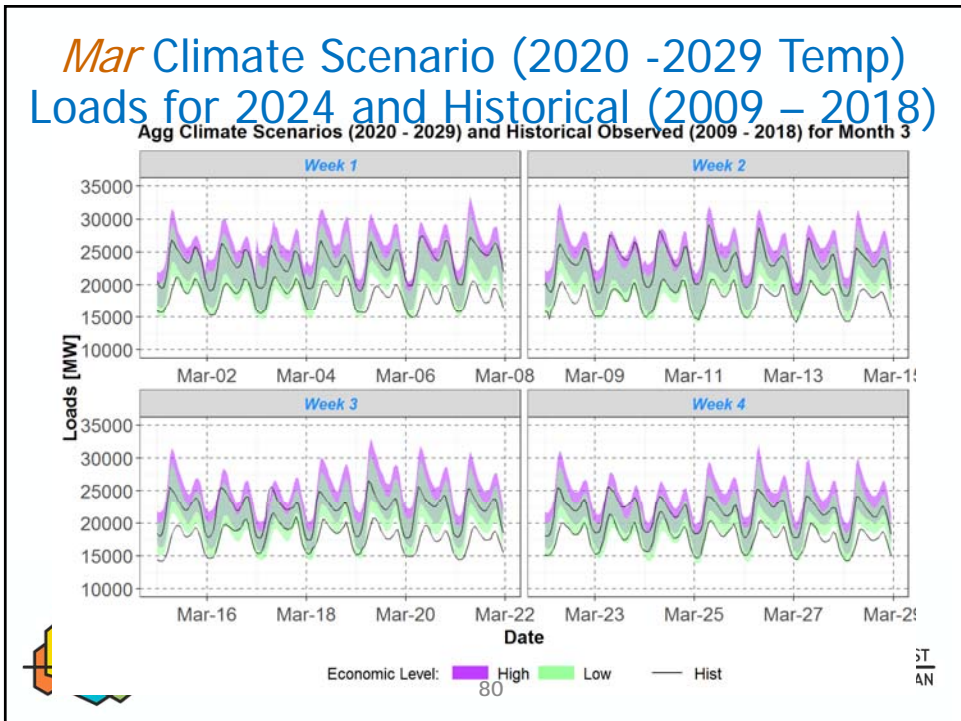


78

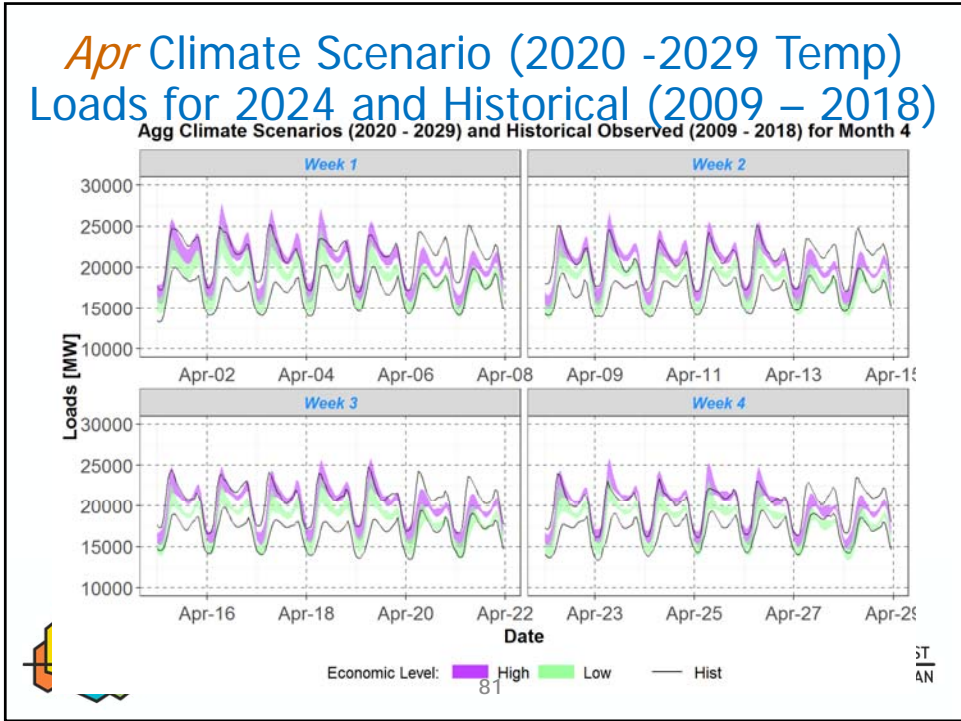




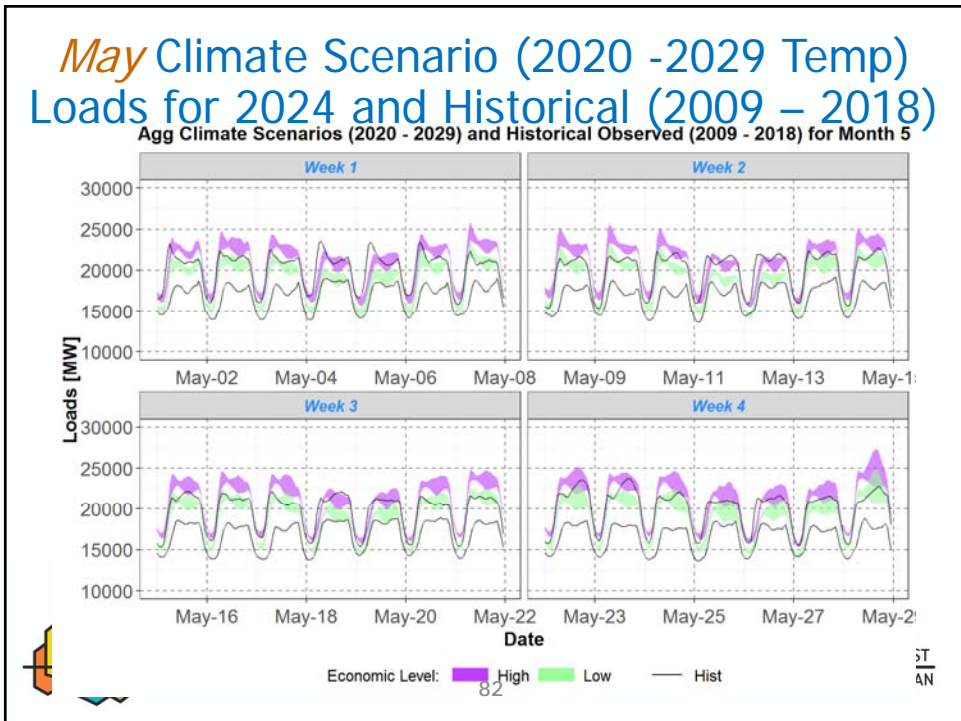
79



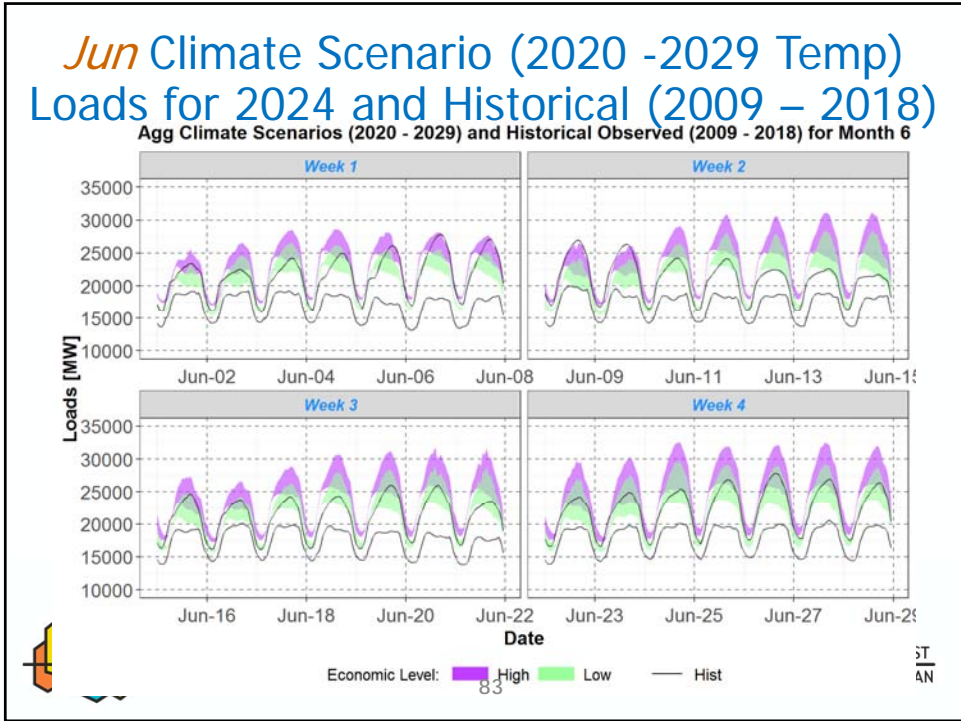
80



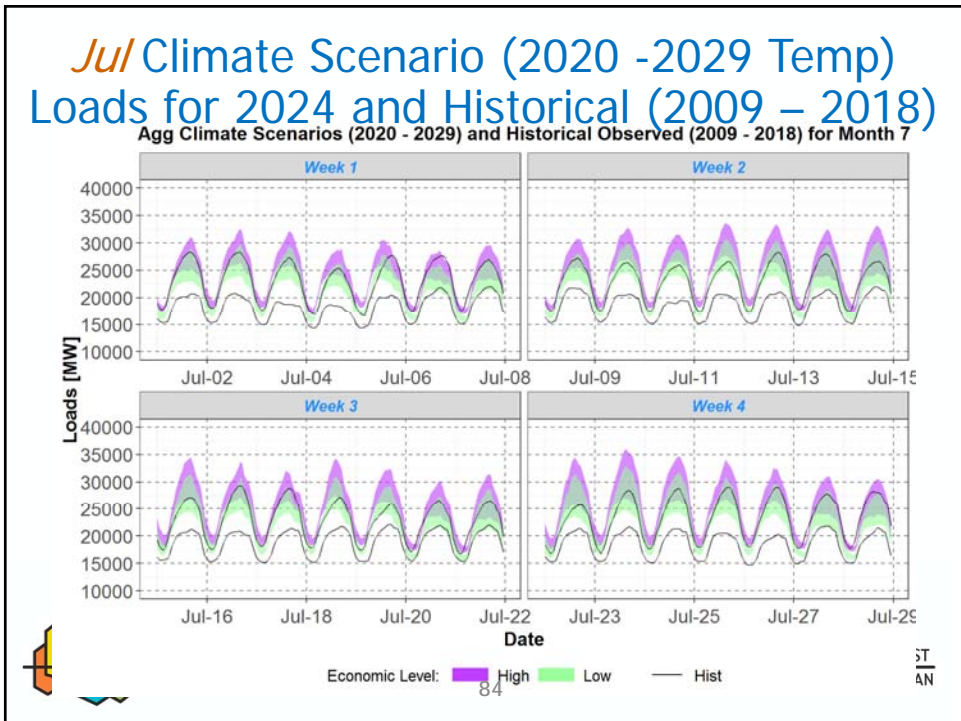
81



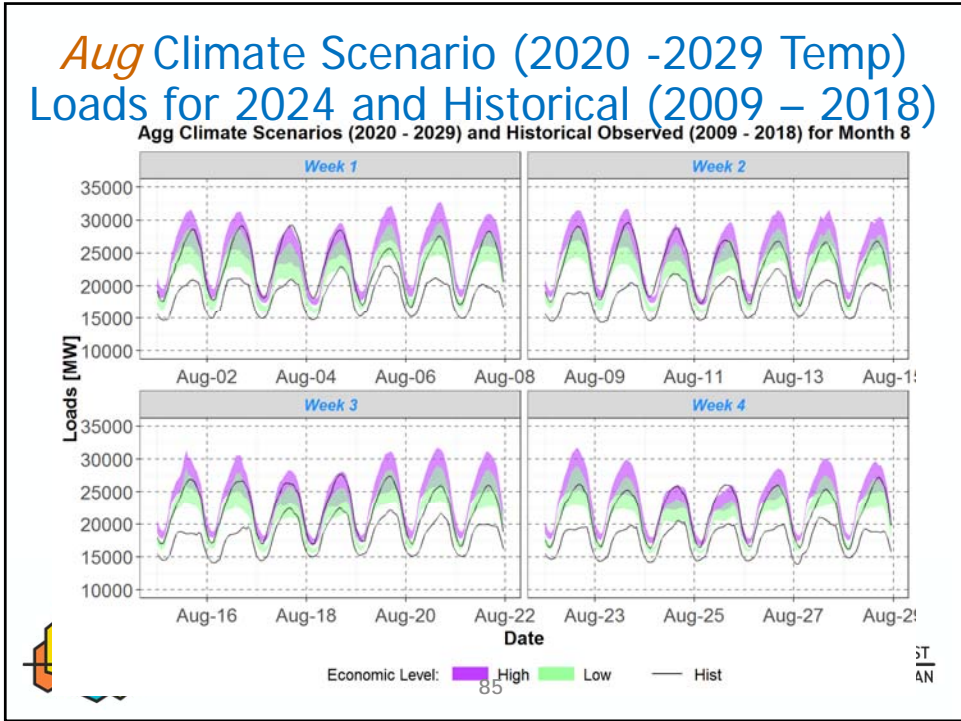
82



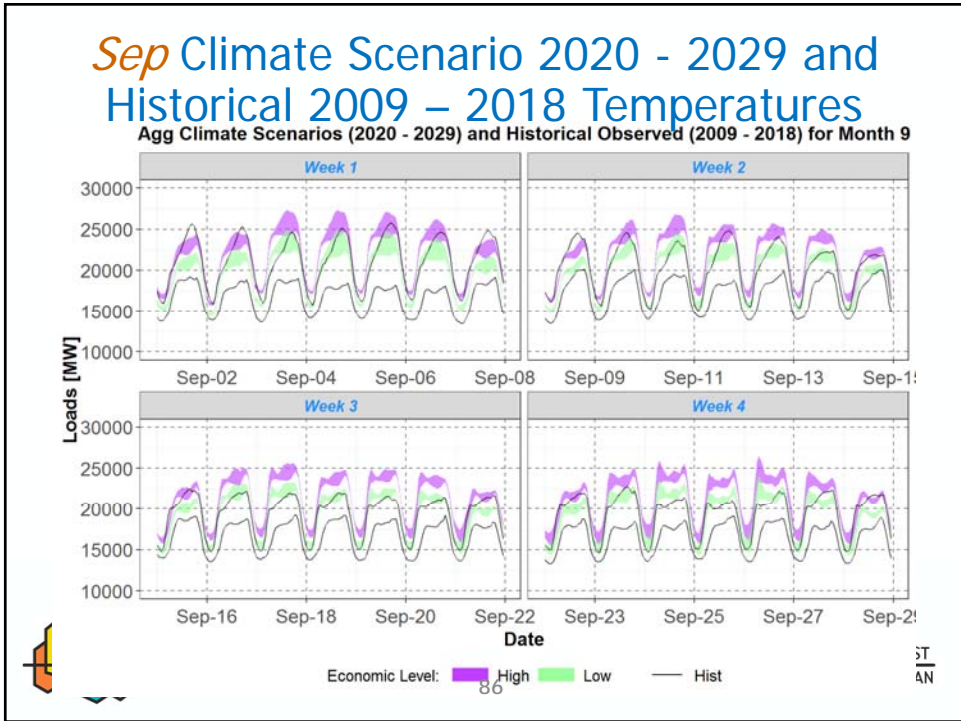
83



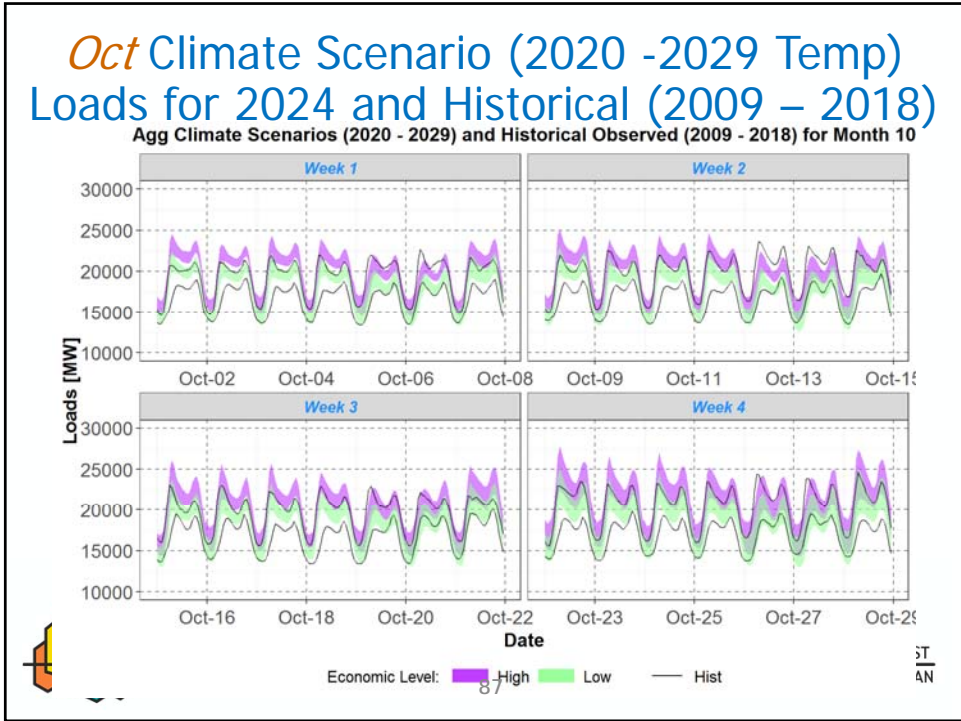
84



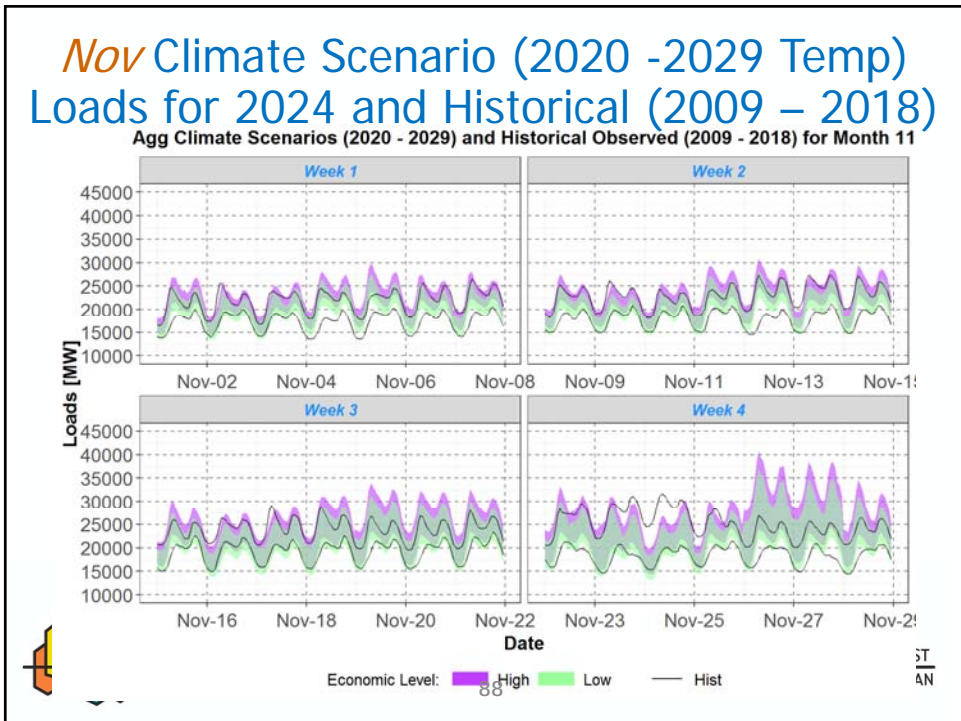
85



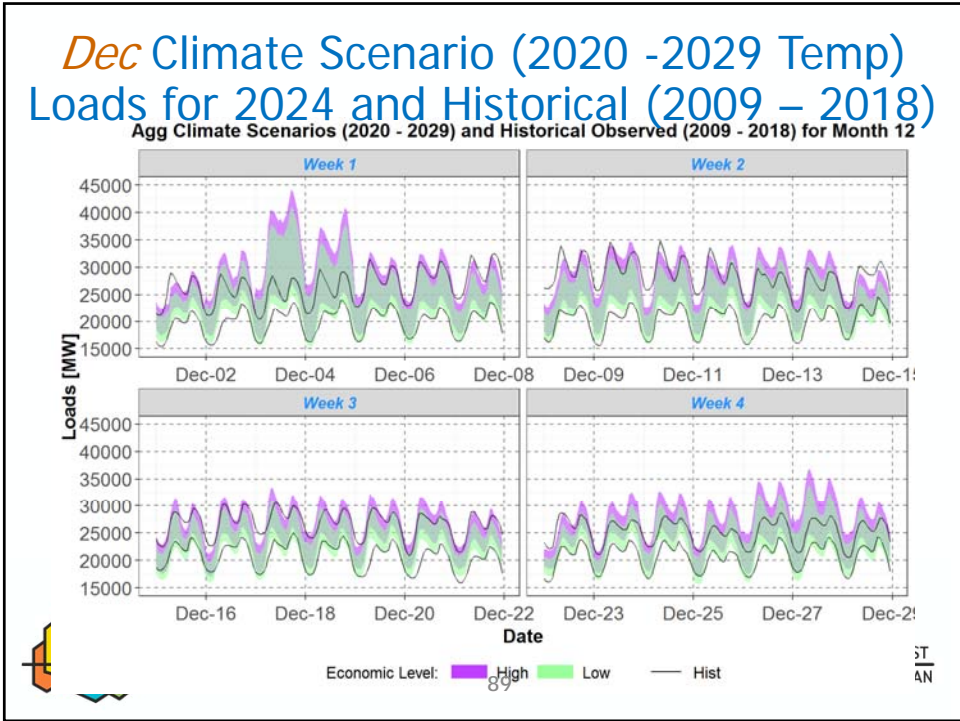
86



87



88



89