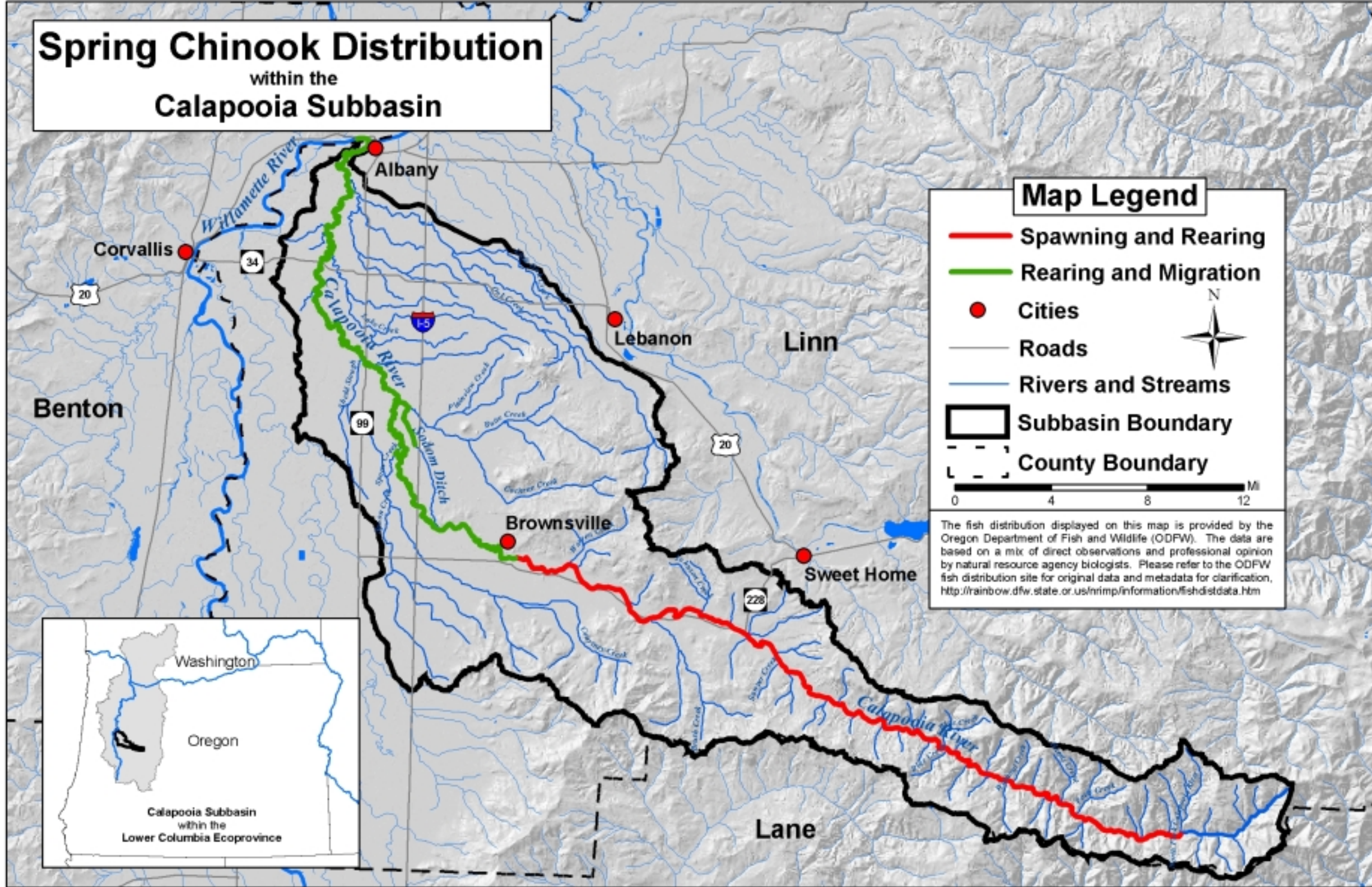


Fish Distribution Maps

Spring Chinook Distribution within the Calapooia Subbasin

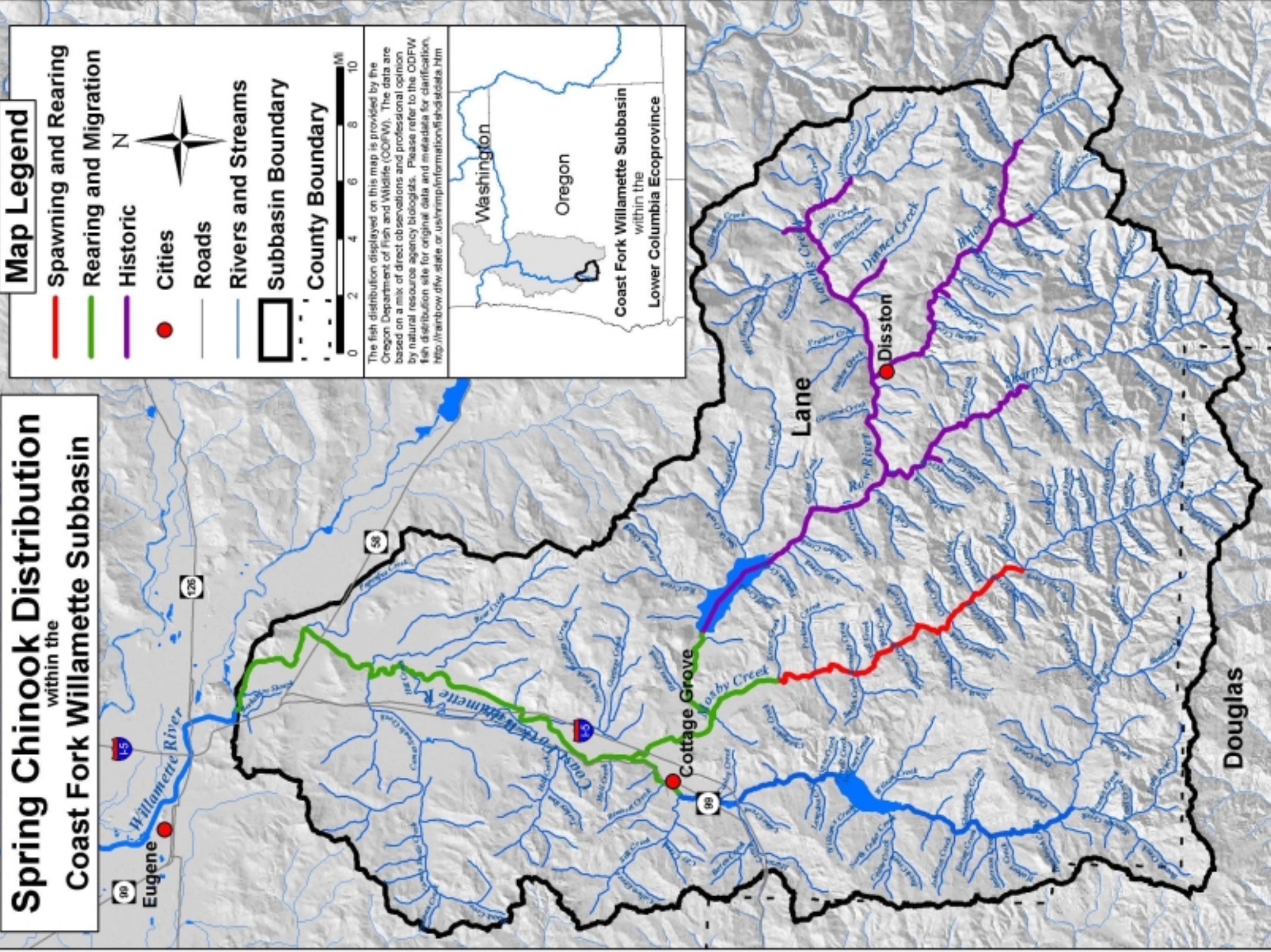


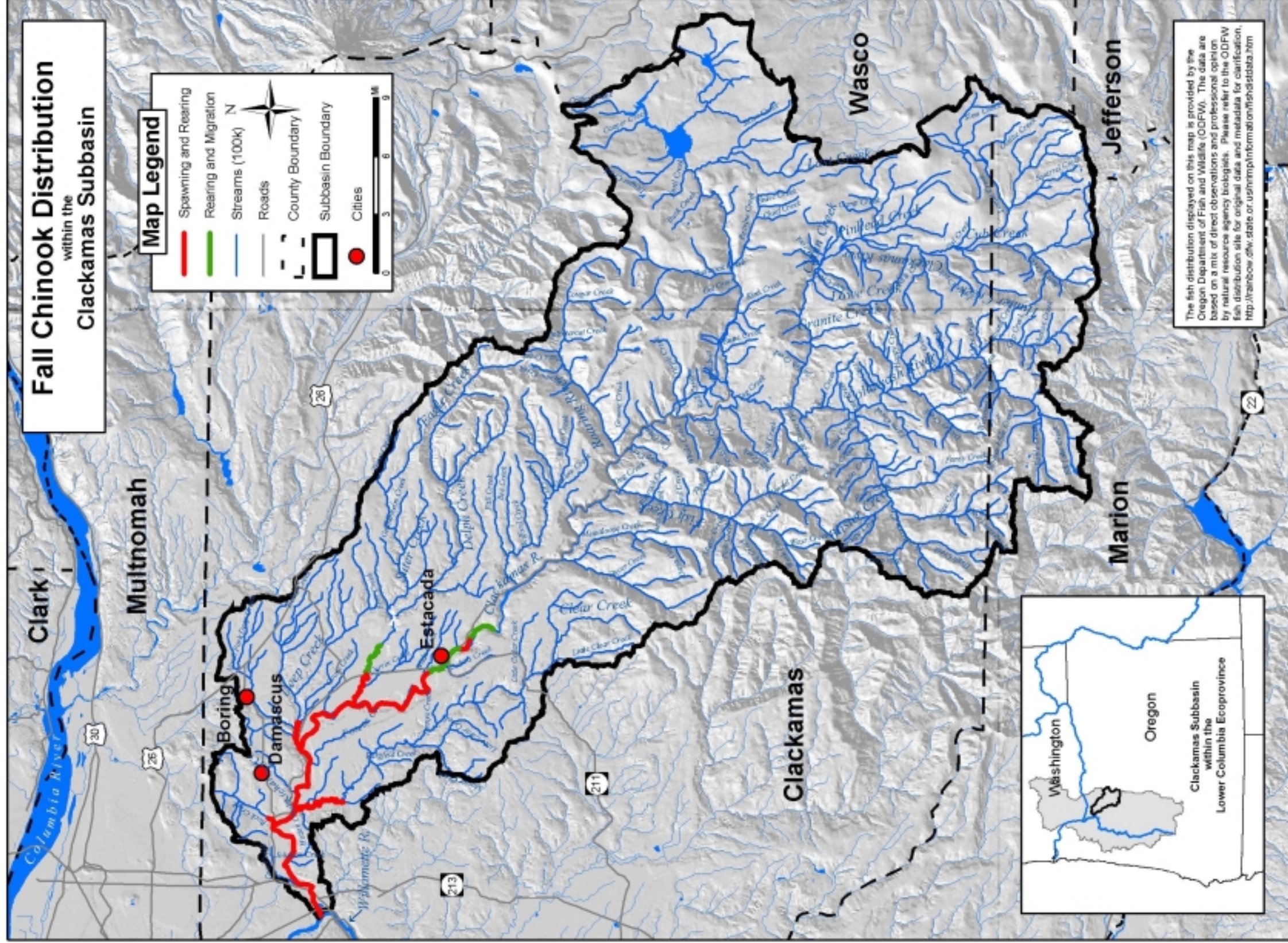
Map Legend

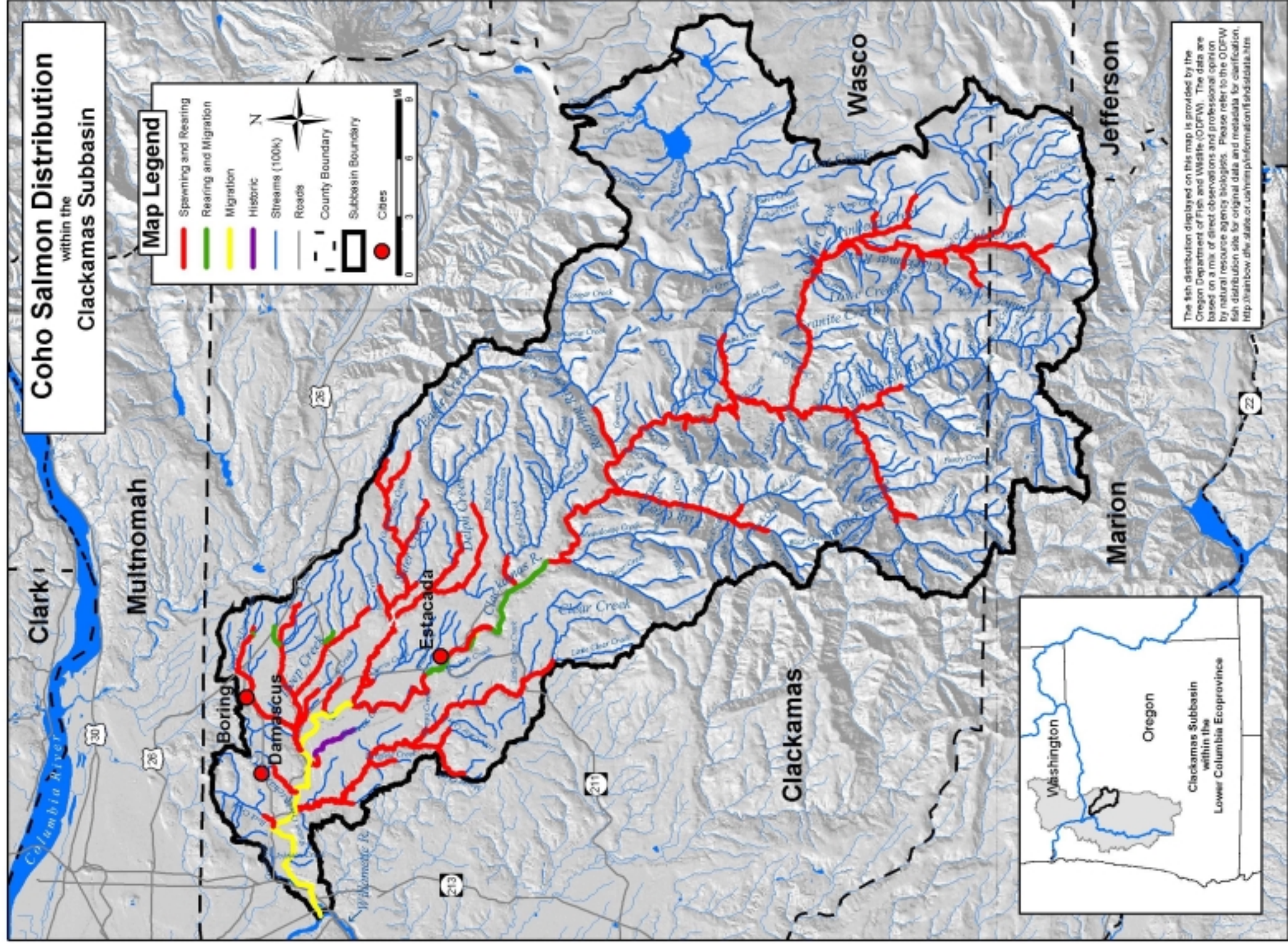
- Spawning and Rearing
 - Rearing and Migration
 - Cities
 - Roads
 - Rivers and Streams
 - ▭ Subbasin Boundary
 - - - County Boundary
- 0 4 8 12 Mi

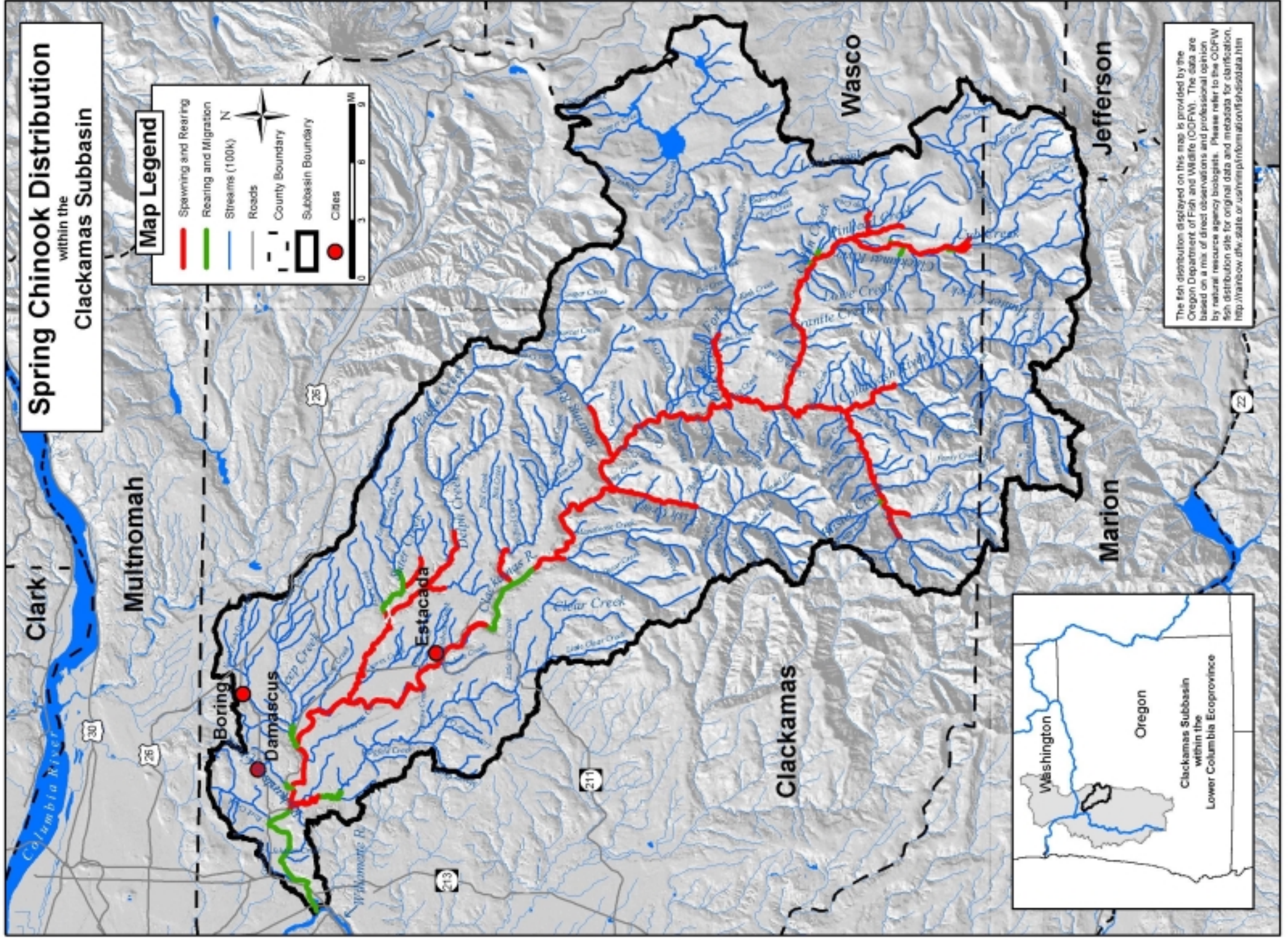
The fish distribution displayed on this map is provided by the Oregon Department of Fish and Wildlife (ODFW). The data are based on a mix of direct observations and professional opinion by natural resource agency biologists. Please refer to the ODFW fish distribution site for original data and metadata for clarification, <http://rainbow.dfw.state.or.us/nrimp/information/fishdistdata.htm>

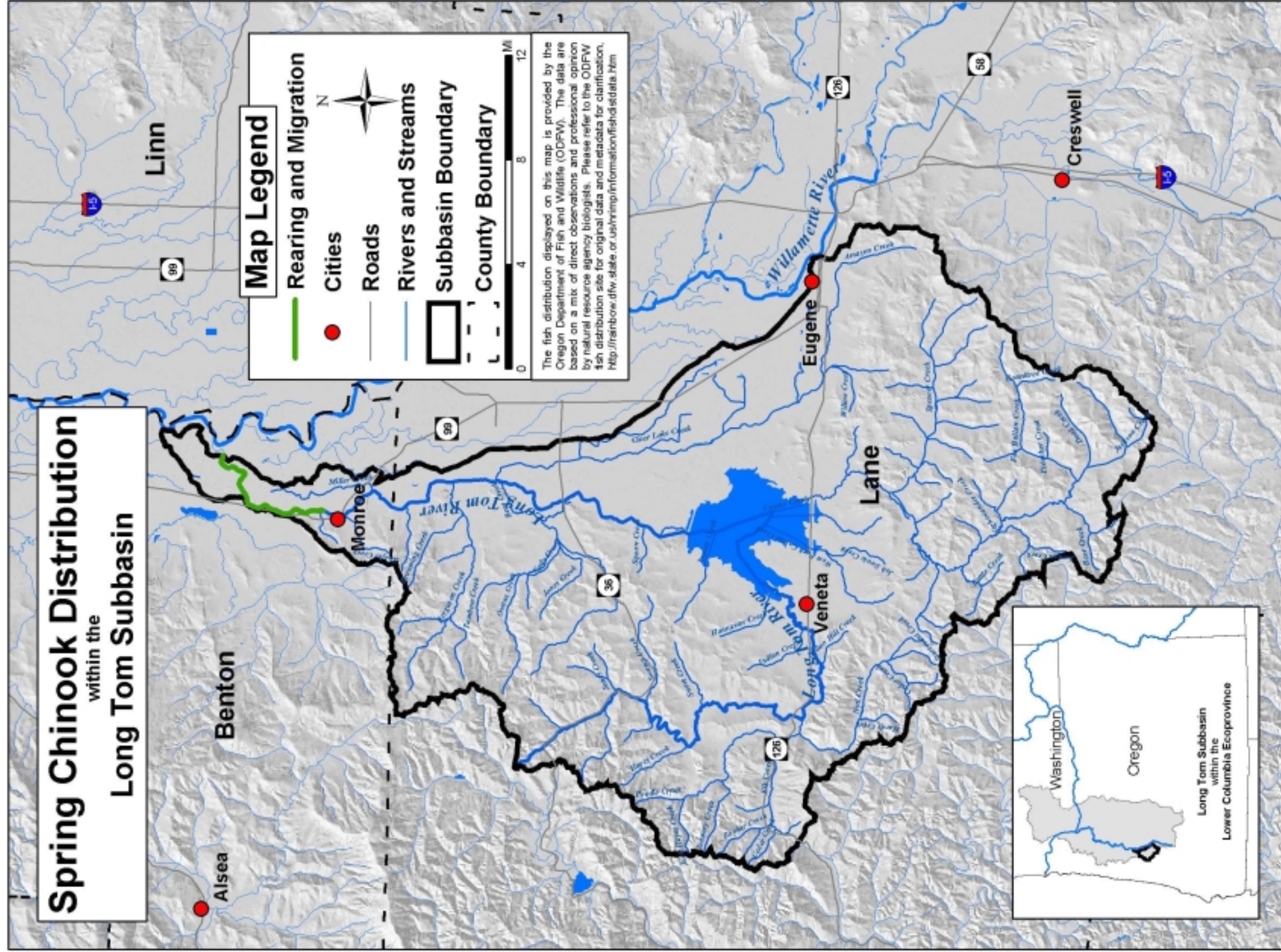












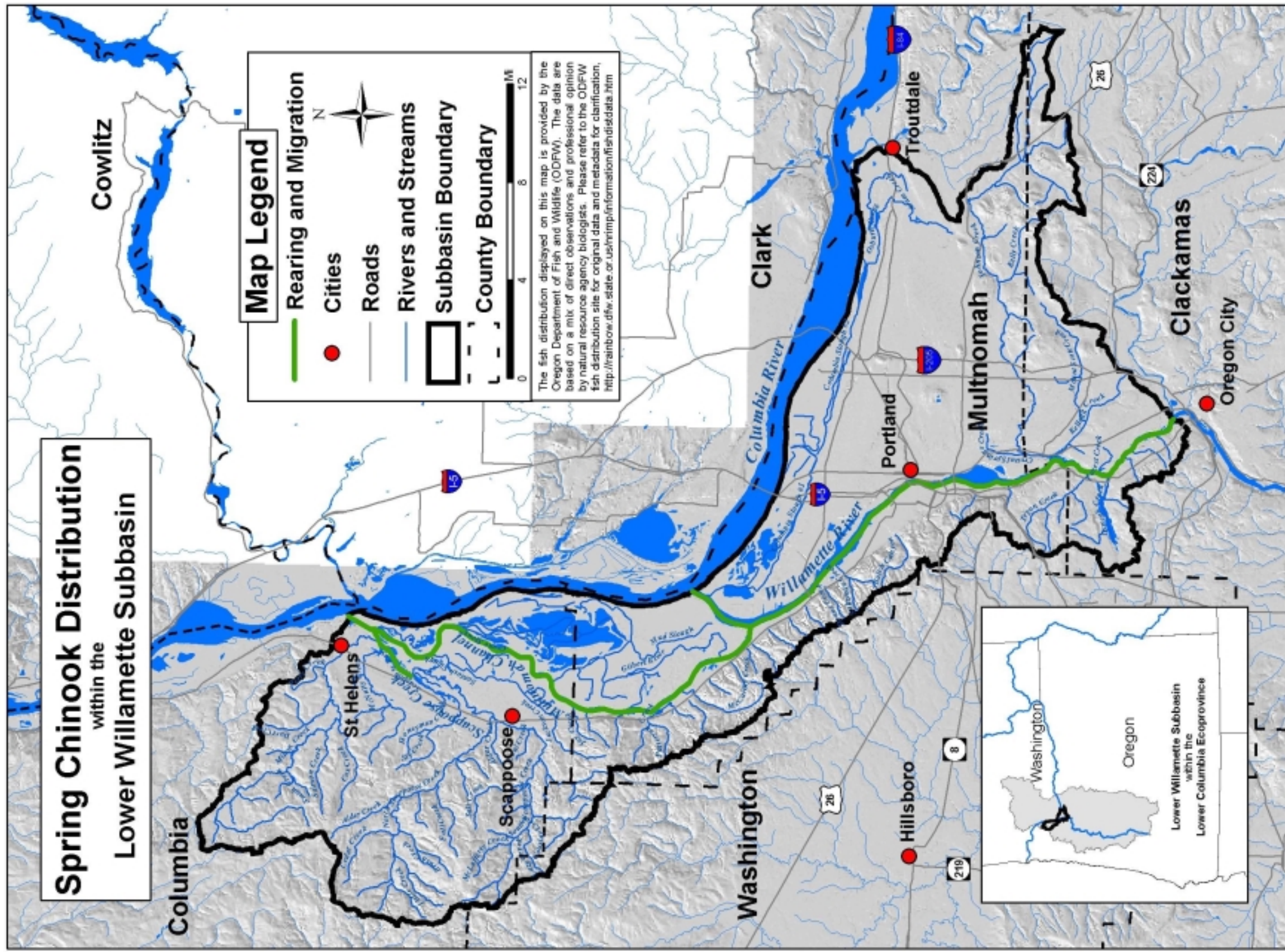
Spring Chinook Distribution
within the
Long Tom Subbasin

Map Legend

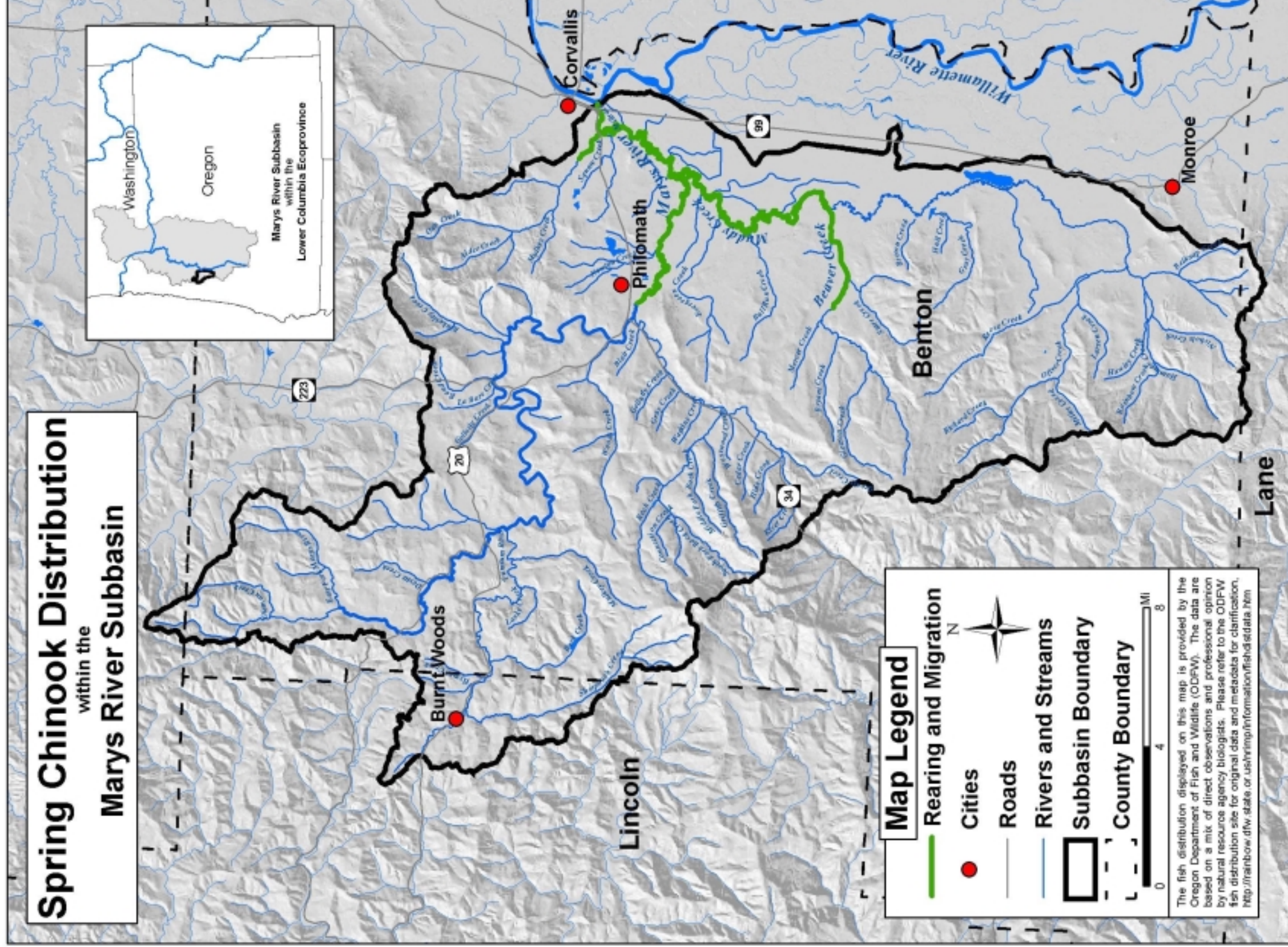
- Rearing and Migration
- Cities
- Roads
- Rivers and Streams
- Subbasin Boundary
- County Boundary

The fish distribution displayed on this map is provided by the Oregon Department of Fish and Wildlife (ODFW). The data are based on a mix of direct observations and professional opinion by natural resource agency biologists. Please refer to the ODFW fish distribution site for original data and metadata for clarification. <http://rainbow.dfw.state.or.us/hrrmp/information/fishdata.htm>





Spring Chinook Distribution within the Marys River Subbasin



Map Legend

- Rearing and Migration
- Cities
- Roads
- Rivers and Streams
- ▭ Subbasin Boundary
- - - County Boundary



The fish distribution displayed on this map is provided by the Oregon Department of Fish and Wildlife (ODFW). The data are based on a mix of direct observations and professional opinion by natural resource agency biologists. Please refer to the ODFW fish distribution site for original data and metadata for clarification. <http://rainbow.dfw.state.or.us/hyinfo/information/fishdata.htm>

