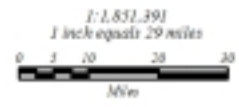


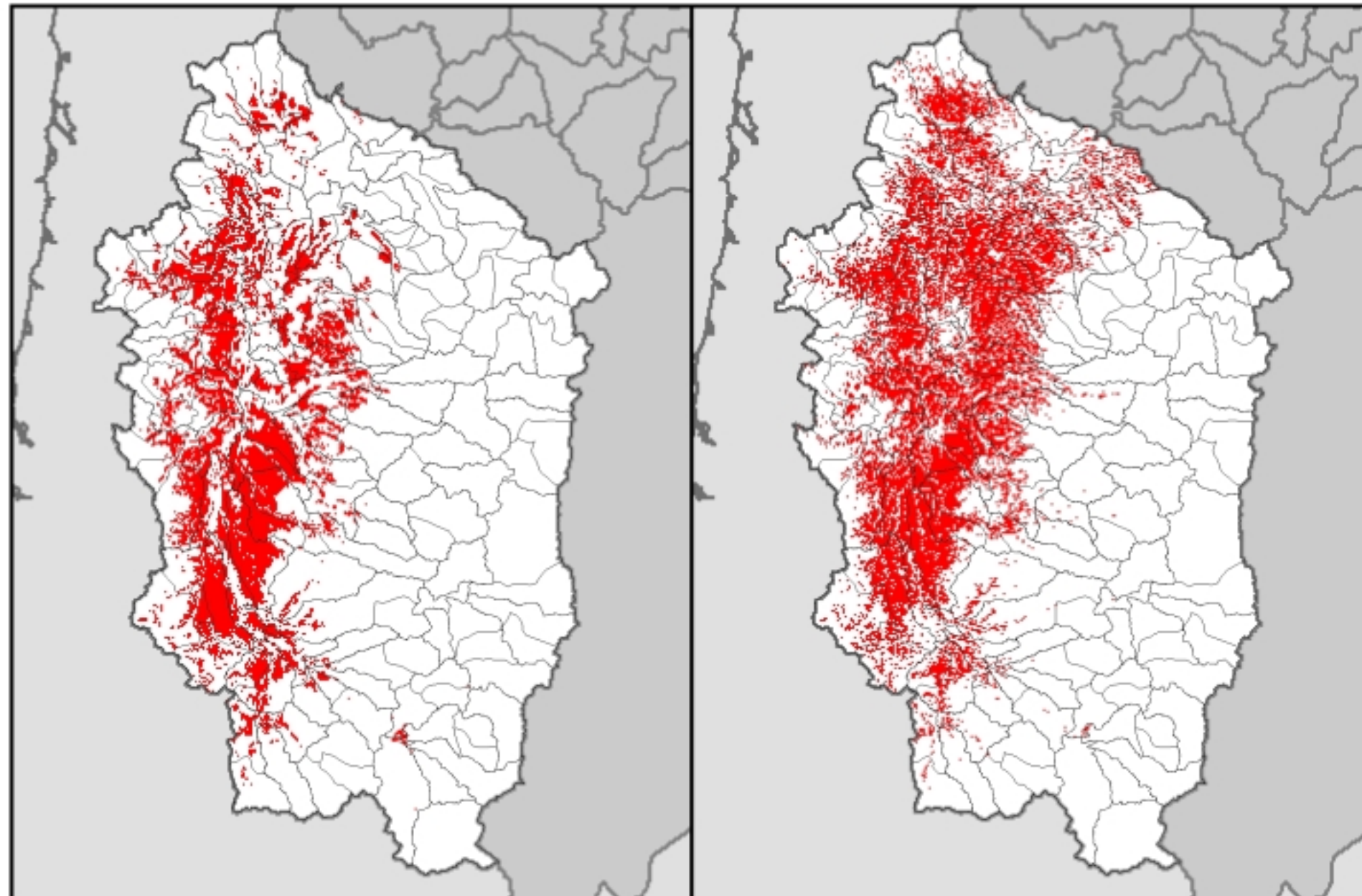
Historic (c. 1850) Rangemap

Historic and Current Rangemaps  
for the  
Chipping Sparrow  
Willamette Subbasin  
Columbia River Basin  
United States

Current (1999) Rangemap



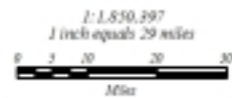
Source: University of Washington, Information Systems (2001).  
Northwest Fisheries Institute 2004.



Historic (c. 1850) Rangemap

Historic and Current Rangemaps  
for the  
Vesper Sparrow  
Willamette Subbasin  
Columbia River Basin  
United States

Current (1999) Rangemap



 Close Association



Interactive  
Biodiversity  
Information  
System

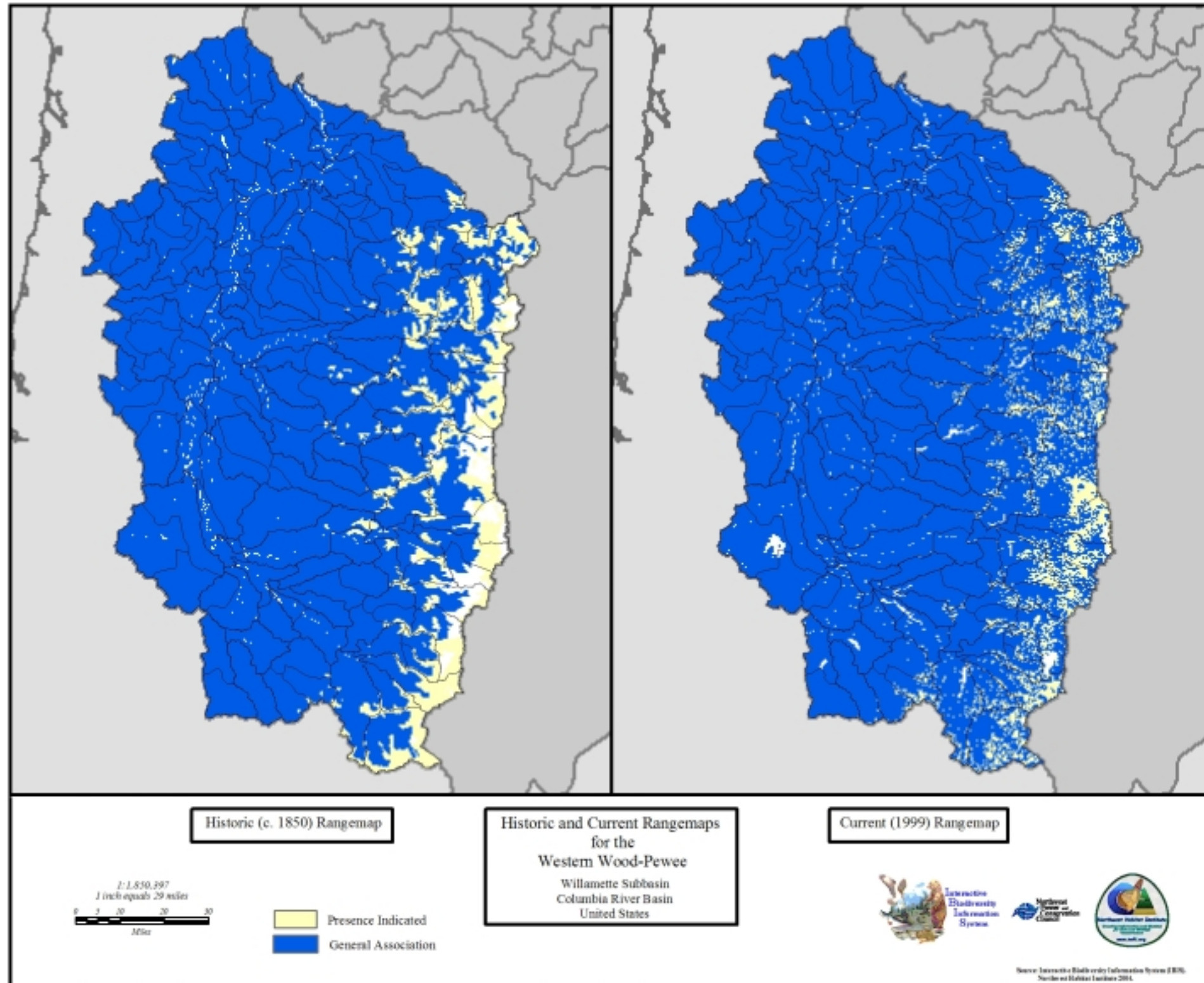


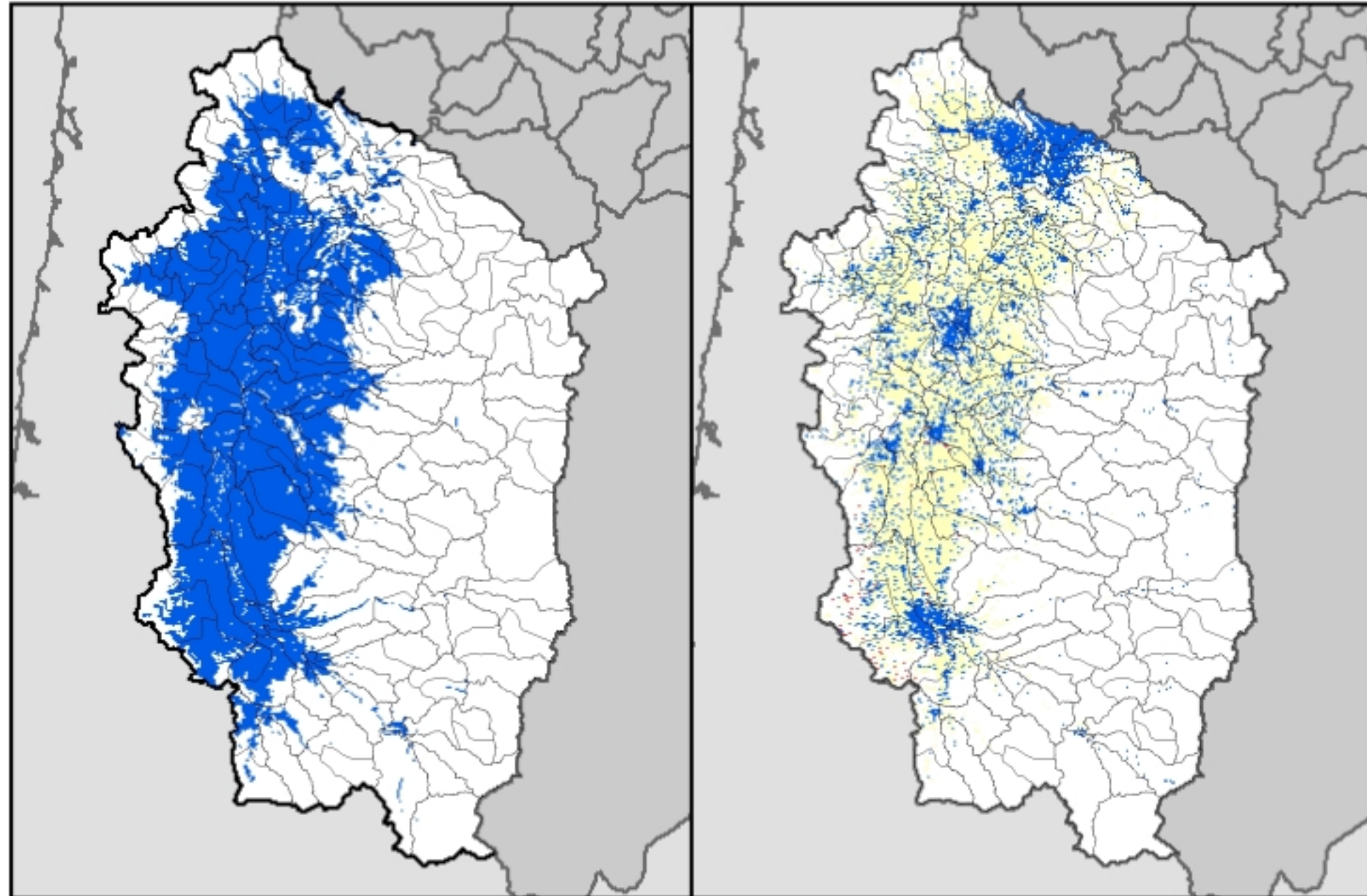
National  
Center for  
Conservation



Oregon Natural  
Heritage Society  
www.onhs.org

Source: Interactive Biodiversity Information System (IBIS),  
Species and Habitat Databases 2014.

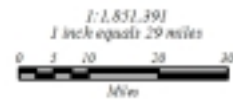




Historic (c. 1850) Rangemap

Historic and Current Rangemaps  
for the  
White-breasted Nuthatch  
Willamette Subbasin  
Columbia River Basin  
United States

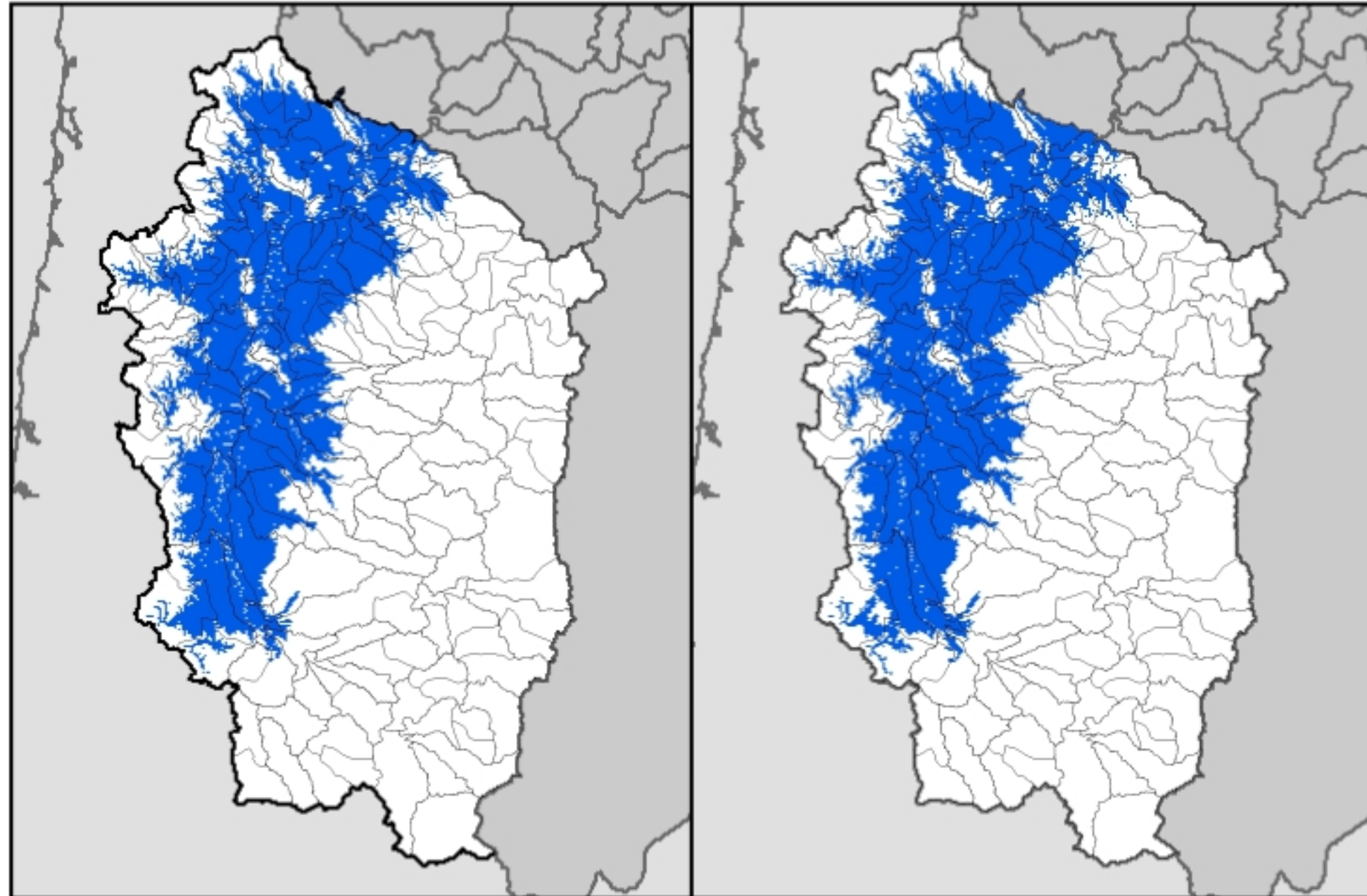
Current (1999) Rangemap



Interactive  
Diversity  
Information  
Systems



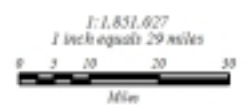
Source: University of Washington Information Systems (2001).  
Northwest National Institute 2001.



Historic (c. 1850) Rangemap

Historic and Current Rangemaps  
for the  
Sharptail Snake  
Willamette Subbasin  
Columbia River Basin  
United States

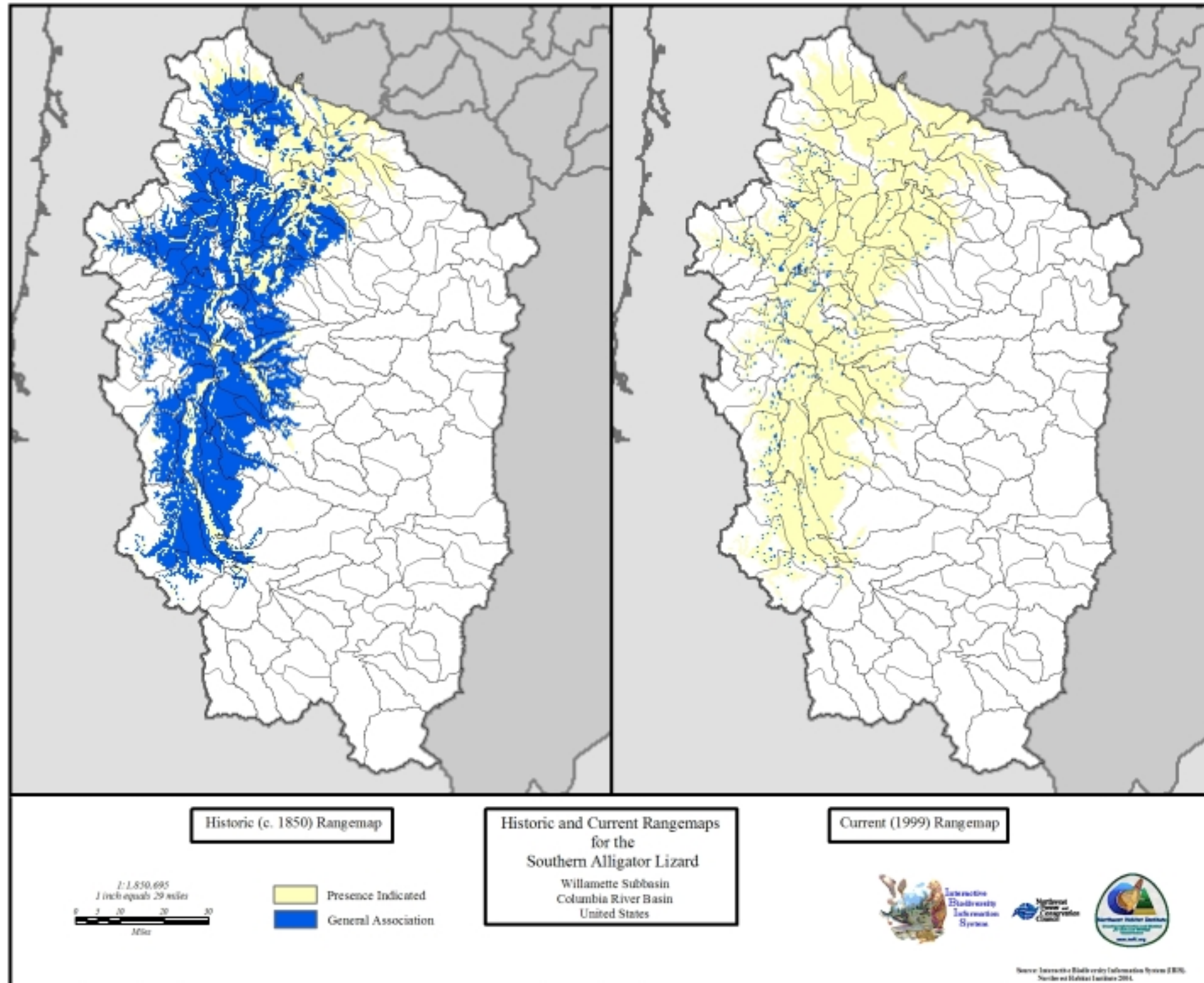
Current (1999) Rangemap

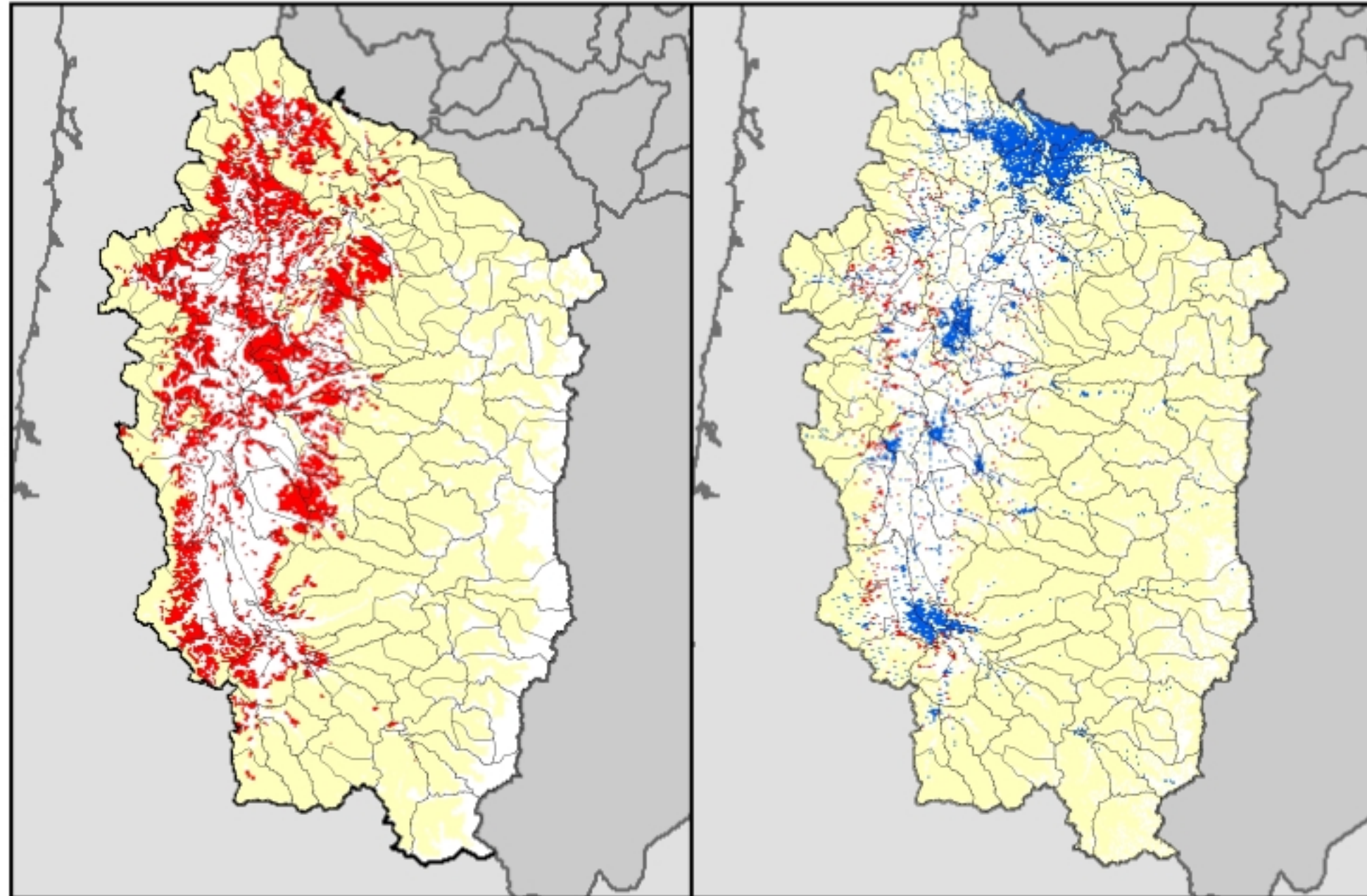


 General Association



Source: University of Washington Hydrologic Information System (HIS)  
Northwest Fisheries Institute 2004

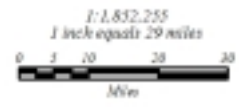




Historic (c. 1850) Rangemap

Historic and Current Rangemaps  
for the  
Western Gray Squirrel  
Willamette Subbasin  
Columbia River Basin  
United States

Current (1999) Rangemap

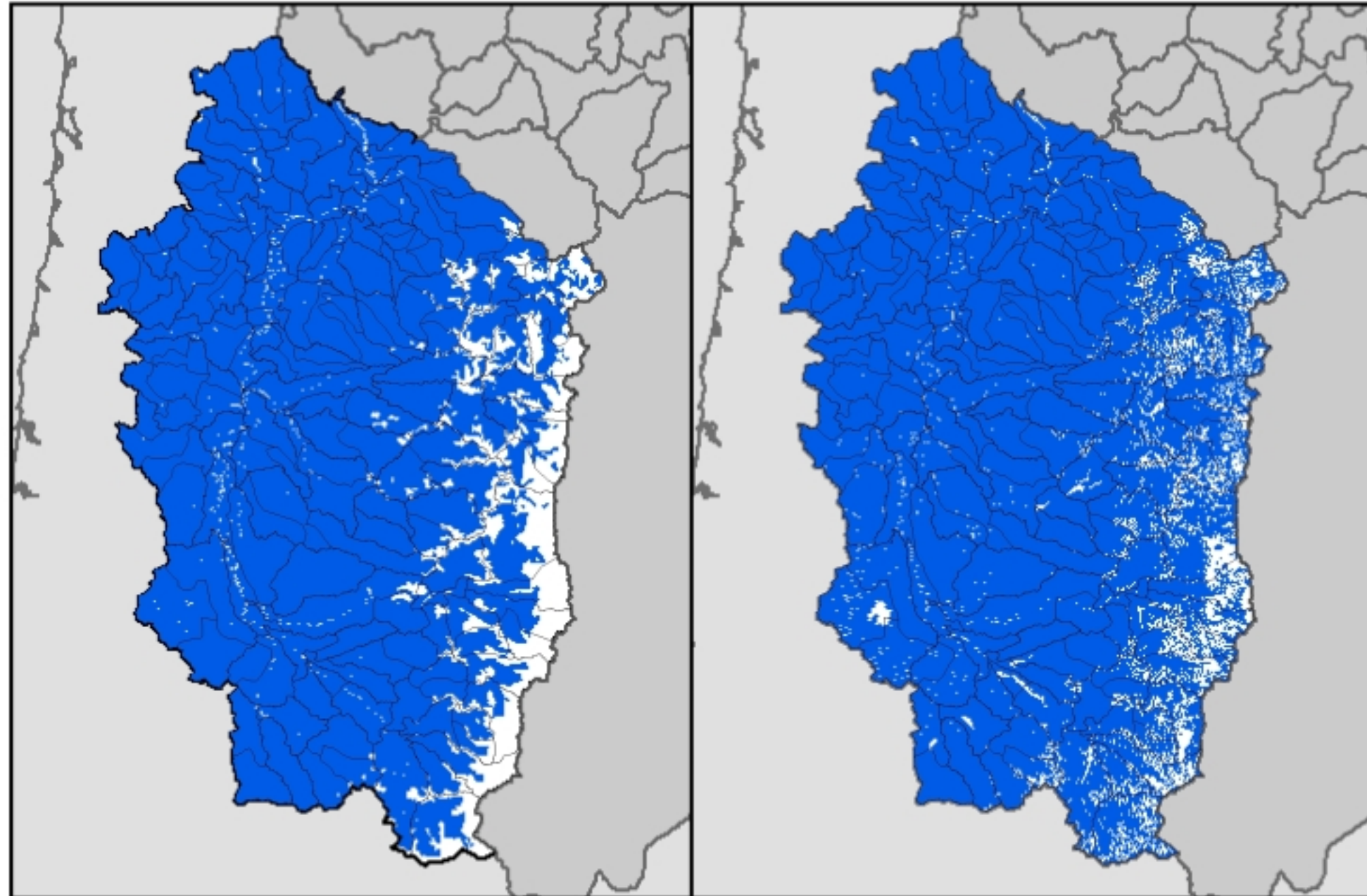


- Presence Indicated
- Close Association
- General Association



Source: University of Washington Information System (2001).  
Northwest Habitat Institute 2001.

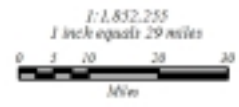




Historic (c. 1850) Rangemap

Historic and Current Rangemaps  
for the  
American Kestrel  
Willamette Subbasin  
Columbia River Basin  
United States

Current (1999) Rangemap



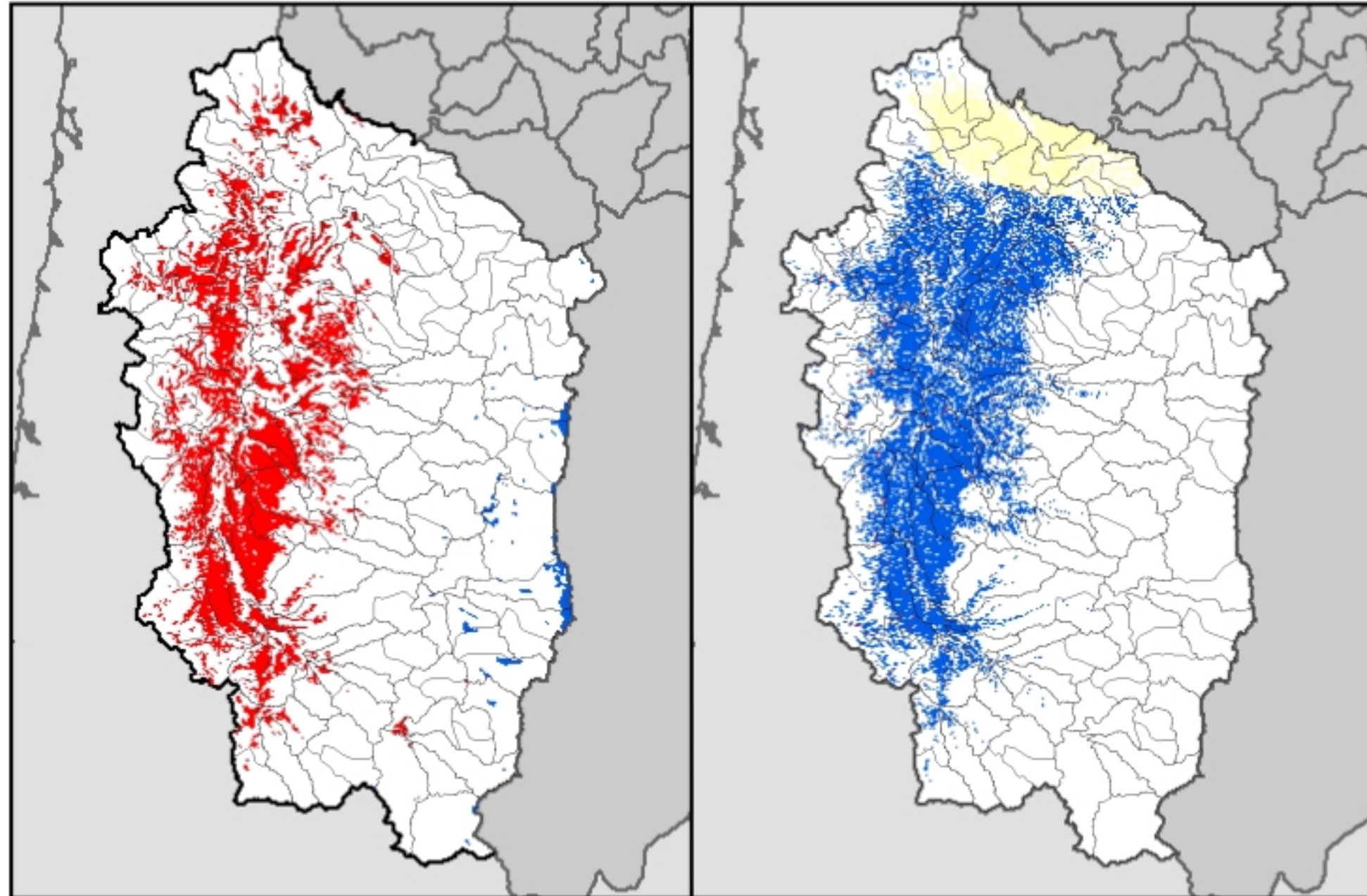
 General Association



Interactive  
Diversity  
Information  
System



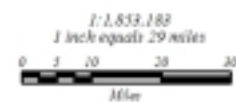
Source: University of Washington Information System (2001).  
Northwest Wildlife Institute 2004.



Historic (c. 1850) Rangemap

Historic and Current Rangemaps  
for the  
Horned Lark  
Willamette Subbasin  
Columbia River Basin  
United States

Current (1999) Rangemap



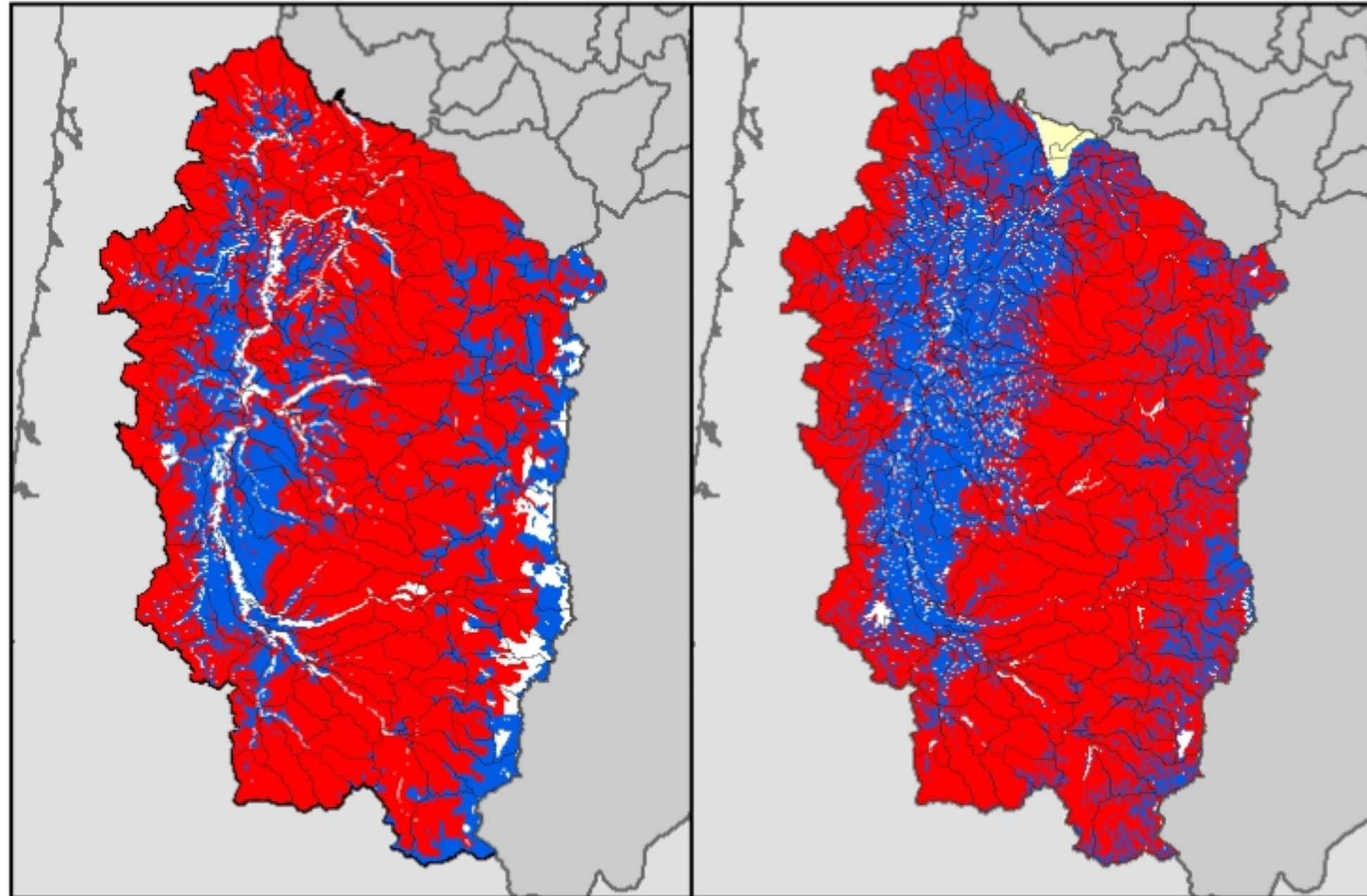
- Presence Indicated
- Close Association
- General Association



Interactive  
Diversity  
Information  
Systems



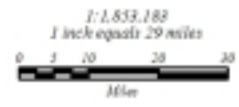
Source: University of Washington Information Systems (2001).  
Northwest National Institute 2001.



Historic (c. 1850) Rangemap

Historic and Current Rangemaps  
for the  
Western Bluebird  
Willamette Subbasin  
Columbia River Basin  
United States

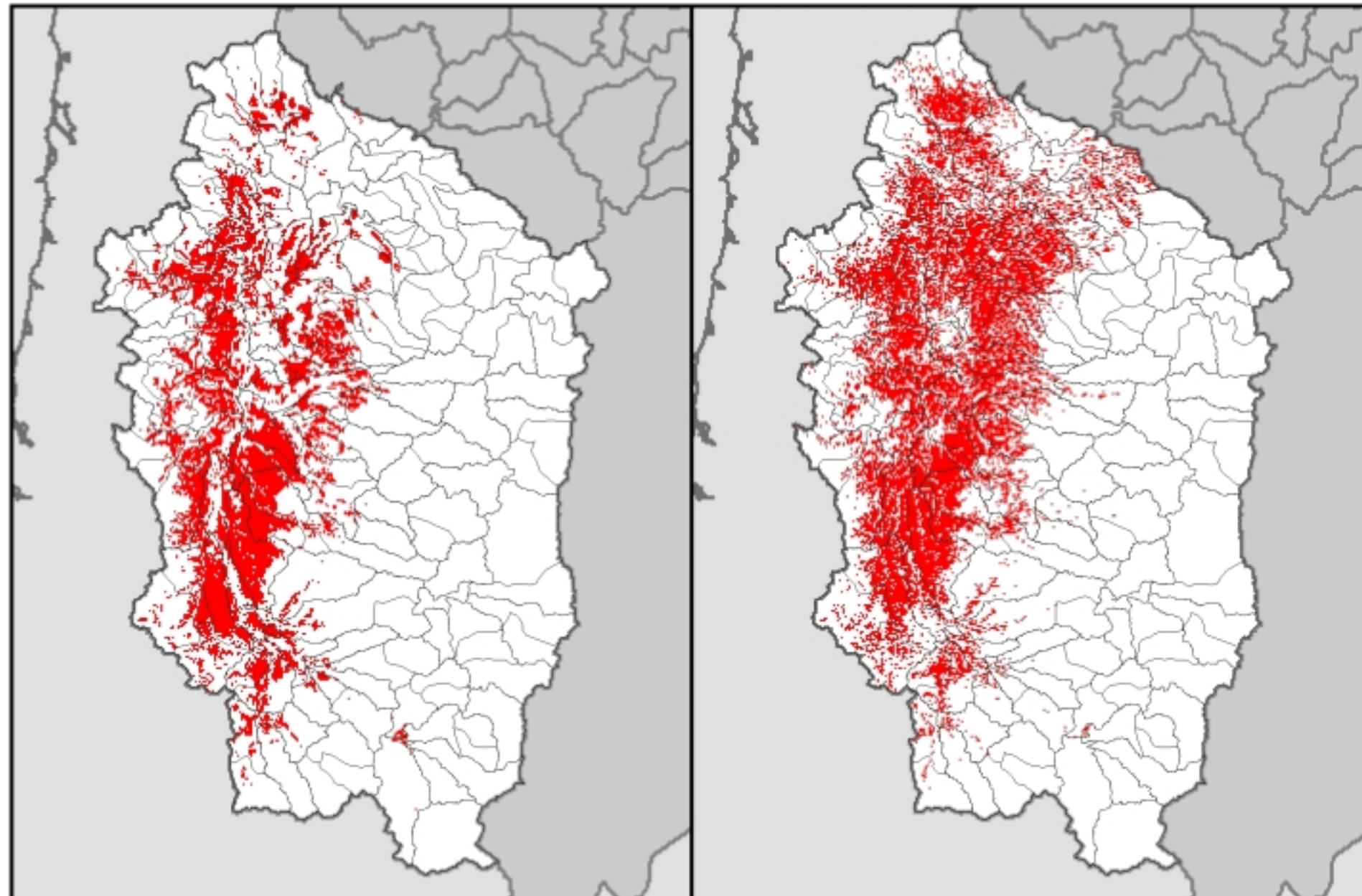
Current (1999) Rangemap



- Presence Indicated
- Close Association
- General Association



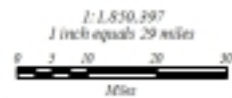
Source: University of Washington, Information Systems (2001).  
Northwest Forestry Institute 2001.



Historic (c. 1850) Rangemap

Historic and Current Rangemaps  
for the  
Vesper Sparrow  
Willamette Subbasin  
Columbia River Basin  
United States

Current (1999) Rangemap



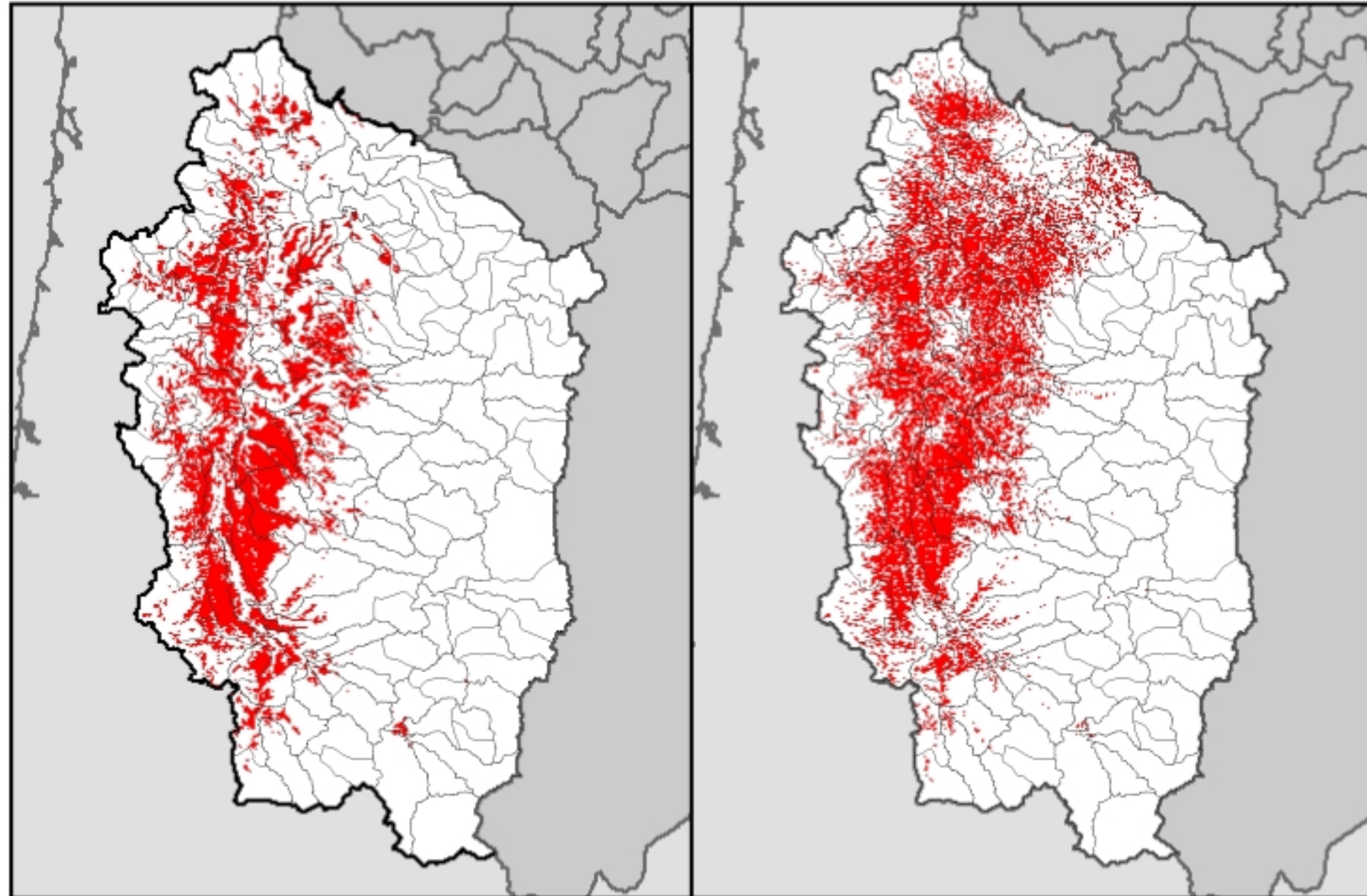
 Close Association



Interactive  
Biodiversity  
Information  
System



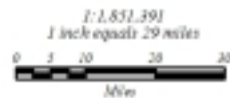
Source: Interactive Biodiversity Information System (IBIS),  
Species and Habitat Database 2014.



Historic (c. 1850) Rangemap

Historic and Current Rangemaps  
for the  
Western Meadowlark  
Willamette Subbasin  
Columbia River Basin  
United States

Current (1999) Rangemap



Interactive  
Diversity  
Information  
Systems



Source: University of Washington Information Systems (2001).  
Northwest Fisheries Science Center, 2001.