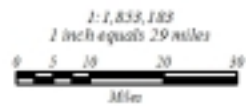


Historic (c. 1850) Rangemap

Historic and Current Rangemaps  
for the  
Townsend's Big-eared Bat  
Willamette Subbasin  
Columbia River Basin  
United States

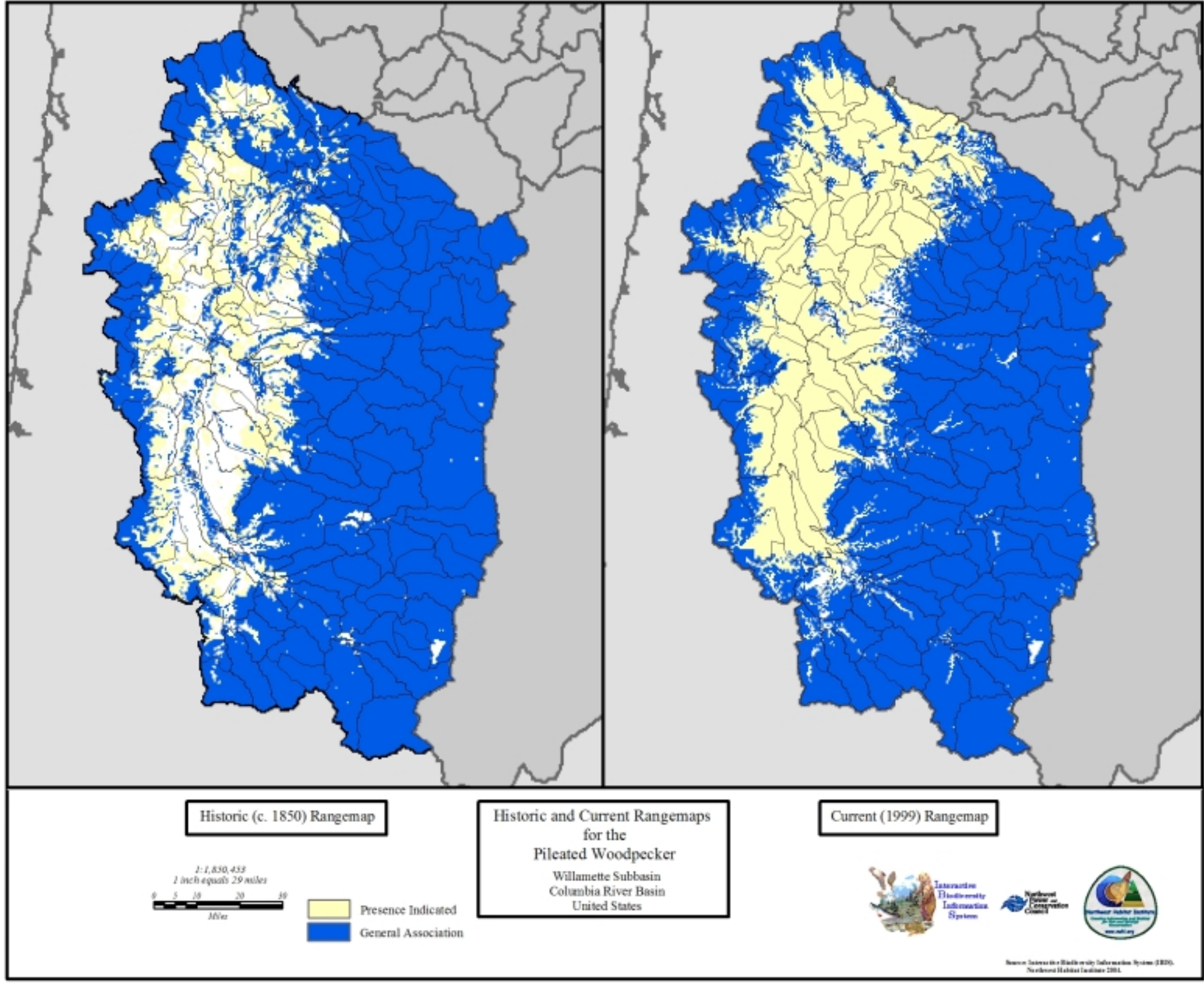
Current (1999) Rangemap

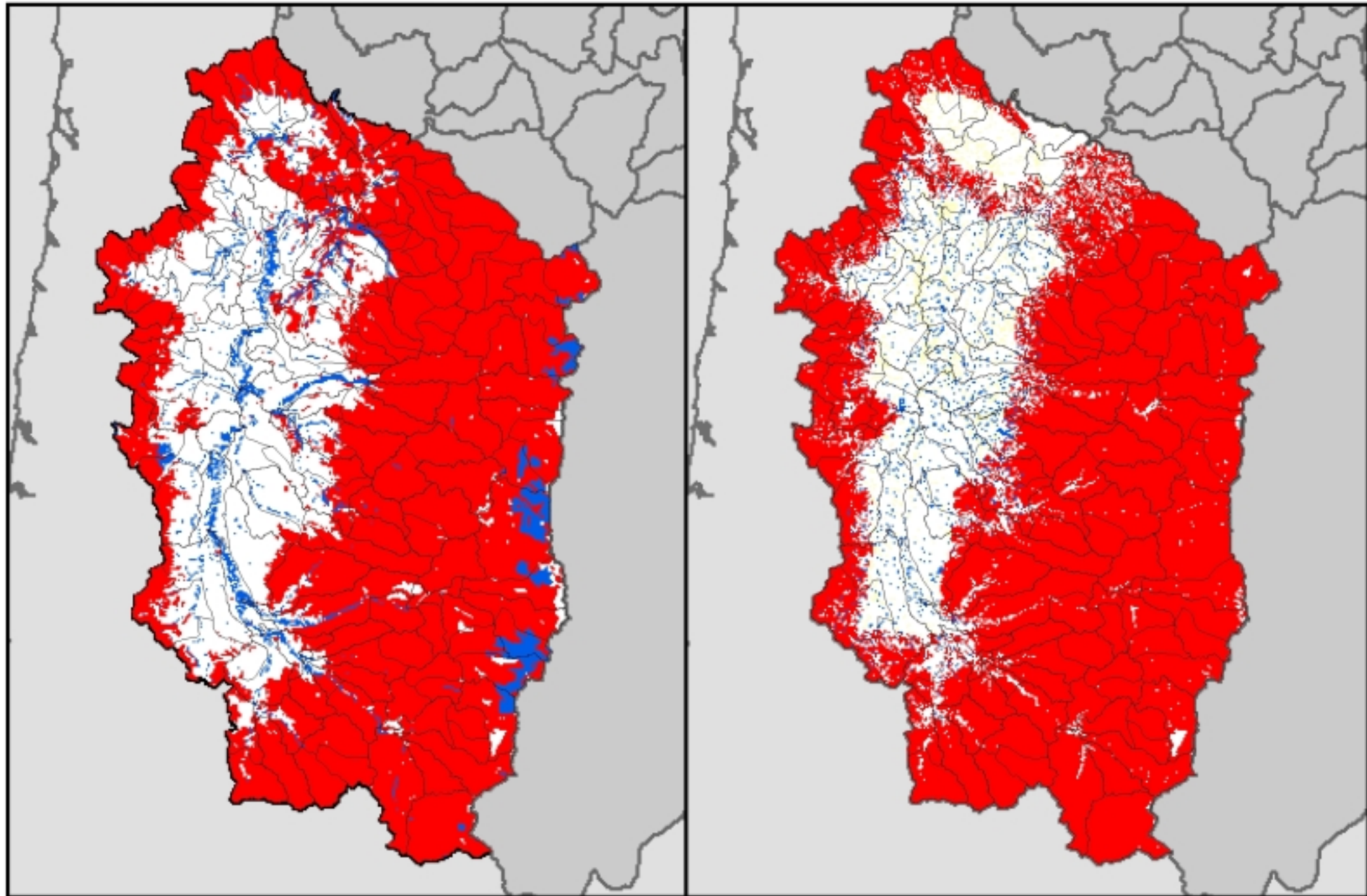


- Presence Indicated
- General Association



Source: Interactive Biodiversity Information System (IBIS).  
Northwest Habitat Locations 2004.





Historic (c. 1850) Rangemap

Historic and Current Rangemaps  
for the  
Olive-Sided Flycatcher  
Willamette Subbasin  
Columbia River Basin  
United States

Current (1999) Rangemap

1:1,852,183  
1 inch equals 29 miles  
0 5 10 20 30  
Miles

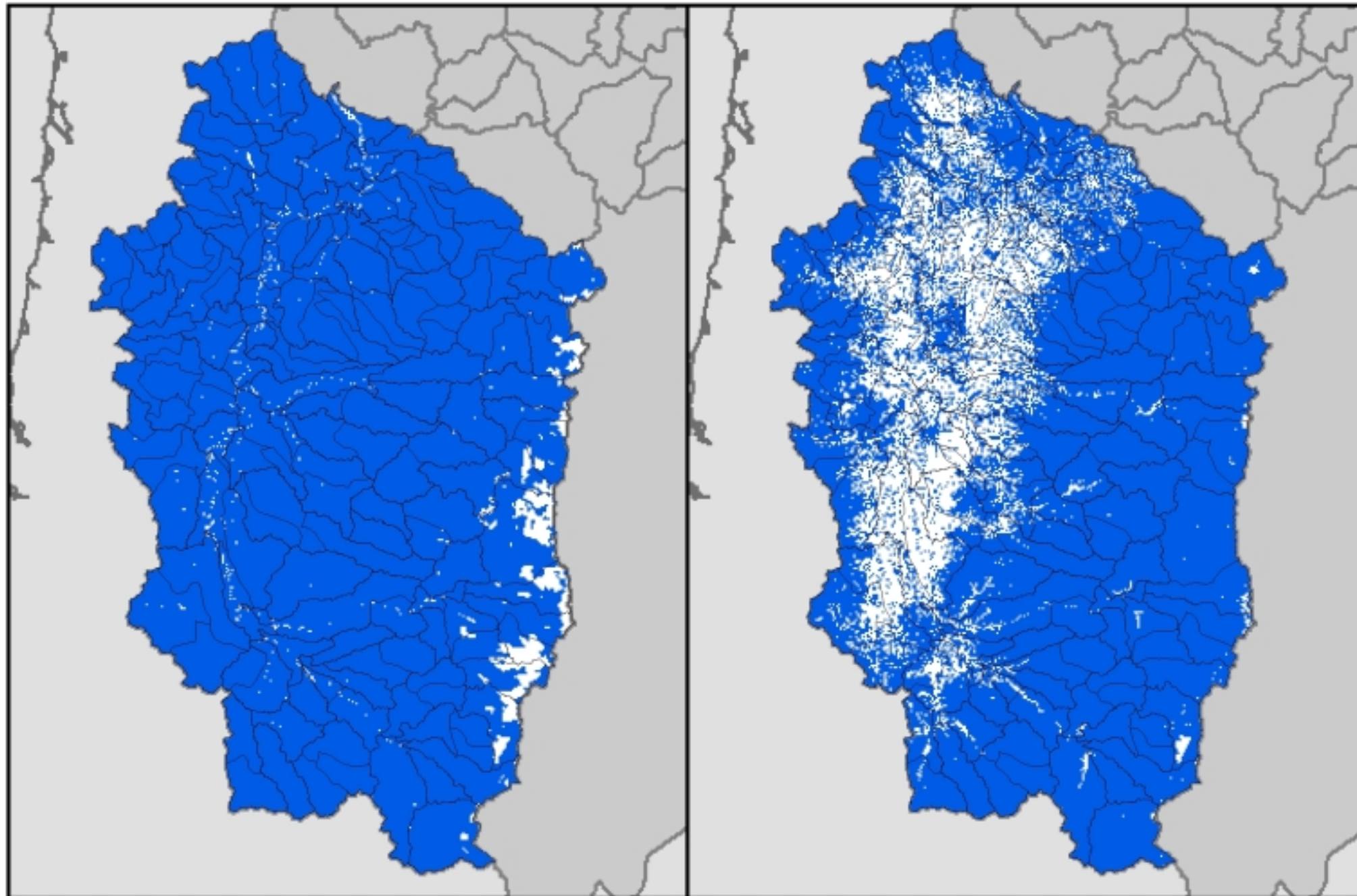
- Presence Indicated
- Close Association
- General Association



Invasive  
Plant Diversity  
Information  
System



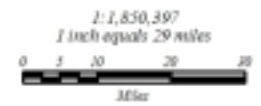
Source: Invasive Plant Diversity Information System (IPDIS),  
Northwest Habitat Institute 2005.



Historic (c. 1850) Rangemap

Historic and Current Rangemaps  
for the  
Vaux's Swift  
Willamette Subbasin  
Columbia River Basin  
United States

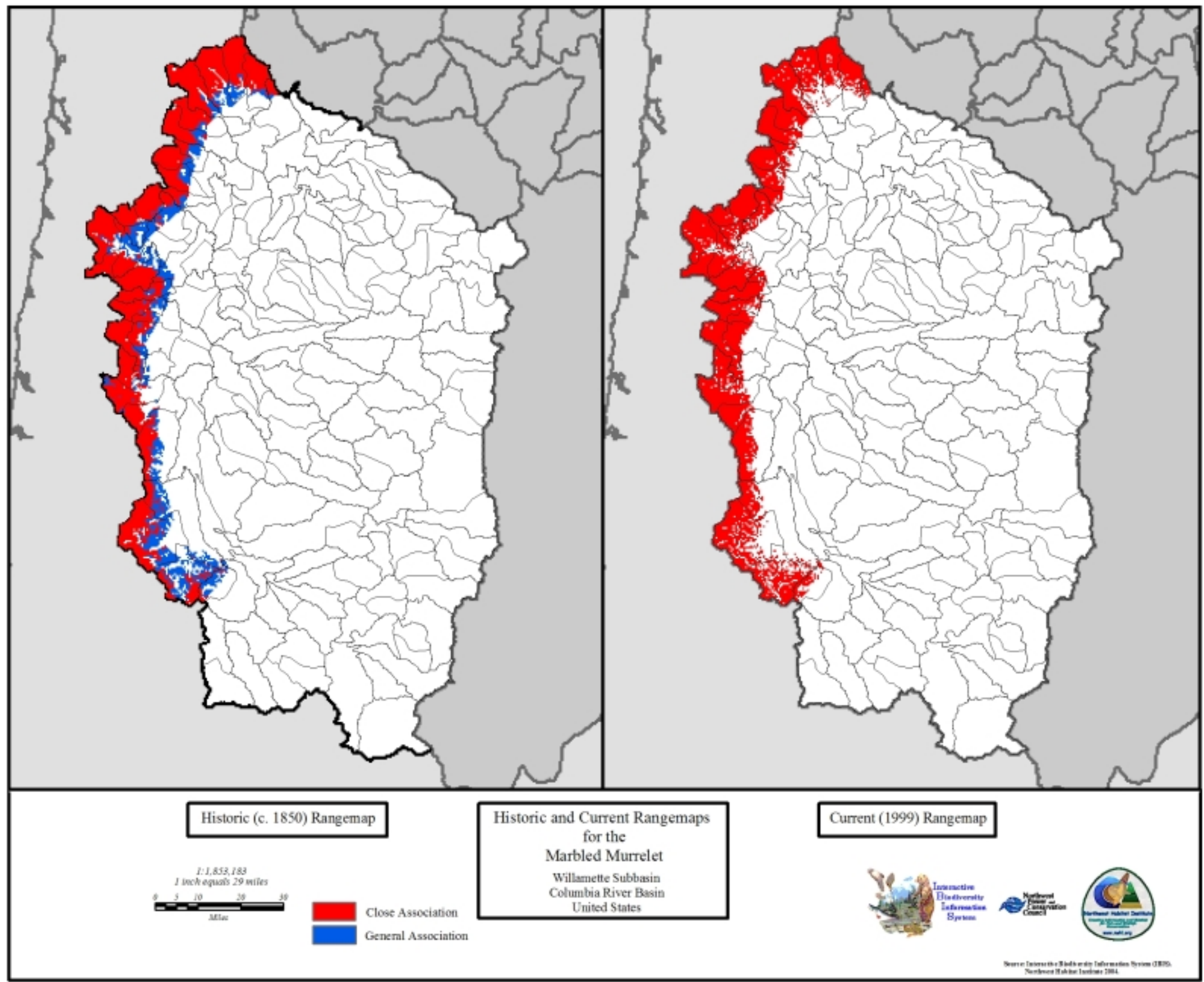
Current (1999) Rangemap

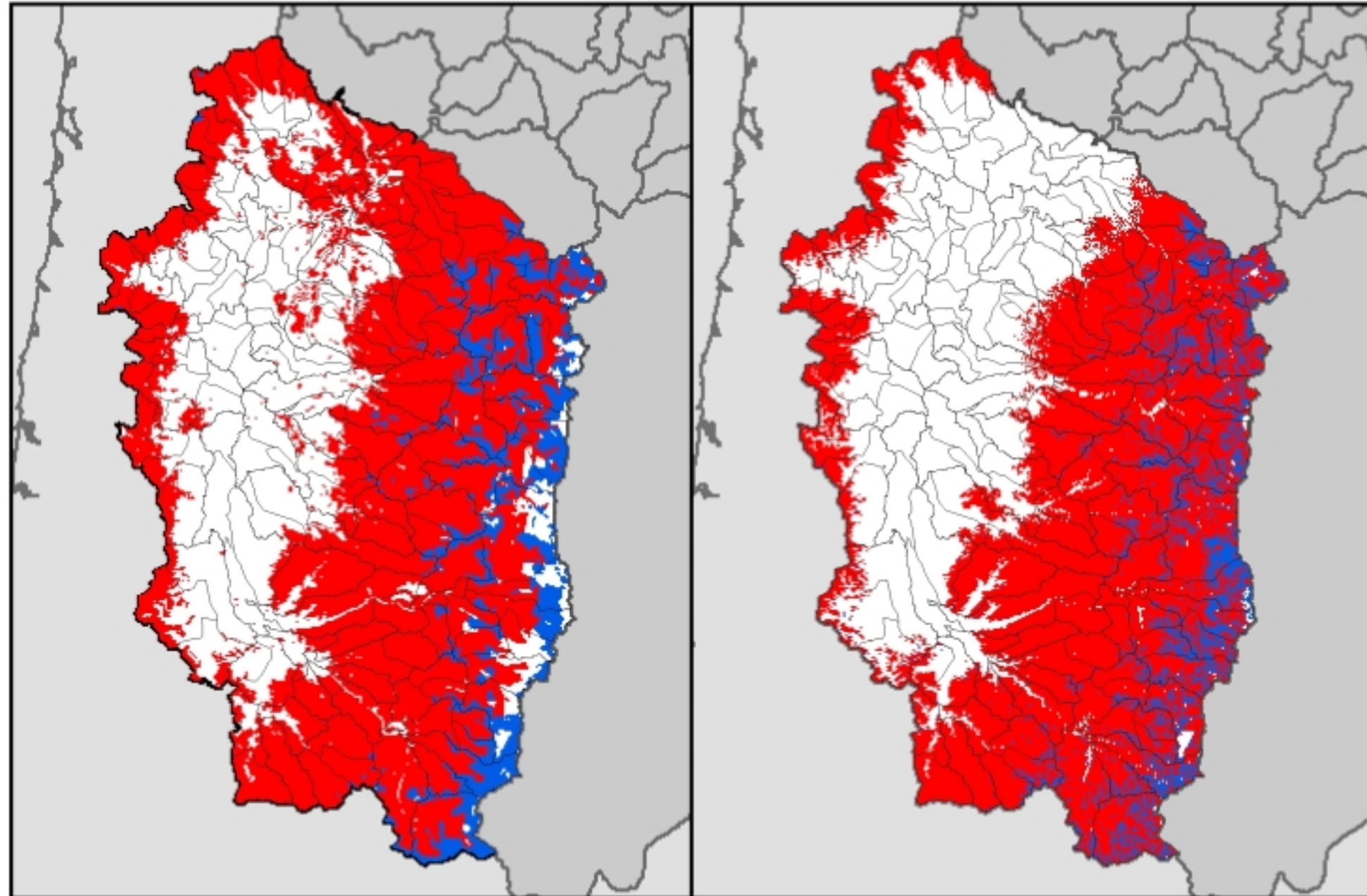


 General Association



Source: Interactive Ecosystem Information System (IEIS).  
See also Habitat Database 2004.

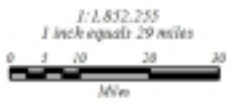




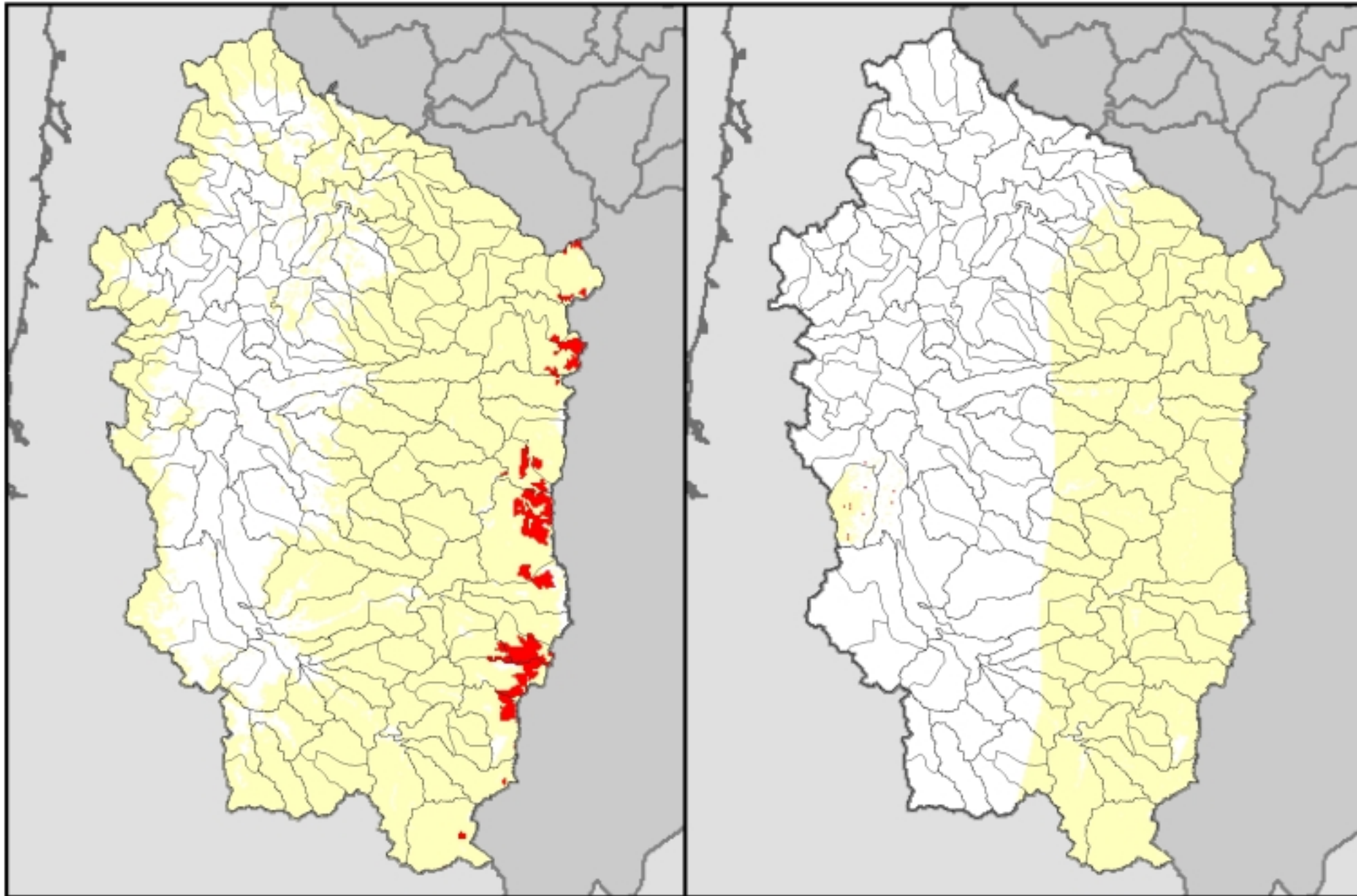
Historic (c. 1850) Rangemap

Historic and Current Rangemaps  
for the  
Spotted Owl  
Willamette Subbasin  
Columbia River Basin  
United States

Current (1999) Rangemap



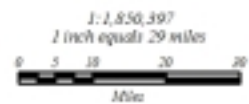
Source: University of Washington, Information Systems (2001).  
Northwest Forestry Institute 2001.





Historic (c. 1850) Rangemap

Historic and Current Rangemaps  
for the  
Great Gray Owl  
Willamette Subbasin  
Columbia River Basin  
United States

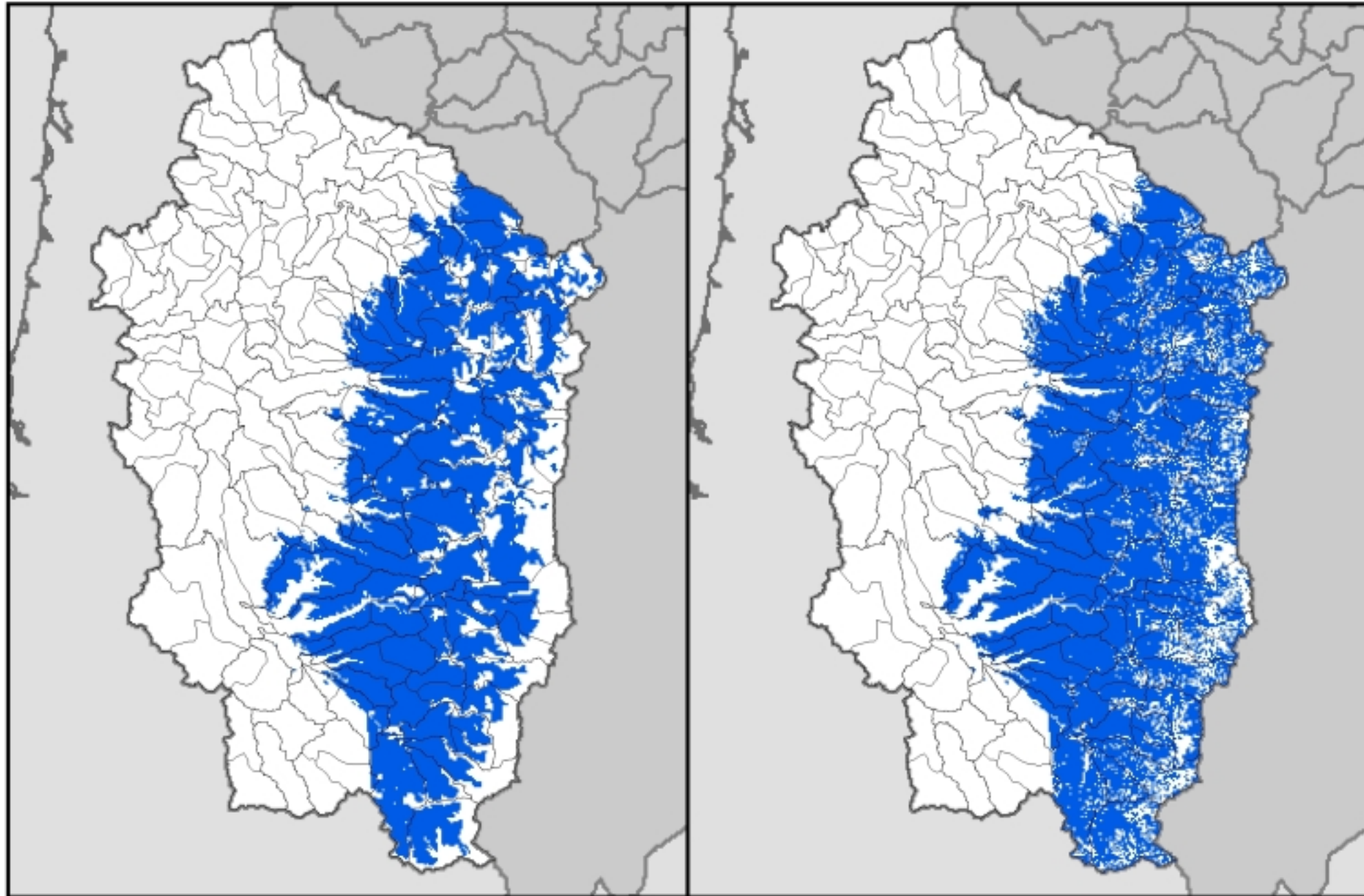
Current (1999) Rangemap



 Presence Indicated  
 Close Association



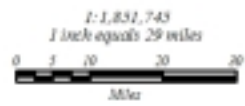
Source: Intertribal Biodiversity Information System (IBIS),  
Northwest Habitat Inventory 2004.



Historic (c. 1850) Rangemap

Historic and Current Rangemaps  
for the  
Oregon Slender Salamander  
Willamette Subbasin  
Columbia River Basin  
United States

Current (1999) Rangemap



 General Association

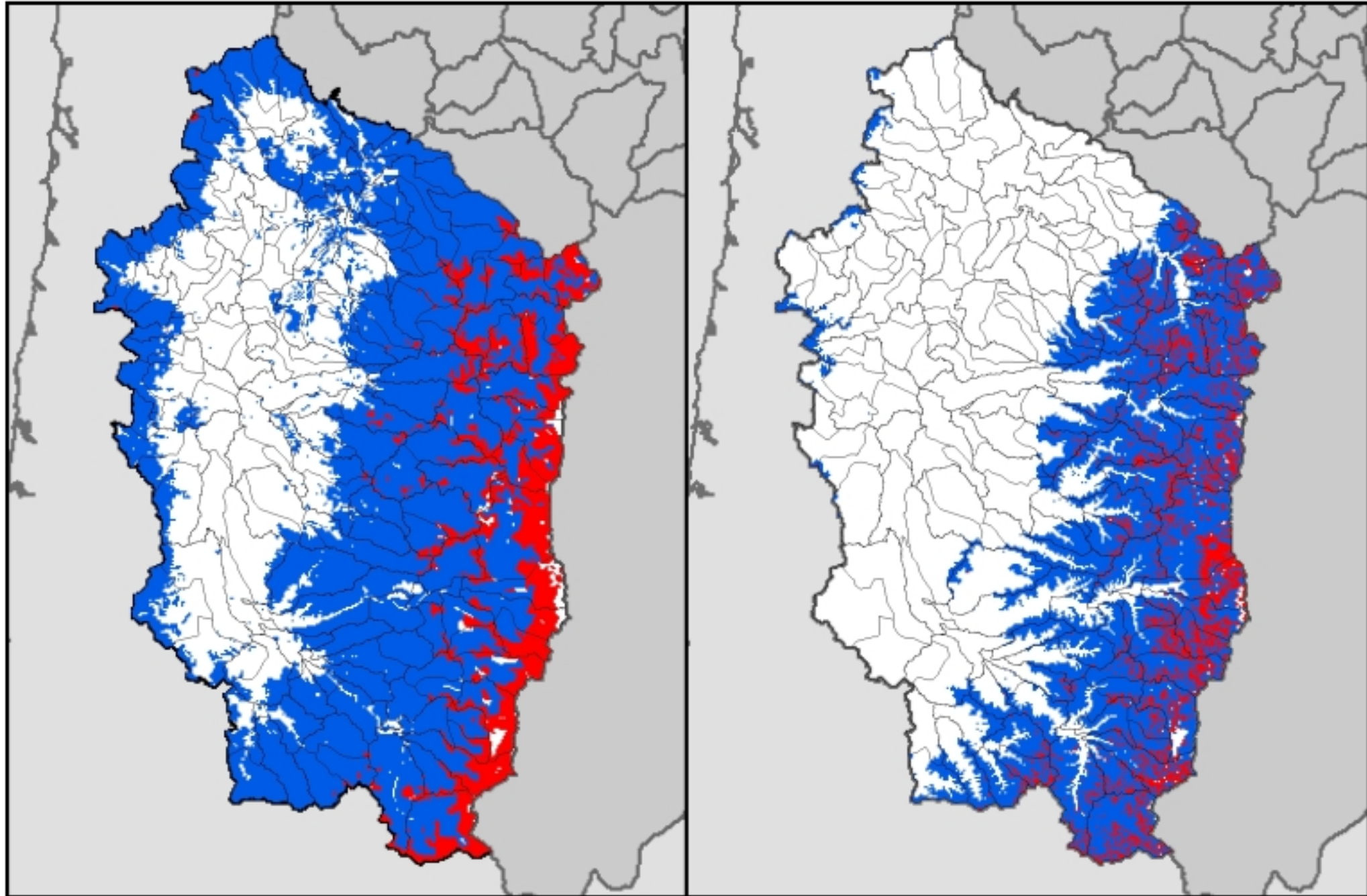


Interstate  
Biodiversity  
Inventories  
System



Source: Interstate Biodiversity Information System (IBIS),  
Northwest Edition (October 2004).

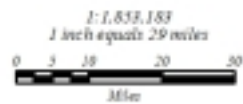






Historic (c. 1850) Rangemap

Historic and Current Rangemaps  
for the  
American Marten  
Willamette Subbasin  
Columbia River Basin  
United States

Current (1999) Rangemap



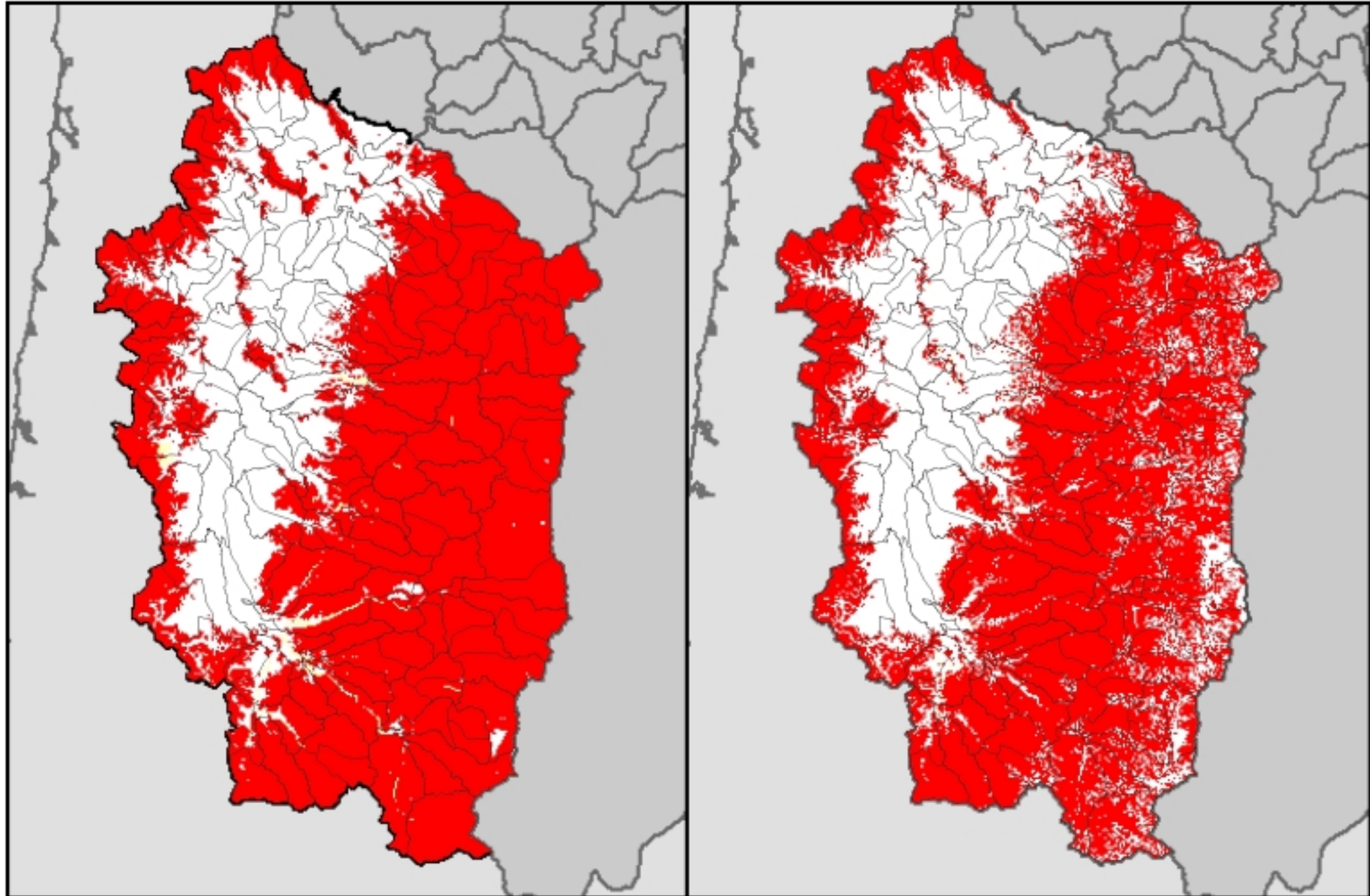
 Close Association  
 General Association



International  
Watersheds  
Information  
System



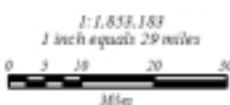
Source: International Watersheds Information System (IWIS),  
Northwest Fish Institute (NFI) 2004.



Historic (c. 1850) Rangemap

Historic and Current Rangemaps  
for the  
Red Tree Vole  
Willamette Subbasin  
Columbia River Basin  
United States

Current (1999) Rangemap



- Presence Indicated
- Close Association



Source: Interactive Ecosystem Information System (IEIS).  
Northwest Water Institute 2004.