

Appendix A – Maps

TABLE OF CONTENTS

Maps for Both the Lower Oregon Columbia Gorge Tributaries and Hood River Subbasin:

- Map 1. Planning Areas
- Map 2. Roads, Trails, and Big Game Winter Range
- Map 3. Stream Corridor Protection
- Map 4. Restoration Projects
- Map 5. Land Protection Status

Maps for Lower Oregon Columbia Gorge Tributaries

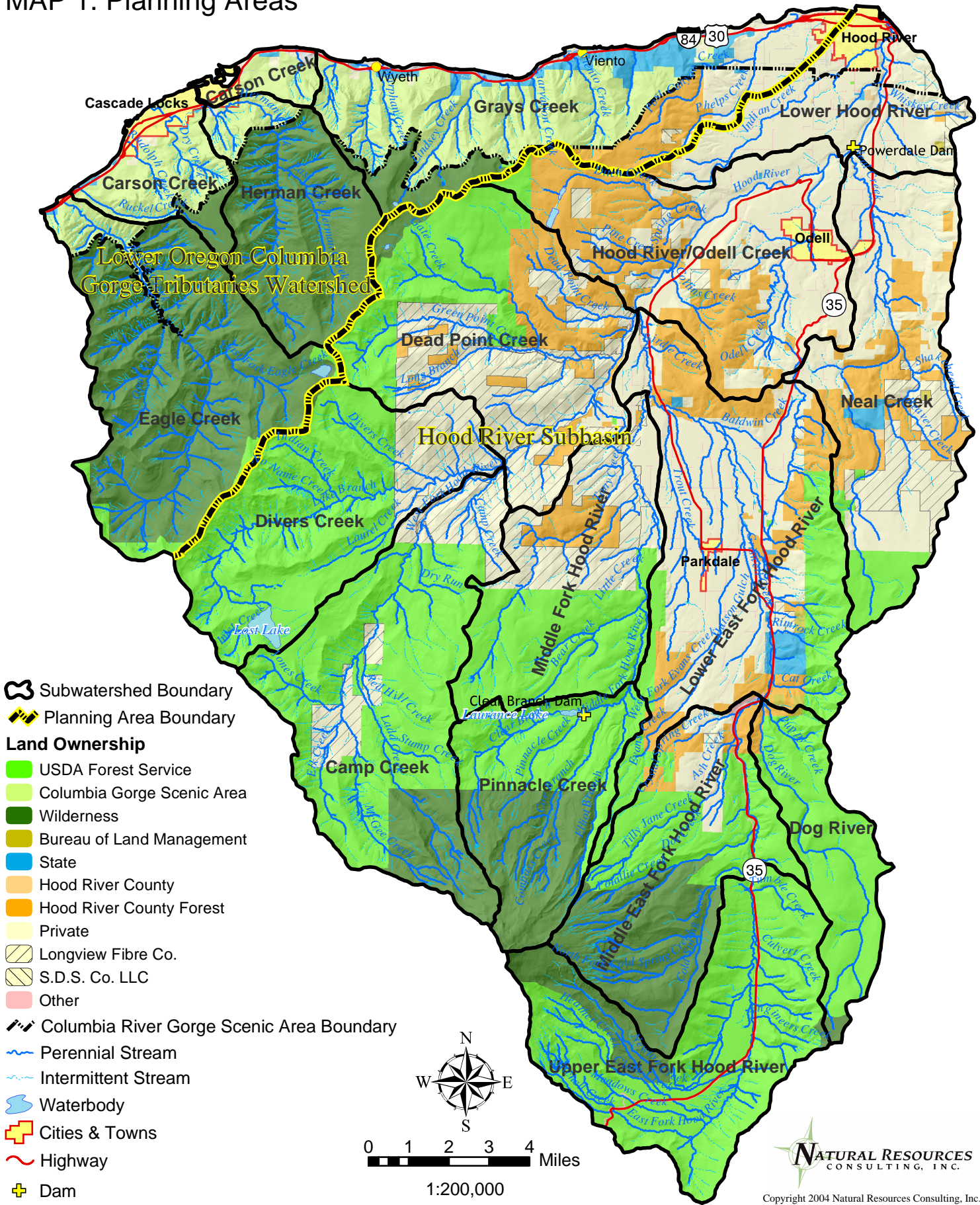
- Map 6. Land Ownership Base Map
- Map 7. Current Wildlife Habitat and Land Cover Type
- Map 7A. Historic Wildlife Habitat and Land Cover Type
- Map 8. Resident Fish Distribution
- Map 9. Anadromous Fish Distribution
- Map 10. Spotted Owl Habitat
- Map 11. National Scenic Area Wildlife Special Habitat Areas

Maps for the Hood River Subbasin

- Map 12. Land Ownership Base Map – Hood River Subbasin
- Map 13. Land Use Zoning – Hood River Subbasin
- Map 14. Resident Fish Distribution – Hood River Subbasin
- Map 15. Anadromous Fish Distribution – Hood River Subbasin
- Map 16. Current Wildlife Habitat and Land Cover Type
- Map 16A. Historic Wildlife Habitat and Land Cover Type
- Map 17. Spotted Owl Habitat
- Map 18. Developed and Undeveloped Residential and Resource-Zoned Lands
in 2004

Non-Numbered Maps: IBIS Land Cover Change Analysis Maps (4)

MAP 1. Planning Areas

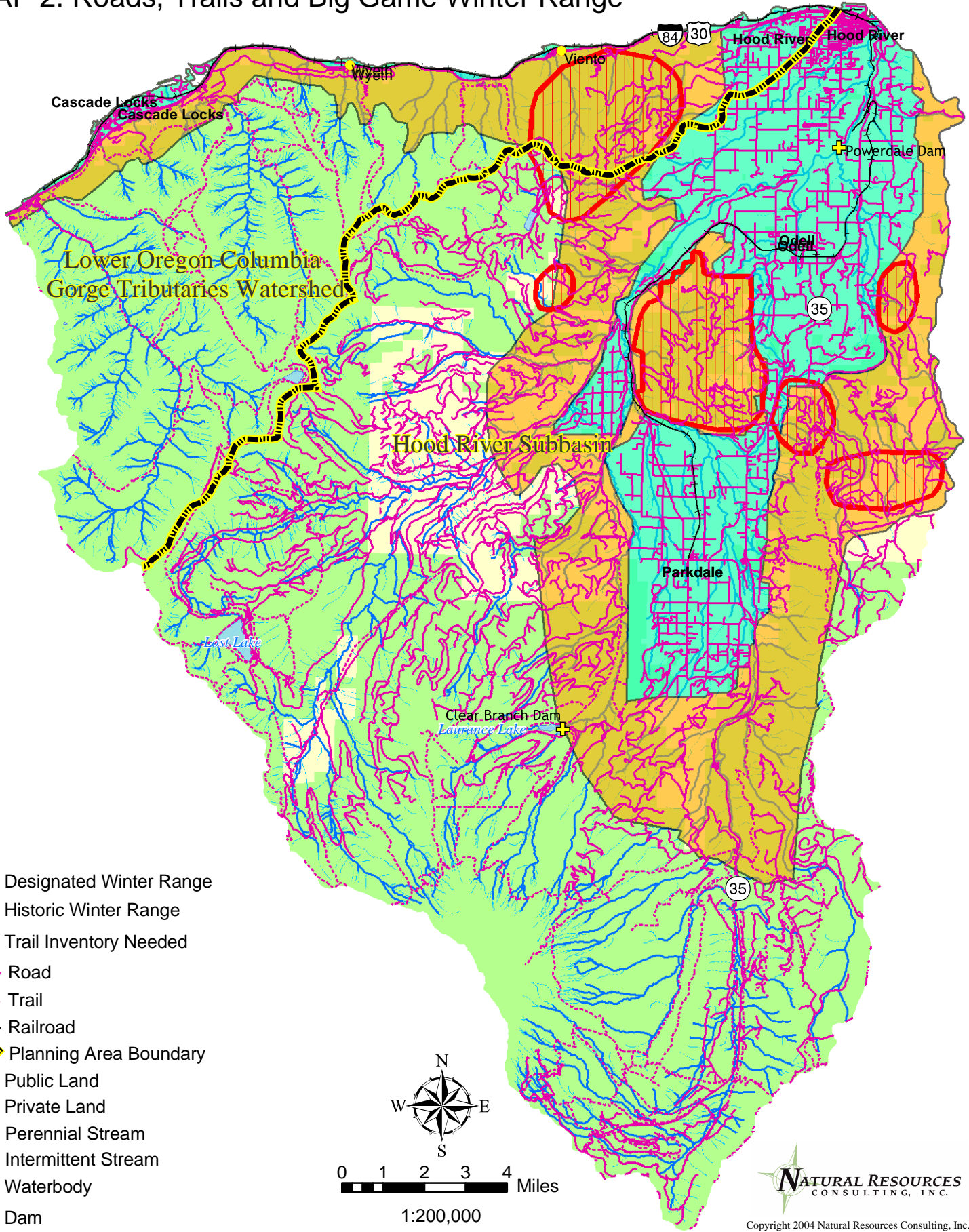


Land Ownership Source: Hood River County
 Subwatershed Source: Regional Ecosystem Office, USDA Forest Service, USDI Bureau of Land Management and USDA Natural Resources Conservation Service, December 23, 2002

Disclaimer: This map was compiled by Natural Resources Consulting, Inc. (Bend, OR) using a variety of data sources. Data is believed to be accurate; however, a degree of error is inherent in all maps. This map is distributed "AS-IS" without warranties of any kind, either expressed or implied, including but not limited to warranties of suitability to a particular purpose or use. This map is intended for use only at the published scale. Reproduction is prohibited.

NATURAL RESOURCES
 CONSULTING, INC.
 Copyright 2004 Natural Resources Consulting, Inc.

MAP 2. Roads, Trails and Big Game Winter Range



- Designated Winter Range
- Historic Winter Range
- Trail Inventory Needed
- Road
- Trail
- Railroad
- Planning Area Boundary
- Public Land
- Private Land
- Perennial Stream
- Intermittent Stream
- Waterbody
- Dam



0 1 2 3 4 Miles

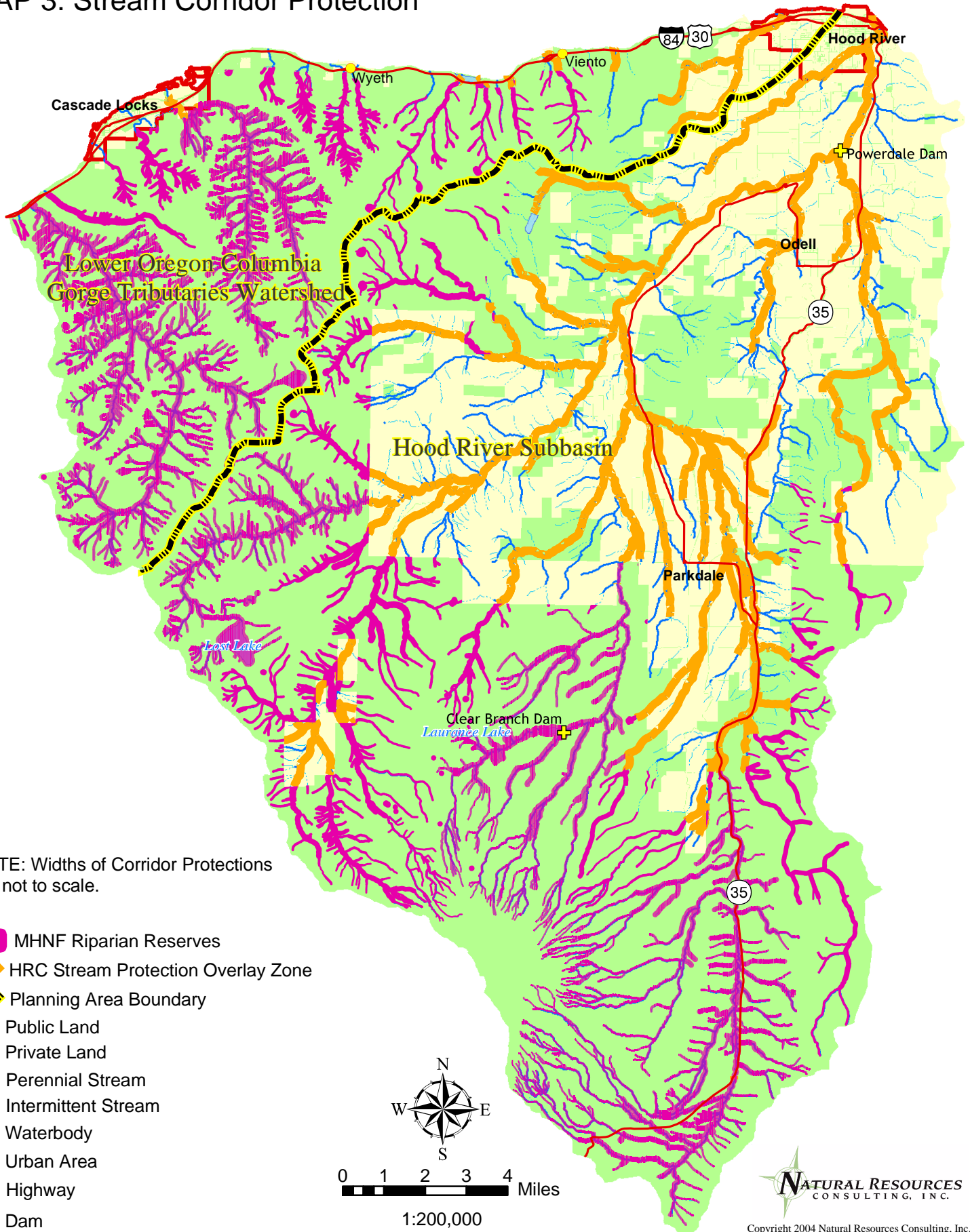
1:200,000

NATURAL RESOURCES CONSULTING, INC.
Copyright 2004 Natural Resources Consulting, Inc.


Road and Trail Source: Hood River County and Mt. Hood National Forest

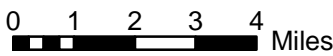
Disclaimer: This map was compiled by Natural Resources Consulting, Inc. (Bend, OR) using a variety of data sources. Data is believed to be accurate; however, a degree of error is inherent in all maps. This map is distributed "AS-IS" without warranties of any kind, either expressed or implied, including but not limited to warranties of suitability to a particular purpose or use. This map is intended for use only at the published scale. Reproduction is prohibited.

MAP 3. Stream Corridor Protection



NOTE: Widths of Corridor Protections are not to scale.

-  MHNH Riparian Reserves
-  HRC Stream Protection Overlay Zone
-  Planning Area Boundary
-  Public Land
-  Private Land
-  Perennial Stream
-  Intermittent Stream
-  Waterbody
-  Urban Area
-  Highway
-  Dam



1:200,000

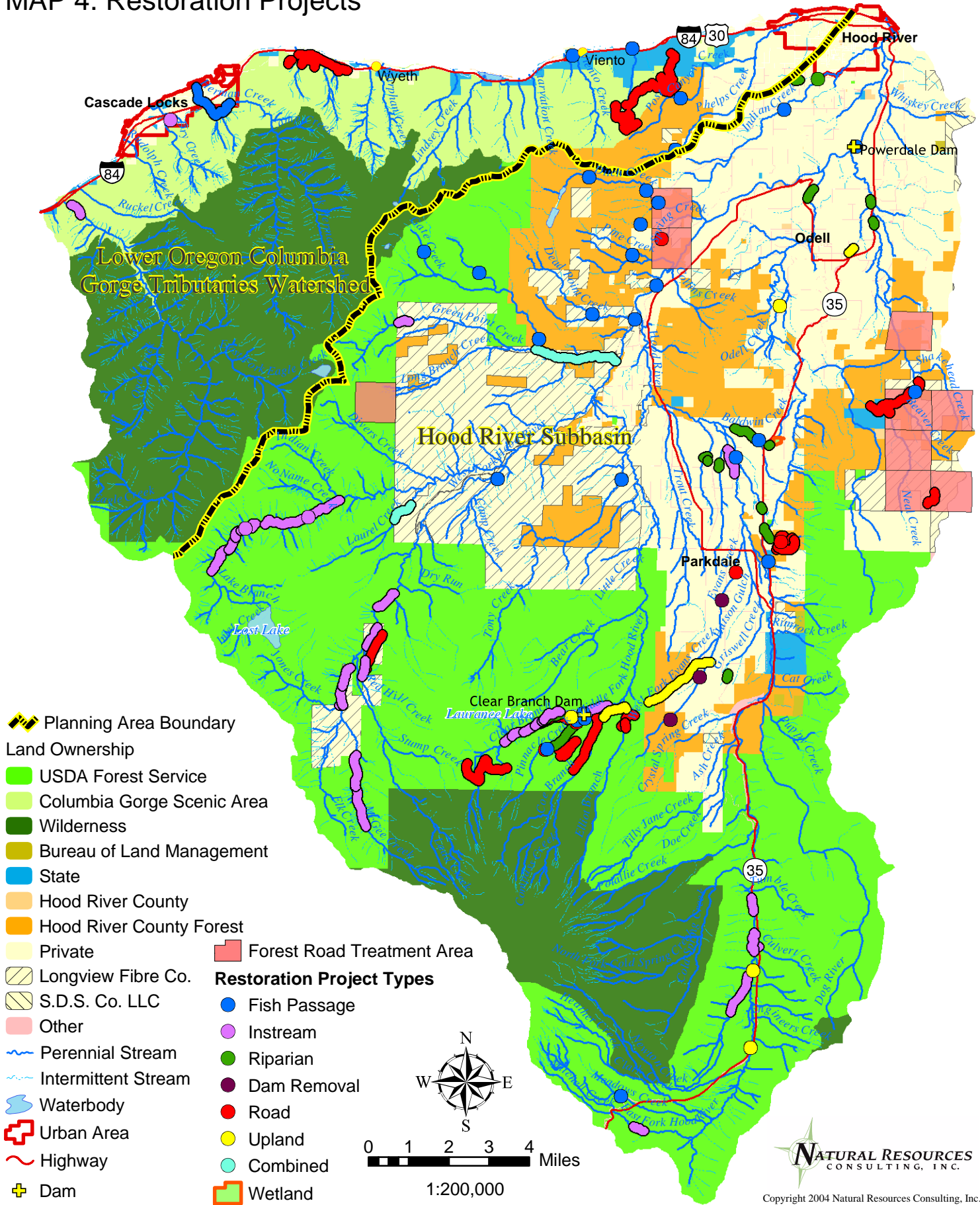


Copyright 2004 Natural Resources Consulting, Inc.

Data Source: Hood River County and Mt. Hood National Forest

Disclaimer: This map was compiled by Natural Resources Consulting, Inc. (Bend, OR) using a variety of data sources. Data is believed to be accurate; however, a degree of error is inherent in all maps. This map is distributed "AS-IS" without warranties of any kind, either expressed or implied, including but not limited to warranties of suitability to a particular purpose or use. This map is intended for use only at the published scale. Reproduction is prohibited.

MAP 4. Restoration Projects

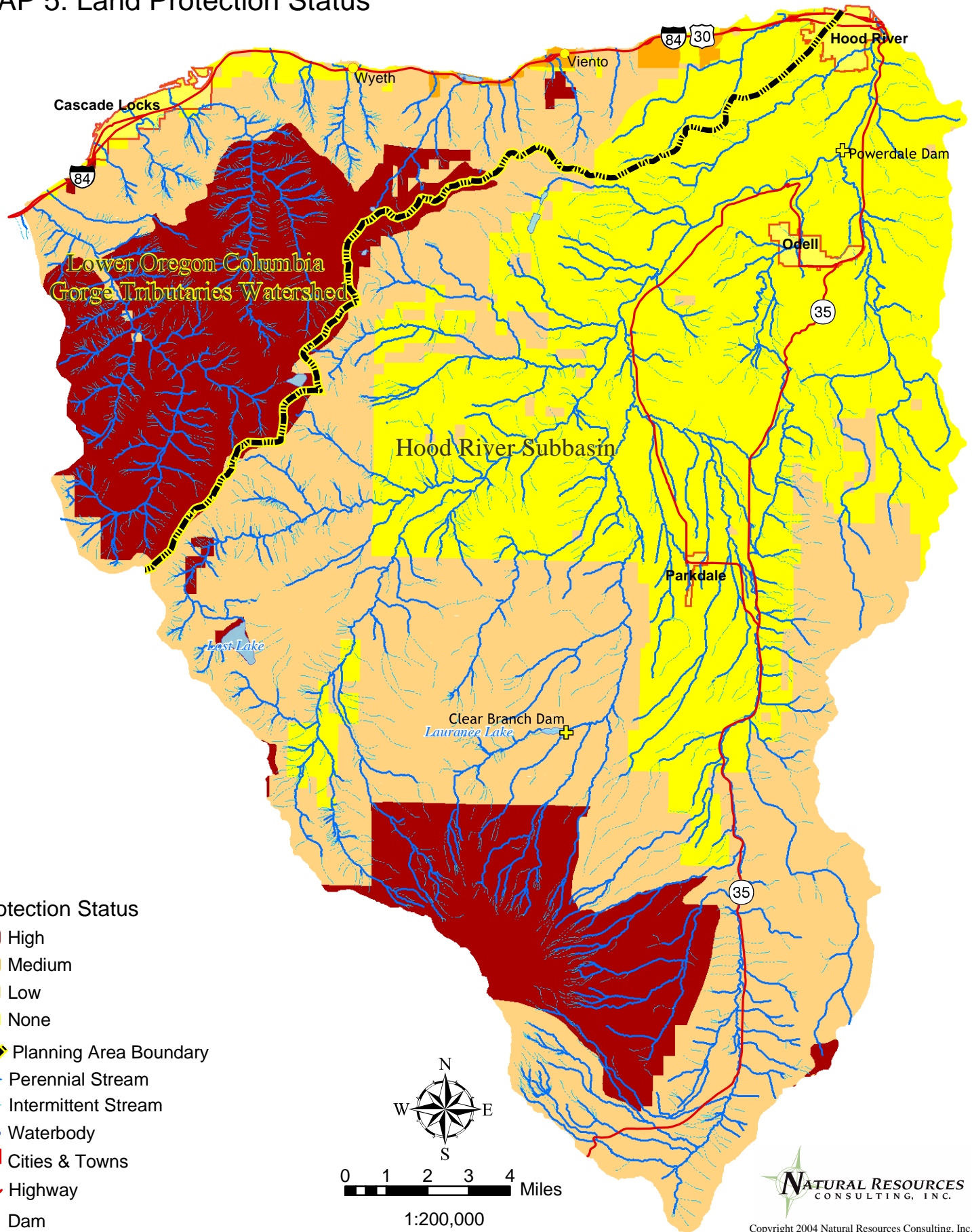


Land Ownership Source: Hood River County
 Restoration Projects Source: Hood River Watershed Group, Holly Cocoli

Disclaimer: This map was compiled by Natural Resources Consulting, Inc. (Bend, OR) using a variety of data sources. Data is believed to be accurate; however, a degree of error is inherent in all maps. This map is distributed "AS-IS" without warranties of any kind, either expressed or implied, including but not limited to warranties of suitability to a particular purpose or use. This map is intended for use only at the published scale. Reproduction is prohibited.

NATURAL RESOURCES
 CONSULTING, INC.
 Copyright 2004 Natural Resources Consulting, Inc.

MAP 5. Land Protection Status



Protection Status

- High
- Medium
- Low
- None
- Planning Area Boundary
- Perennial Stream
- Intermittent Stream
- Waterbody
- Cities & Towns
- Highway
- Dam



0 1 2 3 4 Miles

1:200,000



Copyright 2004 Natural Resources Consulting, Inc.

Source: IBIS. 2003. Interactive Biodiversity Information System (<http://ibis.nwhi.org>), Northwest Habitat Institute, Corvallis, OR. and Northwest Power and Conservation Council

Disclaimer: This map was compiled by Natural Resources Consulting, Inc. (Bend, OR) using a variety of data sources. Data is believed to be accurate; however, a degree of error is inherent in all maps. This map is distributed "AS-IS" without warranties of any kind, either expressed or implied, including but not limited to warranties of suitability to a particular purpose or use. This map is intended for use only at the published scale. Reproduction is prohibited.