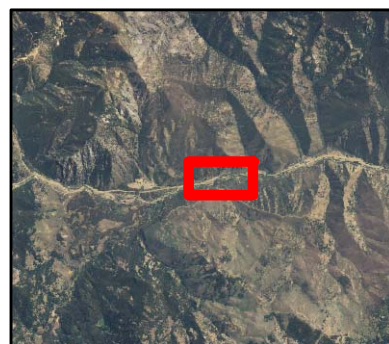
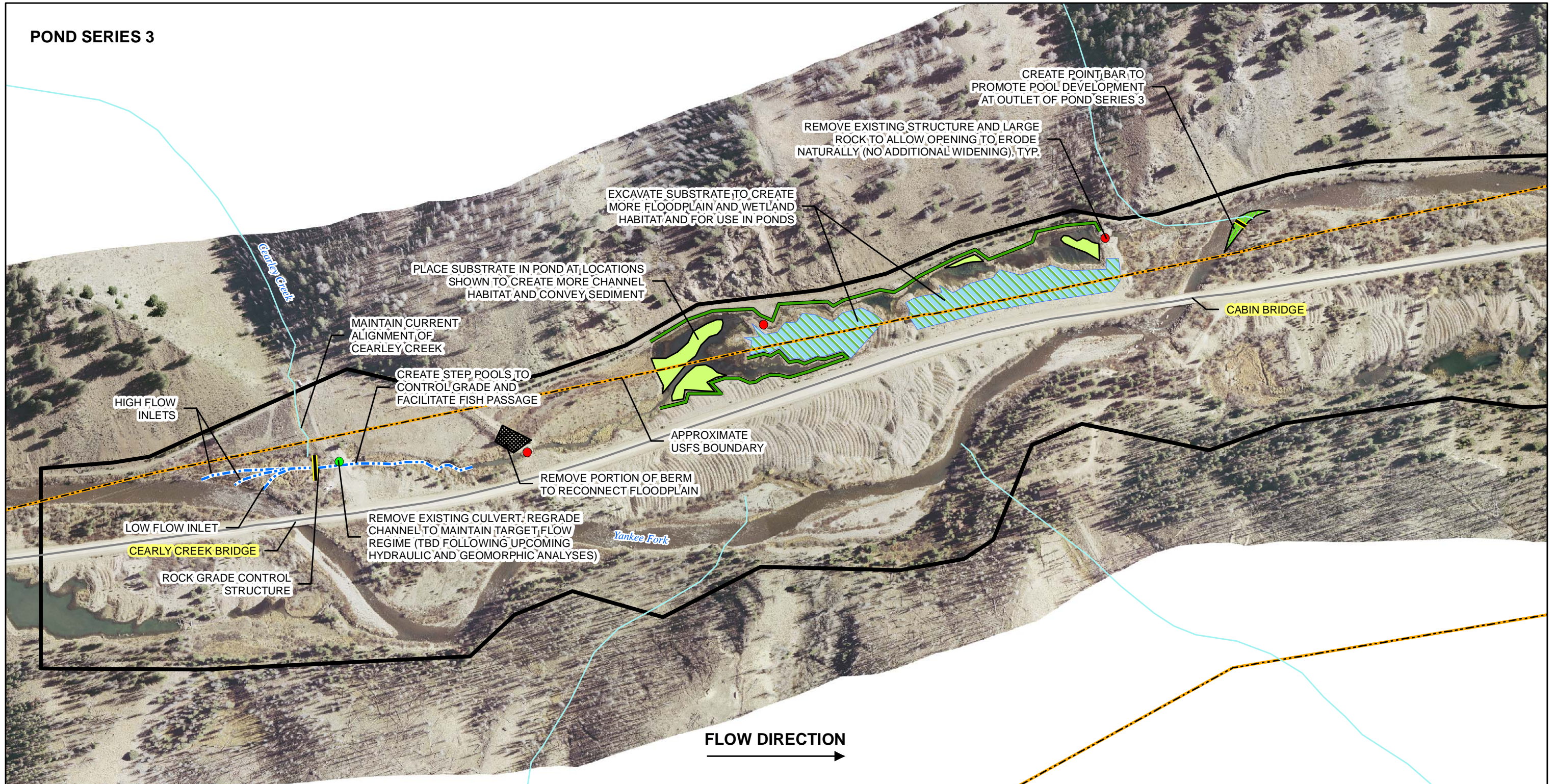


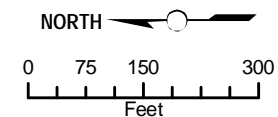
POND SERIES 3



- | | |
|---|--|
| <p>BASE</p> <ul style="list-style-type: none"> Approximate USFS Boundary Yankee Fork Road NHD Flowline 2D Hydraulic Model Domain <p>PROPOSED PROJECT ELEMENTS</p> <ul style="list-style-type: none"> Removal of Existing Culvert Removal of Existing Control Structure Rock Grade Control Structure | <p>PROPOSED PROJECT ELEMENTS (CONT.)</p> <ul style="list-style-type: none"> Channel Modification (horizontal and/or vertical realignment) Wood Habitat Structure/Riparian Vegetation Establishment Riprap Channel Fill Alcove Pond Fill Tiered Floodplain Bench Creation/Borrow Source Berm Removal |
|---|--|

Notes:

1. Ownership boundaries are approximate.
2. Pond series habitat structures constructed of wood and possibly rock to be incorporated following upcoming hydraulic and geomorphic analyses.
3. Strategically placed floodplain benches will be used to increase the natural recruitment potential for riparian species.
4. Supplemental riparian plantings will be incorporated as appropriate.



Source: Aerial (CH2M HILL 2007). Ownership Boundary (BLM 2008); Roads (StreetMap USA and USFS); NHD (USGS); 2D Model Domain (CH2M HILL 2011); and Proposed Project Elements (CH2M HILL and Reclamation 2011).

Exhibit 1. Pond Series 3 Conceptual Restoration Plan
 Yankee Fork of Salmon River
 DRAFT 11/9/11