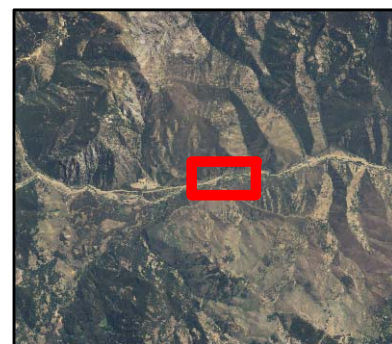
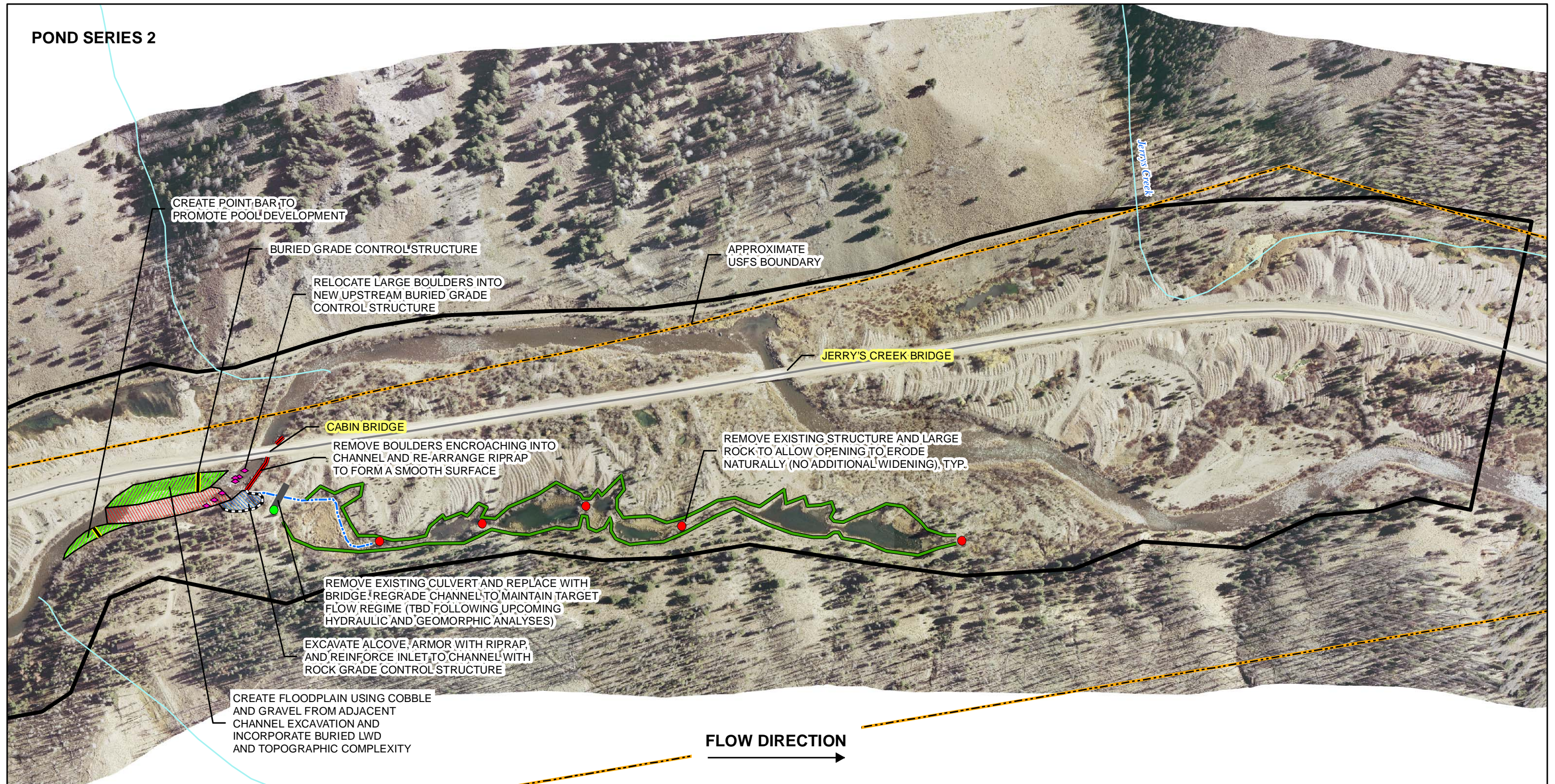
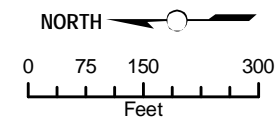


POND SERIES 2



BASE		PROPOSED PROJECT ELEMENTS (CONT.)	
	Approximate USFS Boundary		Channel Modification (horizontal and/or vertical realignment)
	Yankee Fork Road		Wood Habitat Structure/Riparian Vegetation Establishment
	NHD Flowline		Bridge or Box Culvert
	2D Hydraulic Model Domain		Bank Regrading
PROPOSED PROJECT ELEMENTS			Relocate Large Boulder
	Removal of Existing Culvert		Riprap
	Removal of Existing Control Structure		Channel Excavation
	Rock Grade Control Structure		Channel Fill
			Alcove

Notes:
 1. Ownership boundaries are approximate.
 2. Pond series habitat structures constructed of wood and possibly rock to be incorporated following upcoming hydraulic and geomorphic analyses.
 3. Strategically placed floodplain benches will be used to increase the natural recruitment potential for riparian species.
 4. Supplemental riparian plantings will be incorporated as appropriate.



Source: Aerial (CH2M HILL 2007). Ownership Boundary (BLM 2008); Roads (StreetMap USA and USFS); NHD (USGS); 2D Model Domain (CH2M HILL 2011); and Proposed Project Elements (CH2M HILL and Reclamation 2011).

Exhibit 2. Pond Series 2 Conceptual Restoration Plan
 Yankee Fork of Salmon River
 DRAFT 11/9/11