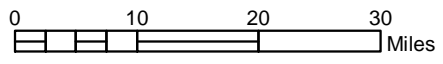
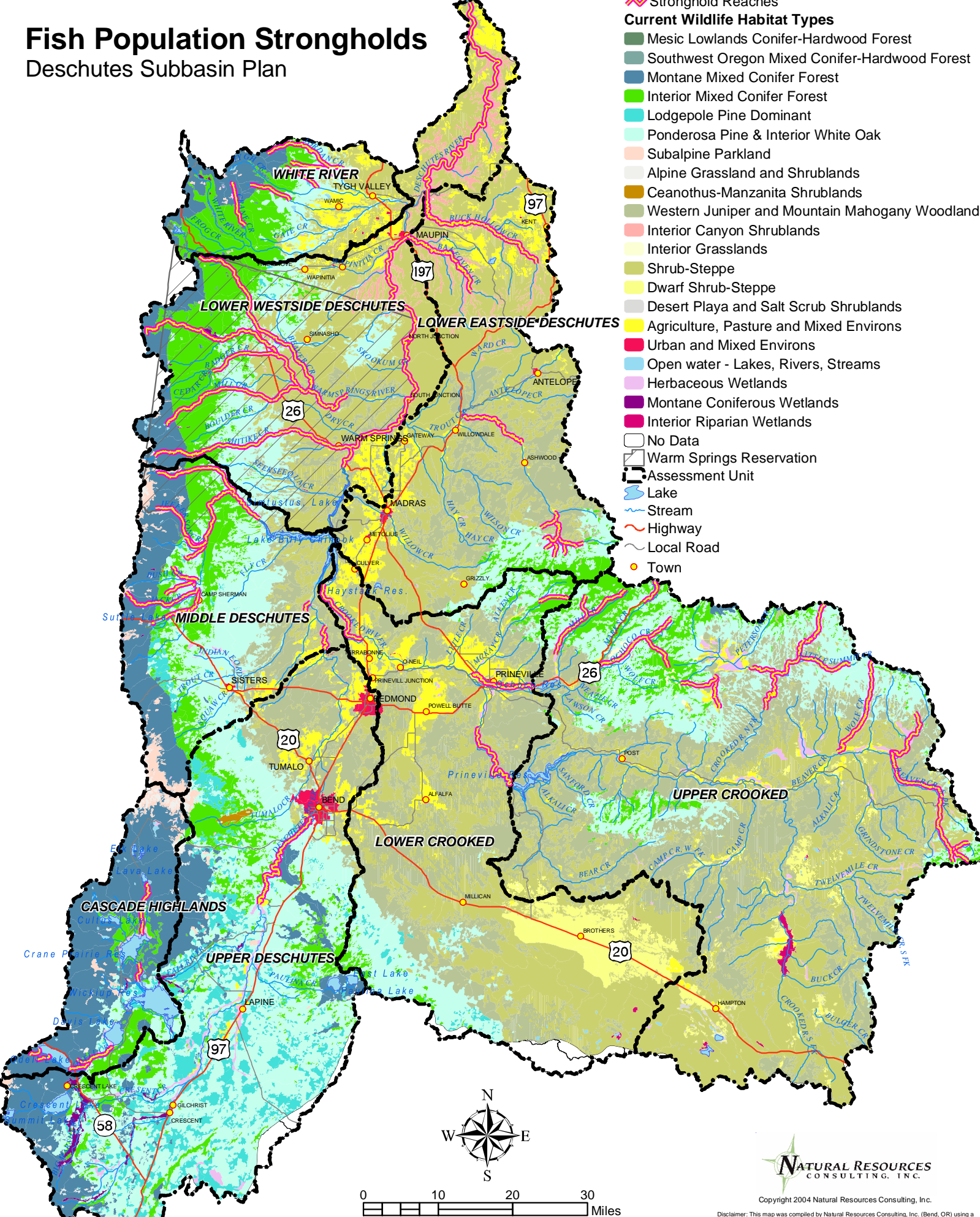


Fish Population Strongholds

Deschutes Subbasin Plan

- Stronghold Reaches
- Current Wildlife Habitat Types**
- Mesic Lowlands Conifer-Hardwood Forest
- Southwest Oregon Mixed Conifer-Hardwood Forest
- Montane Mixed Conifer Forest
- Interior Mixed Conifer Forest
- Lodgepole Pine Dominant
- Ponderosa Pine & Interior White Oak
- Subalpine Parkland
- Alpine Grassland and Shrublands
- Ceanothus-Manzanita Shrublands
- Western Juniper and Mountain Mahogany Woodlands
- Interior Canyon Shrublands
- Interior Grasslands
- Shrub-Steppe
- Dwarf Shrub-Steppe
- Desert Playa and Salt Scrub Shrublands
- Agriculture, Pasture and Mixed Environs
- Urban and Mixed Environs
- Open water - Lakes, Rivers, Streams
- Herbaceous Wetlands
- Montane Coniferous Wetlands
- Interior Riparian Wetlands
- No Data
- Warm Springs Reservation
- Assessment Unit
- Lake
- Stream
- Highway
- Local Road
- Town



Scale 1:1,000,000



Copyright 2004 Natural Resources Consulting, Inc.

Disclaimer: This map was compiled by Natural Resources Consulting, Inc. (Bend, OR) using a variety of data sources. Data is believed to be accurate; however, a degree of error is inherent in all maps. This map is distributed "AS-IS" without warranties of any kind, either expressed or implied, including but not limited to warranties of suitability to a particular purpose or use. This map is intended for use only at the published scale. Reproduction is prohibited.

Data Source: QHA/EDT Models (Mobrand Biometrics), as Supplied by Local Resource Managers
 IBIS. 2003. Interactive Biodiversity Information System (<http://ibis.nwhi.org>), Northwest Habitat Institute, Corvallis, OR.
 and The Northwest Power and Conservation Council.

Priority Stream Reaches and Restoration Projects

Deschutes Subbasin Plan

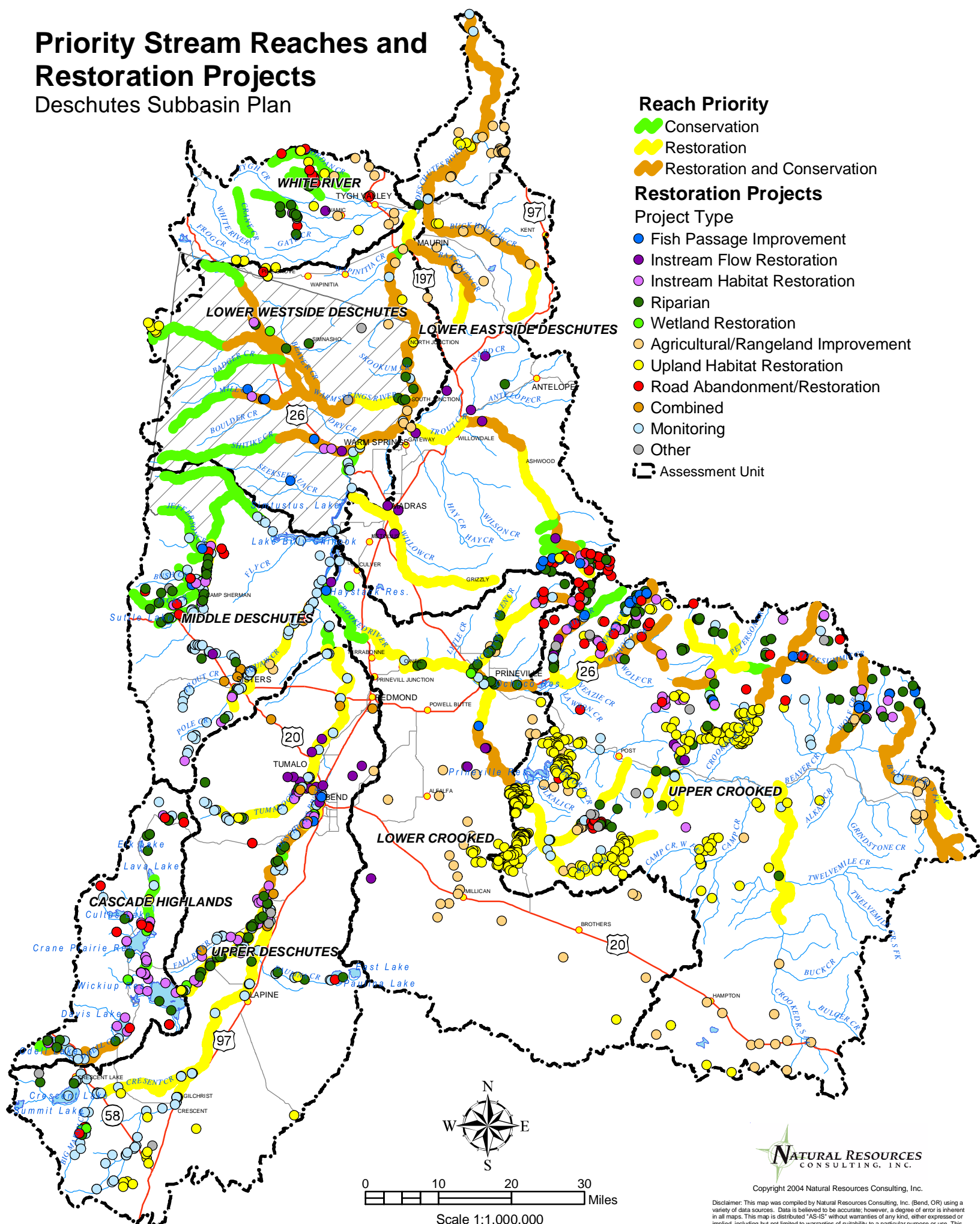
Reach Priority

- █ Conservation
- █ Restoration
- █ Restoration and Conservation

Restoration Projects

Project Type

- Fish Passage Improvement
- Instream Flow Restoration
- Instream Habitat Restoration
- Riparian
- Wetland Restoration
- Agricultural/Rangeland Improvement
- Upland Habitat Restoration
- Road Abandonment/Restoration
- Combined
- Monitoring
- Other
- Assessment Unit



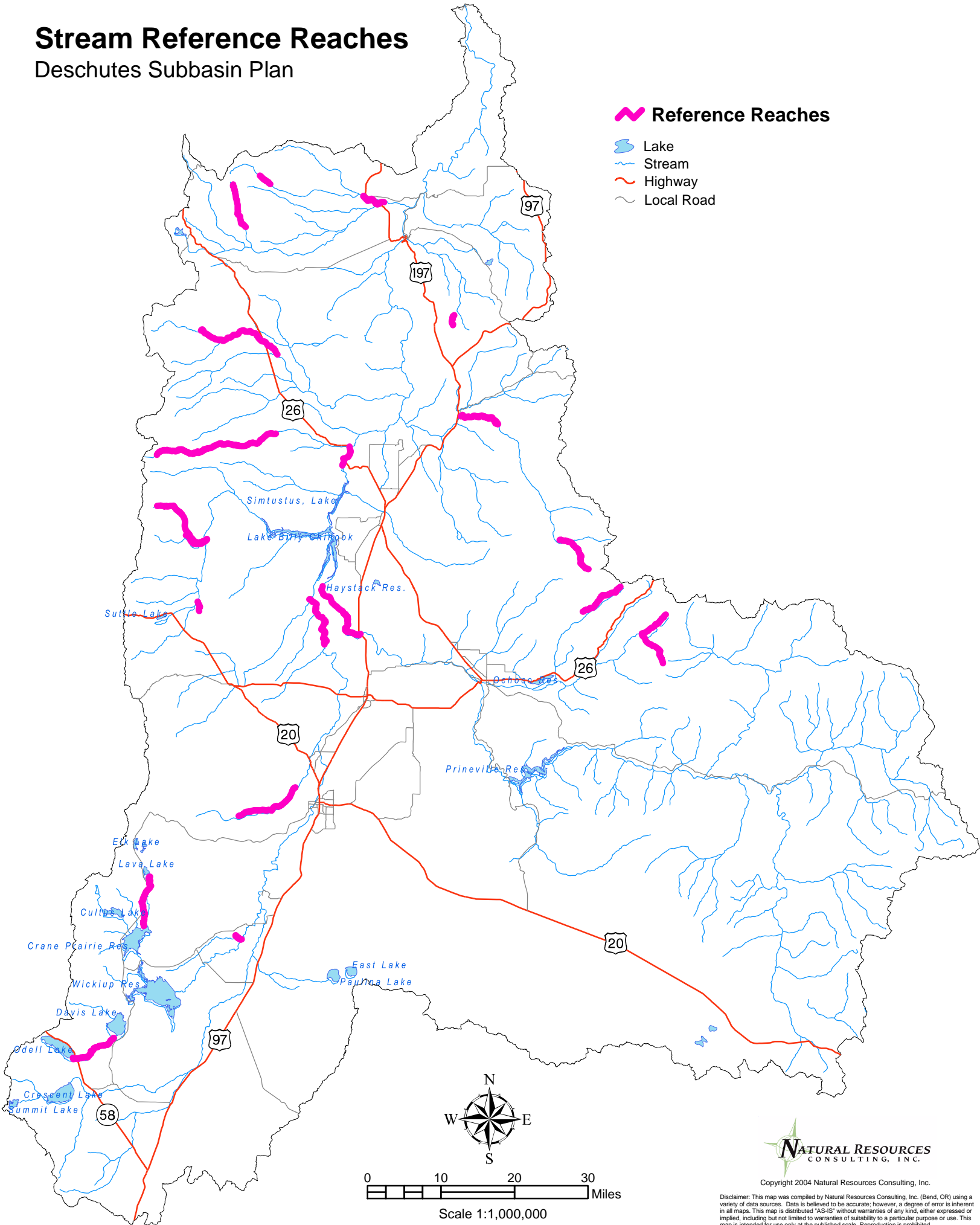
Copyright 2004 Natural Resources Consulting, Inc.

Disclaimer: This map was compiled by Natural Resources Consulting, Inc. (Bend, OR) using a variety of data sources. Data is believed to be accurate; however, a degree of error is inherent in all maps. This map is distributed "AS-IS" without warranties of any kind, either expressed or implied, including but not limited to warranties of suitability to a particular purpose or use. This map is intended for use only at the published scale. Reproduction is prohibited.

Data Source: DRC Existing Activities Inventory and Regional Ecosystem Office (REO) Interagency Restoration Database QHA/EDT Models (Mobrand Biometrics), as Supplied by Local Resource Managers

Stream Reference Reaches

Deschutes Subbasin Plan



Stream Fish Passage Limitations


Natural and Artificial Structures,
Water Quality and Quantity

Deschutes Subbasin Plan


 Seasonal Passage Obstruction Reaches

 Obstruction Reaches


Priority Stream Reaches


 Conservation


 Restoration

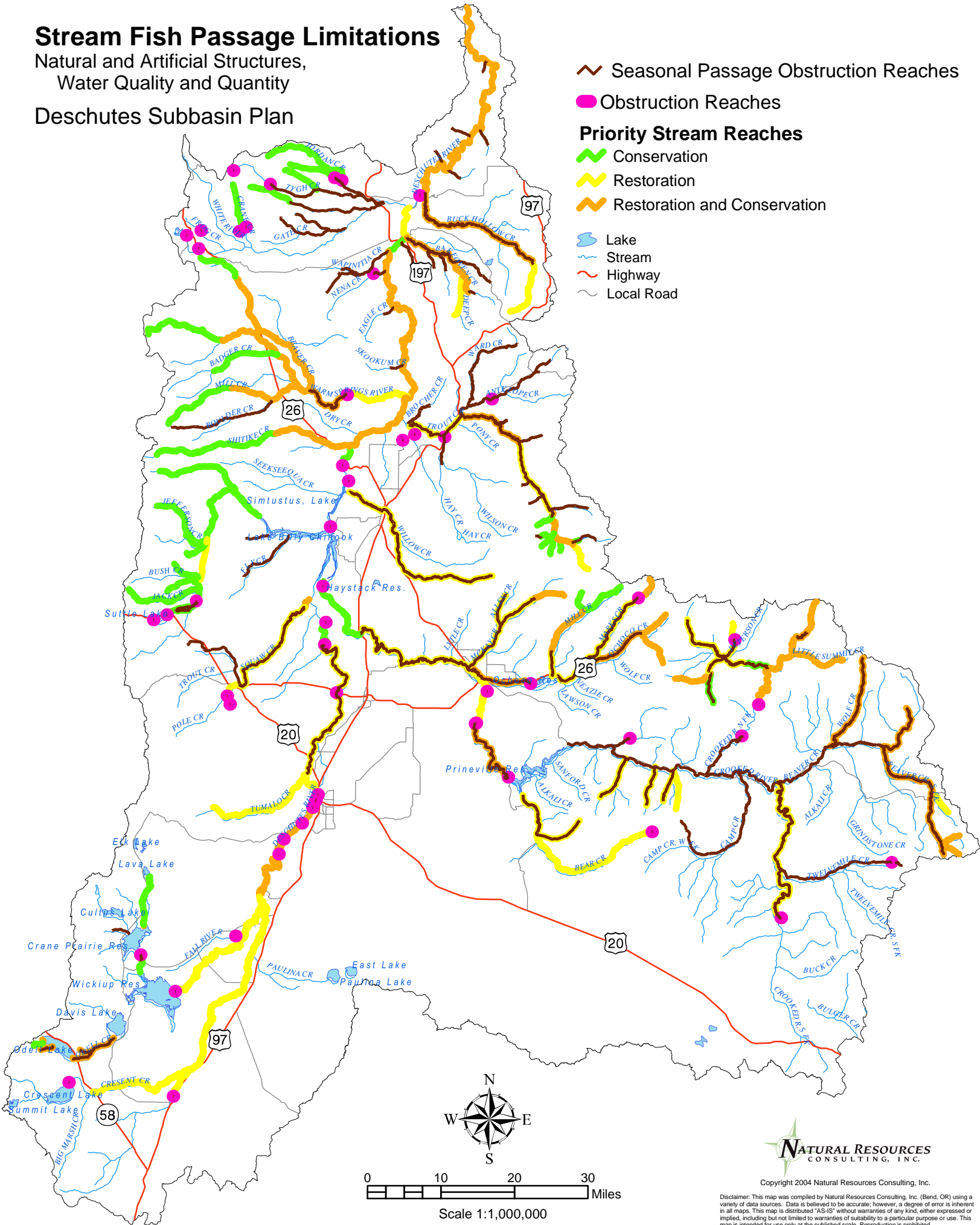
 Restoration and Conservation

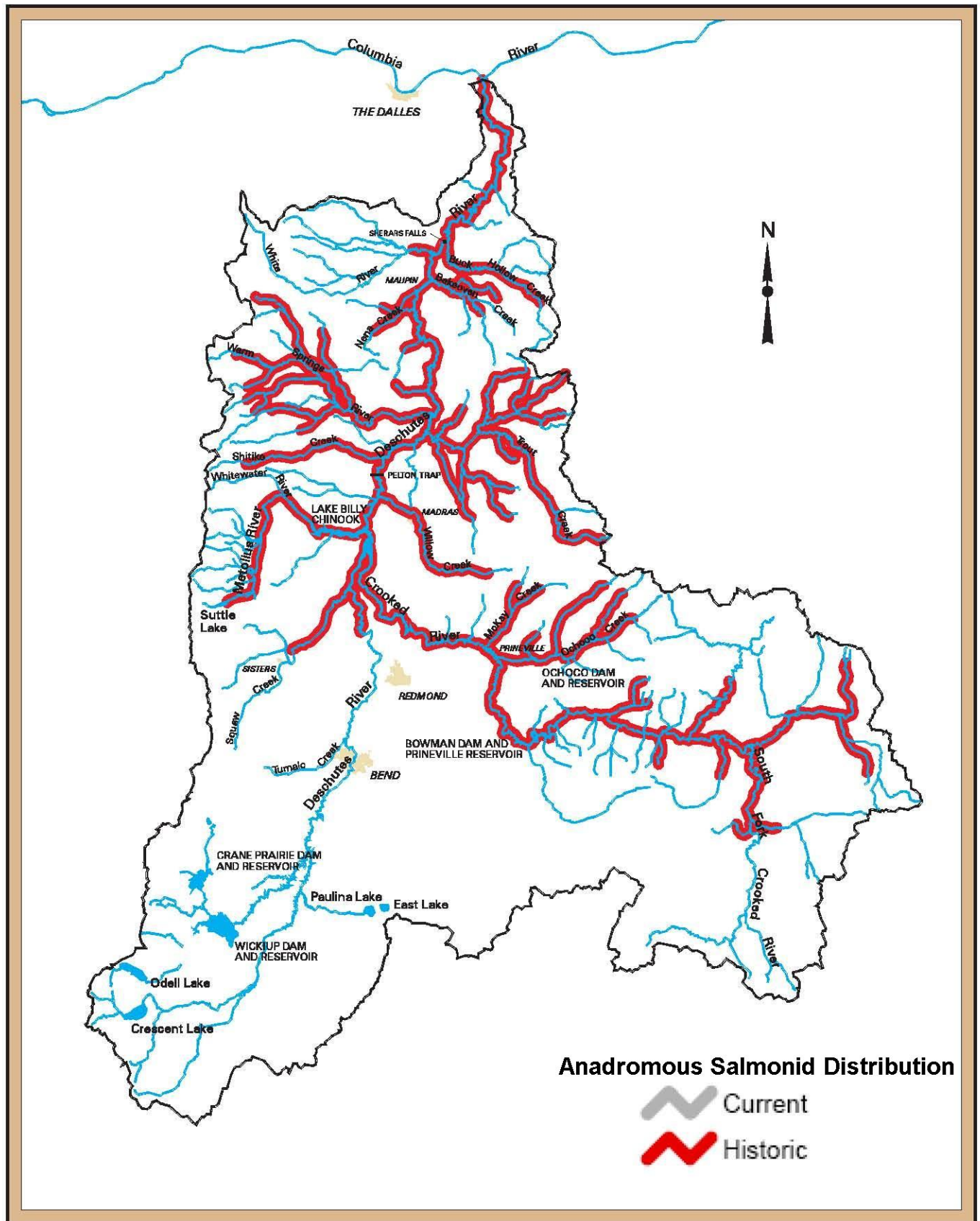
 Lake

 Stream

 Highway

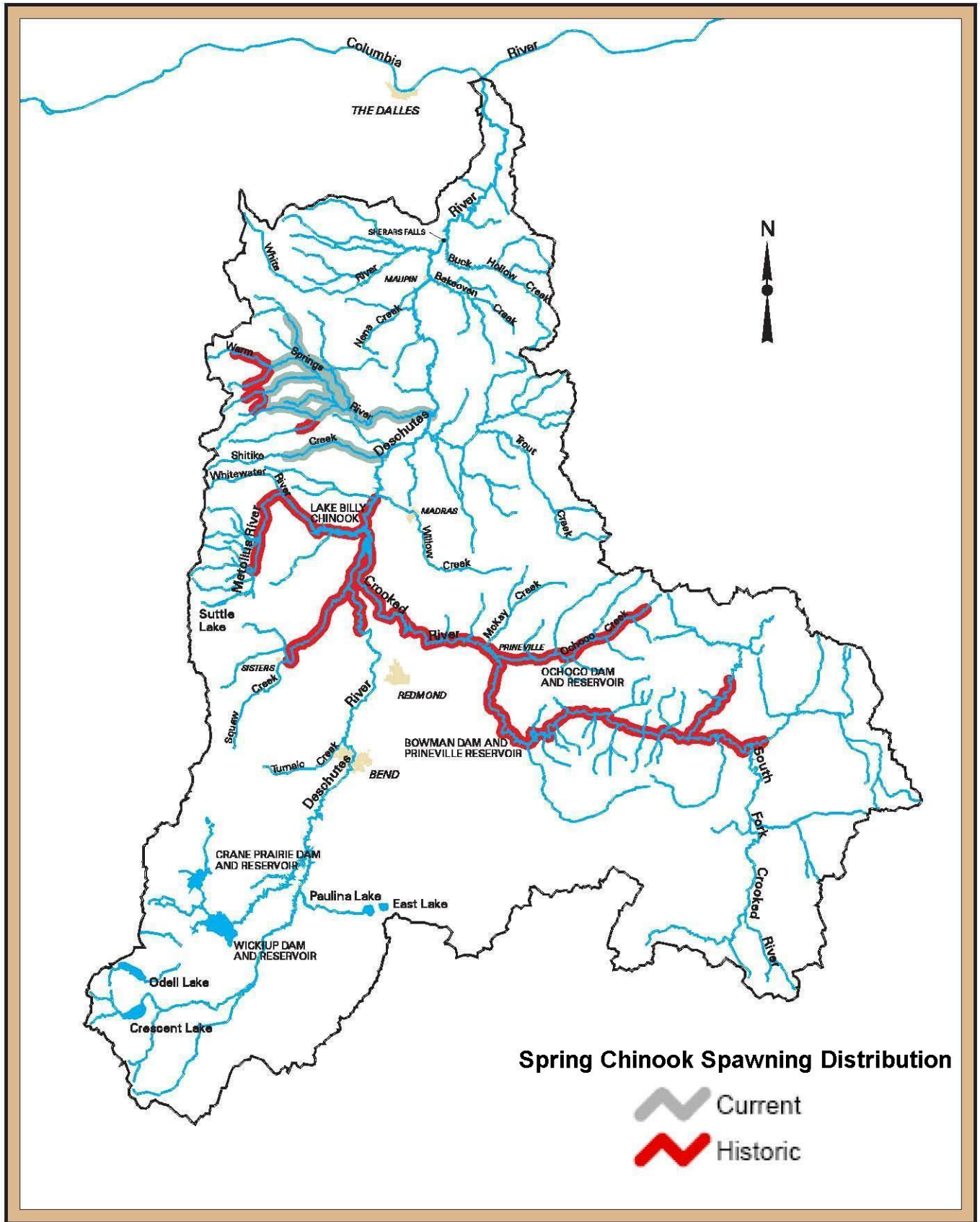
 Local Road





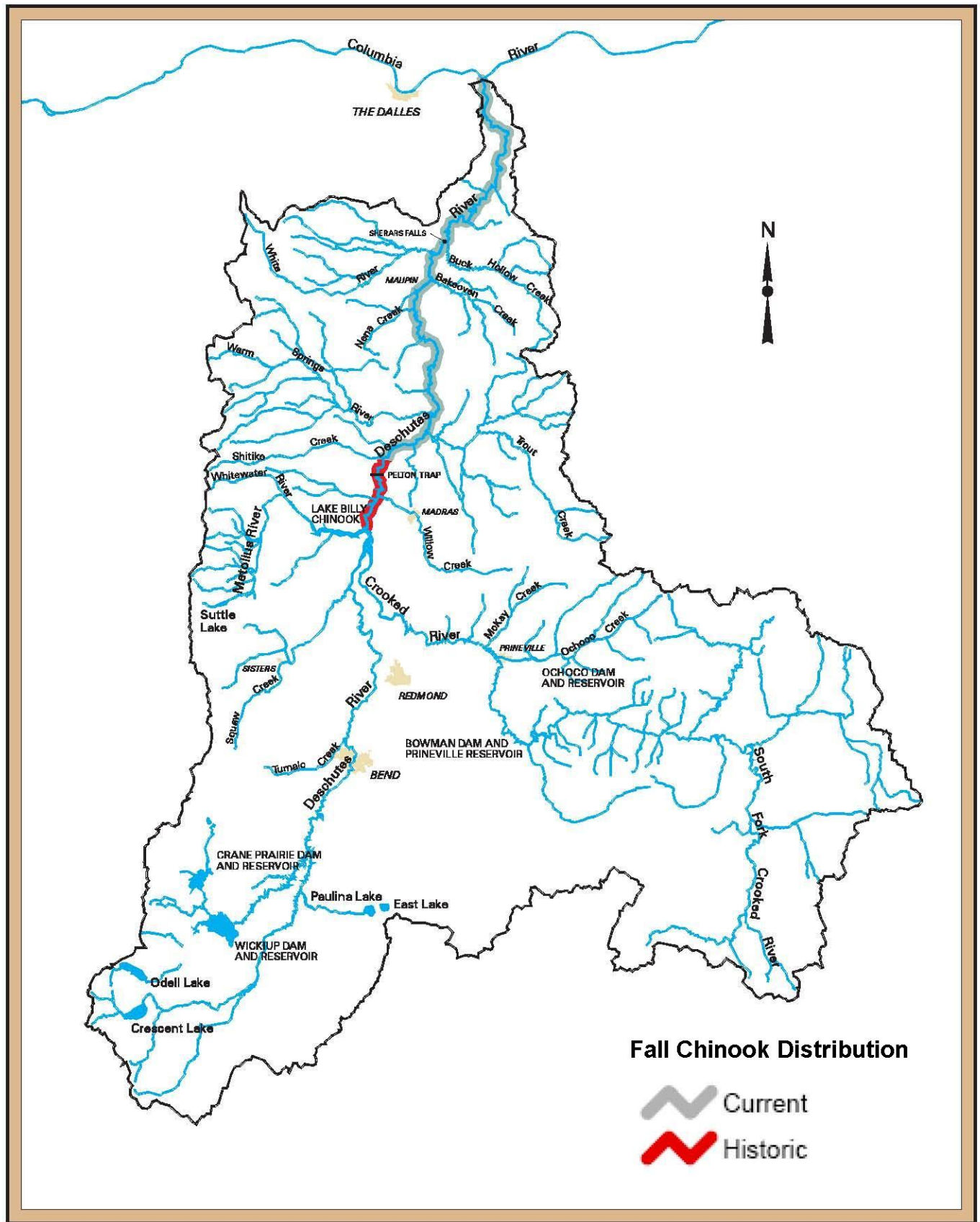
Approximate Historical Range of all Anadromous Salmonids in the Deschutes Basin

Source: Lichatowich, J.A. 1998. A conceptual foundation for the management of native salmonids in the Deschutes River basin. Portland General Electric Company. Portland, Oregon.



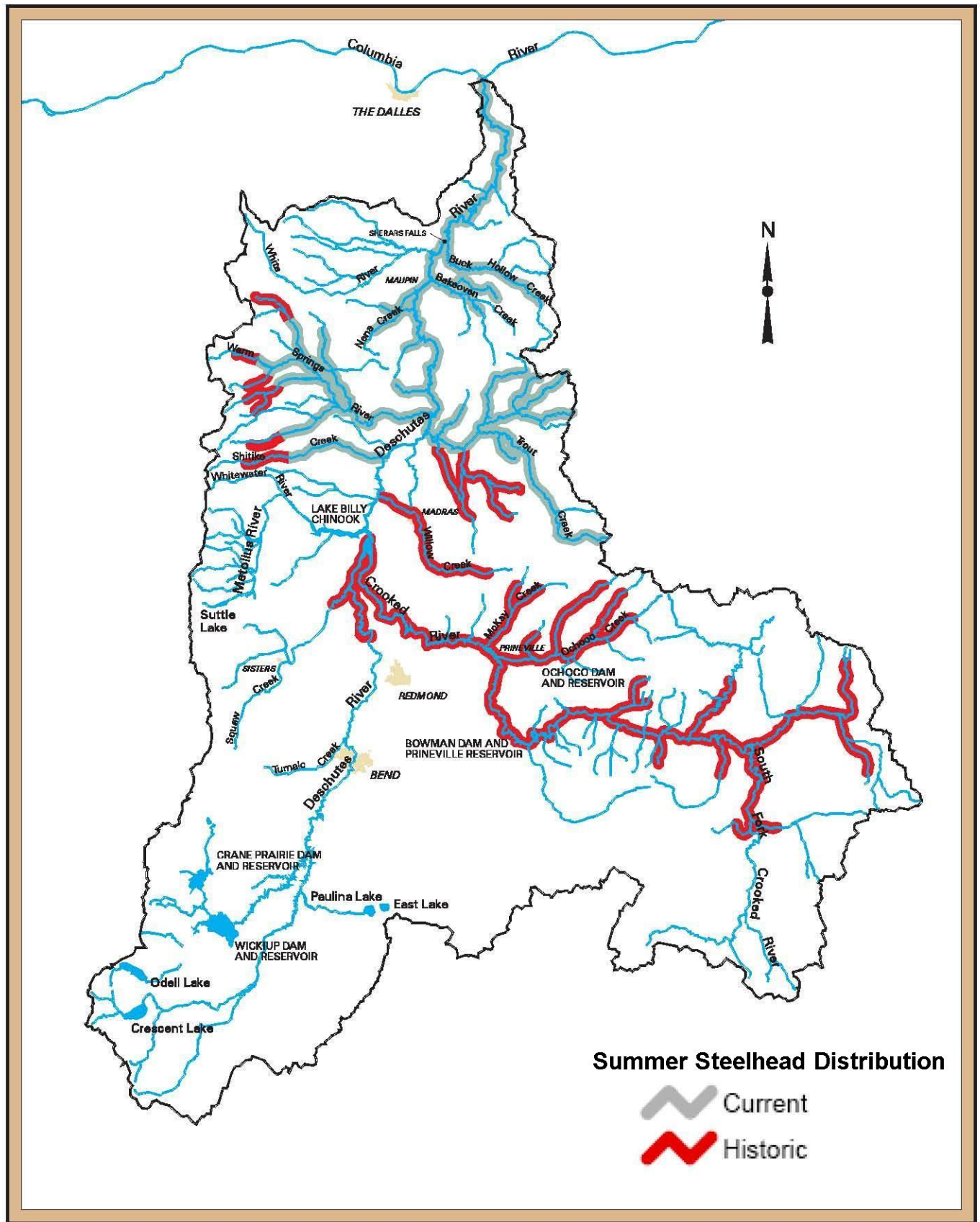
Approximate Current and Historical Spawning Distribution of Spring Chinook in the Deschutes Basin

Source: Lichatowich, J.A. 1998. A conceptual foundation for the management of native salmonids in the Deschutes River basin. Portland General Electric Company. Portland, Oregon.



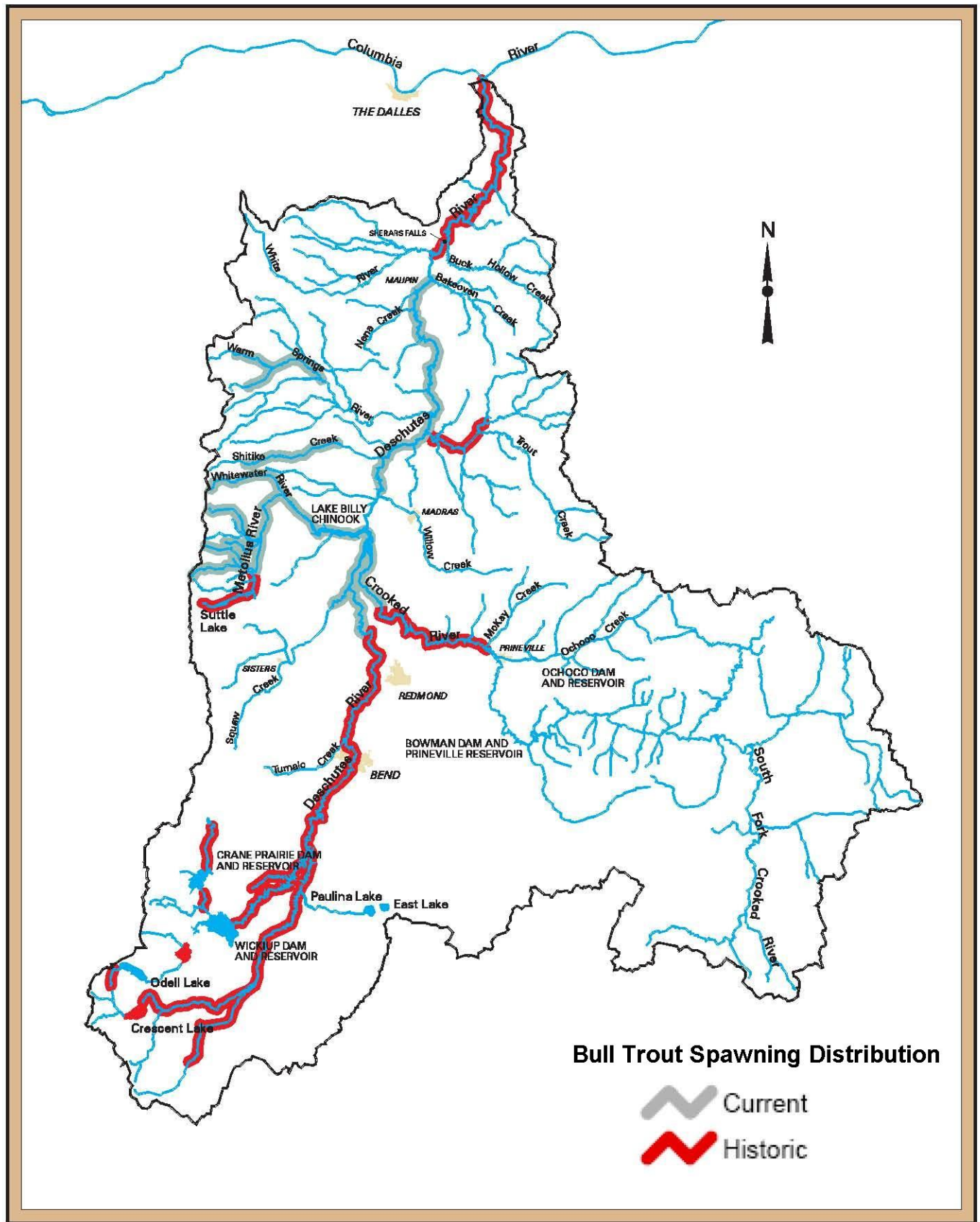
Approximate Current and Historical Distribution of FALL Chinook in the Deschutes Basin

Source: Lichatowich, J.A. 1998. A conceptual foundation for the management of native salmonids in the Deschutes River basin. Portland General Electric Company. Portland, Oregon.



Approximate Current and Historical Distribution of Summer Steelhead in the Deschutes Basin

Source: Lichatowich, J.A. 1998. A conceptual foundation for the management of native salmonids in the Deschutes River basin. Portland General Electric Company. Portland, Oregon.



Approximate Historical Spawning Distribution of Bull Trout in the Deschutes Basin

Source: Lichatowich, J.A. 1998. A conceptual foundation for the management of native salmonids in the Deschutes River basin. Portland General Electric Company. Portland, Oregon.