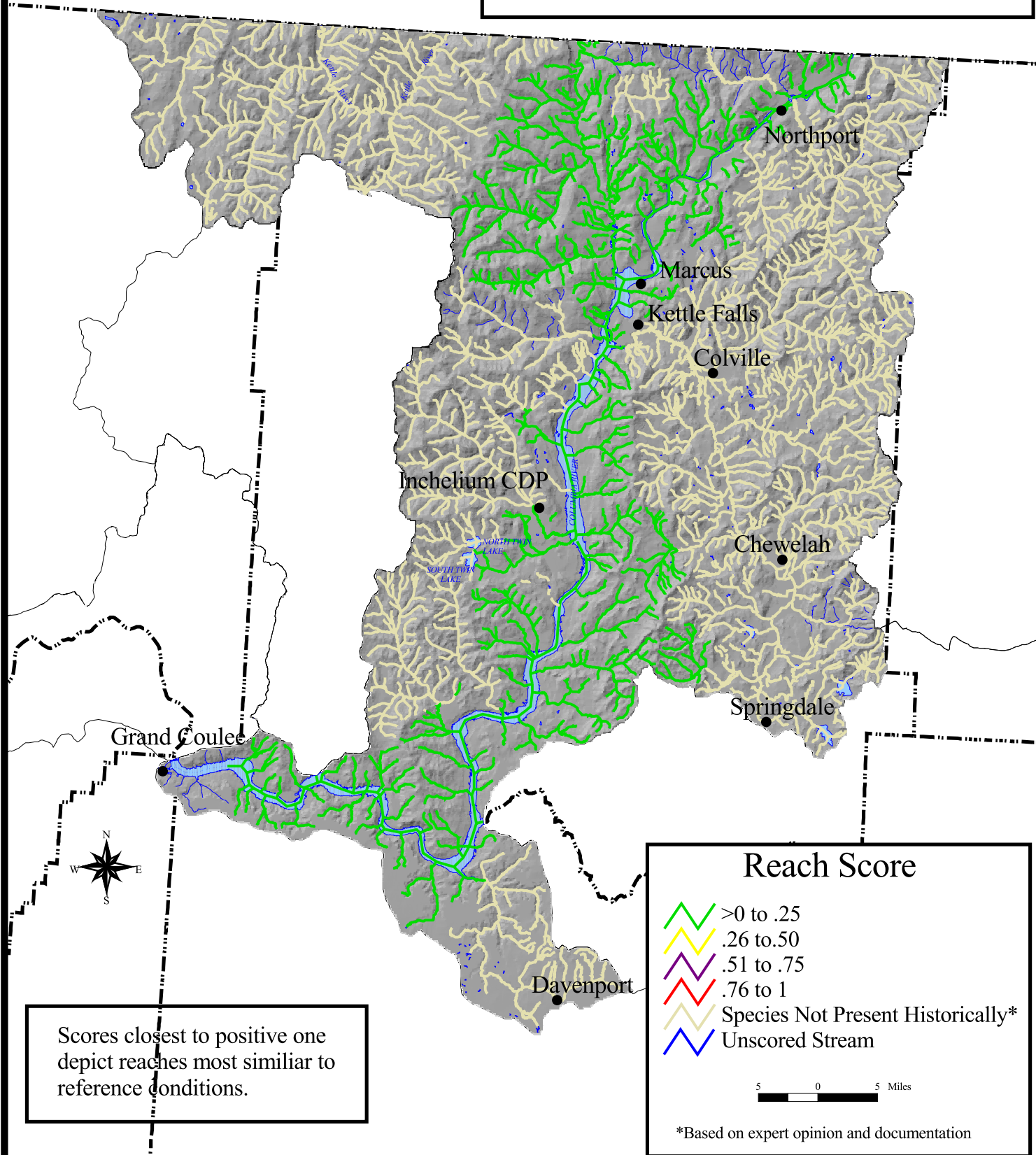


Upper Columbia

Weighted Current Habitat Condition Scores

Adfluvial Redband/Rainbow Trout



Reach Score

- ▬ >0 to .25
- ▬ .26 to .50
- ▬ .51 to .75
- ▬ .76 to 1
- ▬ Species Not Present Historically*
- ▬ Unscored Stream

5 0 5 Miles

*Based on expert opinion and documentation

Scores closest to positive one depict reaches most similar to reference conditions.