

# Wildlife Habitat Change

## Deschutes Subbasin Plan

### Interior Grasslands

% Change from Historic Condition

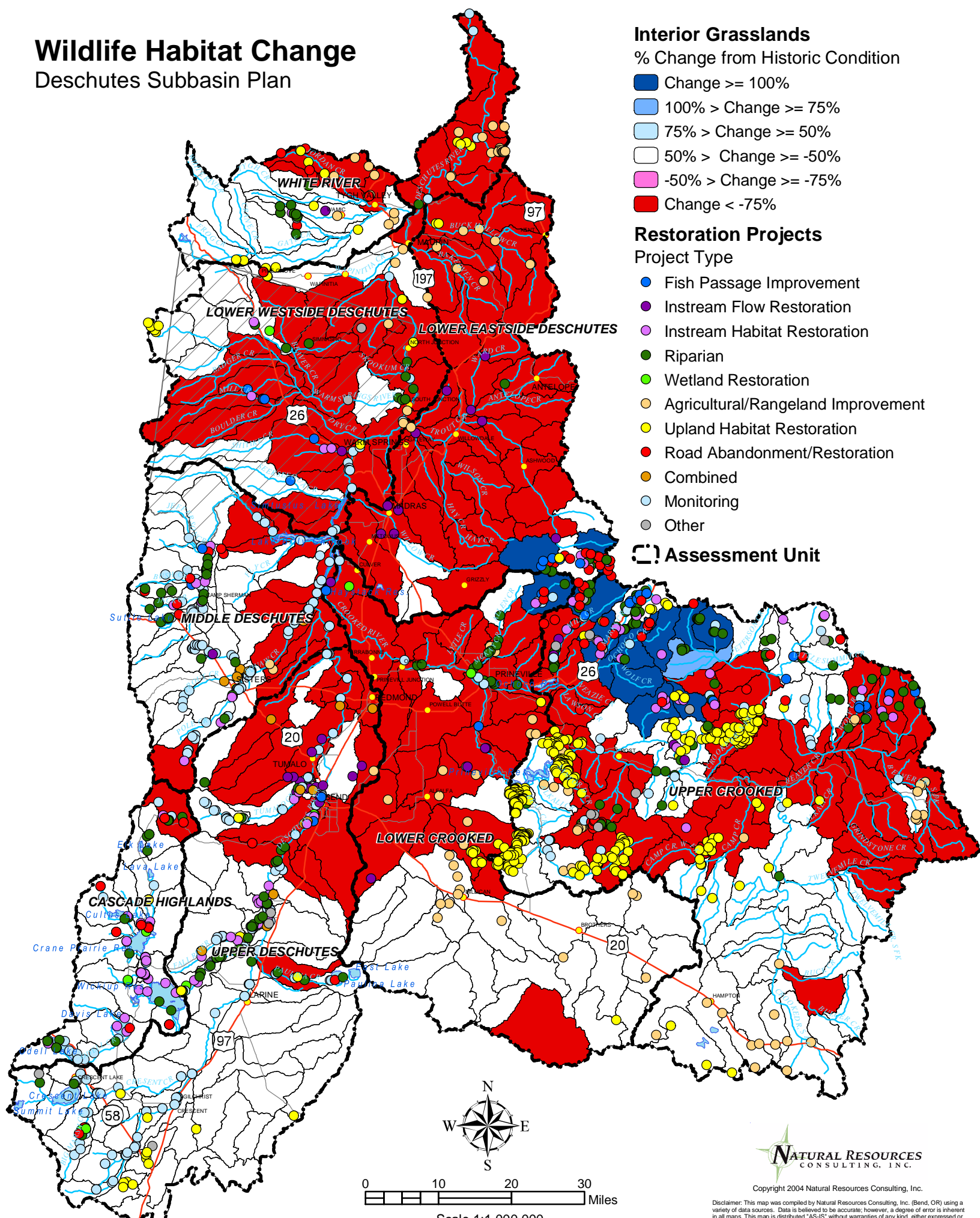
- Change  $\geq$  100%
- 100% > Change  $\geq$  75%
- 75% > Change  $\geq$  50%
- 50% > Change  $\geq$  -50%
- 50% > Change  $\geq$  -75%
- Change < -75%

### Restoration Projects

Project Type

- Fish Passage Improvement
- Instream Flow Restoration
- Instream Habitat Restoration
- Riparian
- Wetland Restoration
- Agricultural/Rangeland Improvement
- Upland Habitat Restoration
- Road Abandonment/Restoration
- Combined
- Monitoring
- Other

Assessment Unit



Data Sources: Deschutes Resources Conservancy Existing Activities Inventory.  
 Regional Ecosystem Office (REO) Interagency Restoration Database. (<http://www.reo.gov/restoration>)  
 IBIS. 2003. Interactive Biodiversity Information System (<http://ibis.nwhi.org>), Northwest Habitat Institute, Corvallis, OR.

**NATURAL RESOURCES**  
 CONSULTING, INC.  
 Copyright 2004 Natural Resources Consulting, Inc.

Disclaimer: This map was compiled by Natural Resources Consulting, Inc. (Bend, OR) using a variety of data sources. Data is believed to be accurate; however, a degree of error is inherent in all maps. This map is distributed "AS-IS" without warranties of any kind, either expressed or implied, including but not limited to warranties of suitability to a particular purpose or use. This map is intended for use only at the published scale. Reproduction is prohibited.

# Wildlife Habitat Change

## Deschutes Subbasin Plan

### Shrub-Steppe

% Change from Historic Condition

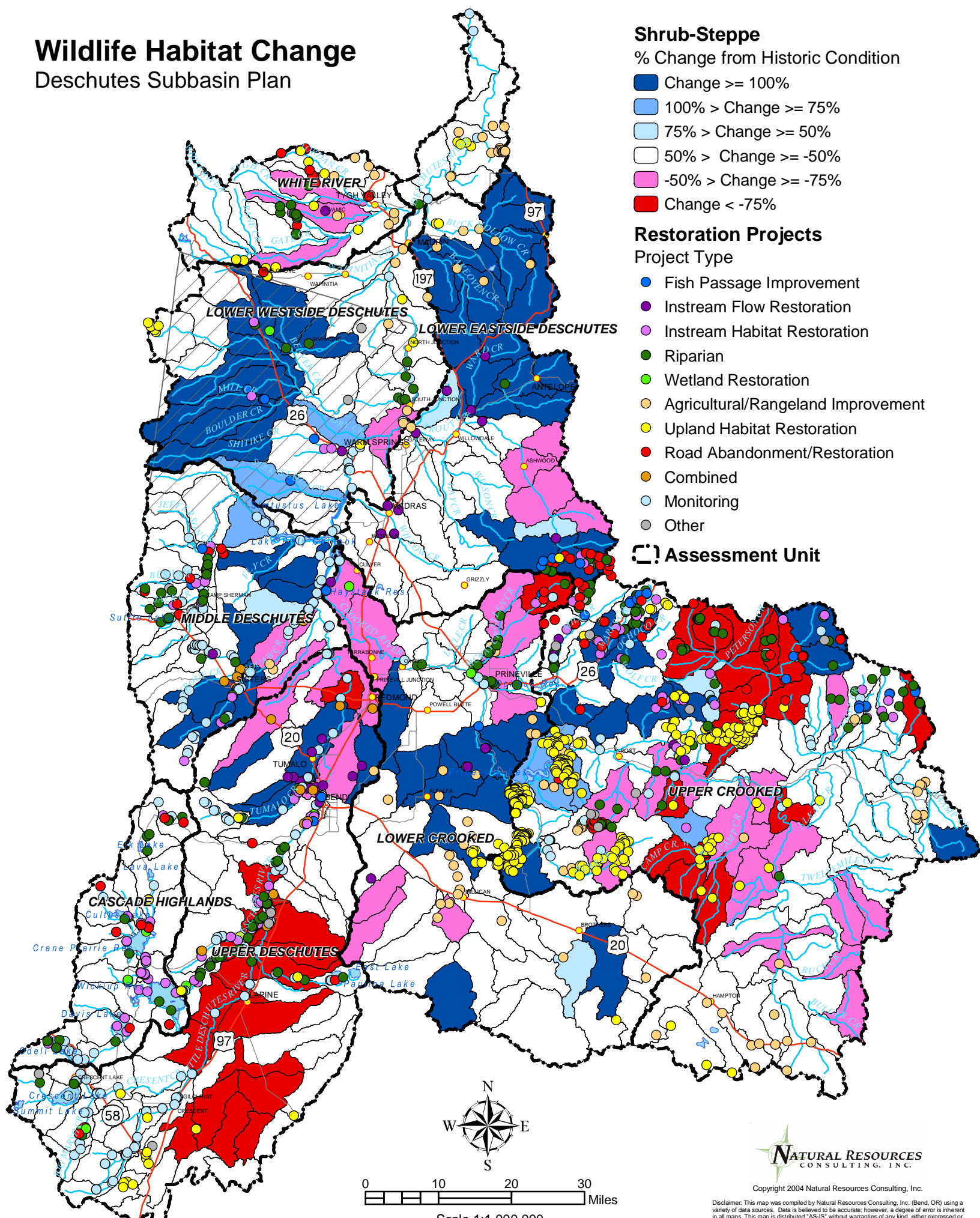
- Change  $\geq$  100%
- 100% > Change  $\geq$  75%
- 75% > Change  $\geq$  50%
- 50% > Change  $\geq$  -50%
- 50% > Change  $\geq$  -75%
- Change < -75%

### Restoration Projects

Project Type

- Fish Passage Improvement
- Instream Flow Restoration
- Instream Habitat Restoration
- Riparian
- Wetland Restoration
- Agricultural/Rangeland Improvement
- Upland Habitat Restoration
- Road Abandonment/Restoration
- Combined
- Monitoring
- Other

Assessment Unit



Data Sources: Deschutes Resources Conservancy Existing Activities Inventory.  
 Regional Ecosystem Office (REO) Interagency Restoration Database. (<http://www.reo.gov/restoration>)  
 IBIS. 2003. Interactive Biodiversity Information System (<http://ibis.nwhi.org>), Northwest Habitat Institute, Corvallis, OR.


**NATURAL RESOURCES**  
 CONSULTING, INC.  
 Copyright 2004 Natural Resources Consulting, Inc.

Disclaimer: This map was compiled by Natural Resources Consulting, Inc. (Bend, OR) using a variety of data sources. Data is believed to be accurate; however, a degree of error is inherent in all maps. This map is distributed "AS-IS" without warranties of any kind, either expressed or implied, including but not limited to warranties of suitability to a particular purpose or use. This map is intended for use only at the published scale. Reproduction is prohibited.

# Wildlife Habitat Change

## Deschutes Subbasin Plan

### Ponderosa Pine & Interior White Oak

% Change from Historic Condition

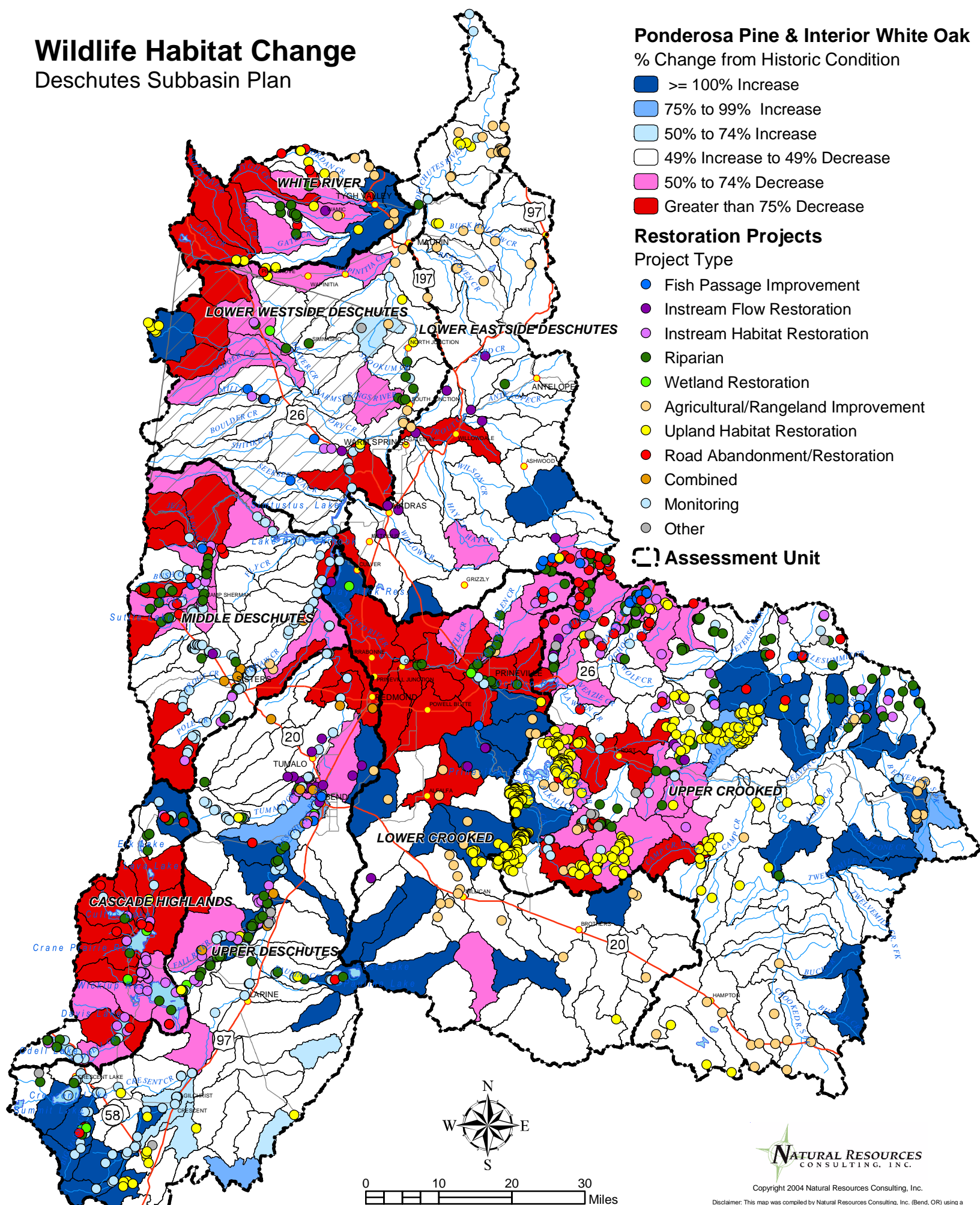
- >= 100% Increase
- 75% to 99% Increase
- 50% to 74% Increase
- 49% Increase to 49% Decrease
- 50% to 74% Decrease
- Greater than 75% Decrease

### Restoration Projects

#### Project Type

- Fish Passage Improvement
- Instream Flow Restoration
- Instream Habitat Restoration
- Riparian
- Wetland Restoration
- Agricultural/Rangeland Improvement
- Upland Habitat Restoration
- Road Abandonment/Restoration
- Combined
- Monitoring
- Other

#### Assessment Unit



# Wildlife Habitat Change

## Deschutes Subbasin Plan

### Lodgepole Pine Dominant % Change from Historic Condition

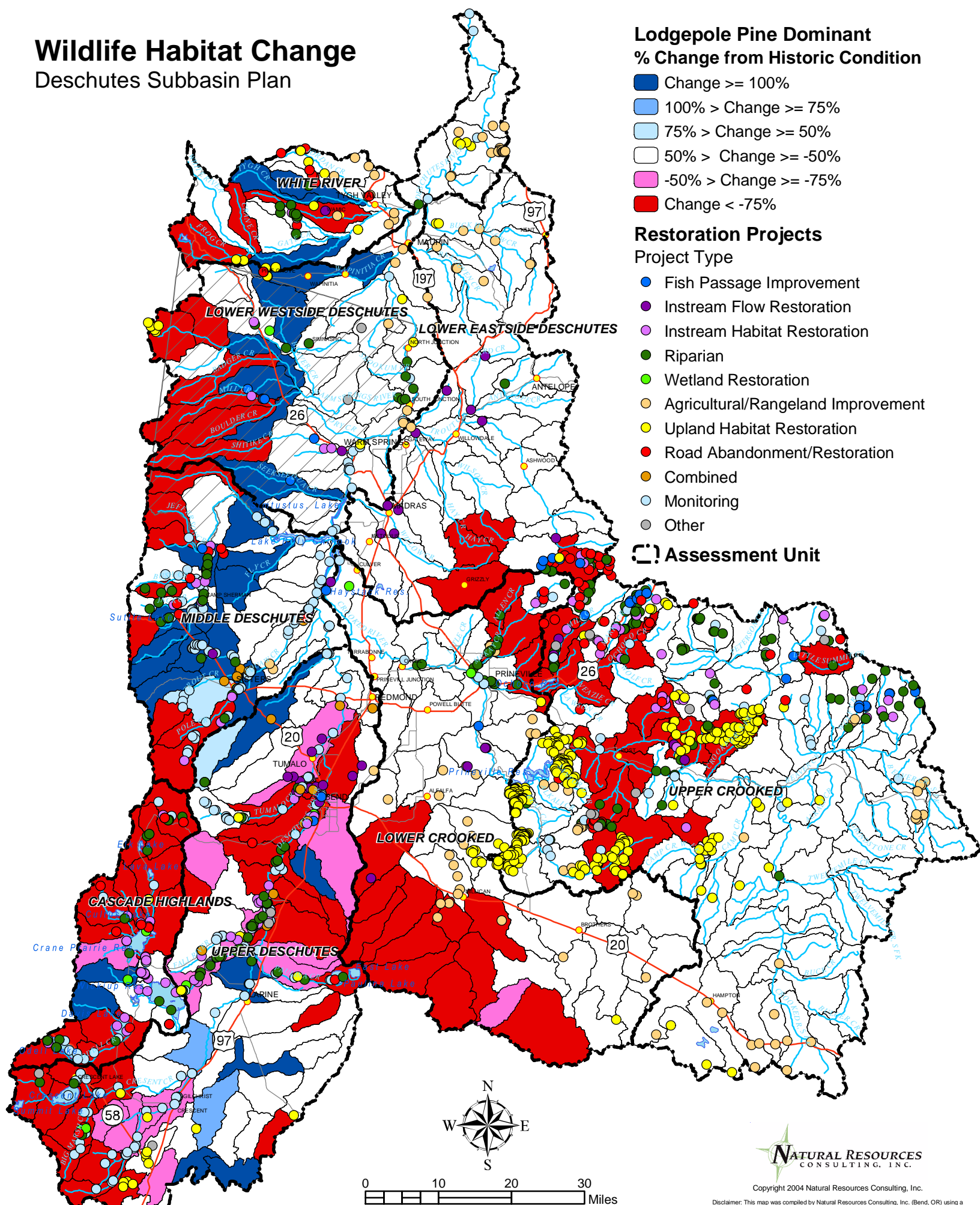
- Change  $\geq$  100%
- 100% > Change  $\geq$  75%
- 75% > Change  $\geq$  50%
- 50% > Change  $\geq$  -50%
- 50% > Change  $\geq$  -75%
- Change < -75%

### Restoration Projects

#### Project Type

- Fish Passage Improvement
- Instream Flow Restoration
- Instream Habitat Restoration
- Riparian
- Wetland Restoration
- Agricultural/Rangeland Improvement
- Upland Habitat Restoration
- Road Abandonment/Restoration
- Combined
- Monitoring
- Other

#### Assessment Unit



Data Sources: Deschutes Resources Conservancy Existing Activities Inventory.  
 Regional Ecosystem Office (REO) Interagency Restoration Database. (<http://www.reo.gov/restoration>)  
 IBIS. 2003. Interactive Biodiversity Information System (<http://ibis.nwhi.org>), Northwest Habitat Institute, Corvallis, OR.

  
 Copyright 2004 Natural Resources Consulting, Inc.

Disclaimer: This map was compiled by Natural Resources Consulting, Inc. (Bend, OR) using a variety of data sources. Data is believed to be accurate; however, a degree of error is inherent in all maps. This map is distributed "AS-IS" without warranties of any kind, either expressed or implied, including but not limited to warranties of suitability to a particular purpose or use. This map is intended for use only at the published scale. Reproduction is prohibited.

# Priority Stream Reaches and Wildlife Habitat Change

## Deschutes Subbasin Plan

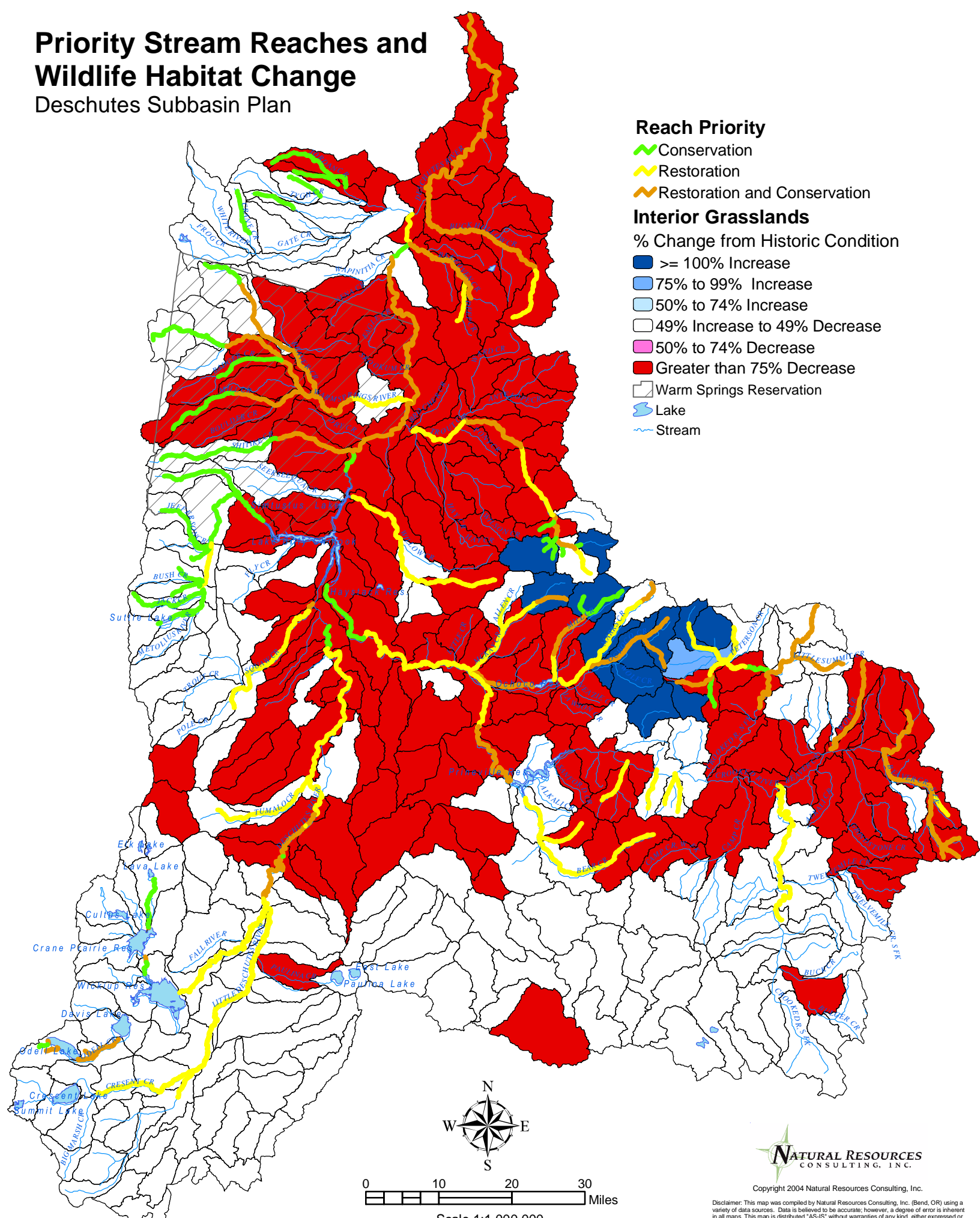
### Reach Priority

- Conservation
- Restoration
- Restoration and Conservation

### Interior Grasslands

% Change from Historic Condition

- $\geq 100\%$  Increase
- 75% to 99% Increase
- 50% to 74% Increase
- 49% Increase to 49% Decrease
- 50% to 74% Decrease
- Greater than 75% Decrease
- Warm Springs Reservation
- Lake
- Stream



Data Source: QHA/EDT Models (Mobrand Biometrics), as Supplied by Local Resource Managers  
 IBIS. 2003. Interactive Biodiversity Information System (<http://ibis.nwhi.org>), Northwest Habitat Institute, Corvallis, OR.

**NATURAL RESOURCES**  
 CONSULTING, INC.  
 Copyright 2004 Natural Resources Consulting, Inc.

Disclaimer: This map was compiled by Natural Resources Consulting, Inc. (Bend, OR) using a variety of data sources. Data is believed to be accurate; however, a degree of error is inherent in all maps. This map is distributed "AS-IS" without warranties of any kind, either expressed or implied, including but not limited to warranties of suitability to a particular purpose or use. This map is intended for use only at the published scale. Reproduction is prohibited.

# Priority Stream Reaches and Wildlife Habitat Change

## Deschutes Subbasin Plan

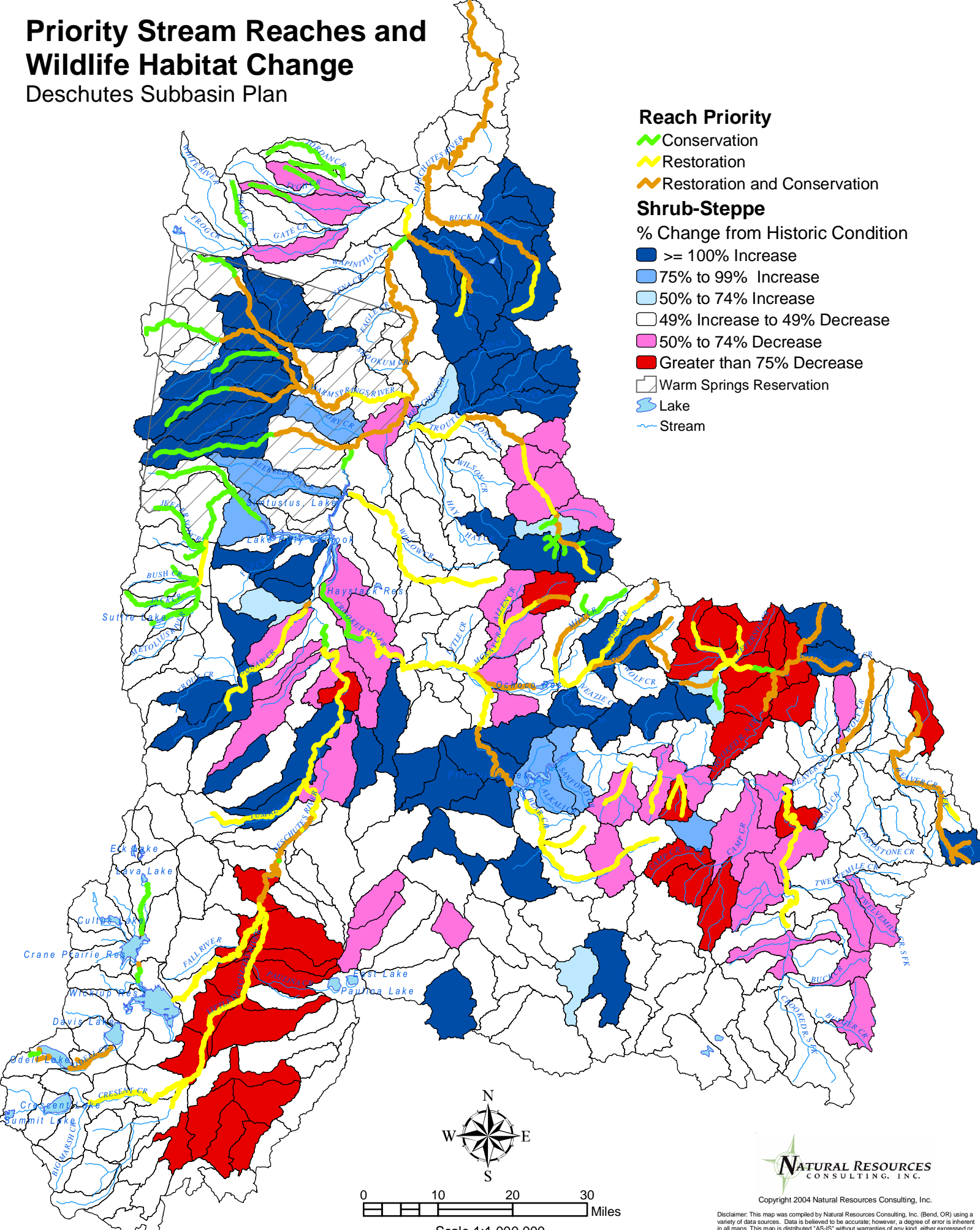
### Reach Priority

- Conservation
- Restoration
- Restoration and Conservation

### Shrub-Steppe

% Change from Historic Condition

- $\geq 100\%$  Increase
- 75% to 99% Increase
- 50% to 74% Increase
- 49% Increase to 49% Decrease
- 50% to 74% Decrease
- Greater than 75% Decrease
- Warm Springs Reservation
- Lake
- Stream



Data Source: QHA/EDT Models (Mobrand Biometrics), as Supplied by Local Resource Managers  
 IBIS. 2003. Interactive Biodiversity Information System (<http://ibis.nwhi.org>), Northwest Habitat Institute, Corvallis, OR.

**NATURAL RESOURCES**  
 CONSULTING, INC.  
 Copyright 2004 Natural Resources Consulting, Inc.

Disclaimer: This map was compiled by Natural Resources Consulting, Inc. (Bend, OR) using a variety of data sources. Data is believed to be accurate; however, a degree of error is inherent in all maps. This map is distributed "AS-IS" without warranties of any kind, either expressed or implied, including but not limited to warranties of suitability to a particular purpose or use. This map is intended for use only at the published scale. Reproduction is prohibited.

# Priority Stream Reaches and Wildlife Habitat Change

## Deschutes Subbasin Plan

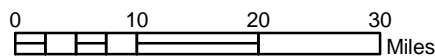
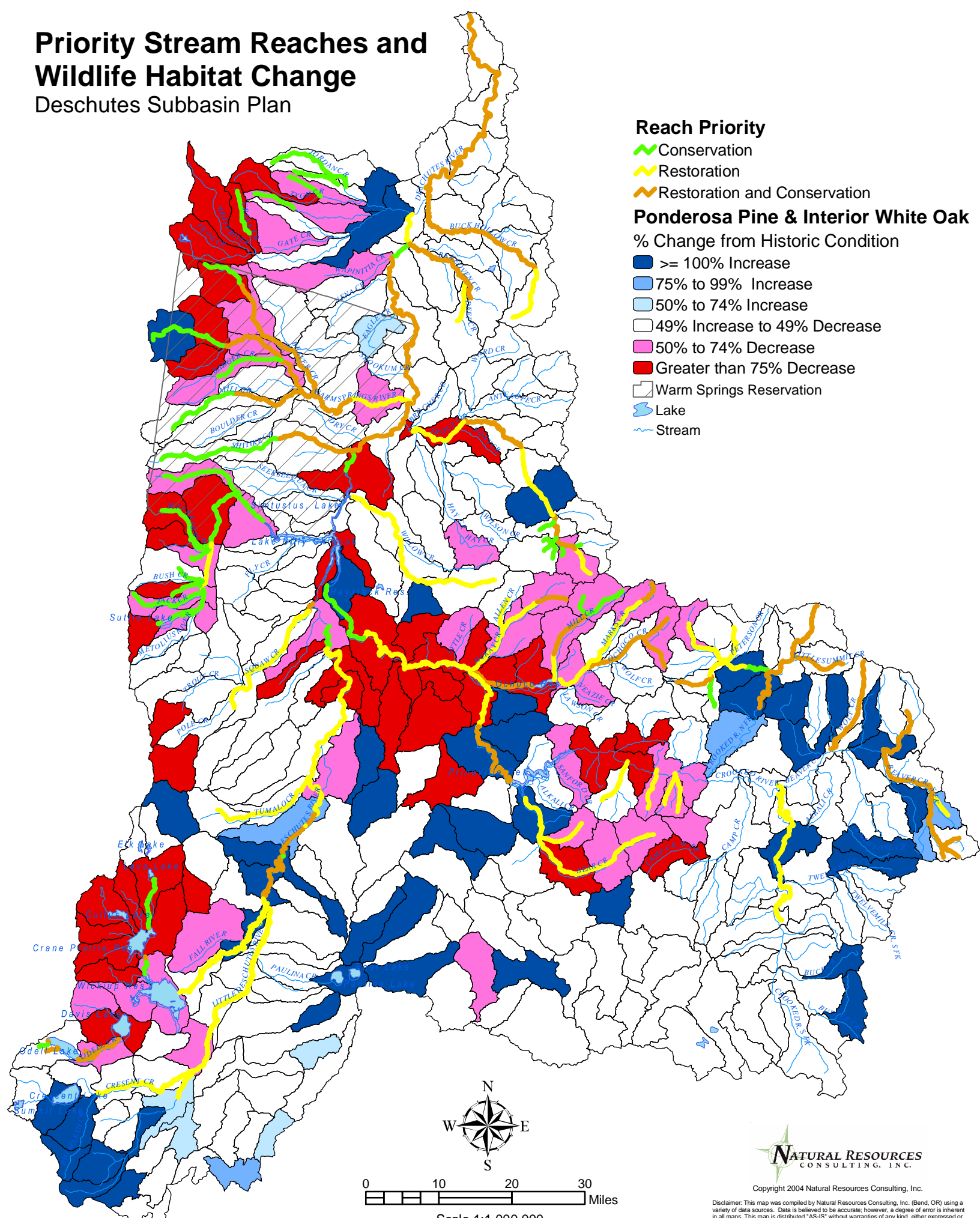
### Reach Priority

- Conservation
- Restoration
- Restoration and Conservation

### Ponderosa Pine & Interior White Oak

% Change from Historic Condition

- $\geq 100\%$  Increase
- 75% to 99% Increase
- 50% to 74% Increase
- 49% Increase to 49% Decrease
- 50% to 74% Decrease
- Greater than 75% Decrease
- Warm Springs Reservation
- Lake
- Stream



Scale 1:1,000,000



Copyright 2004 Natural Resources Consulting, Inc.

Disclaimer: This map was compiled by Natural Resources Consulting, Inc. (Bend, OR) using a variety of data sources. Data is believed to be accurate; however, a degree of error is inherent in all maps. This map is distributed "AS-IS" without warranties of any kind, either expressed or implied, including but not limited to warranties of suitability to a particular purpose or use. This map is intended for use only at the published scale. Reproduction is prohibited.

# Priority Stream Reaches and Wildlife Habitat Change

## Deschutes Subbasin Plan

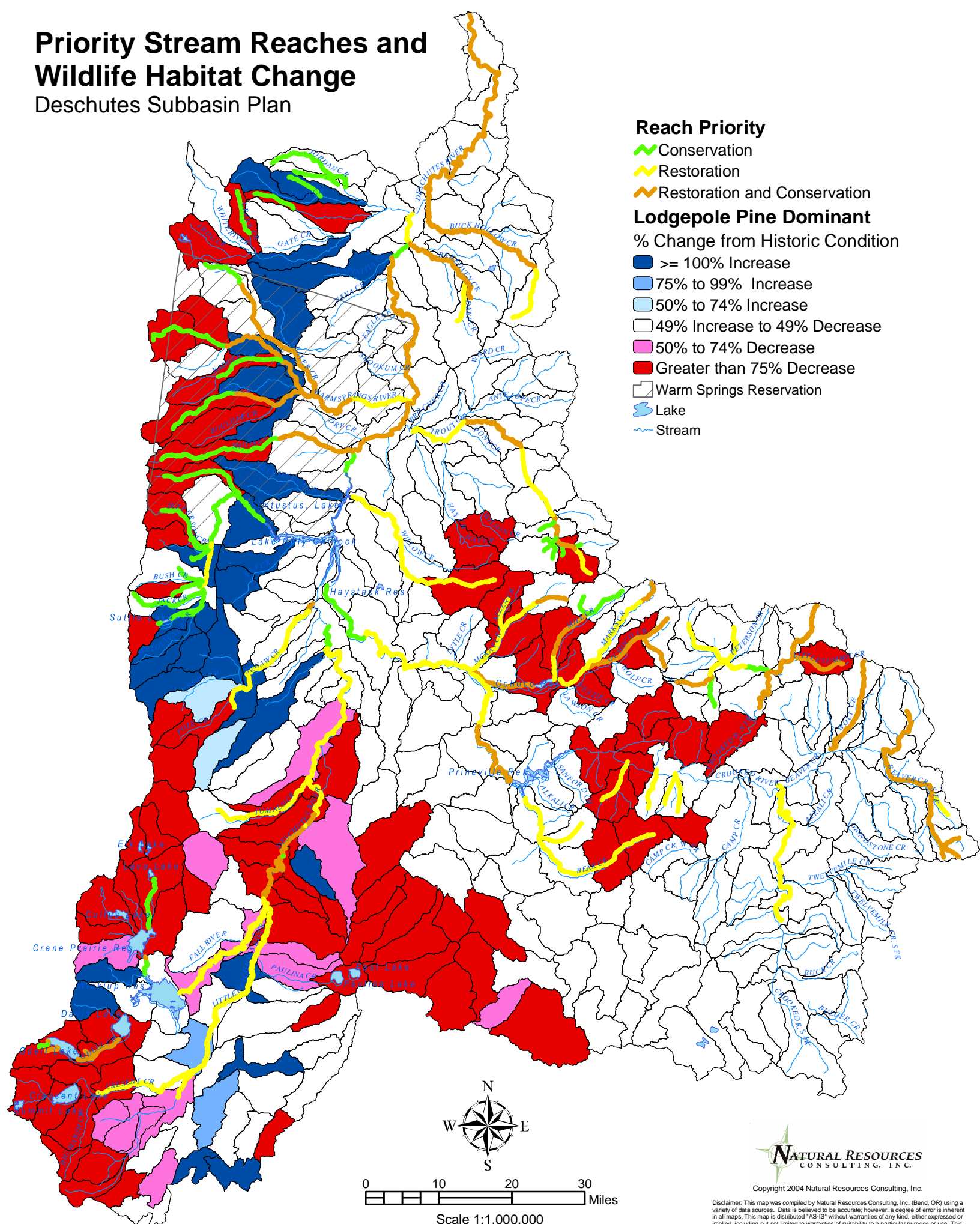
### Reach Priority

- Conservation
- Restoration
- Restoration and Conservation

### Lodgepole Pine Dominant

% Change from Historic Condition

- $\geq 100\%$  Increase
- 75% to 99% Increase
- 50% to 74% Increase
- 49% Increase to 49% Decrease
- 50% to 74% Decrease
- Greater than 75% Decrease
- Warm Springs Reservation
- Lake
- Stream



Data Source: QHA/EDT Models (Mobrand Biometrics), as Supplied by Local Resource Managers  
 IBIS. 2003. Interactive Biodiversity Information System (<http://ibis.nwhi.org>), Northwest Habitat Institute, Corvallis, OR.

**NATURAL RESOURCES**  
 CONSULTING, INC.  
 Copyright 2004 Natural Resources Consulting, Inc.

Disclaimer: This map was compiled by Natural Resources Consulting, Inc. (Bend, OR) using a variety of data sources. Data is believed to be accurate; however, a degree of error is inherent in all maps. This map is distributed "AS-IS" without warranties of any kind, either expressed or implied, including but not limited to warranties of suitability to a particular purpose or use. This map is intended for use only at the published scale. Reproduction is prohibited.



# Restoration Projects, Priority Stream Reaches and Focal Wildlife Habitat Change

## Deschutes Subbasin Plan

### Project Type

- Fish Passage Improvement
- Instream Flow Restoration
- Instream Habitat Restoration
- Riparian
- Wetland Restoration
- Agricultural/Rangeland Improvement
- Upland Habitat Restoration
- Road Abandonment/Restoration
- Combined
- Monitoring
- Other

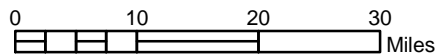
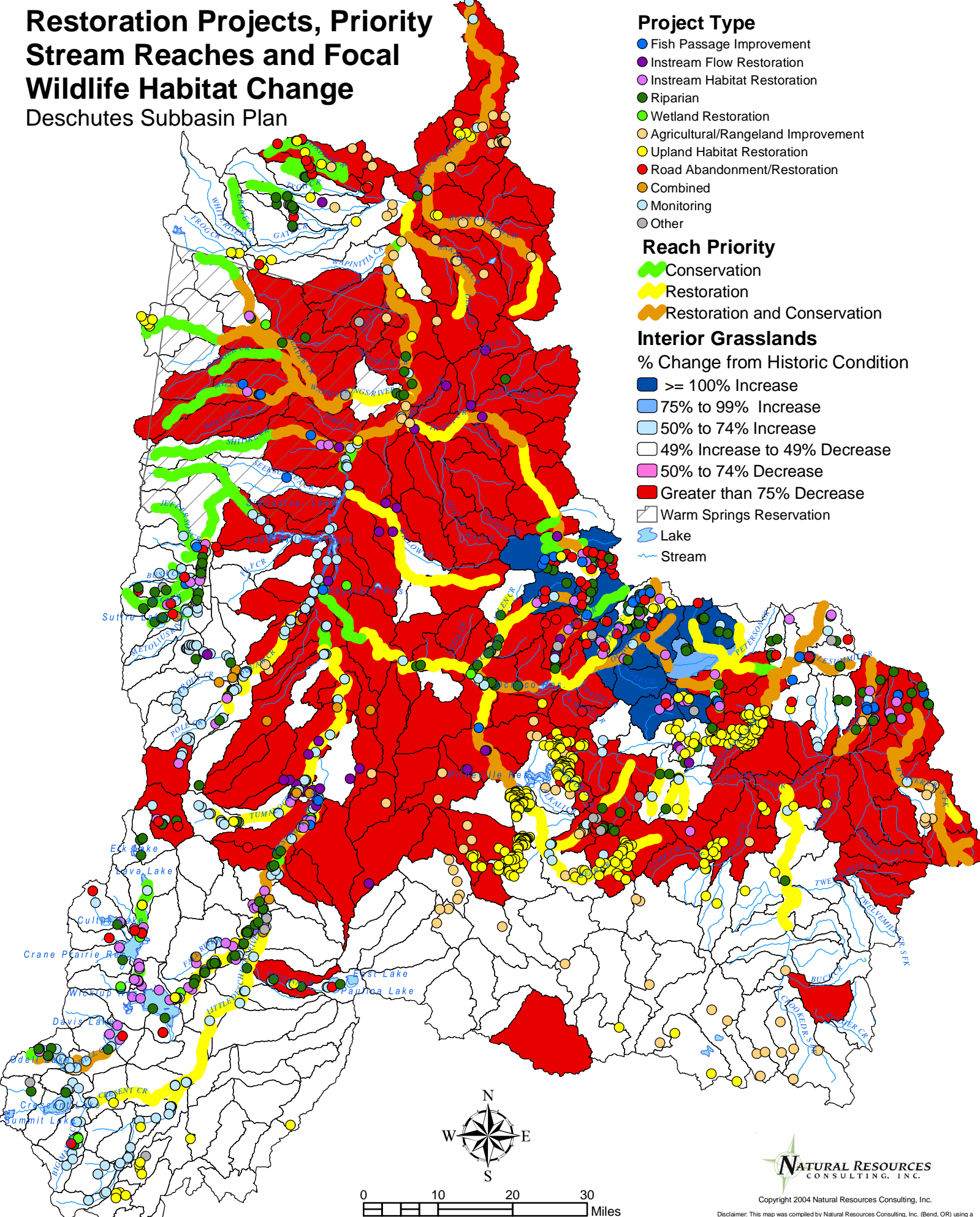
### Reach Priority

- ▬ Conservation
- ▬ Restoration
- ▬ Restoration and Conservation

### Interior Grasslands

% Change from Historic Condition

- ≥ 100% Increase
- 75% to 99% Increase
- 50% to 74% Increase
- 49% Increase to 49% Decrease
- 50% to 74% Decrease
- Greater than 75% Decrease
- ▨ Warm Springs Reservation
- Lake
- Stream



Scale 1:1,000,000



Copyright 2004 Natural Resources Consulting, Inc.

Disclaimer: This map was compiled by Natural Resources Consulting, Inc. (Bend, OR) using a variety of data sources. Data is believed to be accurate; however, a degree of error is inherent in all maps. This map is distributed "AS-IS" without warranties of any kind, either expressed or implied, including but not limited to warranties of suitability to a particular purpose or use. This map is intended for use only at the published scale. Reproduction is prohibited.

Data Source: DRC Existing Activities Inventory and Regional Ecosystem Office (REO) Interagency Restoration Database QHA/EDT Models (Mobrand Biometrics), as Supplied by Local Resource Managers  
 IBIS. 2003. Interactive Biodiversity Information System (<http://ibis.nwhi.org>), Northwest Habitat Institute, Corvallis, OR.

# Restoration Projects, Priority Stream Reaches and Focal Wildlife Habitat Change

## Deschutes Subbasin Plan

### Project Type

- Fish Passage Improvement
- Instream Flow Restoration
- Instream Habitat Restoration
- Riparian
- Wetland Restoration
- Agricultural/Rangeland Improvement
- Upland Habitat Restoration
- Road Abandonment/Restoration
- Combined
- Monitoring
- Other

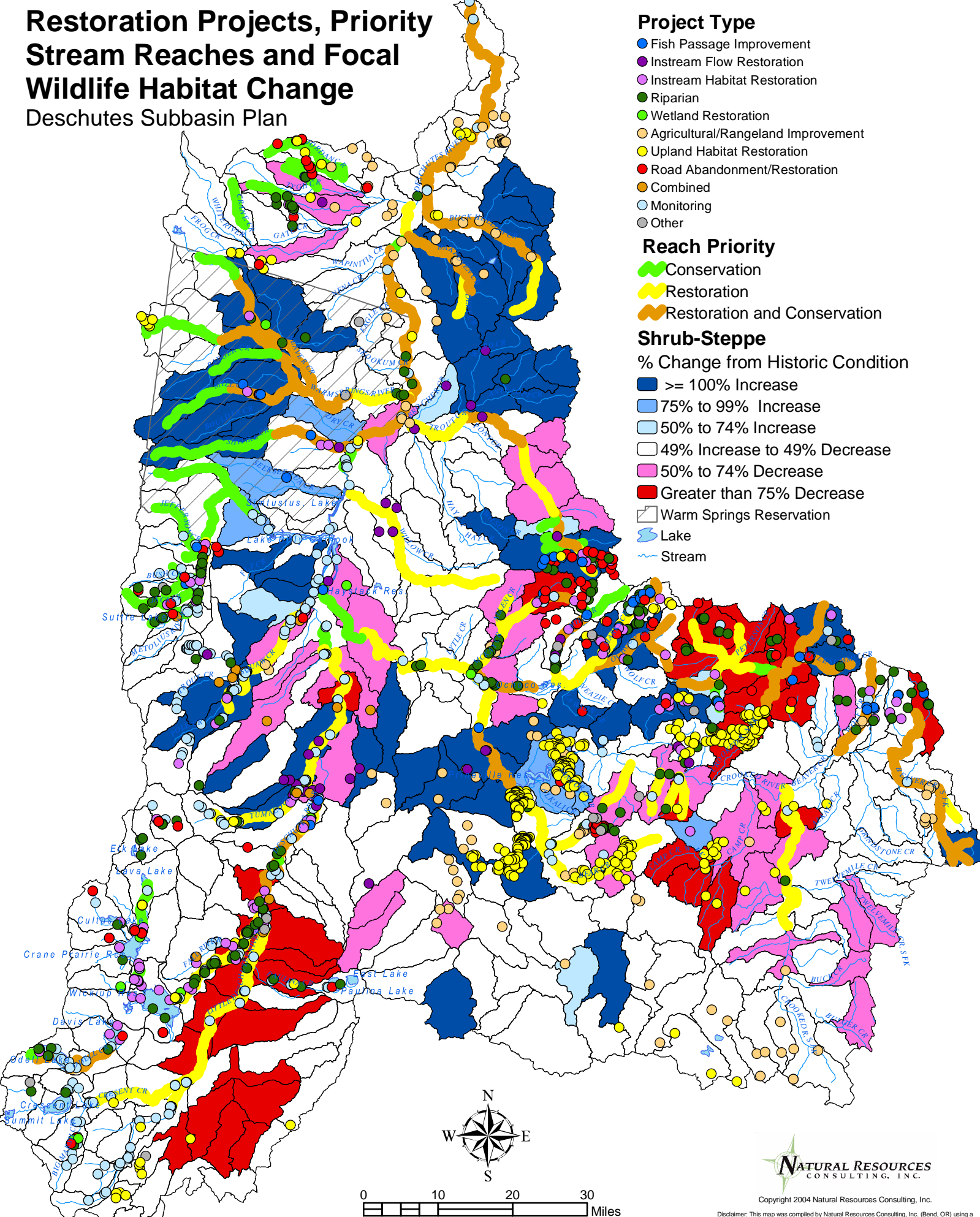
### Reach Priority

- ▬ Conservation
- ▬ Restoration
- ▬ Restoration and Conservation

### Shrub-Steppe

% Change from Historic Condition

- ≥ 100% Increase
- 75% to 99% Increase
- 50% to 74% Increase
- 49% Increase to 49% Decrease
- 50% to 74% Decrease
- Greater than 75% Decrease
- ▨ Warm Springs Reservation
- Lake
- Stream



Copyright 2004 Natural Resources Consulting, Inc.

Disclaimer: This map was compiled by Natural Resources Consulting, Inc. (Bend, OR) using a variety of data sources. Data is believed to be accurate; however, a degree of error is inherent in all maps. This map is distributed "AS-IS" without warranties of any kind, either expressed or implied, including but not limited to warranties of suitability to a particular purpose or use. This map is intended for use only at the published scale. Reproduction is prohibited.

Data Source: DRC Existing Activities Inventory and Regional Ecosystem Office (REO) Interagency Restoration Database QHA/EDT Models (Mobrand Biometrics), as Supplied by Local Resource Managers  
 IBIS. 2003. Interactive Biodiversity Information System (<http://ibis.nwhi.org>), Northwest Habitat Institute, Corvallis, OR.

# Restoration Projects, Priority Stream Reaches and Focal Wildlife Habitat Change

## Deschutes Subbasin Plan

### Project Type

- Fish Passage Improvement
- Instream Flow Restoration
- Instream Habitat Restoration
- Riparian
- Wetland Restoration
- Agricultural/Rangeland Improvement
- Upland Habitat Restoration
- Road Abandonment/Restoration
- Combined
- Monitoring
- Other

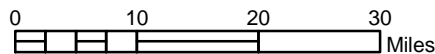
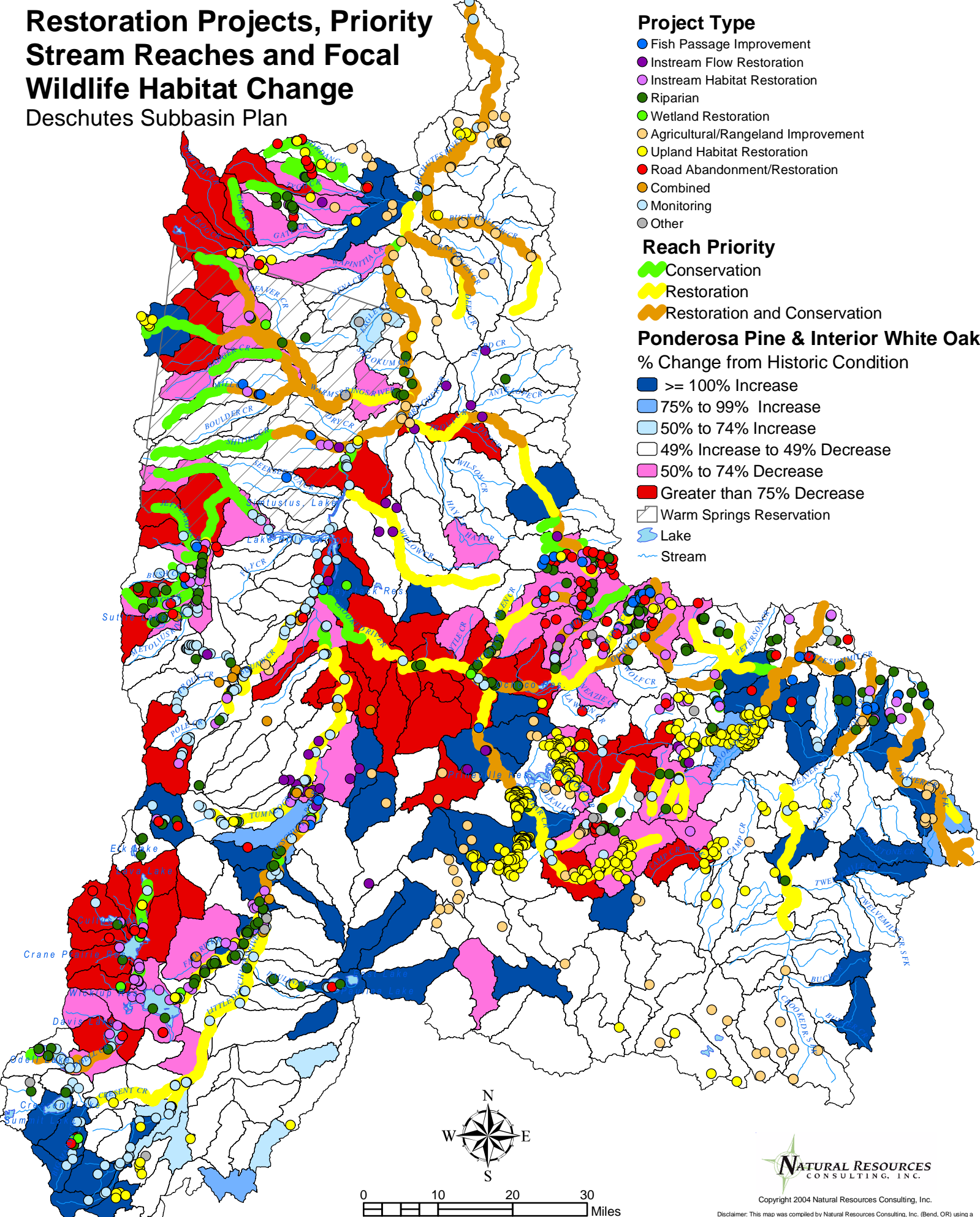
### Reach Priority

- ▬ Conservation
- ▬ Restoration
- ▬ Restoration and Conservation

### Ponderosa Pine & Interior White Oak

% Change from Historic Condition

- ≥ 100% Increase
- 75% to 99% Increase
- 50% to 74% Increase
- 49% Increase to 49% Decrease
- 50% to 74% Decrease
- Greater than 75% Decrease
- ▨ Warm Springs Reservation
- ▭ Lake
- ▬ Stream



Scale 1:1,000,000



Copyright 2004 Natural Resources Consulting, Inc.

Disclaimer: This map was compiled by Natural Resources Consulting, Inc. (Bend, OR) using a variety of data sources. Data is believed to be accurate; however, a degree of error is inherent in all maps. This map is distributed "AS-IS" without warranties of any kind, either expressed or implied, including but not limited to warranties of suitability to a particular purpose or use. This map is intended for use only at the published scale. Reproduction is prohibited.

Data Source: DRC Existing Activities Inventory and Regional Ecosystem Office (REO) Interagency Restoration Database QHA/EDT Models (Mobrand Biometrics), as Supplied by Local Resource Managers  
 IBIS. 2003. Interactive Biodiversity Information System (<http://ibis.nwhi.org>), Northwest Habitat Institute, Corvallis, OR.

# Restoration Projects, Priority Stream Reaches and Focal Wildlife Habitat Change

## Deschutes Subbasin Plan

### Project Type

- Fish Passage Improvement
- Instream Flow Restoration
- Instream Habitat Restoration
- Riparian
- Wetland Restoration
- Agricultural/Rangeland Improvement
- Upland Habitat Restoration
- Road Abandonment/Restoration
- Combined
- Monitoring
- Other

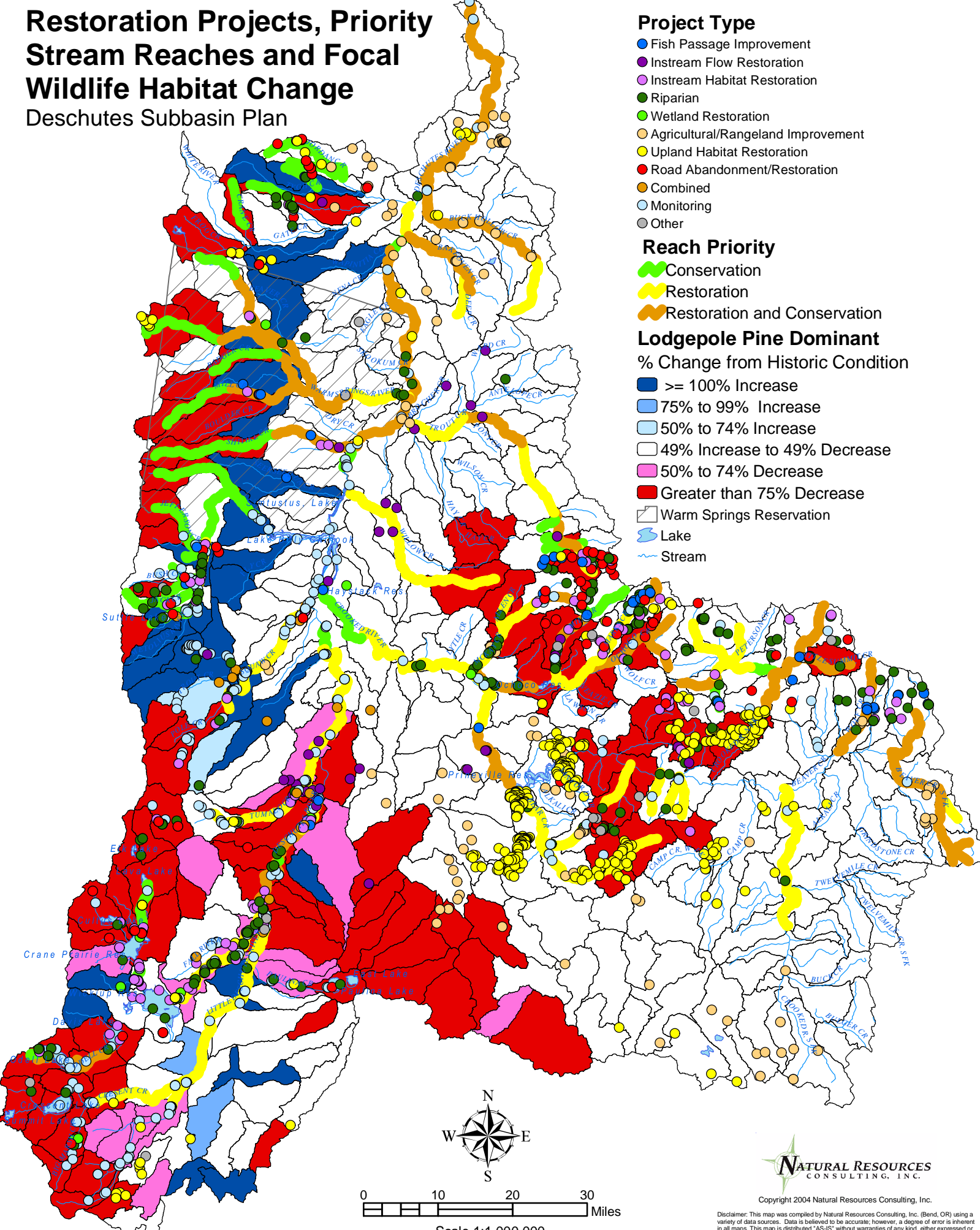
### Reach Priority

- ▬ Conservation
- ▬ Restoration
- ▬ Restoration and Conservation

### Lodgepole Pine Dominant

% Change from Historic Condition

- ≥ 100% Increase
- 75% to 99% Increase
- 50% to 74% Increase
- 49% Increase to 49% Decrease
- 50% to 74% Decrease
- Greater than 75% Decrease
- ▨ Warm Springs Reservation
- Lake
- Stream



Data Source: DRC Existing Activities Inventory and Regional Ecosystem Office (REO) Interagency Restoration Database QHA/EDT Models (Mobrand Biometrics), as Supplied by Local Resource Managers IBIS. 2003. Interactive Biodiversity Information System (<http://ibis.nwhi.org>), Northwest Habitat Institute, Corvallis, OR.

Disclaimer: This map was compiled by Natural Resources Consulting, Inc. (Bend, OR) using a variety of data sources. Data is believed to be accurate; however, a degree of error is inherent in all maps. This map is distributed "AS-IS" without warranties of any kind, either expressed or implied, including but not limited to warranties of suitability to a particular purpose or use. This map is intended for use only at the published scale. Reproduction is prohibited.